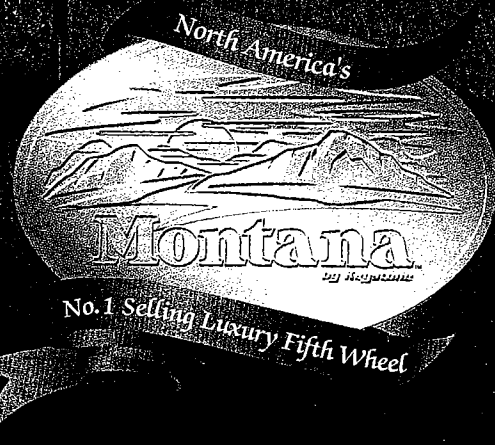


Montana

"Built by People who know RVing"

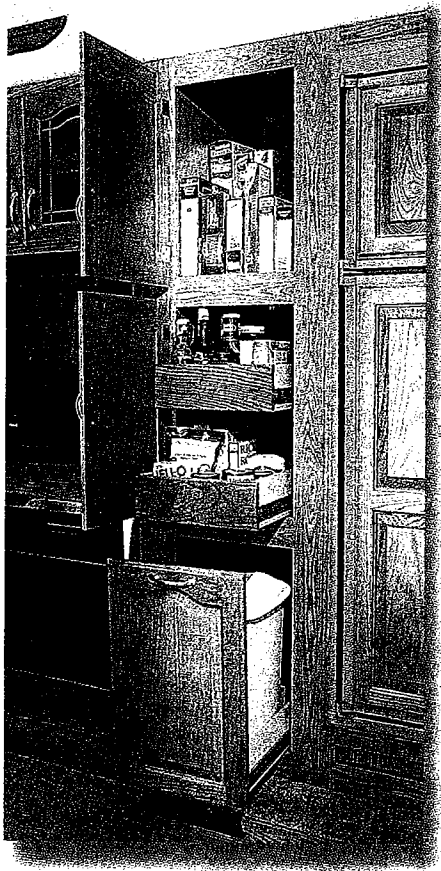
2003



It's Your Turn...

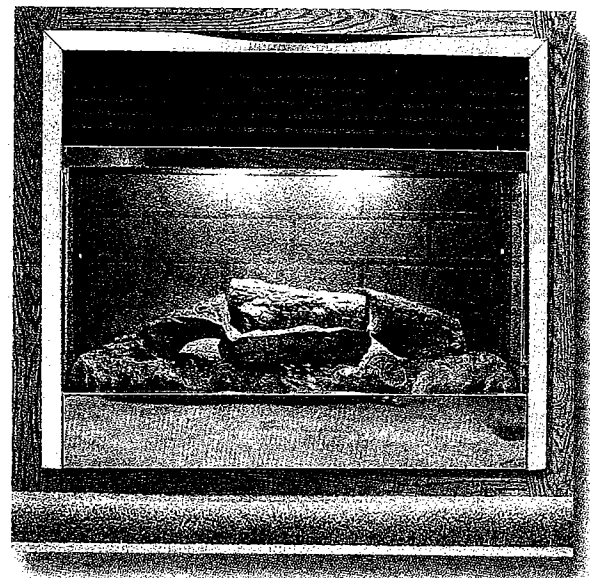
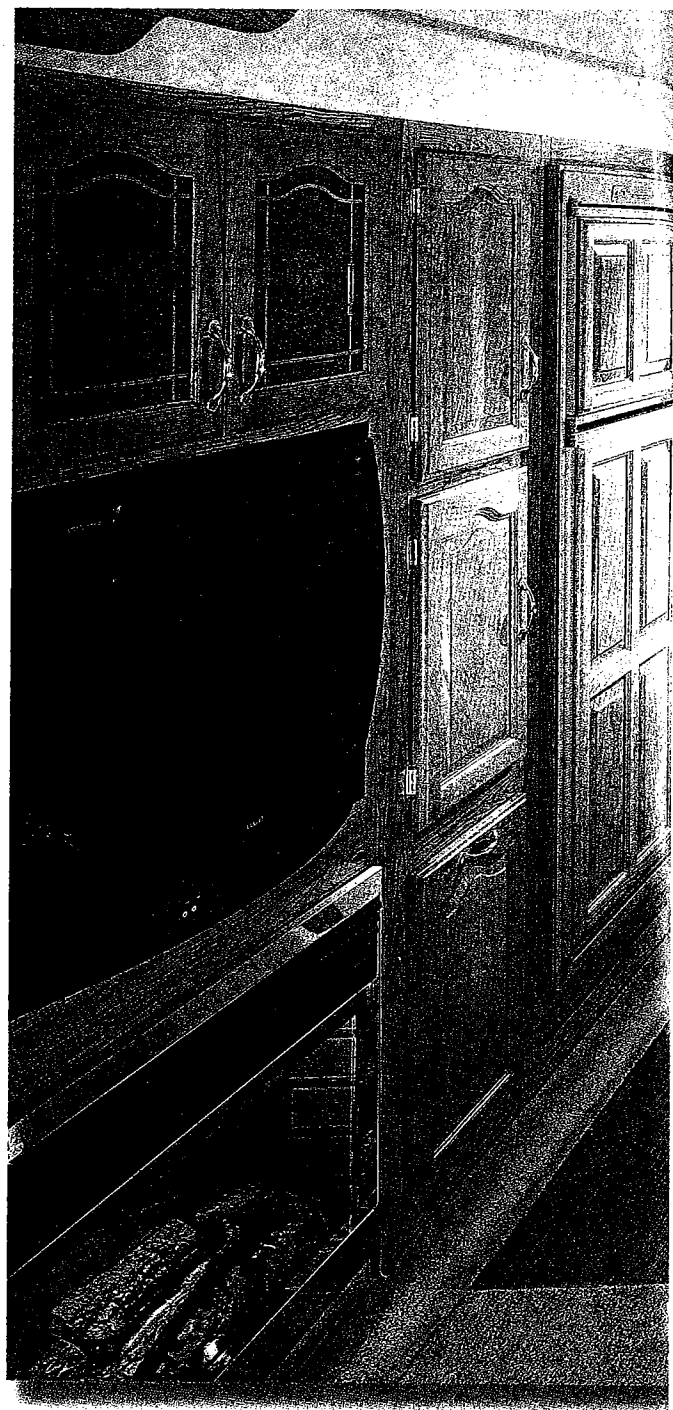
"The fit and finish of our Montana fifth wheel is excellent. The trailer is constructed of good materials and constructed well. Our new Montana weighs 4,000 pounds more, but tows as easily as our 5,200-pound travel trailer did. We are very happy about our purchase, and recommend it to others."

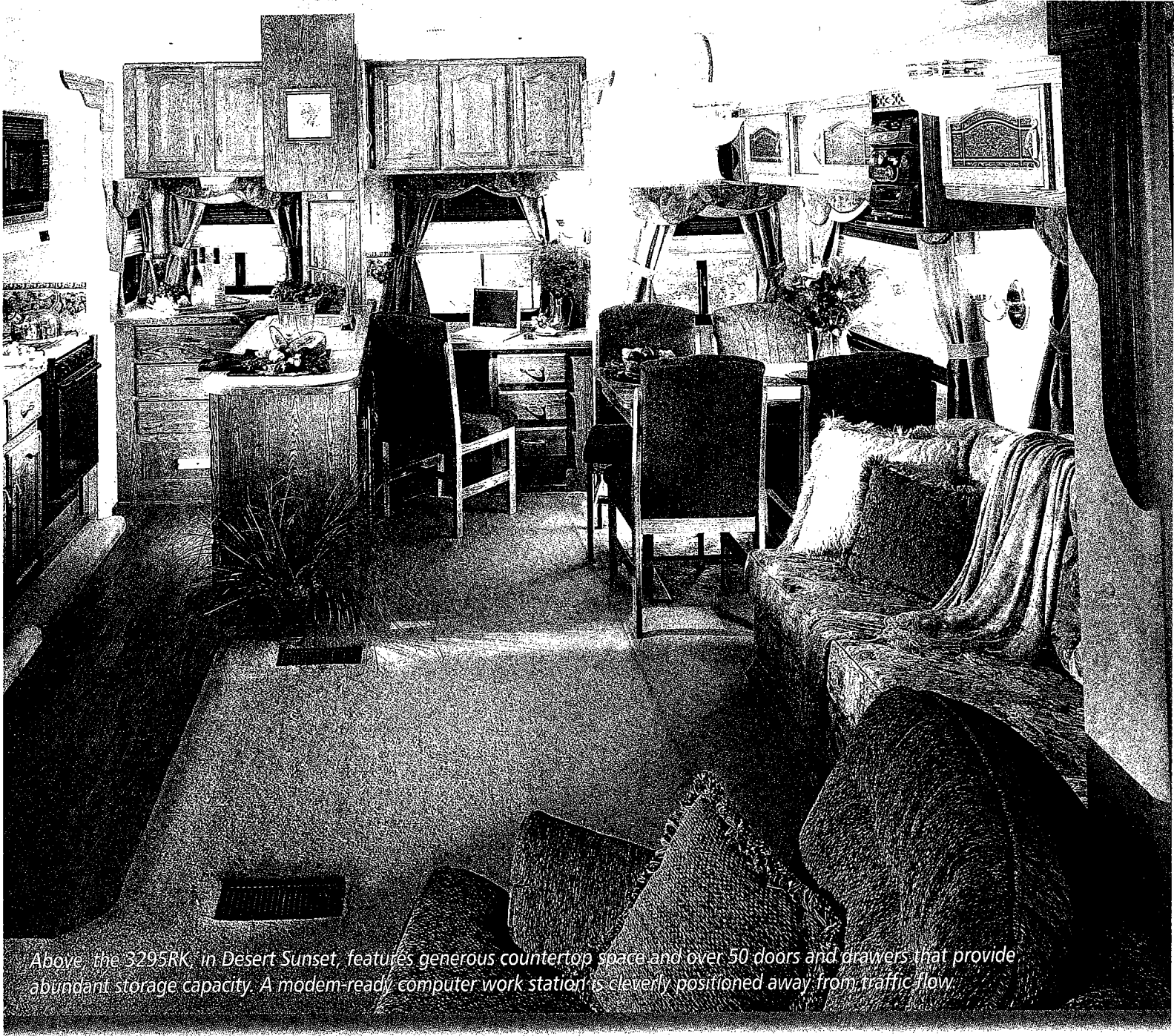
Steve and Evelyn, Texas



The convenient pantry features a high-rise top shelf for large items plus two roomy pull-out drawers and even a sliding waste container compartment.

Perhaps you'll decide to add the warmth and charm of an electric fireplace to your Montana. The 5,100 BTU heater will take the chill off those cooler mornings.



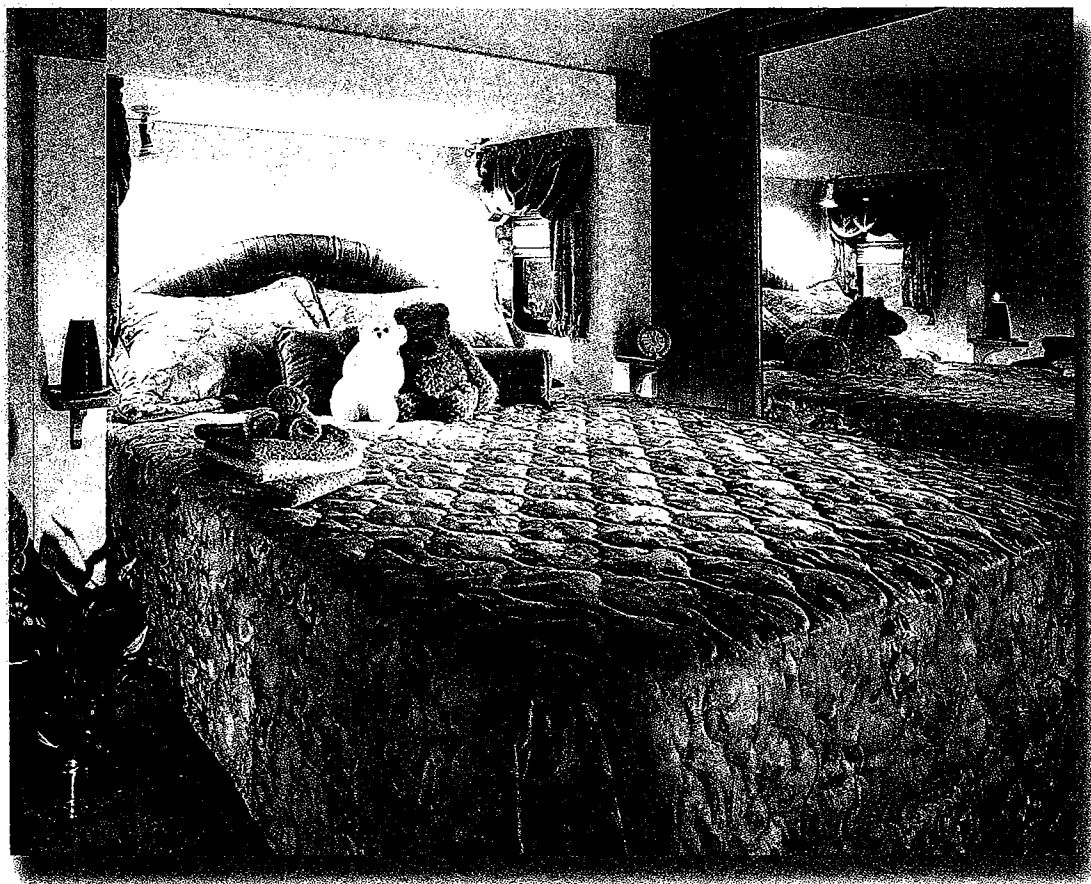


Above, the 3295RK, in Desert Sunset, features generous countertop space and over 50 doors and drawers that provide abundant storage capacity. A modem-ready computer work station is cleverly positioned away from traffic flow.

Move up to Montana.

The history-making Montana has truly redefined today's fifth wheel. Thousands of satisfied RV owners have chosen Montana, realizing that it is simply the finest fifth wheel product in North America. Ask any experienced RVer—you'll hear why Montana is the talk of the campground. With an established reputation for fine craftsmanship, superior towability and interior and exterior style, Montana has set a higher standard for comfort and convenience. For 2003, we've added even more great details in response to what Montana owners have told us they want. Now it's your turn. We invite you to join the legions of RV enthusiasts who have already moved up to Montana.

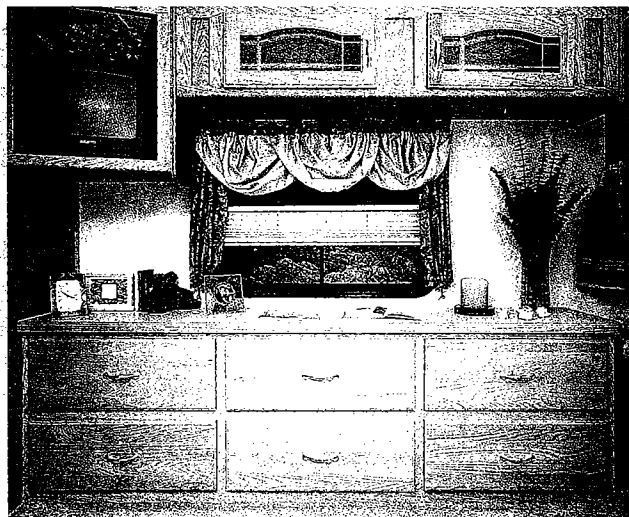
With bedroom slide-room windows on the sidewalls, you can use the rear wall for support as you lean back against your pillows to read or watch TV. Also, you'll have no worries about cold drafts near your head while you're sleeping.

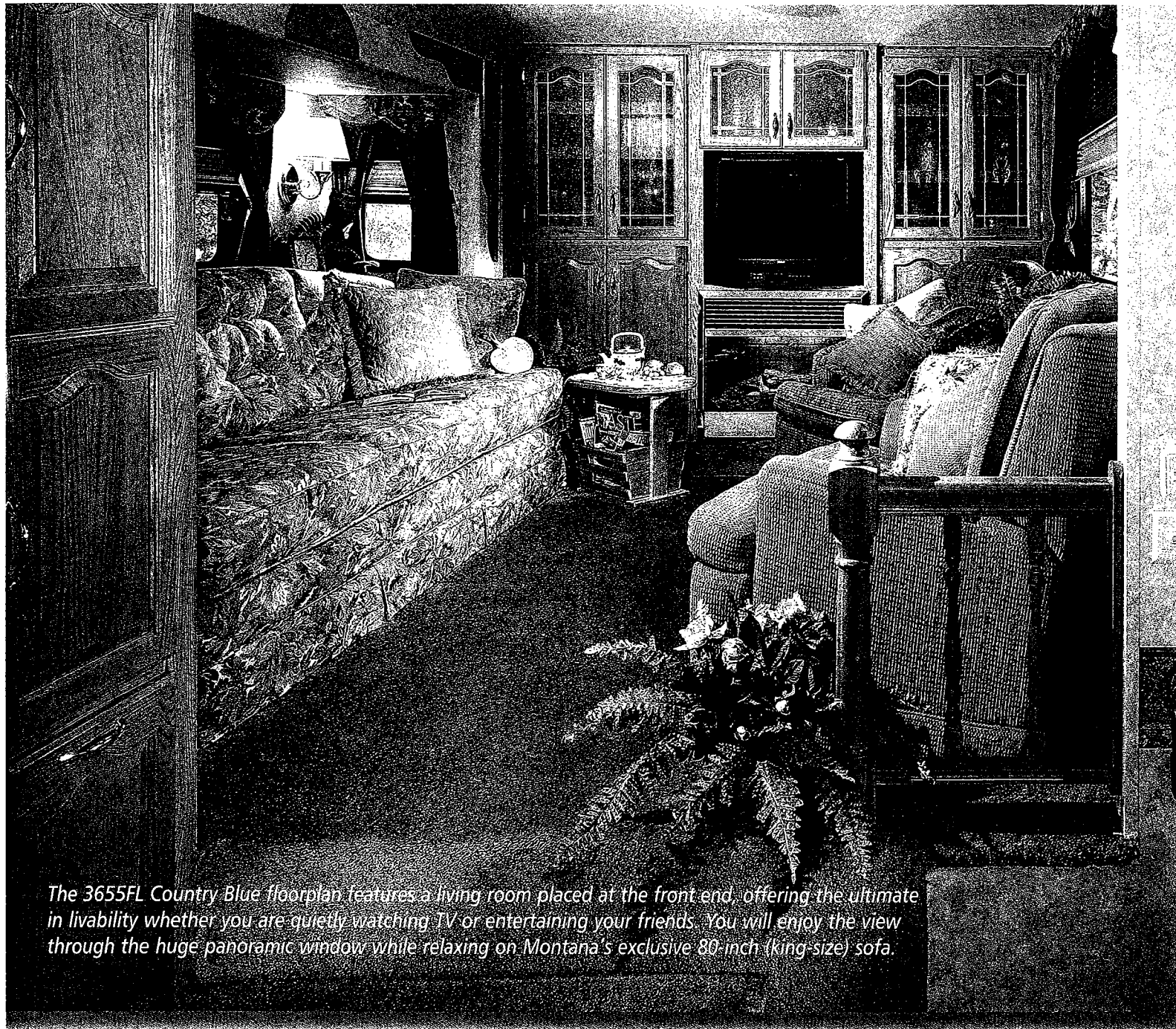


Montana Comfort.

Carefully coordinated room decor in three fashionable color schemes, premium-grade carpeting, upholstery and luxuriously lined draperies with designer valance treatments are all elements which add to Montana's residential feeling. Thoughtful touches like huge, fully vented windows, extra-tall slide-out rooms which include "plate depth" overhead cabinets, entertainment centers and extra-thick queen-size mattresses covered with quilted designer spreads and pillow shams will further ensure your comfort. Our goal is to make every moment you spend in your Montana truly carefree and completely relaxing.

This spacious triple dresser is a customer favorite. An oversized TV cabinet is combined with ample storage space in the overhead area.





The 3655FL Country Blue floorplan features a living room placed at the front end, offering the ultimate in livability whether you are quietly watching TV or entertaining your friends. You will enjoy the view through the huge panoramic window while relaxing on Montana's exclusive 80-inch (king-size) sofa.

Montana Convenience.

Observe the blend of efficiency, ease of care, and attention to detail that you see in every Montana, and you will identify our concept of convenience. With Montana, this means that every feature has been created with you in mind. Nine different floorplans accommodate various life styles. Ample storage is designed for easy access and maximum space utilization. The utilities are engineered for easy maintenance. Nothing has been overlooked. From the toe kicks under the kitchen cabinets to the Lazy Susan, from the directional reading lights over the bed to the computer data port, from the laundry chute to the hidden safe, Montana writes the book on convenience.



Montana Quality.

Montana's absolute "attention to detail" is evident throughout every floorplan we offer — real wood moldings and door trim, steel drawer guides with roller bearings, solid oak cabinet doors and drawers and screwed cabinet fronts, for example. It's easy to see that our skilled craftsmen have provided a level of "fit and finish" second to none. Clearly, Montana has all the quality, comfort and convenience you are looking for. Why delay any longer? It's your turn.

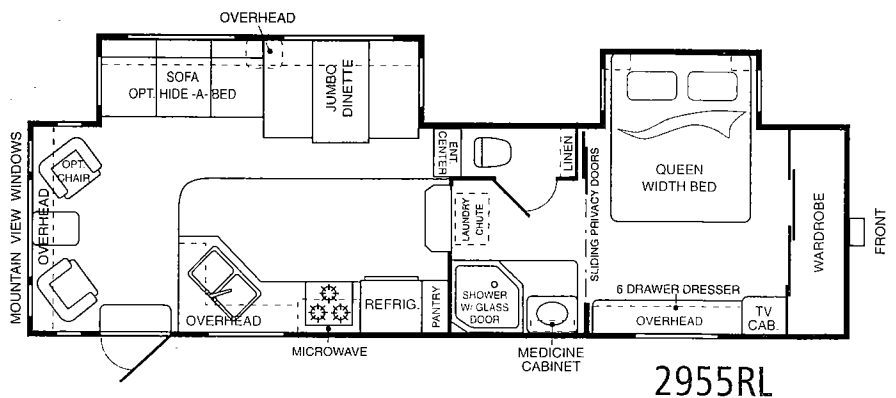
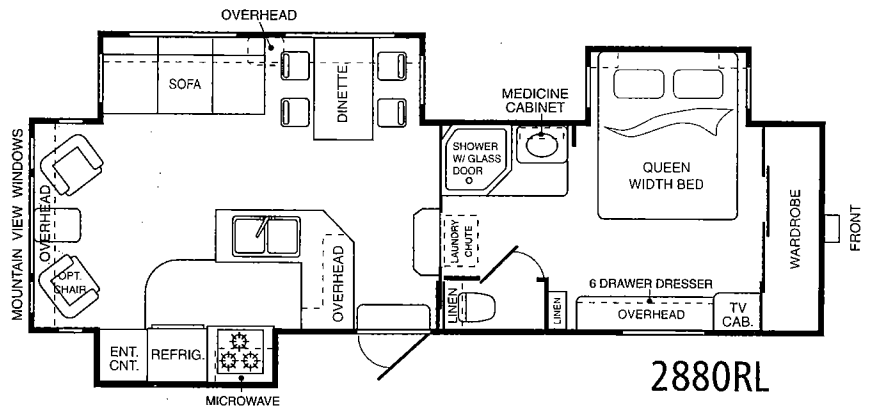
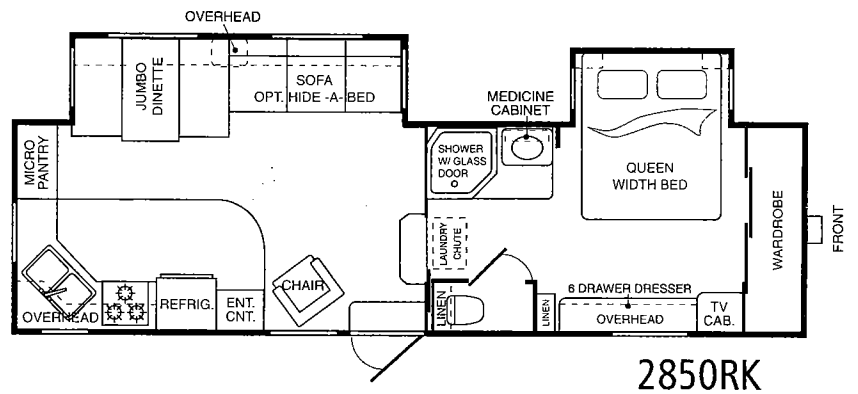


"We took delivery of our second Montana and couldn't be happier. The floorplan is wonderful. Everything worked well and the unit towed beautifully behind our 1-ton Ford Super Duty™ diesel. Thanks for building a terrific product."

Mark and Sheila, Alberta, Canada

Floorplans.

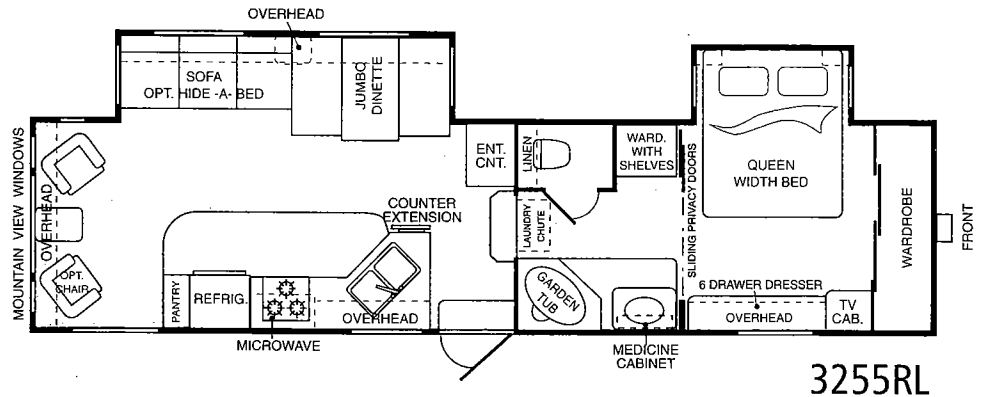
Left, the Montana 3575RL in Spring Floral. Below, a closer look at the 3575RL, showing the versatile modern-ready home office area/ hobby center. Overhead, the 25-inch TV is easily viewed from any seat in the living room.



More Floorplans.

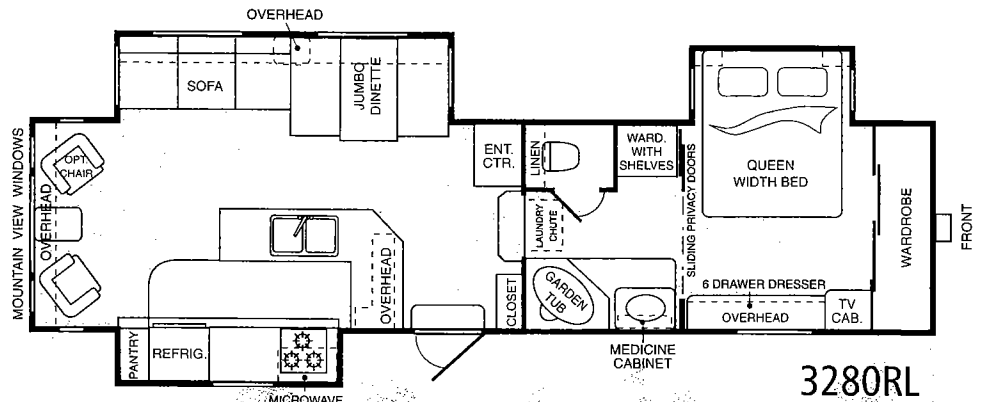
"I like the exceptional craftsmanship on the trailer. We have been camping for over 40 years and I would say this is the best crafted trailer we have ever purchased."

John, New Jersey



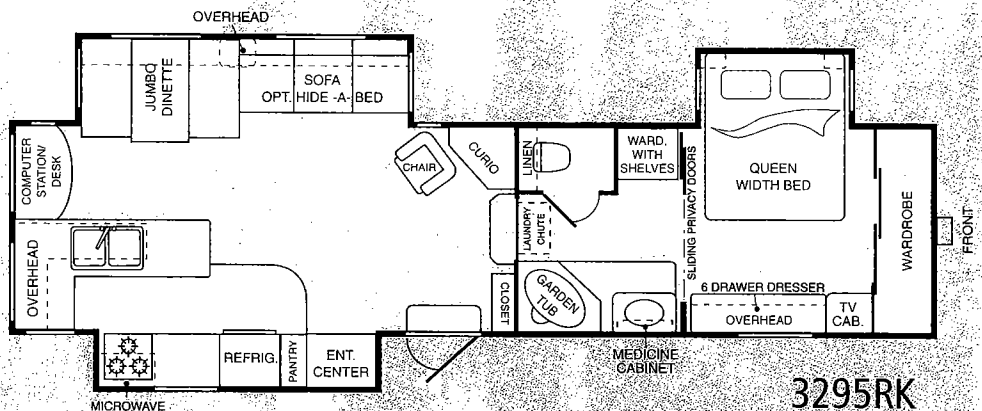
"I love my Montana. It's 2000 pounds heavier than my old one, but it pulls just the same."

Bill, Kansas



"The best camper I have ever had. It tows great and is warm as toast in 18-degree weather. We tell all of our friends that there will never be one that can take its place."

Jim, Nevada

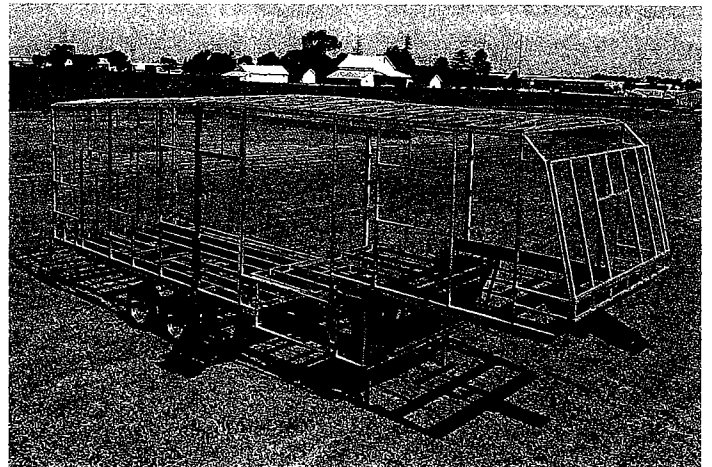


"We love our Montana. We have been camping since 1969 and this is the nicest camper we have owned."

Marilyn, Ohio

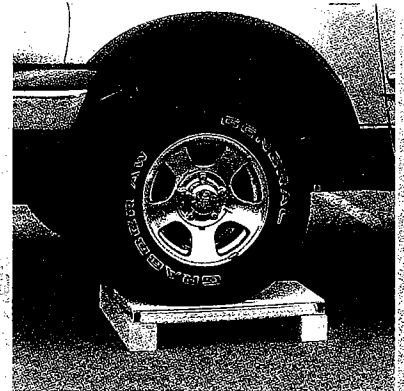
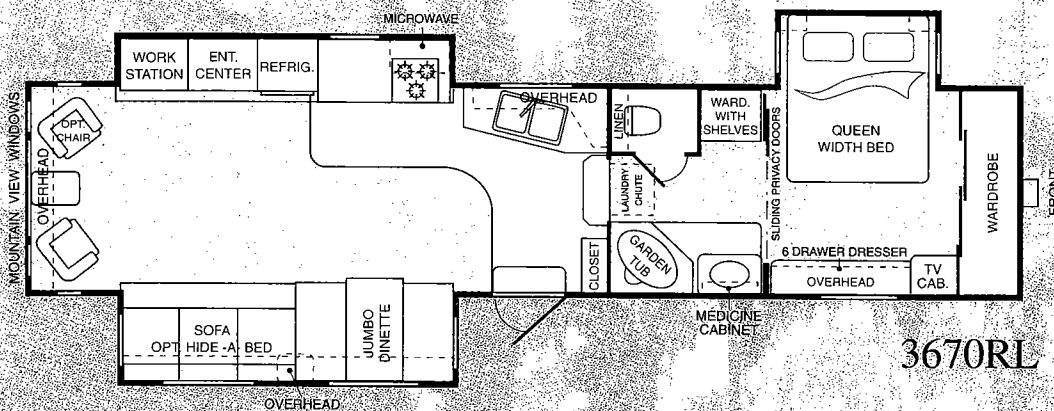
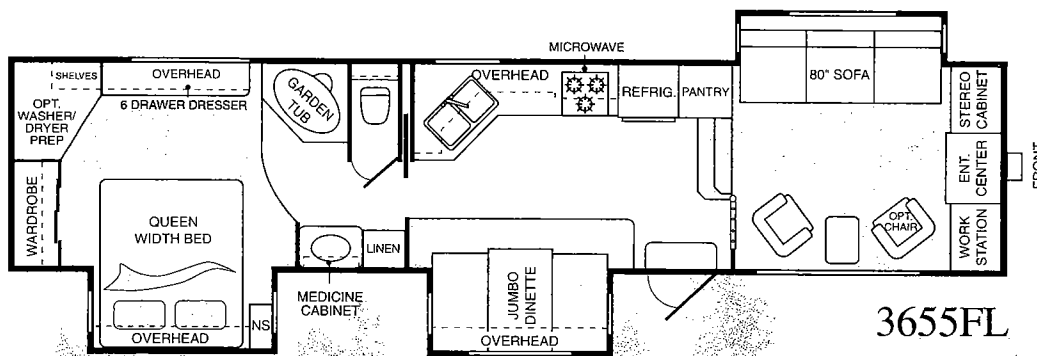
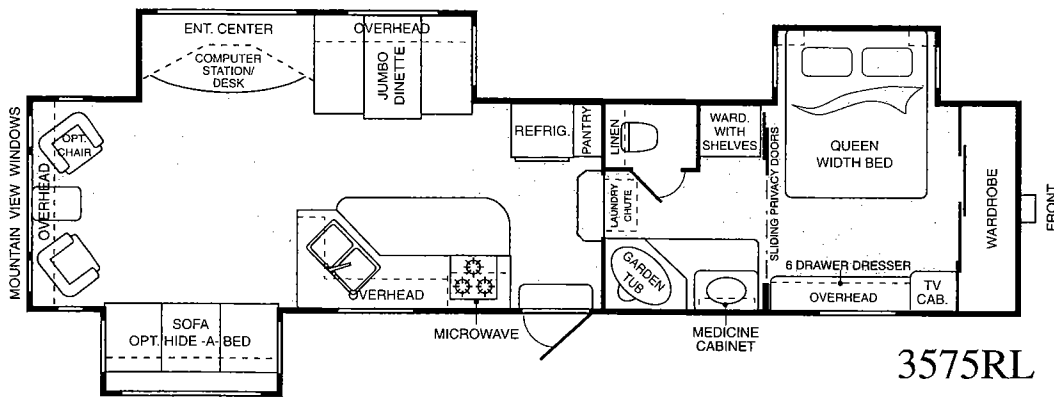
TOTAL
SURROUND™
ALUMINUM STRUCTURE

Many Fifth Wheel brands claim to be aluminum framed, but to cut costs, most manufacturers use wood framed floors and roofs. At Montana, that's not the case. We build 100% aluminum framing all the way around — in the walls, roof and floor. In addition, for added strength and smoother exterior finish, our one-piece sidewalls are 2" thick and laminated! Check out the difference. You'll be impressed.



Light But Strong.

Montana's state-of-the-art laminated and layered sidewall construction creates a lighter yet stronger wall than you'll find in any comparable fifth wheel. Inside this amazingly sturdy wall, solid foam insulation provides year-round comfort with higher insulation factors while also reducing outside noise. And, solid foam will not lose its efficiency through settling in your sidewall (unlike fiberglass insulation).



We don't recommend driving a truck over the wall of your RV, but isn't it nice to know you could?

MODEL NAME	2850RK	2880RL	2955RL	3255RL	3280RL	3295RK	3575RL	3655FL	3670RL
GROSS DRY WEIGHT (UVW) ¹	8760	9390	9000	9690	10150	10360	10540	10220	10560
CARRYING CAPACITY	3060	2730	3380	2930	4030	3940	3500	3880	3600
HITCH	1880	1960	1980	2220	2180	2300	2040	2100	2160
EXTERIOR LENGTH ²	30' 1"	31' 1"	32' 0"	34' 6"	34' 6"	34' 11"	36' 6"	36' 10"	36' 6"
EXTERIOR HEIGHT (TOP OF A/C)	12' 9"	12' 9"	12' 9"	12' 11"	12' 11"	12' 11"	12' 11"	12' 11"	12' 11"

¹ Hi-gloss fiberglass option will add approximately 600 lbs.

² Extended hitch pin adds 9"

GVWR = Gross Dry Weight + Carrying Capacity

Due to continuous product improvement, modifications may be made without prior notification or obligation. Specifications are calculated as base unit with standard equipment only.

Standard Features.

Exterior

• Welded, totally aluminum-framed walls, roof and floor • 2" Laminated, gel coated Filon™ exterior walls (R-9) • Aerodynamic front and rear fiberglass caps • Outstanding exterior pass-thru storage • 1" Insulated radius baggage doors with inside fasteners • Radius wrap lower walls • Heated, enclosed holding tanks • ABS, fully enclosed underbelly • 16" radial tires (32" and larger) • "Easy-to-Lube" axles* • Deluxe patio awning** • Step well for lower first entry step • Tinted windows* • Extended hitch pin • Vented attic* • Seamless, one-piece floor decking • Flip-up wire storage shelf

Interior

Living Area • 28-oz. carpeting and upholstery with fabric protector • Solid oak cabinet doors with cathedral tops • Entertainment center with TV cabinet • Residential-steel drawer glides • 6' 3" tall slide room with overhead cabinets • Swivel rocker • Jackknife sofa • Mini blinds • 12V rechargeable flashlight near exit* • Computer work station with data port • Flush floor slide room in living room

Kitchen • Oak edge counter top • Cabinet toe kicks* • Lighted range hood with fan • Wide, deep drawers — real wood • Residential-size overhead cabinets • Sink-cover cutting board (1) • Linoleum kitchen floor • Oak knife holder in countertop • Lazy Susan* • White acrylic kitchen sink with hi-arch faucet*

Bathroom • 39" garden tub with glass enclosure (3255 and larger) • Neo-angle shower with glass enclosure (2850, 2880, 2955) • Thetford foot pedal toilet* • Adult height vanity • Larger residential-size bath sink • Laundry chute to basement* • Oak edge vanity • Decorative vanity light • Residential-style medicine cabinet • Linen shelf with towel hooks

Bedroom • Deluxe innerspring mattress* • Quilted bedspread and 2 pillow shams • 6-drawer dresser • Overhead TV cabinet and outlet • Directional reading lights over bed* • Night stand shelves

Appliances • Large, 8 cubic foot double door refrigerator • RV microwave oven** • AM/FM stereo cassette with four speakers** • 13,500 BTU Lo-Profile ducted roof air conditioner with wall thermostat** • High output range with automatic ignitor and 22" oven* • Television** • TV antenna and booster*

Utilities • "Easy-Access" double 30-lb. LP bottles with auto change-over* • 35,000 BTU furnace • No-fuss, "Freezeguard" winterizing kit • Water heater by-pass kit* • 6 gallon gas/electric DSI water heater • Systems monitor panel • 55-amp convertor • 30-amp detachable, marine power cord • Automatic ignition furnace with in-floor ducting • Phone jack / data port • Cable TV hook-up • Oak cell phone holder w/charging station* • Fresh water system — 62 gal.; Grey water — 76 gal.; Black water — 38 gal.

* Customer Convenience Group ** "Moving To Montana" Package

Optional Features.

Exterior

• Outside shower • Safety glass windows • Slide-room awning(s) • Aluminum wheels • Dual pane safety glass windows • Hi-gloss fiberglass

Interior

• Recliner/glider chair w/footrest (1 or 2) • Day/night shades • Free-standing dinette w/4 chairs • Neo-angle shower w/glass enclosure in place of garden tub • Decor jackknife sofa • Hide-A-Bed sofa • Plank kitchen floor • Second sink cover • Slide-out oak trim • End table and lamp • Sofa table

Equipment

• 15,000 BTU Lo-Profile A/C w/Quick Cool • Second 13,500 BTU Lo-Profile A/C† • Wire and frame for second A/C† • Satellite prep • Ceiling fan • Fantastic vent fan w/rain sensor • Generator prep† • 10 cubic foot double-door refrigerator • Washer/Dryer prep • 50-amp service • 10-gallon gas/electric water heater • Arctic insulation package • Fireplace

Moving To Montana Package:

• Television • Microwave • AM/FM stereo cassette • 13,500 A/C • Awning • Extended hitch pin • Customer Convenience Group

Value Package:

• Bookshelf, AM/FM, CD cassette/stereo • Range cover • Crank-down stabilizer jacks • Electric front jacks • Roof ladder • Fold-away entry/exit handle • Floor safe • Patio scare light: door and roadside • Spare tire and carrier • Skydome • Raised-oak refrigerator front • Shock absorbers • Black tank flush

† Requires 50-amp service.

"The Montana tows better than my previous fifth wheel which was four feet shorter . . . most of the time I don't even know it's behind me. I was also impressed with the gas mileage I got while towing the Montana."

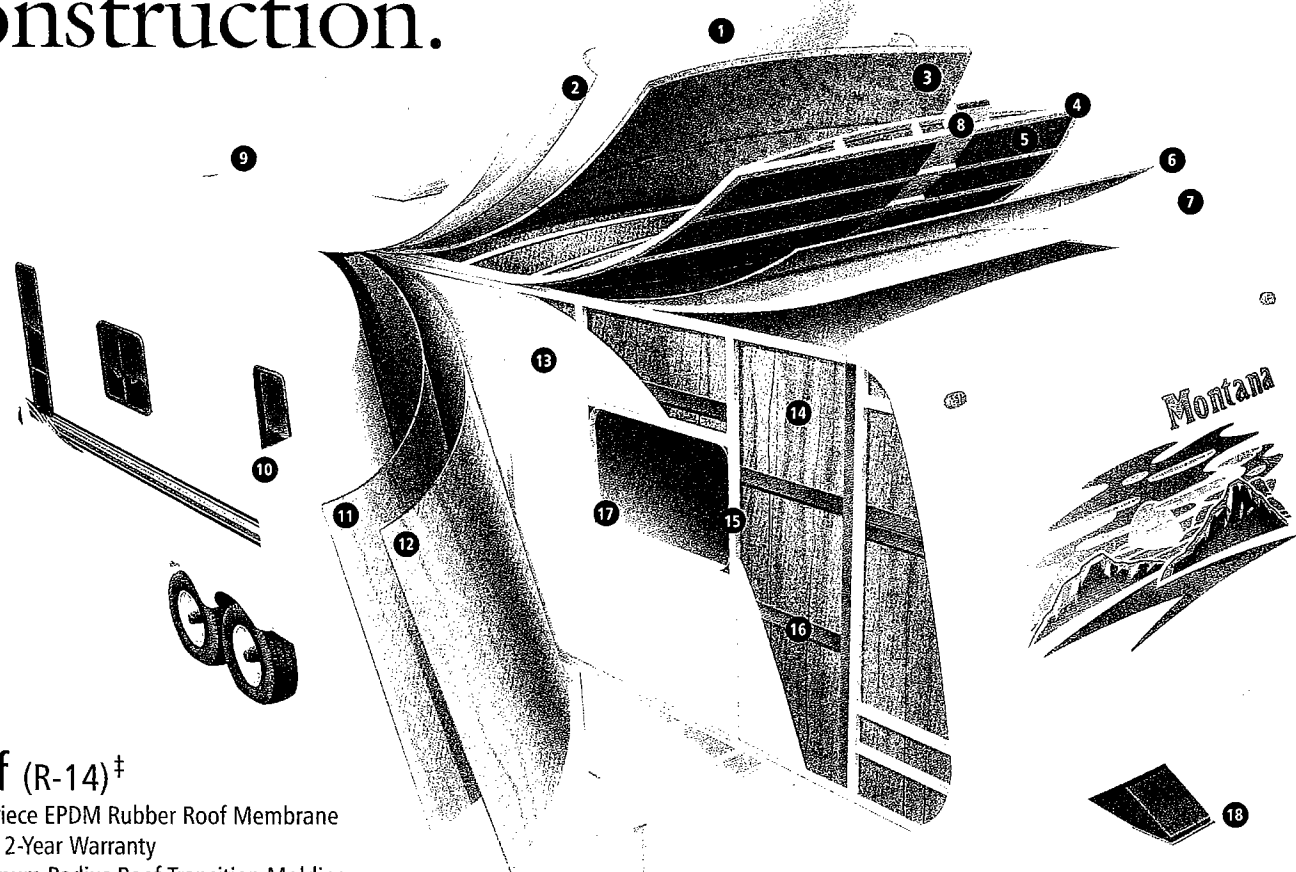
Donald, South Dakota

Towability.

Montana is the finest towing fifth wheel on the market. The reasons are simple and clear — First, lightweight aluminum framing lowers the center of gravity, minimizing sway. You'll also discover that the Montana has been engineered with great weight distribution. (We even separate the LP bottles to spread the load.)

Next, Montana's revolutionary front cap has been engineered to maximize the aerodynamics. Notice in the picture at right how the "end point" of the cap sits lower than the top of the truck cab. This strategic design forces the air to flow over and around the fifth wheel instead of under it. Better aerodynamics result in less sway, stress-free towing and increased fuel economy.

Construction.

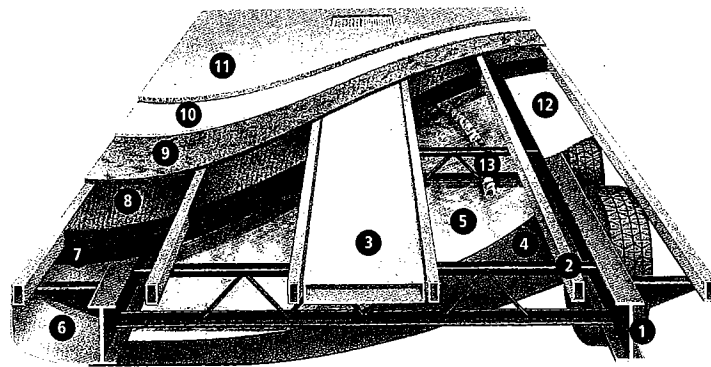


Roof (R-14)[‡]

1. One-Piece EPDM Rubber Roof Membrane with 12-Year Warranty
2. Aluminum Radius Roof Transition Molding
3. 3/8" Structurewood Roof Decking with 25-Year Warranty
4. 5" Welded Aluminum Truss Rafters on 16" Centers
5. Fiberglass Insulation
6. Ceiling Decking
7. Vinyl Ceiling
8. Insulated, Foam-Core Air Conditioning Duct
9. Attic Vent

Sidewalls (R-9)

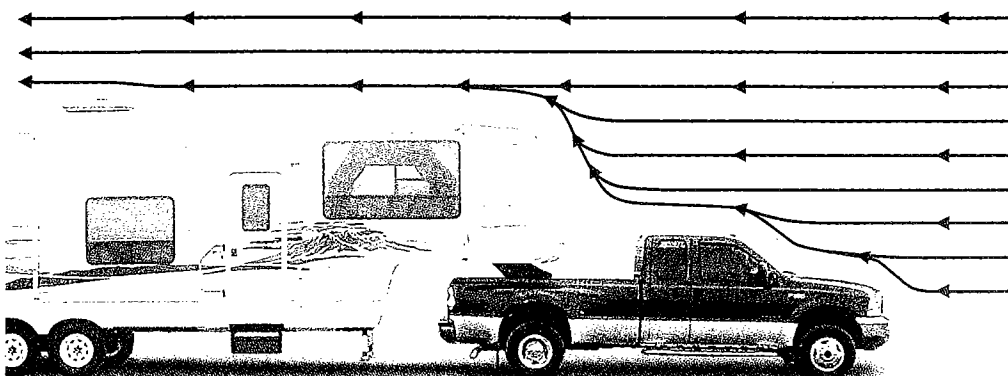
10. Gel-Coated Filon™ Fiberglass
11. 1/8" Luan Board
12. Second Layer 1/8" Luan Board with Seams Staggered
13. Solid Block Insulating Foam
14. Interior Decorator Board
15. 2" Welded Aluminum Wall Studs
16. Electro-Galvanized Sheet (EGS) Metal Backing Strips
17. Radius Corner Blocks
18. Extended Hitchpin, 34' and Shorter



Floor (R-21)[‡]

1. 10" Steel "Rolled" I-Beam
2. 3" Welded Aluminum Floor Joists on 16" Centers
3. 3" Large-Capacity Heat Duct
4. 1/4" ABS Underbelly
5. Astro-Foil Insulation (97% Heat Reflection)[‡]
6. Full Radius Wrap Aluminum Enclosure
7. Moisture Barrier
8. Fiberglass Insulation
9. 5/8" Seamless, Structurewood Floor Decking with 25-Year Warranty
10. Carpet Pad
11. 28-Ounce Residential-Grade Carpeting with Stain Protectant
12. Aluminum Wheel Well
13. 2" Heat Duct from Furnace into Underbelly

Aerodynamics



[‡] When Equipped with "Arctic Insulation Package"

The Montana Story

At Montana, we have a passion for creating the best fifth wheels in the world. Five years ago, we developed a unique strategy to make this happen.

By truly listening to owner feedback and then responding quickly, we can build what our customers want to own, not what some committee thinks they might like.

Because we don't have "cloned" or "sister" products, Montana's engineers, designers and builders can be totally focused on every detail to ensure your lasting enjoyment. We have made Montana unlike any other fifth wheel available today.

Our strategy is working, and as a result of these efforts, thousands of satisfied owners, by positive word-of-mouth advertising, have elevated Montana to the Number One-selling fifth wheel brand in North America.

Whether you are considering another Montana or your first Montana, we hope our commitment to excellence will give you the RV experience you've always dreamed about.

J. Paul
General Manager

Montana Interior Details.



Your Montana computer center is built in, complete with a data port.



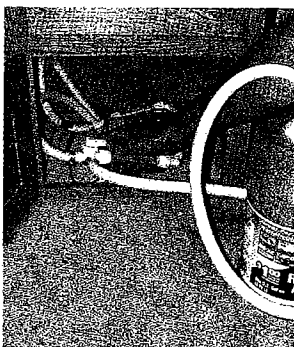
Montana's convenient Lazy Susan places food items at your fingertips.



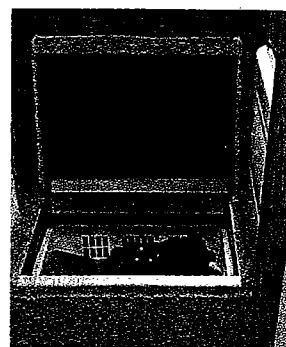
All-wood residential moldings — you won't find plastic trim in a Montana.



The hidden floor safe protects your valuables while you are away.



The no-fuss Freezeguard™ kit makes winterizing an easy, clean process.



The easy-to-access laundry chute transfers dirty laundry into the outside storage area, away from your living space.

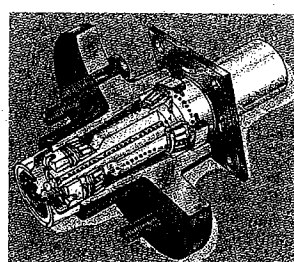
Montana Exterior Details.



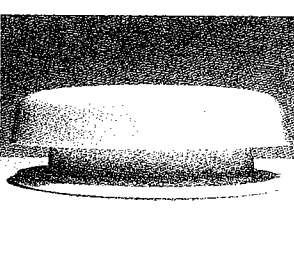
The detachable marine power cord is safe, easy to use and completely sealed.



You'll provide easy, safe entry for everyone with our low first step and folding handrail.



Ultralube™ AL-KO Axles make it simple to maintain your Montana bearing assembly without removing the wheel.



Attic vents provide vital escape routes for unwanted moisture that can accumulate with extended use.



Enclosed, protected sewer dump valves are one of many carefully engineered details in the hidden areas of your Montana.

Your Montana Dealer:

Montana Fifth Wheel is a product of:



Keystone RV Company

17400 Hackberry Drive Goshen, IN 46526
(574) 535-2100 www.keystone-montana.com



Product information and photography are as accurate as possible at the time of publication. Colors and finishes are photographic representations and may appear differently when viewing actual materials. Some features shown are optional. Features, prices, and specifications are subject to change without notice. 12/02