

# Cougar *by Keystone* Lite

TRAVEL TRAILERS  
AND FIFTH WHEELS



**DSI**  
Annual RVDA DEALER  
SATISFACTION INDEX  
AWARD WINNER  
9 YEARS IN A ROW



**Keystone RV  
Company**



At the heart of Cougars philosophy is the belief that if we listen to our customers, and execute accordingly, the crucial combination of quality, design, weight, luxury and price, is to offer an unparalleled product. A product that will provide the finest means for families, both young and old, to create memories year after year! From growing families, to full timers, Cougar vows to provide the top travel trailer and fifth wheel floor plans and features to suit each dynamic, and maximize their unique camping experience. Growing with Cougar from a mid-level travel trailer, to a 38 foot fifth wheel, is our forte! By avoiding fads and trends, we have been able to focus more on innovation, quality, style and affordability. These attributes are what our customers rely on, and appreciate, and are the hallmarks of America's #1 selling brand. Cougar is the choice of yesterday, today and tomorrow!

Cougar remains focused on the growing popularity of lightweight luxury vehicles, and the ease of tow ability. We have ongoing commitment to create a stress free journey for all who choose to explore with us. We make it our goal that our current customers choose us for each of their subsequent voyages. *Come grow with us and explore the country in a Cougar RV! Where you are always a step ahead, and luxury and lightweight meet!*



**Since 1998,**  
*Cougar has been the pinnacle of excellence in the RV industry,  
earning the DSI award for 9 consecutive years. Come find out why...*

THE DSI (DEALER SATISFACTION INDEX) AWARD RATES THE LEVEL OF SATISFACTION THE DEALERS HAVE IN A MANUFACTURER. IT RATES MANUFACTURERS IN MANY AREAS SUCH AS: PRODUCT DESIGN, PRODUCT RELIABILITY & QUALITY, WARRANTY SUPPORT, AND PARTS SUPPORT.





## ***COUGAR X-LITE TRAVEL TRAILERS***

Continuing to grow in floorplans and features, X-Lite travel trailers are engineered to give you more for your money while focusing on staying lightweight and budget friendly.



***PAGES 4-11***



## ***COUGAR X-LITE FIFTH WHEELS***

Taking the quality of a Cougar and matching it with the size and weight your vehicle can tow! X-Lite Cougar offers multiple 1/2 ton towable fifth wheel floorplans.



***PAGES 12-19***



LED Lighted awning



From our standard recliners to our optional theater seats, Cougar offers reclining furniture to fit your needs (some models).



Cougars Tri-Fold Sofa offers top of the line styling while providing an exceptional sleeping surface (OPTIONAL).



# TRAVEL TRAILER FEATURES



## POLAR PACKAGE

The Cougar X-Lite Polar Package expands your camping season with an enclosed and forced air, heated underbelly.

Not only will you have improved aerodynamics, but your valves, tanks and water lines are all protected.



## COUGAR HAS EARNED THE DSI AWARD AN UNPRECEDENTED 9 YEARS IN A ROW!

THE DSI (DEALER SATISFACTION INDEX) AWARD RATES THE LEVEL OF SATISFACTION THE DEALERS HAVE IN A MANUFACTURER. IT RATES MANUFACTURERS IN MANY AREAS SUCH AS: PRODUCT DESIGN, PRODUCT RELIABILITY & QUALITY, WARRANTY SUPPORT, AND PARTS SUPPORT.





King Beds are standard on all Cougar X-Lite travel trailers.



The X-Lite docking station provides a convenient location for many of your set-up needs.



Solid surface countertops in the kitchen



X-Lite vaulted ceiling add more head room without effecting overall unit height (TT only).



BATTERY DISCONNECT



LED lighting throughout



OPTIONAL FIREPLACE  
(30RLI, 33MLS, 33RES, 33SAB)



Hardwood cabinet doors



Cougar X-Lite comes outfitted with a black tank flush hook-up. This feature keeps the black tank clean and trouble free.



Heated ductwork in the enclosed underbelly helps keep important things from freezing when you need them the most.

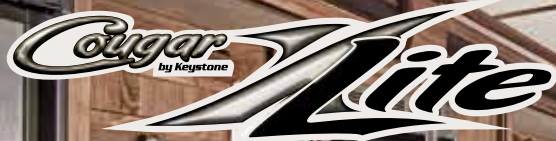


BLUETOOTH STEREO. Also includes:  
AM/FM, MP3, AUX INPUT, USB PORT,  
DVD/CD PLAYER



No need to worry about mobile devices dying. All Cougar fifth wheels come equipped with a USB CHARGING CENTER



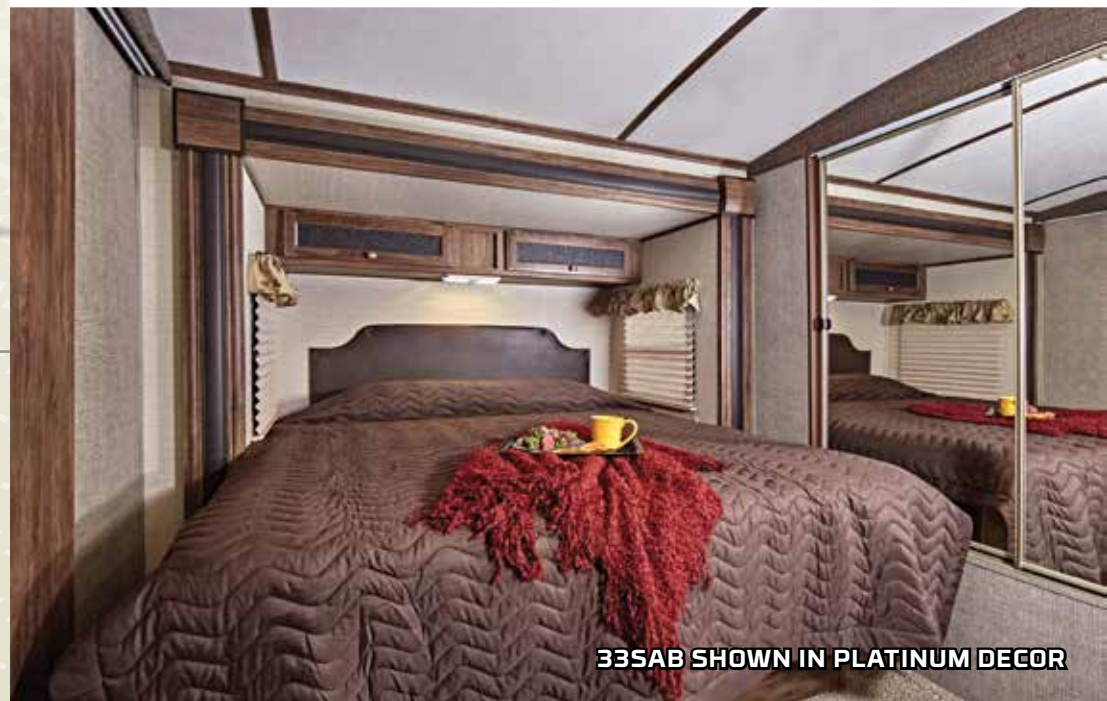


33SAB SHOWN IN PLATINUM DECOR



## TRAVEL TRAILERS

Continuing to grow in floorplans and features, X-Lite travel trailers are engineered to give you more for your money while focusing on staying lightweight and budget friendly.



33SAB SHOWN IN PLATINUM DECOR





**OPTIONAL FREE-STANDING DINETTE**



**8 CU. FT.  
FRIDGE  
ON ALL  
MODELS**

**PLENTY OF REFRIGERATOR STORAGE**



**STAINLESS STEEL SINK**



**33SAB SHOWN IN PLATINUM DECOR**



**26RBI ENTERTAINMENT CENTER**





## X-LITE DURABLE CONSTRUCTION

- |   |  |
|---|--|
| 1 Gel Coated Filon Exterior                       | 13 Moisture Barrier Wrap                   |
| 2 Luan Layer                                      | 14 Step Light on Frame                     |
| 3 Hi-Density Block Foam Insulation (Sidewall R-7) | 15 Underbelly Heat Duct                    |
| 4 Interior Wallboard                              | 16 PACO I-Beam Frame                       |
| 5 5 Side Welded Aluminum Super Structure          | 17 One Piece T.P.O. Roof                   |
| 6 BeauFlor® Flooring                              | 18 3/8" Walkable Roof Decking              |
| 7 Insulated A/C Duct                              | 19 R-14 Fiberglass Batten Insulation       |
| 8 1st Layer Floor Decking                         | 20 5" Crowned / Stamped Steel Roof Trusses |
| 9 2nd Layer Floor Decking with Staggered Seams    | 21 Sloped Slide Roof                       |
| 10 Hi-Density Block Foam Insulation (Floor R-9)   | 22 Wiper Seals                             |
| 11 Aluminum Floor Studs                           | 23 Bulb Seal in T-Track                    |
| 12 3rd Layer Floor Decking                        | 24 Aerodynamic Painted Front Cap           |
|   | 25 EZ Lube Axles                           |
|   | 26 Radius Entry Steps                      |



## FLOOR (R-9)

- |  |  |
|--|--|
| 1 Aluminum Studded Laminated Floor                       | 7 Welded Steel Cross Members             |
| 2 3" Large Capacity Insulated Heat within Floor          | 8 Woven Moisture and Vapor Barrier       |
| 3 Heated and Enclosed Underbelly                         | 9 Hi-Density Block Foam Insulation (R-9) |
| 4 1/4 Polypropylene Underbelly Guard                     | 10 Beauflor Flooring                     |
| 5 2" Heat Duct Into Underbelly                           |  |
| 6 Heated and Enclosed Water Lines, Dump Valves and Tanks |  |



# COUGAR X-LITE FEATURES

**WALKABLE  
ROOF**

**LED  
AWNING**

**KEYSTONE'S  
MULTI-COAT PAINT  
TECHNOLOGY**

Keystone's Multi-Coat Paint Technology consists of three layers of base coat followed by two layers of automotive clear coat.

**CORRECT TRACK  
ALIGNMENT SYSTEM**

- With Correct Track, the trailer tows with the tow vehicle, not against it
- Tires run smoother and cooler
- Improves fuel economy
- Helps preserve the life of the RVs equipment, appliances, etc
- Dramatically improves tire life

**LED DOCKING  
LIGHTS**

# X-LITE TRAVEL TRAILER FLOORPLANS



MODEL	SHIPPING WEIGHT	CARRYING CAPACITY	HITCH	LENGTH*	EXTERIOR WIDTH	HEIGHT	FRESH WATER	WASTE WATER	GRAY WATER	LPG	AWNING
21RBS	5410	1790	550	25' 9"	8'	11' 4"	43	30	30	40	16'
25RDB	5755	2045	755	29' 6"	8'	11' 4"	43	30	60	40	16'
26RBI	6100	1700	710	30' 2"	8'	11' 4"	43	30	60	40	19'
28RLS	6150	1650	760	31'	8'	11' 4"	43	30	60	40	20'
28RBS	6115	2085	895	32' 2"	8'	11' 4"	43	30	60	40	19'
30RLI	7704	1796	1055	36'	8'	11' 4"	43	30	60	40	12'
31SQB	7115	1885	920	35' 11"	8'	11' 4"	43	30	60	40	19'
32FBS	7400	2100	965	35' 10"	8'	11' 4"	43	30	60	40	17'
33MLS	7675	1875	750	36' 2"	8'	11' 4"	43	30	60	40	12'
33RBI	7560	1940	1025	36'	8'	11' 4"	43	30	60	40	19'
33RES	7717	2043	960	36'	8'	11' 4"	43	30	60	40	14'
33SAB	8390	1455	1045	36' 10"	8'	11' 4"	43	30	60	40	12'
34TSB	8075	1425	940	37' 5"	8'	11' 4"	43	30	60	40	8'

DISCLAIMER: Product information is as accurate as possible as of the date of publication of this brochure. Features, floor plans, and specifications are subject to change without notice. Please also consult Keystone's web site at [keystonerv.com](http://keystonerv.com) for more current product information and specifications. Tow Vehicle Disclaimer. CAUTION: Owners of Keystone recreational vehicles are solely responsible for the selection and proper use of tow vehicles. All customers should consult with a motor vehicle manufacturer or their dealer concerning the purchase and use of suitable tow vehicles for Keystone products. Keystone disclaims any liability or damages suffered as a result of the selection, operation, use or misuse of a tow vehicle. KEYSTONE'S LIMITED WARRANTY DOES NOT COVER DAMAGE TO THE RECREATIONAL VEHICLE OR THE TOW VEHICLE AS A RESULT OF THE SELECTION, OPERATION, USE OR MISUSE OF THE TOW VEHICLE. \*Length is defined as the distance from the centerline to the hitch pin/coupler to rear bumper of the trailer.



# X-LITE TRAVEL TRAILER STANDARDS, OPTIONS AND DECORS

## CAMPING-IN-STYLE PACKAGE\*

- Pleated shades throughout
- Black trim safety glass windows
- Stainless steel microwave oven with turn style
- Aluminum framed sidewalls, floors, front, rear and slide rooms
- 5" Fabricated stamped steel roof trusses
- 13,500 BTU air conditioner
- Raised panel cabinet doors
- XL Folding grab handle
- 3/8" Walkable roof decking

## VALUE PACKAGE\*

- True home CD/DVD system with speakers and separate zones (12-Volt compatible); MP3 player hookup on stereo with Bluetooth
- All weather outside speakers
- Gas/electric water heater with quick recovery
- Residential shower/tub surround
- TV antenna
- Laminated fiberglass sidewalls
- 32" LCD TV (40" LCD in 30RLI, 33RES, 33SAB, 33MLS)

## CONVENIENCE PACKAGE\*

- Painted front cap with LED docking lights
- Bowed roof rafters (vaulted ceiling- TT only)
- Outside shower
- Stainless steel refrigerator
- Spare tire
- Oversized exterior baggage doors
- Step light
- Battery disconnect
- LP quick connect

## X-LITE PACKAGE\*

- Black tank flush
- LED electric awning
- Radial tires
- Carbon monoxide detector

## MANDATORY OPTIONS\*

- Polar package
- Aluminum wheels

## X-LITE OPTIONS

- Theater seating (30RLI, 33RES, 33SAB, 33MLS, 34TSB)
- "Smart Slide" free-standing dinette

- 15,000 BTU ducted A/C
- Fireplace (30RLI, 33RES, 33SAB, 33MLS)

## DRY CAMPING FEATURES

- 12 Volt stereo
- Large fresh, gray and black tanks (all models)
- All slide-out lights are 12 Volt
- Space for dual batteries
- Entire underbelly enclosed to keep debris off tanks, water lines, etc.
- Fully enclosed and heated dump valves

## SAFETY FEATURES

- Manual backup on all main slide-outs
- LP sensor
- Smoke detector
- Fire extinguisher
- Carbon monoxide detector

## X-LITE NOTABLE FEATURES

- Executive chef kitchen (most models)
- Hand glazed hardwood cabinet doors throughout

- Oversized pots and pans drawer (most models)
- Deep oversized stainless steel kitchen basin with sink cover
- Residential full-extension - steel ball bearings drawer guides
- Residential toilet with foot pedal flush
- E-Z lube hubs on axles (all models)
- One-piece seamless tan T.P.O. roof
- All windows in main slide-out open
- Cable/satellite prep
- 40" TV (30RLI, 33RES, 33SAB, 33MLS)
- Correct track
- King beds on all floor plans
- 16.2 gallons of hot water
- 8 cu. ft. refrigerator on all floor plans
- Solid surface kitchen countertops

*\*Mandatory option*

VINEYARD



CASHMERE



PLATINUM



# DARE TO COMPARE



- Highest trade-in and resale value in the industry on average
- Enclosed, underbelly with heated and enclosed dump valves
- 16.2 Gallons per hour - quick recovery water heater (great for bunkhouses)
- Slide-out seal is mounted in a "T" track (no sticky tape to hold slide seals on)

- Easy access laundry chute (most models)
- Residential foot flush toilets
- Pleated shades standard on all models
- Five side welded aluminum super structure
- 5" Fabricated stamped steel-truss roof rafters on 16" centers
- Bowed roof rafters (vaulted ceiling)
- Best in class LED electric awning
- Battery disconnect switch

- Painted front cap with docking lights
- R-7 sidewall insulation, R-9 floor, R-14 ceiling insulation
- Fully ducted air conditioning featuring triple insulated, foil-wrapped, light-weight ducts
- 12 Volt compatible for dry camping
- LED lights throughout





29RES SHOWN IN VINEYARD DECOR



## FIFTH WHEELS

Taking the quality of a Cougar and matching it with the size and weight your vehicle can tow! X-Lite Cougar offers multiple 1/2 ton towable fifth wheel floorplans.



29RES BEDROOM SHOWN IN VINEYARD DECOR





**28RKS AND 29RES WARDROBE SLIDE**



**26RLS BATHROOM  
with 30" x 60" SHOWER**



**28RKS SHOWN IN PLATINUM DECOR**



**28RKS SHOWN IN PLATINUM DECOR**



*Cougar*  
by Keystone **Lite**



## X-LITE DURABLE CONSTRUCTION

- |   |                                      |
|---|--------------------------------------|
| 1 Gel Coated Filon Exterior                       | 14 Step Light on Frame               |
| 2 Luan Layer                                      | 15 Underbelly Heat Duct              |
| 3 Hi-Density Block Foam Insulation (Sidewall R-9) | 16 PACO I-Beam Frame                 |
| 4 Interior Wallboard                              | 17 One Piece T.P.O. Roof             |
| 5 Side Welded Aluminum Super Structure            | 18 3/8" Walkable Roof Decking        |
| 6 BeauFlor® Flooring                              | 19 R-14 Fiberglass Batten Insulation |
| 7 Carpet Padding                                  | 20 5" Crowned / Stamped Roof Trusses |
| 8 1st Layer Floor Decking                         | 21 Sloped Slide Roof                 |
| 9 2nd Layer Floor Decking with Staggered Seams    | 22 Wiper Seals                       |
| 10 Hi-Density Block Foam Insulation (Floor R-9)   | 23 Bulb Seal in T-Track              |
| 11 Aluminum Floor Studs                           | 24 Max Turn Aerodynamic Front Cap    |
| 12 3rd Layer Floor Decking                        | 25 EZ Lube Axles                     |
| 13 Moisture Barrier Wrap                          | 26 MOR/ryde Suspension System        |
|   | 27 Radial Tires                      |
|   | 28 Radius Entry Steps                |
|   | 29 2" Welded Aluminum Wall Framing   |



## FLOOR (R-9)

- |  |  |
|--|--|
| 1 Aluminum Studded Laminated Floor                       | 7 Welded Steel Cross Members             |
| 2 3" Large Capacity Insulated Heat within Floor          | 8 Woven Moisture and Vapor Barrier       |
| 3 Heated and Enclosed Underbelly                         | 9 Hi-Density Block Foam Insulation (R-9) |
| 4 1/4 Polypropylene Underbelly Guard                     | 10 BeauFlor Flooring                     |
| 5 2" Heat Duct Into Underbelly                           |  |
| 6 Heated and Enclosed Water Lines, Dump Valves and Tanks |  |





## MOR/RYDE SUSPENSION

What does "Best-In-Class" mean for a suspension system?

It means that all suspensions are not created equal. Like all other products, there are unique product segments relative to price and quality demands.

### CRE/3000 RUBBER EQUALIZER

#### FOR SUSPENSIONS, IT LOOKS LIKE THIS:

UPGRADED EQUALIZER = IMPROVED SUSPENSION TRAVEL OVER STOCK STANDARD, STOCK STEEL ROCKER ARM & LEAF SPRINGS



## POLAR PACKAGE

The Cougar X-Lite Polar Package expands your camping season with an enclosed and heated underbelly. Not only will you have improved aerodynamics, but your valves, tanks and water lines are all protected.

We also add upgraded insulation to our slide-out floors to control the hot and cold exchange.



## PATENTED COUGAR HITCH VISION

Hitch Vision moves the dial forward in what customers expect from an RV. There's no looking back!

Hitch Vision gives the fifth wheel user complete confidence to back up and align their truck to Cougar's extended hitch pin using only the built-in mirror for guidance. Automotive LED docking lights, which can be controlled by the E-Z Camp Cougar Remote, allow you to load or unload camping gear day or night. (Hitch Vision also comes in handy when using the E-Z Camp Cougar Remote to raise and lower landing gear.) Once you've used Hitch Vision, "there's no looking back" to the inconvenience of turning or straining to see your fifth wheel.

## MAX TURN FRONT CAP

Combining focused design and unique product specifications, Max Turn Technology is the leader in optimum turn radius.

Unlike the competition, Cougar uses continuous contoured tubular steel for optimum strength and support behind the engineered tapered fiberglass front cap.

Also, Cougar is equipped with a heavy duty extended hitch. Combined - Max Turn Technology makes turning and maneuvering a breeze.





*Stay in Touch*



Cougar is always just a touch away. You'll find 360 virtual tours, location of your nearest dealer, photos, videos and all of the latest information about Cougar on our easy to navigate website. Everything you need can be accessed anytime, day or night, from home or on the road. You can also find us on the Keystone RV facebook.

[www.keystonerv.com/Cougar-Xlite](http://www.keystonerv.com/Cougar-Xlite)

## Quick Camp™

Set up & take down camp outside or inside

### Slide Rooms

Press slide room button then press right arrow to bring slide out, press left arrow to bring slide in



### Power Awning

Press awning button then press right arrow to awning out, press left arrow to bring awning in



### Tight Spaces?

Set up camp quickly and easily with Quick Camp™



### Rear Stabilizer Jacks

Press rear stabilizer button then press down arrow to bring jacks down, press up arrow to bring jacks up



### Awning Light

Press light button to turn light on and off



### Can't See?

Activate your lights with Quick Camp™



**Cougar**  
by keystone

Using Lippert Components™ **linC** WIRELESS TECHNOLOGY

TOUCH SCREEN REMOTE is standard in all Cougar X-Lite fifth wheels



4 pt. level up system is available on Cougar X-Lite fifth wheels (N/A 25BHS, 26RLS, 27RDS)





X-Lite Kitchen's feature stainless steel range, microwave, sink, plus have solid surface countertops.

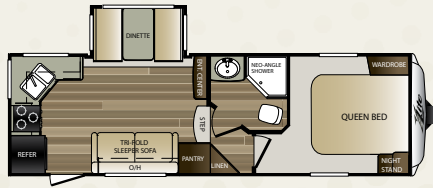
## ***COUGAR X-LITE FEATURES***



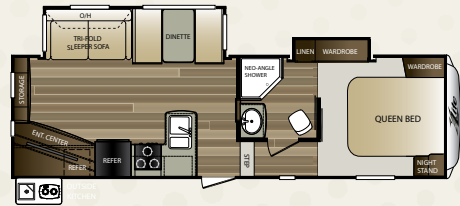
### **CORRECT TRACK ALIGNMENT SYSTEM:**

- With Correct Track, the trailer tows with the tow vehicle, not against it
- Tires run smoother and cooler
- Improves fuel economy
- Helps preserve the life of the RVs equipment, appliances, etc
- Dramatically improves tire life

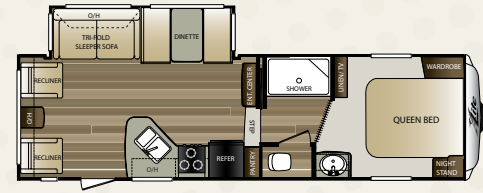
# X-LITE FIFTH WHEEL FLOORPLANS



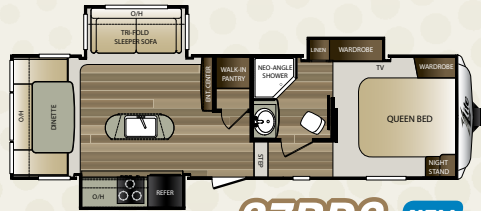
**25RKS**



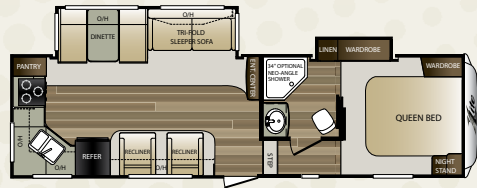
**25BHS NEW**



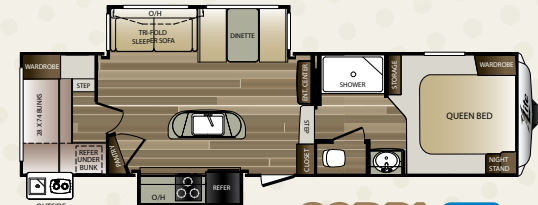
**26RLS**



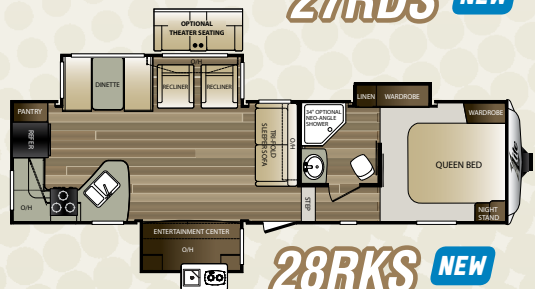
**27RDS NEW**



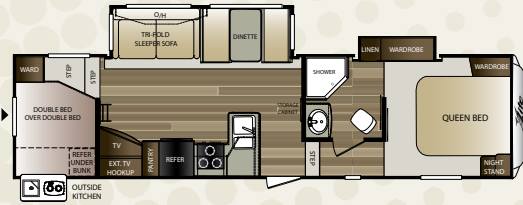
**27RKS**



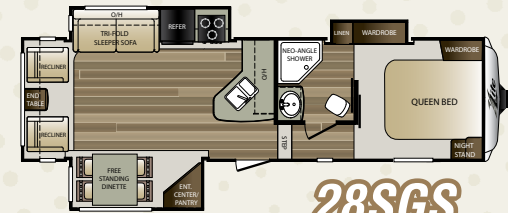
**28DBI NEW**



**28RKS NEW**



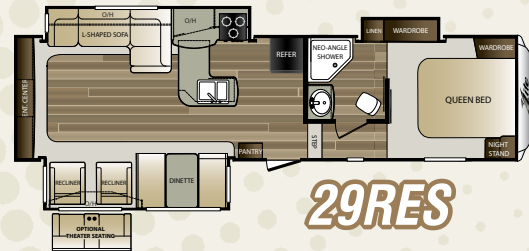
**28RDB IMPROVED**



**28SGS**



**29RLI**



**29RES**

MODEL	SHIPPING WEIGHT	CARRYING CAPACITY	HITCH	LENGTH*	EXTERIOR WIDTH	HEIGHT	FRESH WATER	WASTE WATER	GRAY WATER	LPG	AWNING
25RKS	6400	1800	1120	27' 2"	8'	11' 11"	43	30	60	60	13'
25BHS	7135	2865	1285	28' 11"	8'	11' 11"	43	30	60	60	15'
26RLS	6770	1430	1195	29' 4"	8'	11' 11"	43	30	60	60	13'
27RDS	7140	2860	1375	30'	8'	11' 11"	43	30	60	60	10'
27RKS	7045	2955	1230	30' 5"	8'	11' 11"	43	30	60	60	16'
28DBI	7795	2205	1380	32' 11"	8'	11' 9"	43	30	60	60	19'
28RDB	7648	2352	1390	32' 11"	8'	11' 11"	43	30	60	60	19'
28RKS	8170	1830	1415	32' 11"	8'	11' 11"	43	30	60	60	20'
28SGS	7756	2244	1410	30' 10"	8'	11' 11"	43	30	60	60	10'
29RLI	7814	2186	1535	32' 7"	8'	11' 11"	43	30	60	60	10'
29RES	8020	1980	1340	32' 11"	8'	11' 11"	43	30	60	60	10'

DISCLAIMER: Product information is as accurate as possible as of the date of publication of this brochure. Features, floor plans, and specifications are subject to change without notice. Please also consult Keystone's web site at [keystonerv.com](http://keystonerv.com) for more current product information and specifications. Tow Vehicle Disclaimer. CAUTION: Owners of Keystone recreational vehicles are solely responsible for the selection and proper use of tow vehicles. All customers should consult with a motor vehicle manufacturer or their dealer concerning the purchase and use of suitable tow vehicles for Keystone products. Keystone disclaims any liability or damages suffered as a result of the selection, operation, use or misuse of a tow vehicle. KEYSTONE'S LIMITED WARRANTY DOES NOT COVER DAMAGE TO THE RECREATIONAL VEHICLE OR THE TOW VEHICLE AS A RESULT OF THE SELECTION, OPERATION, USE OR MISUSE OF THE TOW VEHICLE. \*Length is defined as the distance from the centerline to the hitch pin/coupler to rear bumper of the trailer.



**CAMPING-IN-STYLE PACKAGE\***

- Pleated shades throughout
- Black trim safety glass windows
- Microwave oven with turn style
- Aluminum framed sidewalls, floors, front, rear and slide rooms
- 5" Fabricated stamped steel roof trusses
- 13,500 BTU air conditioner
- Raised panel upper & lower cabinet doors throughout
- XL Folding grab handle

**VALUE PACKAGE\***

- True home CD/DVD system with speakers and separate zones (12-Volt compatible); MP3 player hookup on stereo with Bluetooth
- All weather outside speakers
- Gas/electric water heater with quick recovery
- Residential shower/tub surround
- TV antenna
- Laminated fiberglass sidewalls
- 32" LCD TV

**CONVENIENCE PACKAGE\***

- Patented front cap with docking lights
- Outside shower
- Stainless steel refrigerator
- Spare Tire
- MOR/ryde suspension
- Slam baggage doors
- Step light
- Battery disconnect
- LP quick connect

**X-LITE PACKAGE\***

- Black tank flush
- Electric awning
- Radial tires
- Carbon monoxide detector

**MANDATORY OPTIONS\***

- Polar package
- Cougar camp remote
- Aluminum wheels

**X-LITE OPTIONS**

- "Smart Slide" free-standing dinette
- 15,000 BTU ducted A/C
- Two chairs in place of sofa (25RKS)
- Executive Package (frameless windows, solid surface countertops)
- Theater seating (28RKS, 29RLI, 29RES)

# X-LITE FIFTH WHEEL STANDARDS, OPTIONS AND DECORS

**DRY CAMPING FEATURES**

- 12 Volt stereo
- Large fresh, gray and black tanks (all models)
- All slide-out lights are 12 Volt
- Space for dual batteries
- Entire underbelly enclosed to keep debris off tanks, water lines, etc.
- Fully enclosed and heated dump valves

**SAFETY FEATURES**

- Manual backup on all main slide-outs
- LP sensor
- Smoke detector
- Fire extinguisher
- Carbon monoxide detector

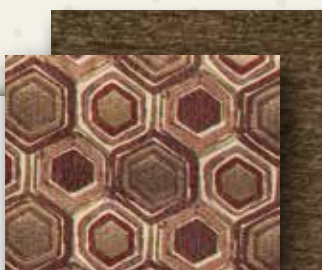
**X-LITE NOTABLE FEATURES**

- Executive chef kitchen
- Hand glazed maple raised panel cabinet doors throughout
- Oversized pots and pans drawer (most models)
- Deep oversized kitchen basin with sink cover

- Residential full-extension - steel ball bearings drawer guides
- Residential porcelain toilet with foot pedal
- E-Z lube hubs on axles (all models)
- 30,000 BTU furnace
- One-piece seamless T.P.O. roof
- All windows in main slide-out open
- Cable/satellite prep
- 32" TV (N/A on 21RBS)
- 40" TV (29RLI, 29RES)
- Cougar camp remote
- Correct track

*\*Mandatory option*

VINEYARD



CASHMERE



PLATINUM



# DARE TO COMPARE



- Highest trade-in and resale value in the industry on average
- Enclosed, underbelly with heated and enclosed dump valves
- 16.2 Gallons per hour - quick recovery water heater (great for bunkhouses)
- Slide-out seal is mounted in a "T" track (no sticky tape to hold slide seals on)

- Cougar executive chef kitchen
- Easy access laundry chute (most models)
- Porcelain foot flush toilets
- Pleated shades standard on all models
- Five side welded aluminum super structure
- 5" Fabricated stamped steel-truss roof rafters on 16" centers
- Best in class electric awning
- Battery disconnect switch

- Exclusive MOR/ryde upgraded suspension
- Patented front cap with docking lights
- R-9 sidewall insulation, R-9 floor, R-14 ceiling insulation and R-15 astro-foil in the slide-out
- Fully ducted air conditioning featuring triple insulated, foil-wrapped, light-weight ducts
- 12 Volt compatible for dry camping



# Cougar *by Keystone* Lite



**[WWW.KEYSTONERV.COM/COUGAR](http://WWW.KEYSTONERV.COM/COUGAR)**



CONNECT WITH KEYSTONE RV AND STAY UP TO DATE WITH PRODUCT NEWS AND INFORMATION



Go RVing  
Life's A Trip

2642 Hackberry Drive  
PO Box 2000  
Goshen, IN 46527-2000  
(574) 535-2100



**Keystone RV  
Company**

[www.keystonerv.com](http://www.keystonerv.com)

YOUR LOCAL DEALER:

## BUY LOCALLY PURCHASING YOUR RV LOCALLY

MAY 2016

It's up to you where you purchase your new Cougar, but may we suggest your local dealer? Not only does it help your local economy and provide jobs, but it will also give you an opportunity to develop a service relationship with someone that will come to know you and your coach. Congratulations on finding the best built, best equipped, best value in the industry, and happy travels!