

2007 PURSUIT®



2007 PURSUIT®



"the motorhome people"™

Explore life with style.

The open road awaits...



Pursuit is designed for maximum driver comfort and safety. An automotive style dash puts the controls at your fingertips. A standard 7" rear vision camera increases visibility.



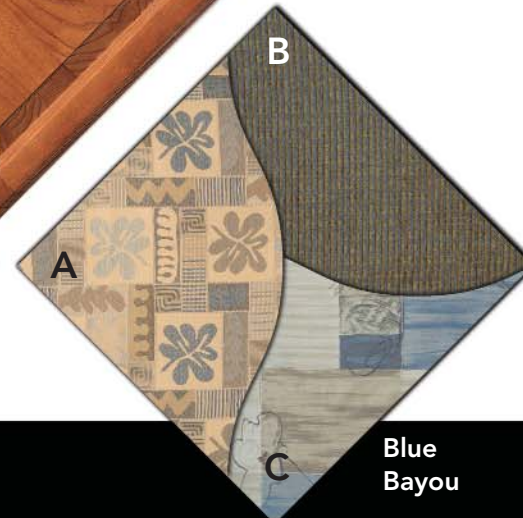
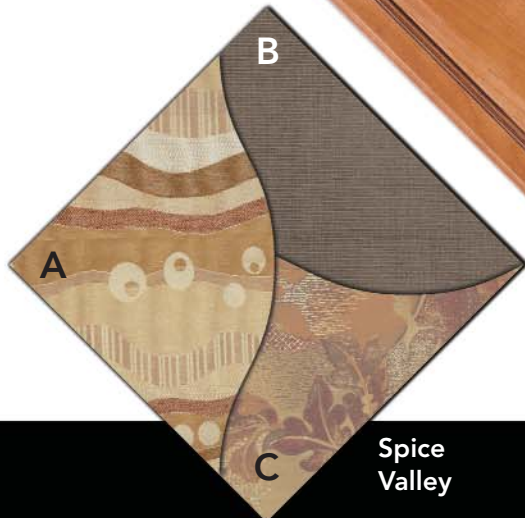
Prepare your favorite meal, or catch a quick snack. Pursuit's kitchen includes satin nickel hardware, a double lever high spout faucet, warm wood cabinetry, a large double bowl sink and generous pull-out pantry storage. (Shown in Welbeck Birch)

Decor

Welbeck
Birch

Brazilian
Cherry

- A - Main
- B - Accent
- C - Bedspread



Spice
Valley

Manchester
Mocha

Blue
Bayou

Every curve in the road is an exciting new experience when you choose your destination and pursue life from behind the wheel of the Pursuit® by Georgie Boy™. Turn onto the road less traveled, or reconnect with friends and family. Take the extra time to see it all with comfort, style and a feeling of freedom, knowing at the end of the day all the comforts of home await you.

A world full of new experiences is calling you.



Well appointed style welcomes you in the Pursuit. Flexsteel® captain's chairs recline and swivel for your comfort. A cockpit area snack tray keeps things tidy. The deluxe sofa and sofa table offer maximum versatility. A large 27" flat-screen television provides the big picture, anytime.



See the world more clearly with the one-piece wrap around windshield. Curb appeal continues with sleek eye-catching exterior graphics and custom front and rear caps.

Make each day an adventure.

Pursuit is the perfect vehicle for free-spirited travelers. It's your private retreat, or the center of activity. Large windows fill the space expanding slide rooms and well-equipped kitchen with natural light. Plush furnishings and designer appointments create a luxurious atmosphere throughout.





The coach command center provides central access to commonly used gauges and switches.



The 3540 ds floorplan has a standard bunk bed/entertainment zone that creates the ultimate getaway for younger travelers or adults. An available 15" LCD television with auxiliary hook ups makes for carefree rest and recreation. An office with desk, in place of the bunks, is also available as an option. (3540 ds only)



The large bedroom windows in the Pursuit with optional pleated shades allow natural light during the day and plenty of privacy after dark setting the tone for rest and relaxation.

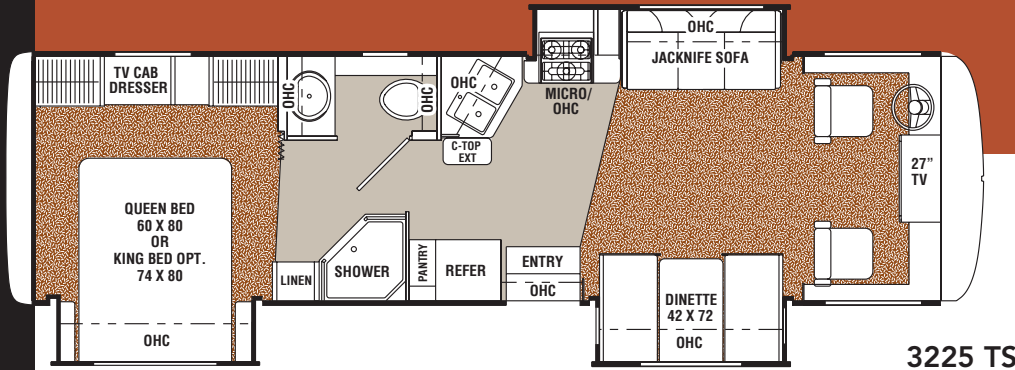
The well equipped bath area features a glass shower door, porcelain foot-flush toilet and designer faucet.



Light and Airy

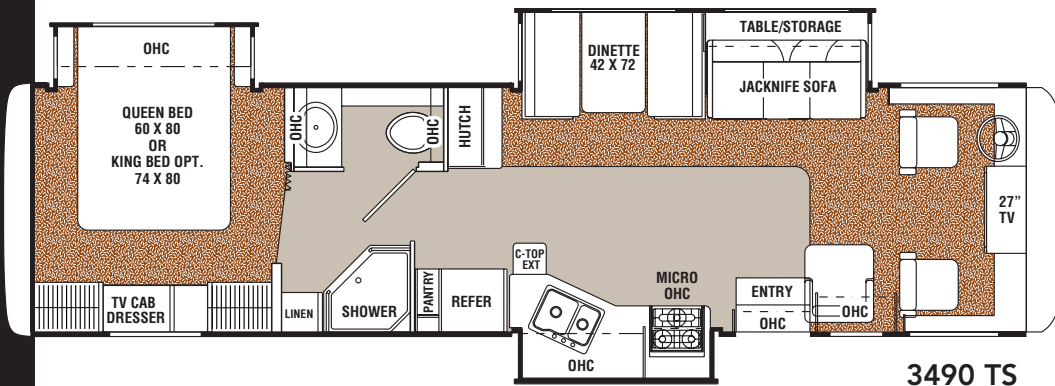
Organization is a breeze with plenty of wardrobe storage space. A 20" flat-screen television is available as an option.

Floorplans



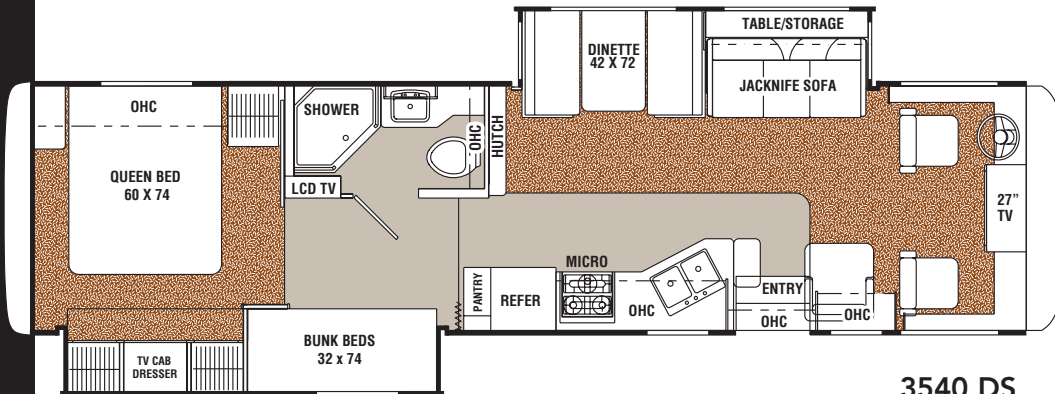
3225 TS

Available with Option B



3490 TS

Available with Option A and B

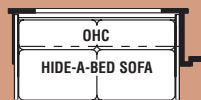


3540 DS

Available with Options A, B, C



Option A
Residential Dinette



Option B
Hide-A-Bed Sofa



Option C
Office Option

Pursuit Class A	3225 TS	3490 TS	3540 DS
Chassis	FORD	FORD	FORD
Chassis Model	F-53	F-53	F-53
Engine Size (liter)	V10-6.8L	V10-6.8L	V10-6.8L
Wheel Base	208"	242"	242"
Tire Size	245/70R19.5F	245/70R19.5F	245/70R19.5F
Rear Axle Ratio	5.38	5.38	5.38
GVWR (lbs.)	20,500	22,000	22,000
CW (lbs.)	16,800†	18,600†	18,400†
GAWR Front (lbs.)	7,000	7,500	7,500
GAWR Rear (lbs.)	13,500	14,500	14,500
GCWR (lbs.)	26,000	26,000	26,000
Exterior Length	32'8"	35'6"	35'6"
Exterior Clearance Height*	11'9"	11'9"	11'9"
Exterior Width	8'4"	8'4"	8'4"
Exterior Storage Capacity (cu. ft.)	100	140	148
Sleeping Capacity	5	5	5
Interior Width	96"	96"	96"
Interior Height	80"	80"	80"
Fuel Capacity (gal.)	75	75	75
Fresh Water Capacity (gal.)	86	86	86
Waste Water Capacity (gal.)	45	45	45
Grey Water Capacity (gal.)	53	48	48
Water Heater Capacity (gal.)	6	6	6
LP Gas Capacity (lbs.)	85	85	85
Furnace Rating (x1000) BTU	35	35	(2) 25
Awning Size (ft.)	17	20	14

† = Estimated

* Includes clearance for roof A/C

GVWR (Gross Vehicle Weight Rating): The maximum permissible weight of the unit, including the UVV plus all fluids, cargo, optional equipment and accessories. For safety and product performance, do not exceed the GVWR.

CW (Curb Weight): The weight of the unit without factory or dealer installed options, plus allowance for the weight of full fuel capacity. The "payload capacity" for all other fluids, cargo, occupants, optional equipment and accessories can be determined by subtracting the CW from the GVWR.

GAWR (Gross Axle Weight Rating): The total weight each front/rear axle, suspension and tire system is designed to carry. When loading the unit, care should be taken to balance cargo weight in consideration of the GAWRs.

GCWR (Gross Combined Weight Rating): The maximum total weight of the loaded unit, plus a tow vehicle. This includes the weight of both the unit and tow vehicle, for each, all other fluids, cargo, occupants, optional equipment and accessories.

Wider Widths: Numerous Georgie Boy floorplans feature the "wide body" design concept, which gives you significantly enhanced interior living space and innovative floorplans. In making your purchase decision, you should be aware that a few states restrict access on some or all roads within the state to vehicles with a maximum 96" width, although special road usage permits may be available. Vehicles up to 102" in width are permitted in the vast majority of states. You should confirm the road usage laws in the states of interest to you before making your purchase decision.

IMPORTANT NOTE:

All capacities are approximate, and all dimensions are nominal. Georgie Boy motorhomes are designed to allow for a wide variety of uses, extended trips with two people or short trips with multiple people. Accordingly, each unit allows ample room for sleeping, seating, fluids and cargo. While the customer is the beneficiary of this design, the customer also bears the responsibility to select the proper combination of passengers, cargo, load, and tow vehicle without exceeding the chassis weight capabilities. Consumer may need additional braking capacity to tow loads greater than 1,000 pounds. Seat belts should always be worn for passenger safety. Seat belts are provided at most locations to allow convenience in selecting which seat to occupy. However, it is not intended that all seating positions equipped with a seat belt may be occupied while the vehicle is in motion, without regard to other weight factors.

All Georgie Boy motorhomes are designed to ensure that the number of passengers allowed while the vehicle is in motion will always at least equal the stated sleeping capacity. Though extra seat belts may be provided, for your safety and the proper operation of your vehicle, limit your passengers to the number allowed by the Net Carrying Capacity of your vehicle.

Standard Features

Interior Appointments

- ◆ Welbeck Birch Cabinetry
- ◆ Hardwood Cabinet Doors & Drawers
- ◆ Raised Panel Overhead Cabinet Doors
- ◆ Techwood Drawers
- ◆ European Drawer Guides
- ◆ Satin Nickel Hardware
- ◆ Wood Edge Kitchen Countertop
- ◆ Linoleum Flooring (Kitchen, Bath & Entryway)
- ◆ Safety Glass Windows Throughout
- ◆ Jalousie Windows in Bedroom
- ◆ Reclining & Swivel Cloth Pilot Seats
- ◆ Jackknife Sofa
- ◆ Lounge Chair (3490 TS, 3540 DS)
- ◆ Booth Dinette w/Storage Access Doors
- ◆ Cockpit Area Snack Tray
- ◆ Bedroom TV Cabinet
- ◆ Mini Blind Window Coverings
- ◆ Ozite Ceiling Material
- ◆ Owners Information Package
- ◆ Double Lever High Spout Faucet
- ◆ Large Double Bowl Kitchen Sink
- ◆ Silverware Drawer (3225 TS)
- ◆ Wood Pull Out Kitchen Pantry Boxes

Sleeping

- ◆ Queen Bed 60" x 74" (3540 DS)
- ◆ Queen Bed 60" x 80" (3225 TS, 3490 TS)

- ◆ Windshield Privacy Wrap
- ◆ Deluxe Innerspring Mattress
- ◆ Designer Bedspread
- ◆ Bunk Beds in Hallway (3540 DS)

Appliances & Accessories

- ◆ Microwave Oven
- ◆ Range Hood w/Light
- ◆ 3-Burner Range w/Oven
- ◆ Range Cover
- ◆ Flush Mount Double Door Refrigerator
- ◆ 15" LCD TV - Hallway (3540 DS)
- ◆ 27" Flatscreen TV - Coach
- ◆ Dash Stereo w/CD Player
- ◆ TV Antenna w/Booster & Rotor Package
- ◆ Cable TV Jacks
- ◆ Phone Jack
- ◆ Prewire for Satellite Antenna

Plumbing & LP Systems

- ◆ Porcelain Marine Toilet
- ◆ One Piece ABS Tub Surround
- ◆ Glass Shower Door
- ◆ Skylight Over the Shower
- ◆ Power Bath Vent
- ◆ 6-Gallon E.I. Water Heater
- ◆ Demand Water Pump
- ◆ Lighted Water Panel & Termination Area w/Wash Station
- ◆ 20' Sewer Hose
- ◆ Black Tank Rinse System
- ◆ Water Heater Bypass
- ◆ House Water Filtration System
- ◆ 85 lb. LP Tank
- ◆ Heated & Enclosed Holding Tanks

Electrical & Lighting

- ◆ 30 Amp Power Cord
- ◆ 55 Amp 110/12-Volt Power Converter
- ◆ GFI Circuit
- ◆ Outside Recept (DS)
- ◆ Prewire for Generator Ready
- ◆ Auxiliary Batteries (Dual Deep Cycle)
- ◆ Lighted Storage Boxes
- ◆ Patio Light
- ◆ Coach Command Center
- ◆ Entry Step Switch Panel
- ◆ Battery Disconnect
- ◆ 2 - 12-Volt Power Outlet at Dash
- ◆ 110-Volt Outlet at Passenger Dash
- ◆ Fluorescent Light At Kitchen & Bedroom Vanity

Heating & Air Conditioning

- ◆ 35,000 BTU E.I. Furnace (3225 TS, 3490 TS)
- ◆ Dual 25,000 BTU Furnace (3540 DS)
- ◆ Prewire for Rear Roof A/C

Cockpit

- ◆ Tilt Steering Wheel
- ◆ Defroster Assist Fans w/Dash Switch
- ◆ Cruise Control
- ◆ Intermittent Wipers
- ◆ Dash Air Conditioning
- ◆ Exterior Heated Mirrors w/Remote
- ◆ 7" Rear Vision Camera

Exterior & Construction

- ◆ Custom Fiberglass Front & Rear Caps
- ◆ One-piece Windshield
- ◆ Crowned & Laminated TPO Roof
- ◆ Rear Window
- ◆ Laminated 2" Sidewalls
- ◆ Basement Floor Design
- ◆ Aluminum Bus Style Baggage Doors w/Paddle Latches
- ◆ Metal Trunk Boxes w/Felt Lining
- ◆ Power Entrance Step
- ◆ Dead Bolt Lock-Entrance Door
- ◆ Radius Entrance Door
- ◆ Radial Tires
- ◆ Stainless Steel Wheel Inserts
- ◆ Front & Rear Mud Flaps
- ◆ Under Mounted Spare Tire
- ◆ Pushbutton Fully Automatic Hydraulic Leveling Jacks
- ◆ Gutter Awning Rail
- ◆ Slideout Awnings
- ◆ Automotive Underbody Undercoating
- ◆ Daytime Running Lights
- ◆ Handrail at Entrance Door
- ◆ 5,000 Towing Hitch w/7-Way Plug
- ◆ Rear Mounted Roof Ladder
- ◆ Patio Awning

Safety

- ◆ LP Leak Alarm
- ◆ Smoke Detector
- ◆ Carbon Monoxide Detector
- ◆ Fire Extinguisher
- ◆ Emergency Start Switch

Optional Features

- ◆ Brazilian Cherry Cabinetry
- ◆ King Bed 74"x 80" (3225 TS, 3490 TS)
- ◆ Pleated Window Shades
- ◆ Residential Dinette w/4 Chairs (2 Freestanding/ 2 Folding) (n/a 3225 TS)
- ◆ Hide-A-Bed Sofa
- ◆ Desk & Bookcase - In Place of Bunk Beds (3540 DS)
- ◆ Bunk Bed Delete Option (3540 DS)
- ◆ VCR/DVD Combo
- ◆ 20" Flatscreen Bedroom TV
- ◆ Large Double Door Refrigerator
- ◆ Heat Strip w/Roof A/C
- ◆ Half Time Convection w/50 Amp Service
- ◆ 6-Gal. Gas/Electric Water Heater w/ 50 Amp Service
- ◆ Soft Touch Driver & Passenger Seats
- ◆ Thermopane Windows
- ◆ Painted Skirts w/Graphics
- ◆ 4.0 KW Onan Generator & 15,000 BTU Roof Air Conditioner
- ◆ 5.5 KW Onan Generator, 13,500 & 11,000 BTU Roof Air Conditioner w/50 Amp Service
- ◆ CSA Upfit
- ◆ Transit Bra

This convenient utility bay houses a water pump switch, water utility panel, outlets for coaxial jacks and a whole house water filter for total water filtration.



Ample lighted storage compartments with secure paddle latch, bus-style baggage doors provide easy access to all your gear.



Fill up at either side of the gas pump with the handy rear fuel fill.



*Presenting the Pursuit
by Georgie Boy™*

You've decided to travel.
Freedom has never meant more to you.
You've planned for this day,
and now it's here.

At GBM®, we've been in the recreational
vehicle business since 1968.

Our goal is to design and build
motorhomes that can keep up with the
explorer in you. This means working hard
to ensure that every detail of your
new Georgie Boy™
is right – before you turn the key.

Of course, our commitment to
quality also means a few
late-night trips to the coffee maker.

But then again, that's why
we call ourselves
the motorhome people.

Your Georgie Boy™ Dealer



"the motorhome people"®

A world full of new experiences is calling you.



Georgie Boy™

21888 Beck Drive ♦ Elkhart, IN 46516 ♦ Phone: 877.876.9024 ♦ Fax: 574.295.8687

Website: www.georgieboy.com ♦ Owners Club: www.georgieboyrvclub.com

All information contained in this brochure is believed to be accurate at the time of publication. However, during the model year, it may be necessary to make revisions and Georgie Boy™ reserves the right to make all such changes without notice, including changes in prices, colors, materials, equipment and specifications, as well as the addition of new models and the discontinuance of models shown in this brochure. Therefore, please consult with your Georgie Boy™ dealer and confirm the existence of any materials, design or specifications that are material to your purchase decision.