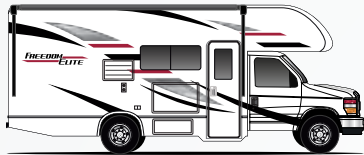


FREEDOM ELITE®



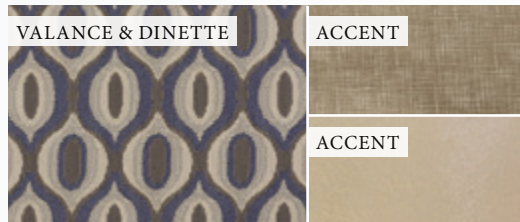
STANDARD GRAPHICS



Thinking about buying a new coach? Have a question about one of our motorhomes? Trying to find a dealer near you?

Our Coach Link® support team is here to help you in your purchase of a new motorhome! This dynamic team focuses directly on helping you find the answers you need to get you behind the wheel of one of our great new motorhomes.

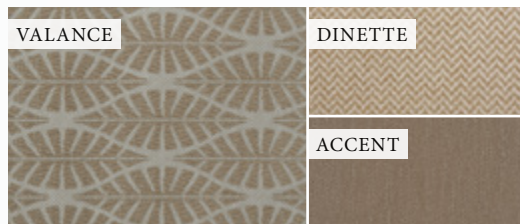
Call 800.860.5658 or visit us online at thormotorcoach.com.



BAYSIDE II



MOROCCAN MIST



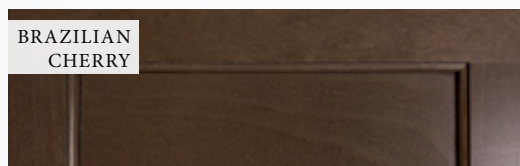
PALM SHORES



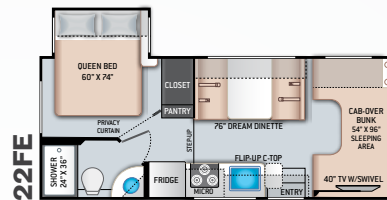
FLOORING



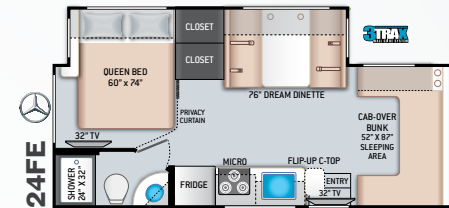
COUNTERTOPS



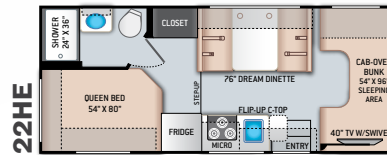
BRAZILIAN CHERRY



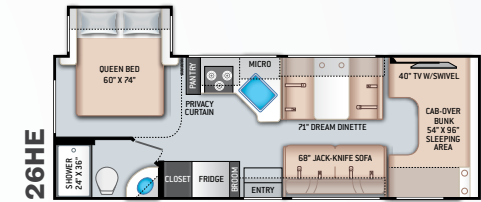
22FE



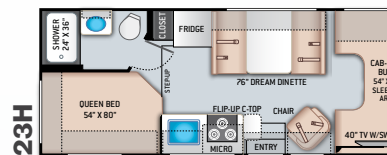
24FE



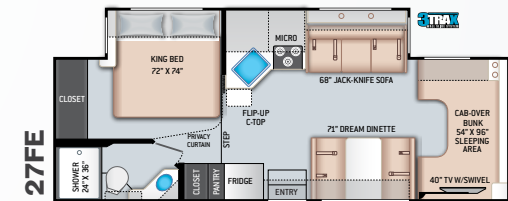
22HE



26HE

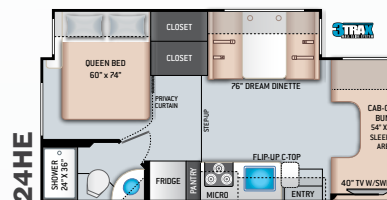


23H

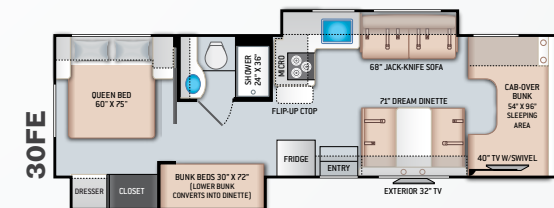


27FE

OPTIONAL EXTERIOR 32\"/>



24HE



30FE

EXTERIOR 32\"/>

Featured Highlights

CONSTRUCTION & EXTERIOR

- Ford® E-Series Chassis with 6.8L Triton® V10, 305HP & 420 lb.-ft. Torque - TorqShift® 6-Speed Automatic Transmission (22FE, 22HE, 23H, 24HE, 26HE, 27FE & 30FE)
- Mercedes-Benz® Sprinter Chassis with 3.0L V6, 188HP & 325 lb.-ft. Torque (24FE)
- Premium One-Piece TPO Roof
- One-Piece Fiberglass Front Cap
- Slick Fiberglass Exterior with Graphics Package
- Electric Stabilizing System (23H, 24FE, 24HE & 27FE)
- MEGA-Storage™ Compartment
- Portable Folding Table (23H)
- Lighted Rotocast Storage Compartments
- Flush Mount Radius Compartment Doors
- Power Patio Awning with Integrated LED Lighting
- Slideout Room Topper Awnings (N/A 22HE & 23H)
- Roof Ladder
- Electric Entry Step (24FE)
- Drop-Down Stairwell Entry Step (N/A 24FE)
- Black Framed Windows
- 5,000-lb. Trailer Hitch (24FE)
- 8,000-lb. Trailer Hitch (N/A 24FE)

CONSTRUCTION & EXTERIOR OPTION

- Chevrolet® Dually Chassis with 6.0L V8, 323HP & 373 lb.-ft. Torque (22HE)

AUTOMOTIVE & COCKPIT

- Touchscreen Dash Radio with Back-up Monitor & Integrated Camera
- SiriusXM® Radio Tuner & Antenna
- Deluxe Exterior Mirrors (N/A 24FE)
- Deluxe Heated/Remote Exterior Mirrors (24FE)
- Power Windows & Door Locks
- Keyless Entry System (24FE, 27FE & 30FE)
- Tilt Steering Wheel
- Cruise Control
- Map Light
- Emergency Engine Start Switch (N/A 24FE)
- Leatherette Driver & Passenger Captains Chairs (24FE)
- Windshield Privacy Curtain
- Aluminum Running Boards (N/A 24FE)
- Valve Stem Extenders (24FE, 27FE & 30FE)
- Stainless Steel Wheel Liners

INTERIOR

- Rubber Tread Entry Steps with Lighted Step Well
- Residential Vinyl Flooring
- 84" Interior Ceiling Height
- Hard Vinyl Ceiling
- LED Lighting
- Ceiling Ducted Air Conditioning System (24FE, 24HE, 26HE, 27FE & 30FE)

- Cab-Over Bunk Ladder
- High-Sheen Flat Panel Cabinet Doors with Nickel Finish Hardware
- Ball-Bearing Metal Drawer Guides
- Window Privacy Shades
- Dream Dinette® Booth
- Fabric Barrel Chair (23H)
- Fabric Jack-Knife Sofa (26HE, 27FE & 30FE)

KITCHEN

- Double Door Gas/Electric RV Refrigerator
- Recessed 3-Burner Gas Cooktop/Oven with Glass Cover (N/A 24FE)
- Recessed 3-Burner Gas Cooktop with Glass Cover (24FE)
- Protective Cover & Task Lighting Above Cooktop
- Convection Microwave Oven (24FE)
- Microwave Oven (N/A 24FE)
- Pressed Laminate Countertops (Kitchen, Dinette & Living Room Area)
- Flip-Up Countertop Extension (N/A 26HE)
- Pop-Up Countertop Outlet & Charging Center for Electronics (27FE & 30FE)
- Pantry (24HE, 26HE & 27FE)
- Kitchen Waste Basket
- Large Single Bowl Stainless Steel Sink with Single Handle Faucet & Pull-Down Sprayer

BEDROOM & BATHROOM

- King Size Bed (27FE)
- Queen Size Bed (N/A 27FE)
- Bedspread & Pillow Shams
- Bunk Beds that Convert to Dinette (30FE)
- Bedroom 12-volt Outlet for CPAP Machine
- Foot Flush Toilet
- Stainless Steel Bathroom Sink
- Robe/Towel Hooks in Bathroom
- Shower with Curtain (22FE & 22HE)
- Shower with Anti-Bacterial Curtain (N/A 22FE & 22HE)


ENTERTAINMENT

- 32" TV on Manual Swivel (24FE)
- 40" TV on Manual Swivel in Cab-Over (N/A 24FE)
- 32" TV in Bedroom (24FE)
- Bedroom TV Prep with HDMI Cable (N/A 22HE, 23H & 24FE)
- Two (2) 15.5" TVs & DVD Player in Bunk Bed Area (30FE)
- HDMI Video Distribution Box (N/A 22HE & 23H)
- Cable TV Ready
- Digital TV Antenna
- Wall Cubby with Net & USB Charging Port
- Exterior 32" TV on Manual Swivel Bracket with Bluetooth® Sound Bar (27FE & 30FE)

ELECTRICAL & PLUMBING

- Onan® RV QG 3600 LP Generator (24FE)
- Onan® RV QG 4000 Gas Generator (N/A 24FE)
- 30-amp Shoreline Power Cord
- Automatic Shoreline-to-Generator Transfer Switch
- 13,500 BTU Roof Air Conditioner
- Auxiliary House Battery
- Battery Disconnect Switch
- Solar Prep - Includes Solar Controller
- Exterior LP Connection (24FE, 27FE & 30FE)
- Tankless Water Heater (24FE)
- 6-gallon DSI Gas/Electric Water Heater (N/A 24FE)
- Water Heater Bypass System (N/A 24FE)
- 1" Fresh Water Tank Drain
- 360° Siphon® RV Holding Tank Vent Cap
- Black Tank Flush System
- Outside Shower (24FE & 30FE)
- Systems Control Center

For a complete listing of available features, visit freedom-motorhomes.com.

	CLASS C							 SPRINTER
	22FE	22HE	23H	24HE	26HE	27FE	30FE	24FE
Chassis	Ford	Ford / Chevy	Ford	Ford	Ford/Chevy	Ford	Ford	Mercedes-Benz Sprinter
Gross Vehicle (GVWR)	12,500	12,500 / 12,300	12,500	12,500	12,500	14,500	14,500	11,030
Gross Combined (GCWR)	18,500	18,500 / 16,000	18,500	18,500	18,500	22,000	22,000	15,250
Wheel Base	158"	158" / 159"	158"	168"	183" / 184"	209"	223"	170"
Exterior Length (w/o ladder)	24'	24' / 24'-6"	24'-10"	24'-11"	27'-6"	29'	32'-2"	24'-8"
Exterior Height (w/AC)	11'	11'	11'	11'-2"	11'	11'	11'	11'-7"
Exterior Width (w/o mirrors)	99"	99"	99"	99"	99"	99"	99"	90"
Interior Height (living area)	84"	84"	84"	84"	84"	84"	84"	84"
Awning Size	15'	15'	15'	16'	18'	20'	10'-6"	15'
Fuel (gal)	55	55 / 57	55	55	55 / 57	55	55	26.4
LPG (lbs)	40.9	40.9	40.9	40.9	40.9	40.9	40.9	68.2
Fresh/Waste/Gray Water (gal)	40 / 29 / 25	40 / 24.5 / 37	40 / 24.5 / 38.5	40 / 34.5 / 37	40 / 29 / 25	40 / 34.5 / 37	40 / 26 / 31	30 / 24.5 / 38
Water Heater (gal)	6	6	6	6	6	6	6	Tankless
Furnace (BTUs)	19,000	19,000	19,000	30,000	30,000	30,000	30,000	30,000
Exterior Storage Capacity (cu. ft.)	30.9	50.3	69.5	40	40	55.5	64.8	48.5
Hitch Weight Rating (lbs)	8,000	8,000	8,000	8,000	8,000	8,000	8,000	5,000



IMPORTANT—PLEASE READ: This brochure reflects product design, fabrication, material, components and specifications at the date of printing, which date is disclosed below. Please visit us online at ThorMotorCoach.com or consult with your selling dealership for the latest in standards, options, specification and technical information. Photographs in the brochure may depict optional equipment or may only be available in certain floor plans. Components, appliances and the chassis may have been manufactured in a calendar year before the vehicle's designated model year. All capacities are approximate. The actual length of the vehicle may differ from that indicated in the brochure due to variances in the manufacturing processes and/or installed components. All dry weights are based on standard model features and do not include optional features or equipment. Component part and appliance manufacturers issue limited warranties covering portions of the vehicle not covered under the limited warranty we issue. Copyright Thor Motor Coach, Inc. © MY/05/2019

freedom-motorhomes.com