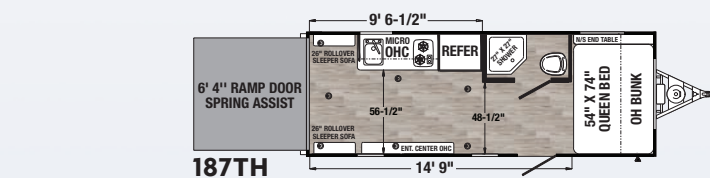
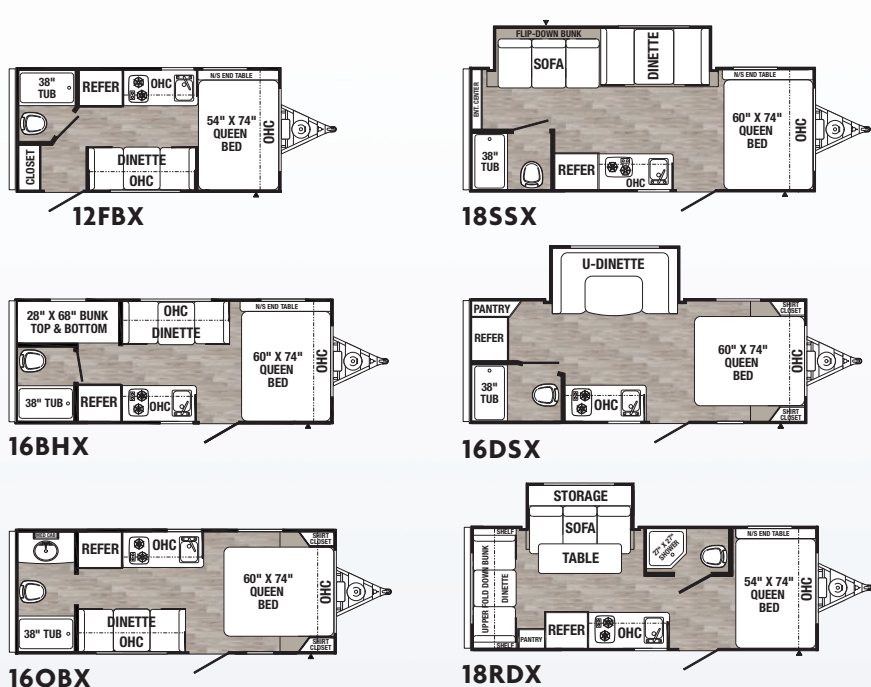


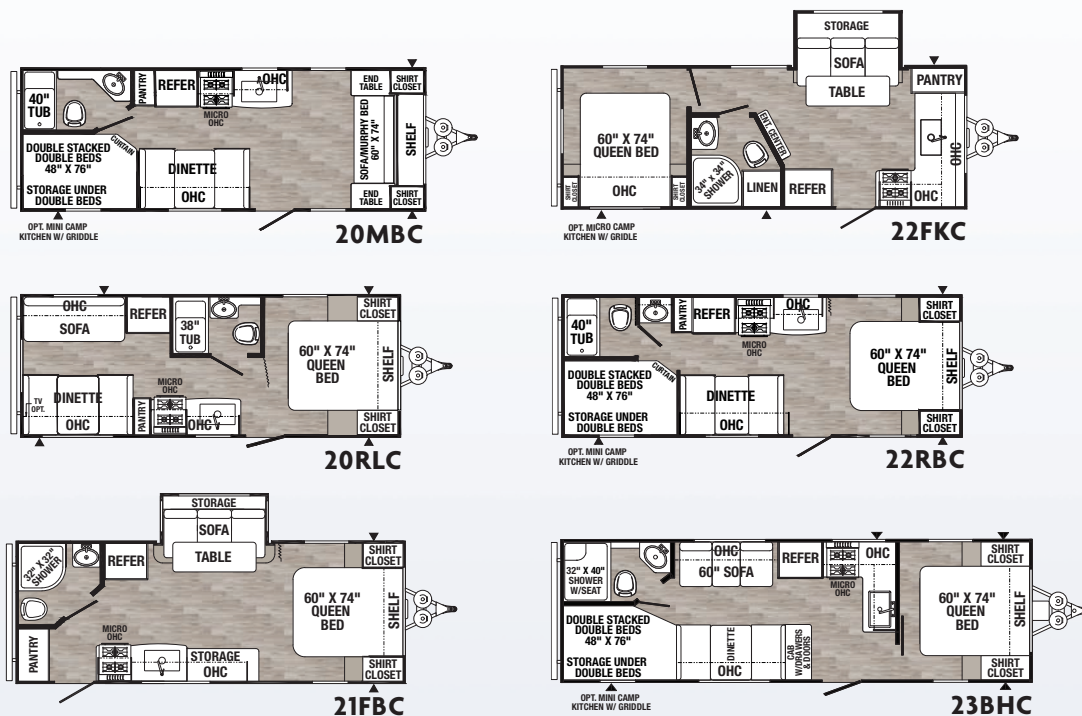
PUMA ULTRA & XLE LITE

BY PALOMINO – SINCE 1968



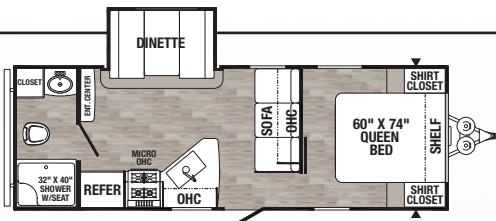


| MODEL | 12FBX | 16BHX | 16QBX | 18SSX | 16DSX | 18RDX | 187TH |
|------------------------|--------|--------|--------|--------|--------|--------|--------|
| Hitch Weight (lbs) | 410 | 370 | 380 | 425 | 415 | 455 | 535 |
| Axle Weight (lbs) | 2400 | 2745 | 2715 | 3620 | 3270 | 3315 | 2965 |
| UVW (lbs) | 2839 | 3144 | 3124 | 4074 | 3714 | 3799 | 3529 |
| GVRW (lbs) | 3910 | 3870 | 3880 | 4825 | 4815 | 4855 | 4935 |
| Cargo Capacity (lbs) | 1070 | 725 | 755 | 750 | 1100 | 1055 | 1406 |
| Exterior Length | 18' 4" | 21' 4" | 21' 4" | 22' 7" | 22' 4" | 23' | 22' 7" |
| Exterior Height w/AC | 9' 11" | 9' 11" | 9' 11" | 10' 1" | 10' 1" | 10' 1" | 10' 1" |
| Exterior Width | 84" | 84" | 84" | 84" | 84" | 84" | 84" |
| Fresh Water Cap. (gal) | 34 | 34 | 34 | 34 | 34 | 34 | 34 |
| Black Water Cap. (gal) | 30 | 30 | 30 | 30 | 30 | 30 | 30 |
| Grey Water Cap. (gal) | 30 | 30 | 30 | 30 | 30 | 30 | 30 |
| Tire Size (in) | 14" | 14" | 14" | 15" | 15" | 15" | 15" |
| Awning Size (ft) OPT. | 10' | 12' | 13' | 14' | 14' | 14' | 14' |

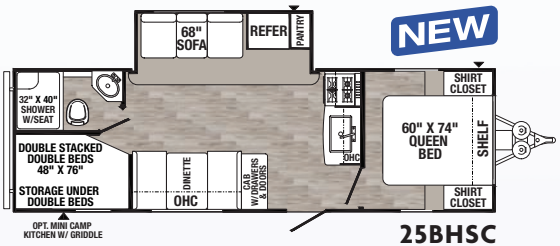


| MODEL | 20MBC | 20RLC | 21FBC | 22FKC | 22RBC | 23BHC | 24FBSC | 25BHSC |
|------------------------|---------|--------|--------|---------|---------|---------|--------|--------|
| Hitch Weight (lbs) | 450 | 380 | 460 | 700 | 435 | 600 | 556 | TBD |
| Axle Weight (lbs) | 3970 | 3956 | 4092 | 4715 | 3770 | 4470 | 4252 | TBD |
| UVW (lbs) | 4458 | 4124 | 4590 | 5453 | 4243 | 5108 | 4808 | TBD |
| GVWR (lbs) | 6000 | 6000 | 6200 | 6953 | 5800 | 6608 | 6500 | TBD |
| Cargo Capacity (lbs) | 1542 | 1876 | 1610 | 1500 | 1557 | 1500 | 1654 | TBD |
| Exterior Length | 25' 10" | 24' 8" | 25' 3" | 25' 10" | 25' 10" | 29' 11" | 27' 4" | 30' 4" |
| Exterior Height w/AC | 10' 2" | 10' 2" | 10' 2" | 10' 2" | 10' 2" | 10' 2" | 10' 2" | 10' 2" |
| Exterior Width | 96" | 96" | 96" | 96" | 96" | 96" | 96" | 96" |
| Fresh Water Cap. (gal) | 43 | 43 | 43 | 43 | 43 | 43 | 43 | 43 |
| Black Water Cap. (gal) | 34.5 | 34.5 | 34.5 | 30 | 34.5 | 34.5 | 34.5 | 34.5 |
| Grey Water Cap. (gal) | 34.5 | 30 | 34.5 | 64.5 | 34.5 | 69 | 34.5 | 34.5 |
| Tire Size (in) | 14" | 14" | 14" | 14" | 14" | 14" | 14" | 14" |
| Awning Size (ft) OPT. | 14' | 10' | 14' | 18' | 10' | 19' | 16' | 20' |

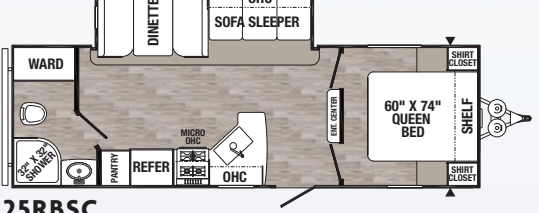
Refer to back cover for chart definitions.



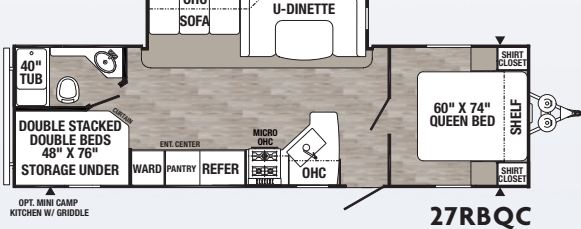
24FBC



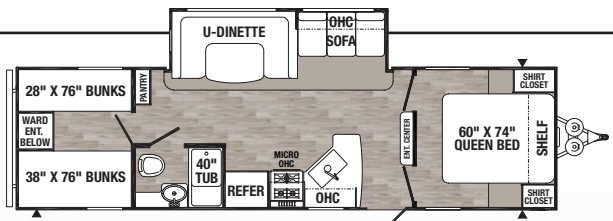
25BHSC



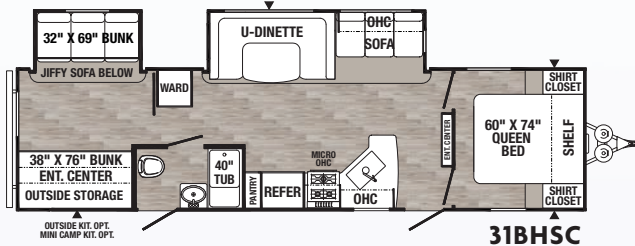
25RBC



27RBQC



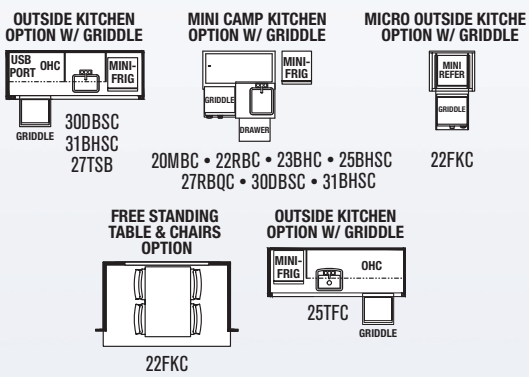
30DBSC



31BHSC

XLE LITE TRAVEL TRAILER OPTIONS

Available on select models.

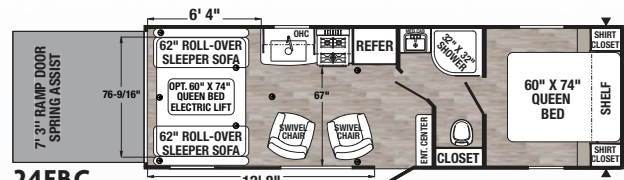


| 25RBC | 27RBQC | 30DBSC | 31BHSC |
|--------|--------|--------|--------|
| 590 | 687 | 754 | 912 |
| 5070 | 5208 | 5546 | 6996 |
| 5698 | 5933 | 6338 | 7946 |
| 7300 | 7687 | 8000 | 9600 |
| 1602 | 1754 | 1662 | 1654 |
| 29' 6" | 33' 0" | 33' 5" | 35' 4" |
| 11' 1" | 11' 1" | 11' 1" | 11' 1" |
| 96" | 96" | 96" | 96" |
| 43 | 43 | 43 | 43 |
| 34.5 | 30 | 34.5 | 30 |
| 30 | 64.5 | 34.5 | 34.5 |
| 15" | 15" | 15" | 15" |
| 18' | 21' | 18' | 21' |

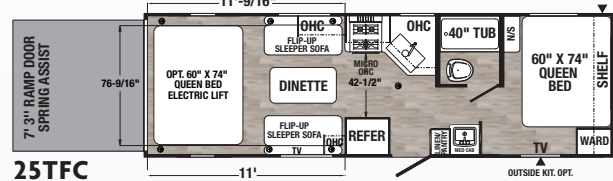
PUMA XLE TOY HAULERS

| MODEL | 24FBC | 25TFC | 27TSB | 27QBC | 29TSS |
|------------------------|-------|-------|--------|--------|--------|
| Hitch Weight (lbs) | 775 | 745 | 1145 | 892 | 1235 |
| Axle Weight (lbs) | 5248 | 5354 | 6085 | 5716 | 6580 |
| UVW (lbs) | 6061 | 6137 | 7268 | 6646 | 7853 |
| GVWR (lbs) | 7775 | 8800 | 9995 | 9200 | 11435 |
| Cargo Capacity (lbs) | 1714 | 2663 | 2727 | 2554 | 3582 |
| Exterior Length | 29'7" | 29'7" | 33' 5" | 33'11" | 37' 4" |
| Exterior Height w/AC | 12'2" | 12'2" | 12'2" | 12'2" | 12'2" |
| Exterior Width | 96" | 96" | 96" | 96" | 96" |
| Fresh Water Cap. (gal) | 43 | 43 | 43 | 43 | 43 |
| Black Water Cap. (gal) | 34.5 | 34.5 | 34.5 | 34.5 | 34.5 |
| Grey Water Cap. (gal) | 34.5 | 34.5 | 34.5 | 34.5 | 34.5 |
| Tire Size (in) | 15" | 15" | 15" | 15" | 15" |
| Awning Size (ft) OPT. | 18' | 14' | 21' | 19' | 21' |

PUMA XLE TOY HAULERS

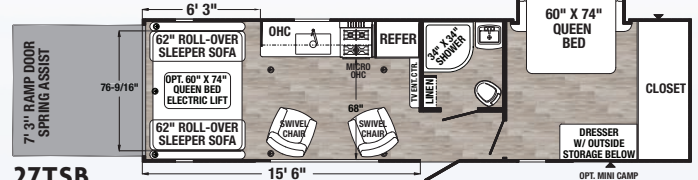


24FBC

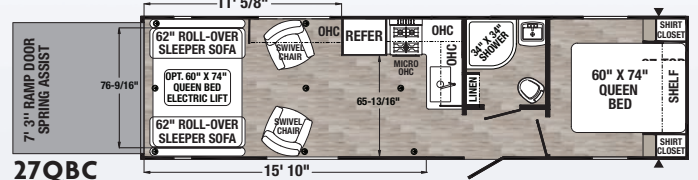


25TFC

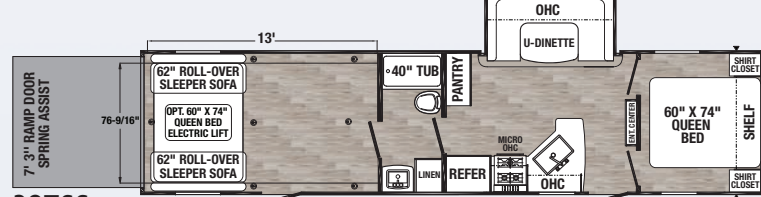
Front queen bed is 60" x 70" with outside kitchen option.



27TSB



27QBC



29TSS

PUMA XLE DECOR OPTIONS

Puma offers two contemporary decor packages.

| CAFE LATTE | SLATE | BEDROOM | FLOORING |
|------------|-------|---------|----------|
| | | | |

PUMA ULTRA LITE PACKAGES

ULTRA LITE PACKAGE (Required)

- Aluminum Solid Double Step
- Outside Shower
- Spare Tire & Carrier
- 13,500 BTU Non-Ducted A/C
- Power Tongue Jack
- AM/FM/CD/DVD Stereo
- 55 Amp Converter
- Front Diamond Plate
- Electric Awning
- Stainless Steel Microwave
- Stainless Range Hood
- 2 Exterior Speakers
- Back-up Camera Prep

ULTRA LEADER PACKAGE (Required)

- 11 Cu. Ft. 12V Residential Refrigerator
- Tub Surround
- Bedspread with Pillows
- Solar Prep
- TV Antenna
- Cable Hook-up
- Tinted Windows
- Night Shades
- Super Lube Axle
- Front & Rear Stabilizer Jacks
- Beauflor Linoleum
- Bath Skylight
- 6 Gal Gas/Electric DSI Water Heater
- LED Lighting
- TV Hook-up
- WiFi Prep

PUMA ULTRA LITE STANDARD FEATURES

EXTERIOR

- Friction Hinged Radius Entry Doors
- Smooth, Radius Front Metal with Diamond Plate
- Large Front Frameless Window (Most models)
- Powder Coated Frames
- Super Lube Axles
- Tinted Safety Glass
- Clamp Ring Windows
- Pass-Thru Storage (Where applicable)
- Alpha Superflex Roof (18 Year manufacturer's limited warranty)
- Rain Gutters with Large Down Spouts
- Radius Baggage Doors
- Darco Wrapped Underbelly
- 5/8" Araucopy Plywood Floor Decking (25 Year manufacturer's limited warranty)
- 2" x 2" Flush Floor Joists on 12" Centers
- 1-30 Lb. Gas Bottle
- Schwintek Slide System with Manual Override (Small models)
- Clamp Ring Luggage Doors
- Back-up Camera Prep
- Solar Prep

INTERIOR

- 78" Interior Height
- 20,000 BTU Furnace
- USB Charging Ports
- Decorative Kitchen Backsplash
- Spice Rack (Kitchen)

- Divided Silverware Drawer
- Nickel Finish, Single Control Gooseneck Kitchen Faucet
- Glass Range Cover
- Built-in Knife Rack
- LED Ceiling Lights
- 30 Amp Converter with Battery Charger
- Jack Knife Sofa with Pull-down Center Drink Tray - Storage Underneath*
- Wood Medicine Cabinet with Mirrored Door*
- Power Vent in Bath
- 27" x 27" Radius Shower w/Door*
- 24" x 40" Tub/Shower*
- 12V Shower LED Light
- 60" x 74" Queen Beds (Most models)
- Upgraded Soft Teddy Bear Bunk Mats
- Shirt Closet in Front Bedrooms*
- Two Interior Decors
- Contemporary Hardware, Light & Bath Fixtures
- Dinette Seat Bases with Storage
- Residential Carpet with Pad
- Designer Window Treatments (Living room)

SAFETY FEATURES

- CO2 Detector
- LP Leak Detector
- Fire Extinguisher
- Smoke Detector

*Available on select models.

YOUR **PUMA** ULTRA LITE & XLE LITE DEALER

PUMA XLE LITE PACKAGES

VALUE LEADER PACKAGE (Required)

- Tub Surround
- Bedspread with Pillows
- TV Antenna with Cable Hook-up
- Tinted Windows
- Super Lube Axles
- Front & Rear Stabilizer Jacks
- Beauflor Linoleum
- Bath Skylight
- LED Lighting
- Bedroom TV Hook-up
- WiFi Prep
- Solar Prep

ELITE PACKAGE (Required)

- Electric Awning
- Oven & Range Hood
- Stainless Steel Microwave
- AM/FM/CD/DVD Stereo
- 2 Exterior Speakers
- Outside Shower
- Spare Tire
- Front Diamond Plate
- 13,500 BTU Ducted A/C
- 6 Gal Gas/Electric Water Heater
- Night Shades
- Aluminum Solid Steps
- 11 Cu. Ft. Residential Refrigerator

ELECTRIC POWER PACKAGE (Optional)

- 4 Electric Stabilizer Jacks • 3500 lb Electric Tongue Jack

PUMA XLE LITE STANDARD FEATURES

EXTERIOR

- Friction Hinged Radius Entry Doors
- Smooth, Radius Front Metal with Diamond Plate
- Large Front Frameless Window (Most models)
- Powder Coated Frames
- Super Lube Axles
- Tinted Safety Glass
- Clamp Ring Windows
- Pass-Thru Storage (Where applicable)
- Alpha Superflex Roof (18 Year Manufacturer's Limited Warranty)
- Rain Gutters with Large Drop Spouts
- ABS Automotive Style Fender Skirts
- Radius Baggage Doors
- Darco Wrapped Underbelly
- 5/8" Araucopy Plywood Floor Decking (25 Year manufacturer's limited warranty)
- 2" x 3" Flush Floor Joists on 12" Centers
- 2-20 Lb. Gas Bottles
- Rack & Pinion Electric Slide System with Manual Override (Large models)
- Schwintek Slide System with Manual Override (Small models)
- Clamp Ring Luggage Doors
- Back-up Camera Prep
- Solar Prep

INTERIOR

- 80" Interior Height (Large models)
- 78" Interior Height (Small models)
- USB Charging Ports
- Floor Ducted Heat (Most models)
- Decorative Kitchen Backsplash

- Spice Rack (Kitchen)
- Divided Silverware Drawer
- Nickel Finish, Single Control Gooseneck Kitchen Faucet
- Undermount Stainless Steel Sink
- Glass Range Cover
- Built-in Knife Rack
- LED Ceiling Lights
- 55 Amp Converter with Battery Charger
- Jack Knife Sofa with Pull-down Center Drink Tray - Storage Underneath (Most models)
- Wood Medicine Cabinet with Mirrored Door
- Power Vent in Bath
- Glass Shower Door*
- 12V Shower LED Light
- 60" x 74" Queen Beds
- Upgraded Soft Teddy Bear Bunk Mats
- Two Interior Decors
- Satin Nickel Hardware, Light & Bath Fixtures
- Square Dinette Seat Bases with Storage
- Residential Carpet with Pad
- Designer Window Treatments (Living room)

SAFETY FEATURES

- CO2 Detector
- LP Leak Detector
- Fire Extinguisher
- Smoke Detector

*Available on select models.

PUMA
XLE LITE

Puma XLE Lite by Palomino,
a Division of Forest River, Inc.
2551 Century Drive
Goshen, IN 46528
www.palominorv.com



PRE-DELIVERY INSPECTION FACILITY

20,000 square feet of quality assurance. The bare essentials for a premium product. This state-of-the-art facility gives immediate daily feedback to production for quality assurance in every unit built.

24/7 EMERGENCY ROADSIDE ASSISTANCE WITH VEHICLE PURCHASE*

TOWING
JUMP-STARTS
TIRE CHANGES
FLUID DELIVERY
LOCKOUT
SERVICE

WINCH-OUT
MOBILE MECHANIC
TECHNICAL
SUPPORT
DEALER LOCATOR
SERVICES

*VALID FOR 1 YEAR FROM DATE OF PURCHASE

WWW.KOACARECAMPS.ORG

+

Fighting Cancer + Making Memories

FREE MEMBERSHIP
to Forest River Owners' Group

www.forestriverfrog.com

CUSTOMER SATISFACTION

BUY LOCAL

PROUDLY MANUFACTURED

www.ForestRiverBuyLocal.com

Find us on
Facebook

Learn More

Scan this barcode using a QR Reader on your smart phone to learn more about Forest River.

A Berkshire Hathaway company.

GVWR (Gross Vehicle Weight Rating) - is the maximum permissible weight of the unit when fully loaded. It includes all weights, inclusive of all fluids, cargo, optional equipment and accessories. For safety and product performance do NOT exceed the GVWR.

GAWR (Gross Axle Weight Rating) - is the maximum permissible weight, including cargo, fluids, optional equipment and accessories that can be safely supported by a combination of all axles.

UVW (Unloaded Vehicle Weight)* - is the typical weight of the unit as manufactured at the factory. It includes all weight at the unit's axle(s) and tongue or pin and LP Gas. The UVW does not include cargo, fresh potable water, additional optional equipment or dealer installed accessories.

*Estimated Average based on standard build optional equipment.

CCC (Cargo Carrying Capacity)** - is the amount of weight available for fresh potable water, cargo, additional optional equipment and accessories. CCC is equal to GVWR minus UVW. Available CCC should accommodate fresh potable water (8.3 lbs per gallon). Before filling the fresh water tank, empty the black and gray tanks to provide for more cargo capacity.

**Estimated average based on standard build optional equipment.

Each Forest River RV is weighed at the manufacturing facility prior to shipping. A label identifying the unloaded vehicle weight of the actual unit and the cargo carrying capacity is applied to every Forest River RV prior to leaving our facilities. The load capacity of your unit is designated by weight, not by volume, so you cannot necessarily use all available space when loading your unit. All information contained in this brochure is believed to be accurate at the time of publication. However, during the model year, it may be necessary to make revisions and Forest River, Inc. reserves the right to make all such changes without notice, including prices, colors, materials, equipment and specifications as well as the addition of new models and the discontinuance of models shown in this brochure. Therefore, please consult with your Forest River dealer and confirm the existence of any materials, design or specifications that are material to your purchase decision. ©2020 Puma by Palomino a Division of Forest River, Inc., a Berkshire Hathaway company. All Rights Reserved. 9/20