

ULTRA-LITE TRAILERS &  
FIFTH WHEELS

DEDICATED TO QUALITY,  
INNOVATION AND  
VALUE.



FAMILY OWNED SINCE 1983

**Ameri-*Life***  
BY GULF STREAM®  
**Ultra-Lite**





The luxuriously appointed Ameri-Lite line of Ultra-lightweight trailers and fifth wheels are sure to provide your family with vacation and weekend memories that will last for a lifetime!



**MODEL 27BH • PEBBLE TAN**



**MODEL 23BW • RUSTIC BURGUNDY**



**KITCHEN • RUSTIC BURGUNDY**

Ameri-Lite towables feature hand-crafted hardwood cabinet doors, a full kitchen complete with range and microwave, a dinette area with plenty of room, a bath and bedroom with loads of storage space.

The Ameri-Lite by Gulf Stream Coach, Inc. offers your family all the benefits of RV living... for LESS... both dollars and pounds! Voted a Top 10 RV by RV Trade Digest magazine.



**COMFORTABLE AND STYLISH SOFA BED**

**BUILT IN LINEN STORAGE BOX**



**EASY ACCESS STORAGE! AZURE BLUE**



Lockable exterior storage compartments featuring insulated doors and more than ample space to accommodate your travel needs.

Diamond plate road guard protects and enhances the exterior look.







*MODEL 24RK • AZURE BLUE*

For that home-away from home feel, nothing beats the Ameri-Life for spaciousness and livability!

Choose the floorplan that fits your families needs, pick your favorite decor from our professionally designed interior decor packages and start enjoying quality time with your family in your new AmeriLife by Gulf Stream Coach.

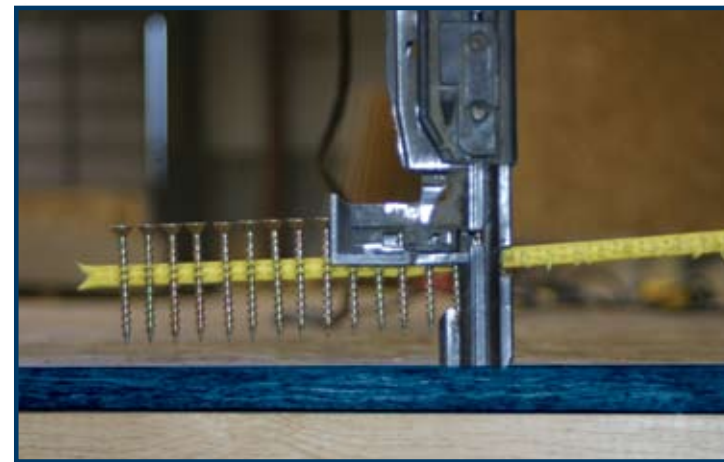


FAMILY OWNED SINCE 1983





Gulf Stream constructs each coach using only the finest quality materials. The Ameri-Lite's 5/8" floor decking is both glued and screwed to the sturdy 2x3 floor joists which are 13" on center and fully insulated. Then the floor assembly is bolted to the steel frame, providing one of the strongest floor systems on the market!



To help maximize quality, Gulf Stream Coach, Inc., is located in Nappanee, Indiana... the heart of Amish country. To workers here, craftsmanship and pride in their work is a way of life.



Sidewall construction at Gulf Stream has several unique benefits:

1. Sidewalls are always set on top of the floor and screwed down for maximum strength.
2. Steel bands connect the walls to the floor.
3. Insulation is hand cut and glued into place. Unlike a blanket, this offers higher R-values and won't creep down.

All Ameri-Lites go through several rigid inspections that include water, gas, electrical, structural and of course cosmetic aspects of your new RV.

All of this to make each trip the best that it can be!

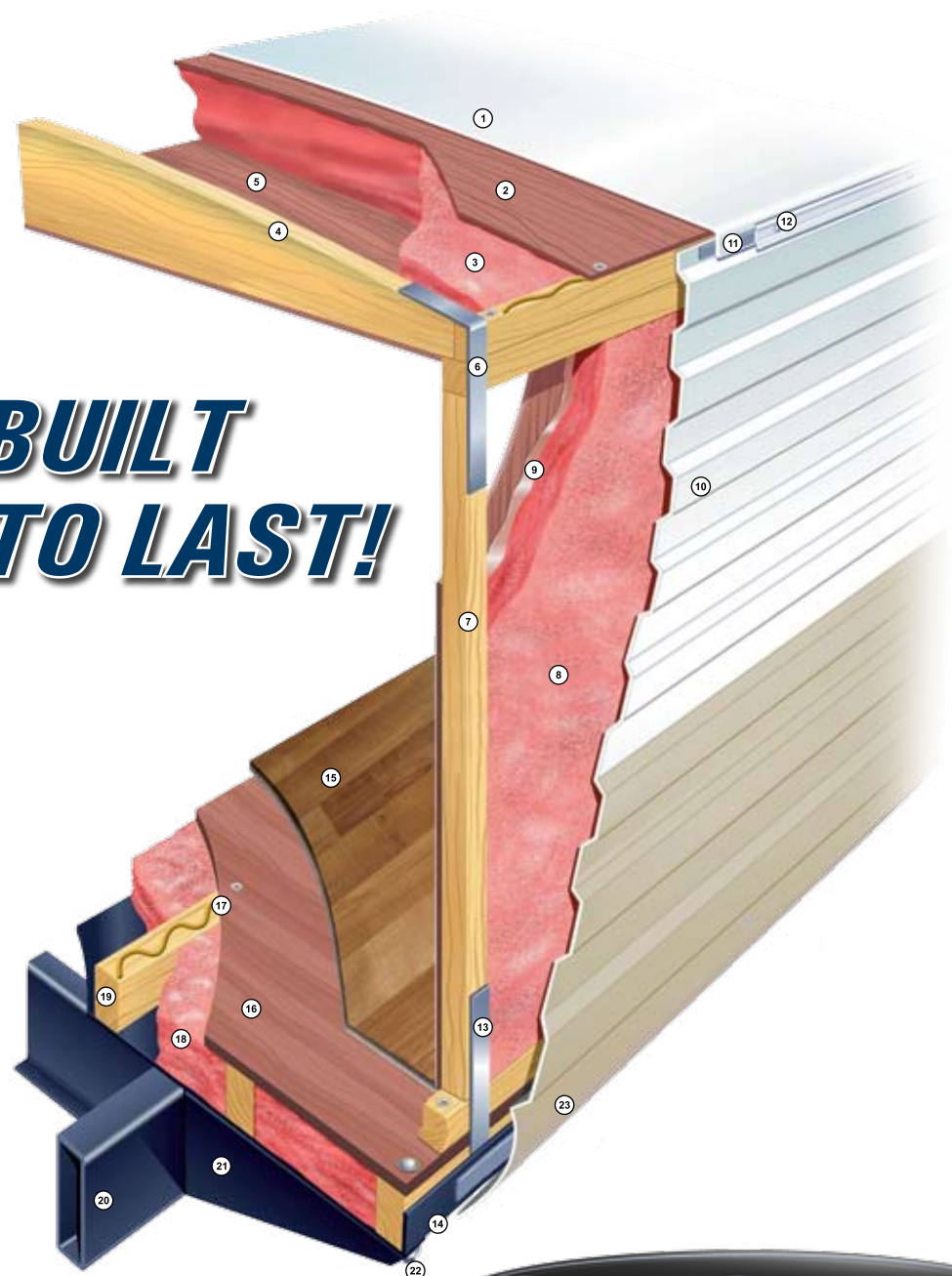


# Quality Constructed Travel Trailers & Fifth Wheels

## ***SUPERIOR CONSTRUCTION***

1. One-Piece, Seamless Roof with 12 Year Warranty
2. Strong Wood Roof Decking, Glued and Screwed
3. Thick Blanket of Fiberglass Insulation
4. Solid Roof Rafter
5. Interior Ceiling Board
6. Galvanized Steel Straps - Used to Increase the Roof-to-Sidewall Transition Strength and Solidify our Uni-Body Construction
7. Sturdy Wood Sidewall Construction, 16" On Centers (Walls are always set on the floor, not next to it, for maximum strength, and screwed into place)
8. Thick Blanket of Fiberglass Insulation, Hand-Cut and Fit for Long Lasting Energy Efficiency
9. Glue Used to Bond Hand Cut Insulation to Interior Wall Board - To Eliminate Possible Slipping or Movement
10. Exterior Aluminum Siding with Baked Enamel Finish
11. Butyl Caulking for Superior Seal & Less Black Streaks
12. Drip Rail/Awning Rail, Screwed to Roof Framing - Helps Keep Unit Clean
13. Galvanized Steel Straps - Used to Increase the Sidewall-to-Floor Transition Strength and Solidify our Uni-Body Construction
14. Tough Poly Max Underbelly Wrapped Up Sides and Ends, Protects Against Moisture and Road Debris
15. Durable Residential-Style Heavy Gauge Linoleum Floor Covering
16. 5/8" Floor Decking Screwed and Glued
17. Floor Decking Glued and Screwed to Floor Joists
18. Thick Blanket of Fiberglass Insulation
19. Sturdy Wood Floor Joist System, 13" or Less O.C.
20. Tubular Steel Frame
21. Full Width Steel Outriggers - Superior Strength & Support
22. Steel Bolts Secure Floor To Steel Outriggers
23. Heavy Gauge Radius Lower Model

***BUILT  
TO LAST!***



FAMILY OWNED SINCE 1983



## CHECK OUT JUST SOME OF AMERI-LITE'S MANY STANDARDS...

- One Piece Roof (12 Yr. Warranty)
- Abundant Outside Storage
- Stabilizer Jacks & Electric Brakes
- 16M BTU Furnace with Electric Ignition
- Tubular Steel, Cambered Frame
- Floor Joists - 13" on Center
- 5/8" Floor Decking screwed and glued
- Wall Studs every 16" or less on Center
- Tapered Roof Rafter
- Fiberglass Insulation, hand cut and glued
- 6 Gal. Gas Water Heater
- Oak Framed, Mortise & Tenon Cabinet Doors
- Mini Blinds Throughout
- 3-Burner Range Top
- Flush Mount Refrigerator
- Easy Store Sofa/Bed (most models)
- System Monitor Panel
- Designer Window Treatment
- Bed Lifts for Easy Access
- 45 Amp. Power Converter

## LE PACKAGE

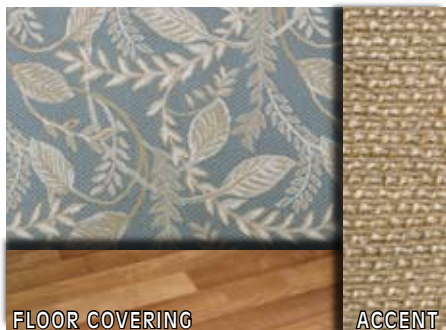
- Roof Air Conditioner
- Roll Out Awning
- Microwave Oven
- TV Antenna
- Stabilizer Jacks

(17, 21MB, 23BW, 24BH, 25BH Only)

## DELUXE PACKAGE

- Roof Air Conditioner
- Roll Out Awning
- Microwave Oven
- TV Antenna
- Stabilizer Jacks
- Spare Tire
- AM/FM CD Stereo
- 3 Burner Cooktop with Oven
- Outside Shower
- Extra Cabinet

### AZURE BLUE



### PEBBLE TAN



### RUSTIC BURGUNDY

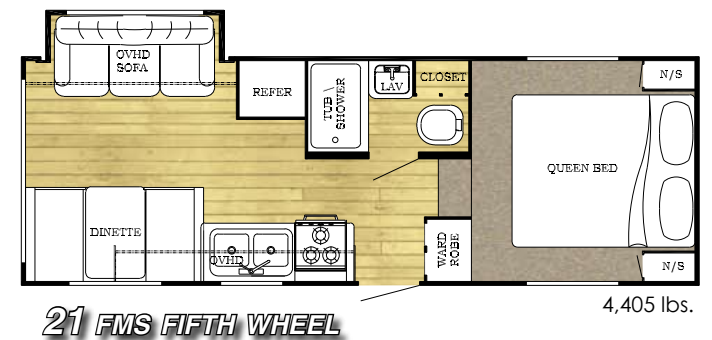
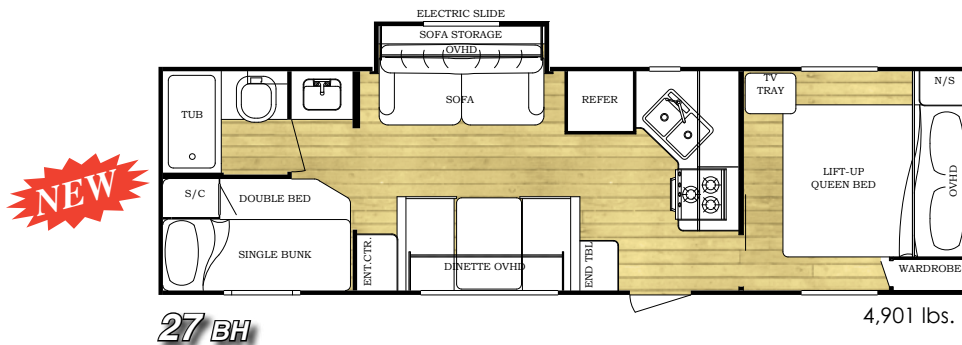
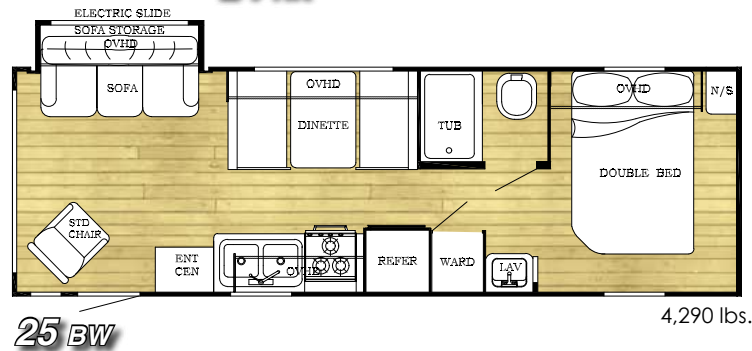
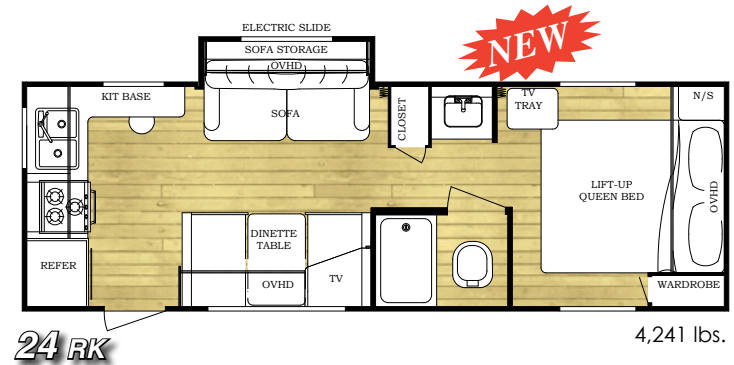
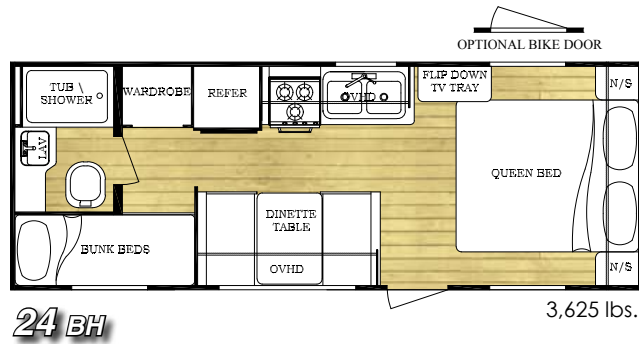
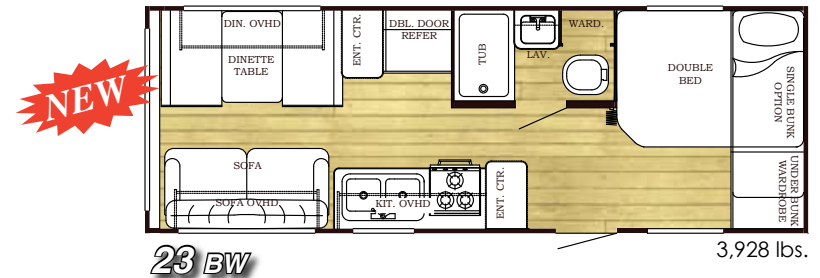
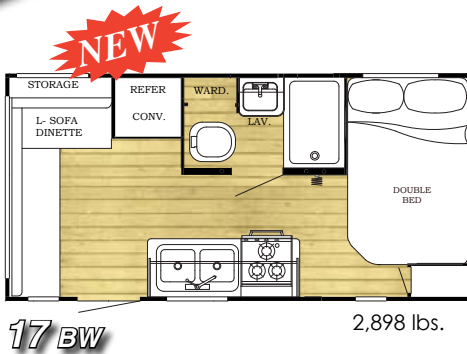


## TRAVEL TRAILERS

MODEL NAME	17 BW	21 MB	23 BW	24 BH	24 RK	25 BH	25 BW	27 BH	21 FMS
Overall Length Apx.	19'-7"	21'-9"	25'-11"	24'-9"	27'-3"	27'-3"	27'-7"	29'-11"	23'-10"
Overall Width Apx.	90"	90"	90"	90"	90"	90"	90"	90"	90"
Exterior Height*	114"	114"	114"	114"	116"	116"	116"	116"	116"
Interior Height	6'-4"	6'-4"	6'-4"	6'-4"	6'-4"	6'-4"	6'-4"	6'-4"	6'-4"
Net Carrying Capacity	1,002	1,125	2,742	2,295	2,949	3,500	3,370	2,759	3,235
Hitch Weight	400	340	670	430	490	440	660	660	640
Dry Weight	2,898	3,215	3,928	3,625	4,241	3,940	4,290	4,901	4,405
Fresh Water Capacity	54 Gal.	30 Gal.	30 Gal.	30 Gal.	30 Gal.	30 Gal.	30 Gal.	30 Gal.	30 Gal.
Waste Water Capacity	74 Gal.	74 Gal.	74 Gal.	74 Gal.	74 Gal.	74 Gal.	74 Gal.	74 Gal.	74 Gal.
# of Axles	1	2	2	2	2	2	2	2	2
Tire Size	14"	13"	13"	13"	14"	14"	14"	14"	14"

All Weights Shown are in Dry Condition, without options or fluids. Please add for additional options and features. Consult the weight tag inside kitchen cabinet and your tow vehicle owners manual for more information.

\* With Roof Air Conditioner





**A FULL-LINE RV  
MANUFACTURER**



**FAMILY OWNED SINCE 1983**



**GULF STREAM COACH  
EXCEPTIONAL VALUE...**

Gulf Stream has been awarded the prestigious Platinum Recreational Vehicle Manufacturer Quality & Productivity Award in recognition of our commitment to producing quality recreational vehicles.

Your family and friends will feel safe and comfortable in a Gulf Stream travel trailer or fifth wheel. Compare... and you will see the exceptional value of Gulf Stream travel trailers & fifth wheels.

POST OFFICE BOX 1005 NAPPANEE, IN 46550  
• YOUR GULF STREAM COACH DEALER •



**GULF STREAM FACILITIES...**

Family owned for 25 years and located in the heart of the Amish country, the complex covers over 200 acres and includes more than 1.5 million square feet of state-of-the-art manufacturing facilities.

Gulf Stream employs over 1400 men and women who are continuously trained on quality initiatives fostering the most creative and innovative culture in the RV industry.

With 25 years of manufacturing experience producing quality Recreational Vehicles, Gulf Stream is a leading manufacturer of high quality and high value RV products that are distributed through a partnership relation of independent dealers who are focused on exceeding customer expectations.

**FEATURING A 2-YEAR WARRANTY!**

In addition to our standard one year warranty, Gulf Stream Coach, Inc., offers an exclusive 24 month warranty on structural components. In addition, major component manufacturers are providing 24 month warranties on their products installed in Gulf Stream units such as refrigerators, antenna, furnace, water heater, air conditioner, awning, range, microwave and more. See the official written Gulf Stream Coach, Inc., Warranty for details.

\*for purposes of this warranty, "structural components" shall be limited to the structure of the side walls, front and back walls, roof and floor.



**VISIT**

**WWW.GULFSTREAMRV.COM**

**FOR MORE DETAILED INFORMATION...  
OR CALL 1-800-765-8787-EXT. 3288**

For more information and available options, contact your local Gulf Stream dealer, [www.gulfstreamrv.com](http://www.gulfstreamrv.com) or Gulf Stream Coach, Inc. Gulf Stream Coach, Inc., reserves the right to make changes in prices, colors, materials, components and specifications and to discontinue models at any time without notice or obligation. Gulf Stream Coach, Inc., assumes no responsibility for any error in type or print reproduction of specifications or floorplans in this brochure. Photographs may show equipment or items that are optional and are not included in the purchase price of the coach. Test drive and review a current model at your nearest Gulf Stream dealer. © 2002 Gulf Stream Coach, Inc., Nappanee, Indiana U.S.A.

10/07-SP-70k