

Jayco | 2025 Seismic Fifth Wheel



# 2025 SEISMIC

ADVENTURE IN LUXURY

**2+3**  
YEAR | YEAR  
WARRANTY





VINTAGE FARMHOUSE



Main Wood



Accent Wood



Floor



Countertop



Main Fabric



Accent Fabric

## OPTIONS

A



Queen Bed

B



Half Bath

C



Super Sofa



MICRO

OHC

FRIDGE

WARD

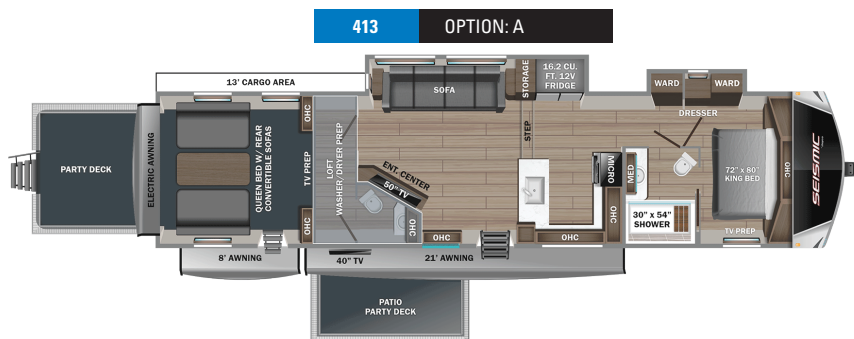
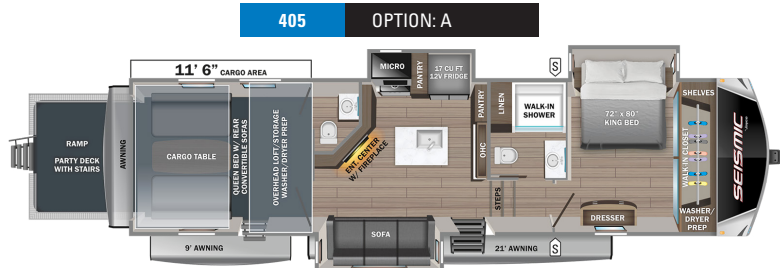
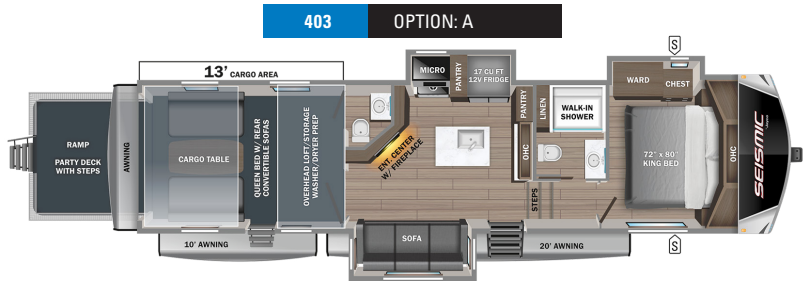
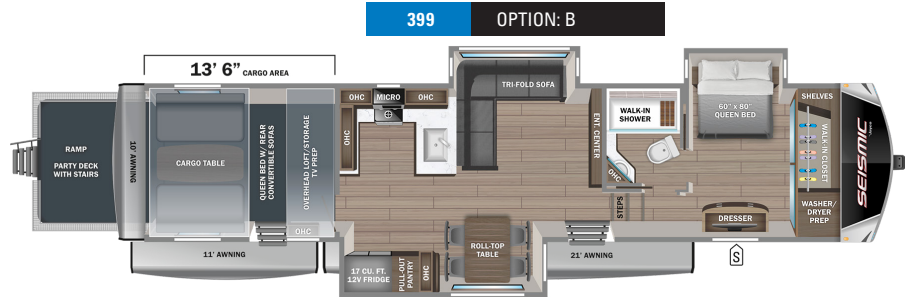
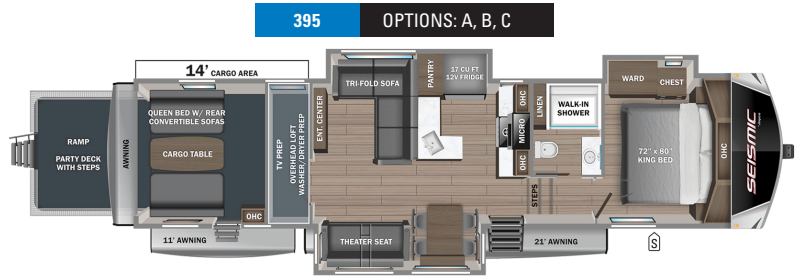
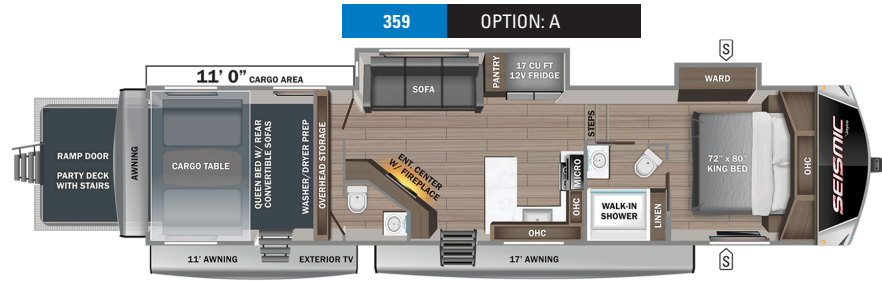
STORAGE

MICROWAVE

OVERHEAD CABINETS

REFRIGERATOR

WARDROBE



# STANDARDS & OPTIONS

## EXTERIOR

102 in. wide body structural steel I-beam construction  
 NPS - Powered by Yamaha 6,000 watt generator with built in pure sign inverter, gas/C.A.R.B certified  
 6-point hydraulic auto-leveling system  
 Battery disconnect switch  
 Climate Shield™ zero-degree tested weather protection:  
 PEX plumbing  
 35,000 BTU output furnace  
 Double layer fiberglass batt insulation in ceiling and floor  
 Double sided radiant barrier insulation (roof and floor)  
 Fully enclosed and heated underbelly (ducted)  
 Custom automotive-grade vinyl exterior graphics package  
 Detachable shore power cord  
 Digital TV antenna  
 Dual 30 lb. propane bottles with auto regulator  
 Exterior marine-grade speakers  
 Folding roof ladder  
 Fully enclosed, LED-lighted universal docking center:  
 Black tank flush, winterization and sanitation  
 Quick-connect outside shower  
 Satellite prep  
 HELIX Cooling System™ (industry exclusive):  
 Directional and closeable A/C vents  
 Jayco-exclusive insulated dual duct design  
 Two exterior-mounted 15,000 BTU ducted A/Cs (living room and bedroom)  
 JaySMART™ (Safety Markers And Reverse Travel) LED lighting (patented)  
 LED exterior lighting package  
 LP quick-connect  
 Magnum Truss™ Roof System (strongest tested roof in the industry) with Alpha roof membrane system with limited lifetime warranty  
 Painted fiberglass front cap with clear coat and built-in specialty LED lighting  
 Pass-through storage with Slam-latch™ baggage doors  
 Stronghold VBL™ aluminum framed and vacuum bond laminated gel coated fiberglass exterior walls and slide room end walls  
 Under-mounted spare tire  
 Water heater bypass

## INTERIOR

12V charging station  
 5/8 in. tongue-and-groove joined plywood main floor decking and 3/8 in. tongue-and-groove plywood in the roof  
 Bathroom skylight  
 Carbon monoxide and LP detector  
 Central command center with built-in tank monitoring  
 Custom interior design - Vintage Farmhouse  
 Gas-strutted under-bed storage  
 Handcrafted and glazed doors, drawers and trim  
 Hardwood safety handrail on hallway steps  
 Heavy-duty, 75 lb., full-extension, steel ball-bearing drawer guides  
 Inverter pre-wire  
 LED fireplace with electric space heater (select models)  
 LED interior lighting throughout  
 No in floor heat registers throughout the coach  
 Porcelain foot flush toilet  
 Residential "Do it all" sink with pull-out kitchen faucet, glass rinse and vegetable rinse  
 Residential finished dove tail jointed drawers throughout  
 Residential NuVo H2O whole coach water treatment system with water softening and triple cartridge filters  
 Residential quilted bedspread  
 Residential vinyl flooring (made in the USA)  
 Solid hardwood cabinet doors  
 Stain protected fabric on all furniture  
 SuperSofa with heat, massage and LED lighting (select models)  
 Vinyl flooring in slideouts (no carpet)  
 Washer/dryer prep

## RAMP AND CARGO EQUIPMENT

30 gal. fuel tank with timer  
 Garage D-rings mounted to steel frame  
 HappiJac® electric-lift queen beds/convertible sofas with folding armrests and cup holders  
 LED high-intensity ramp lights  
 Ram air vents and power roof vent  
 Ramp patio kit with exterior steps  
 Rear electric patio awning  
 Rear ramp door and patio with anti-slip, non-skid flooring  
 Three seasons removable garage wall/doors  
 Tuff-ply, rubberized garage floor liner

## CUSTOMER VALUE PACKAGE (MANDATORY)

16 gal. gas/electric DSI water heater  
 17 cu. ft. 12V refrigerator  
 2nd electric awning  
 30" Space saver microwave  
 4K Smart LED HDTV with fully digital HDMI® output  
 50-amp service and 3rd A/C prep  
 AM/FM/CD/DVD/Bluetooth® stereo with 4 speakers  
 Bathroom power vent  
 Custom machined aluminum rims  
 Electric awning with RGB LED lights and remote control  
 Hidden hinges and magnet door catches on cabinet doors  
 Keyed-Alike™ lock system  
 MORyde® strut-assisted fold-away entrance steps (main entrance)  
 Night shades  
 Residential 21" oven with three burners  
 Residential king (72 in. x 80 in.) mattress with under bed-storage  
 Rooftop and ground solar prep

## 4-STAR HANDLING PACKAGE (MANDATORY)

17.5 in. 16 ply 'H' rated Uniroyal tires  
 Dexter® Axles with ABS and Tow Assist - includes Nev-R-Adjust® brakes and E-Z Lube® hubs  
 Rota-flex king pin  
 Wet bolt fasteners, bronze bushings and 4,000 lb. leaf springs

## OPTIONS

Frameless dual-pane tinted safety-glass windows  
 Outside Halo griddle for outside kitchens or JayPort system (includes LP quick-connect) (select models)  
 Overlander 2 Solar Package: 30-amp solar controller with (2) roof-mounted 200W solar panels and a 1800W inverter  
 Overlander 4 Solar Package: (4) 200W solar panels, (2) 100-amp/hour lithium heated batteries, 60-amp controller, 3000W inverter, DC/DC power converter, soft start power save main 15K A/C, soft start power save for bedroom 15K A/C, battery monitor, energy management system, roof pre-wire for additional solar panels, generator prep capable and heavy gauge steel battery enclosure  
 Queen residential foam-top mattress

\*Indicates split tanks

FLOORPLAN	TOTAL EXTERIOR LENGTH	EXTERIOR WIDTH	EXTERIOR HEIGHT (WITH A/C)	INTERIOR HEIGHT (MAIN)	INTERIOR HEIGHT (UPPER DECK)	UNLOADED VEHICLE WEIGHT	DRY HITCH WEIGHT	GVWR	CARGO CARRYING CAPACITY	FRESH WATER CAPACITY (INCLUDING WATER HEATER)	GRAY WASTE WATER CAPACITY	BLACK WASTE WATER CAPACITY	SLEEPING CAPACITY
359	41' 9"	8' 6"	13' 3"	8' 3"	6' 4"	13,405	2,990	17,500	4,095	106	87*	87*	4-6
395	45' 8"	8' 6"	13' 3"	8' 3"	6' 4"	15,210	3,430	20,400	5,190	106	87*	87*	4-6
399	45' 11"	8' 6"	13' 2"	8' 3"	6' 4"	14,950	3,370	20,400	5,450	106	87*	87*	6-8
403	TBD	TBD	TBD	TBD	TBD	TBD	TBD	TBD	TBD	TBD	TBD	TBD	TBD
405	41' 6"	8' 6"	13' 3"	8' 3"	6' 4"	13,850	2,940	17,995	4,145	106	87*	87*	4-6
413	TBD	TBD	TBD	TBD	TBD	TBD	TBD	TBD	TBD	TBD	TBD	TBD	TBD

Meet your Jayco Dealer



Scan QR code for specification definitions

Some specs at the time of print may include estimates. For the most updated information, please visit [Jayco.com](http://Jayco.com)

Jayco, Inc. | P.O. Box 460 | Middlebury, IN 46540

See dealer for further information and prices. All information in this brochure and on [www.jayco.com](http://www.jayco.com) is the latest available at the time of publication approval. Jayco reserves the right to make changes and to discontinue models without notice or obligation. Photography may show optional equipment or props used for decoration purposes only. RVs built for sale in Canada may differ to conform to Canadian codes. JAYCO and the JAYCO BIRD IN FLIGHT are registered trademarks of Jayco, Inc. Printed in USA 11/24 ©2024 Jayco, Inc. 2032978



Jayco - Part of Jayco Family of Companies