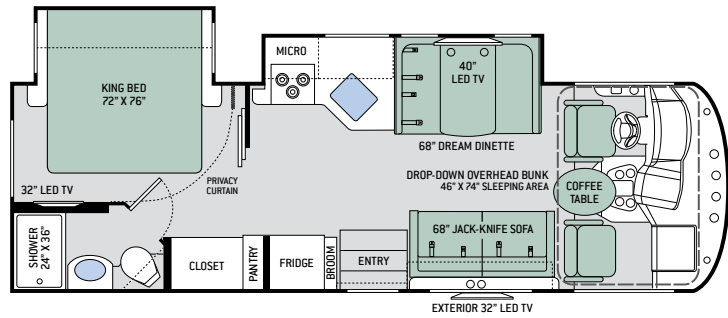




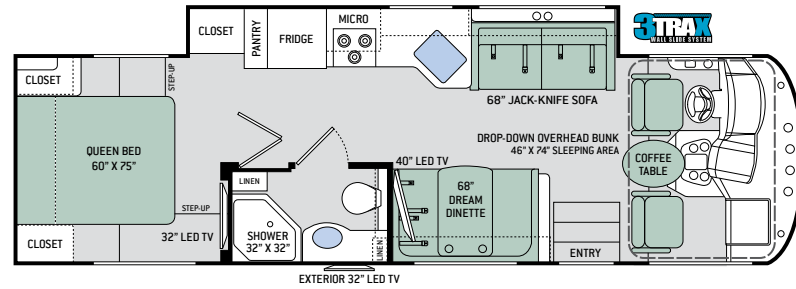
A.C.E.[®]
BY THOR MOTOR COACH

*See why so many people call the A.C.E. home and start
an adventure of your own today!*

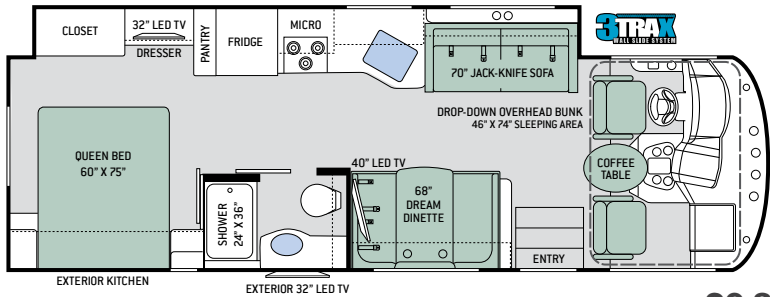
Floor Plans



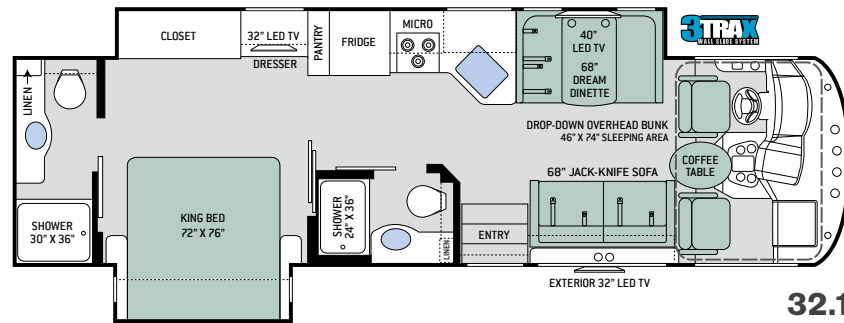
27.2



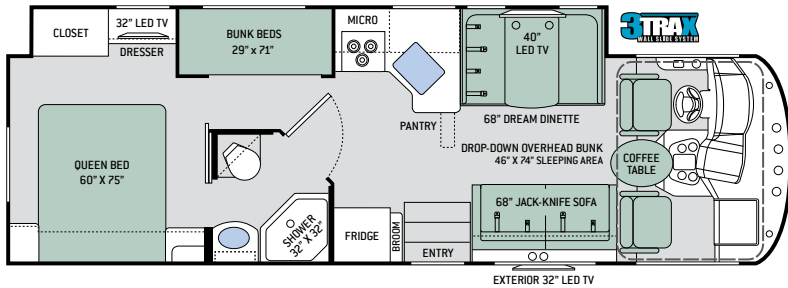
30.4



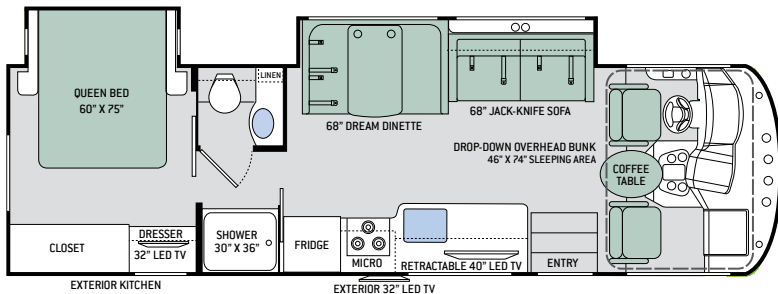
29.3



32.1



30.2



30.3

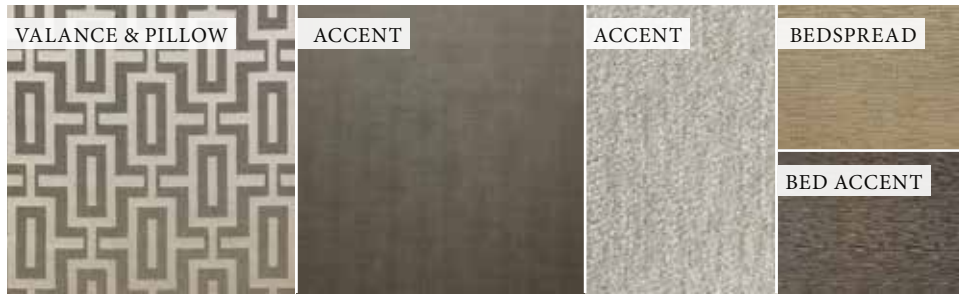
Specifications

	27.2	29.3	30.2	30.3	30.4	32.1
Chassis	Ford	Ford	Ford	Ford	Ford	Ford
Gross Vehicle (GVWR)	16,000	18,000	18,000	18,000	18,000	20,500
Gross Combined (GCWR)	23,000	23,000	23,000	23,000	23,000	26,000
Wheel Base	178"	190"	190"	190"	208"	208"
Exterior Length (w/out ladder)	28'-9"	29'-9"	31'-6"	31'	31'-6"	33'-6"
Exterior Height (w/AC)	12'-2"	12'-2"	12'-2"	12'-2"	12'-2"	12'-2"
Exterior Width (w/out mirrors)	99"	99"	99"	99"	99"	99"
Interior Height	84"	84"	84"	84"	84"	84"
Awning Size	19'	18'	19'	19'	16'	14'
Fuel (gal)	80	80	80	80	80	80
LPG (lbs)	88	88	88	88	88	88
Fresh/Waste/Gray Water (gal)	50 / 40 / 33F-40R	50 / 26 / 47	50 / 28 / 40	50 / 40 / 40	50 / 40 / 47	50 / 67 / 86
Water Heater (gal)	6	6	6	6	6	10
Furnace (BTUs)	30,000	35,000	35,000	35,000	35,000	35,000
Exterior Storage Capacity (cu. ft.)	56	48	107	72	130	83



3TRAX™ is our in-wall slideout system, housing all the moving and mechanical parts within the sidewall of the motorhome. This triple track design supports large rooms, like those found in full-wall slideouts, ensuring simple, reliable, maintenance-free operation. What sets 3TRAX™ apart is the patented rail system, in-floor roller guides and electric motor design. For more information, visit thormotorcoach.com/3TRAX.

Interior Decor



ARCTIC FROST II



LEATHERETTE FURNITURE



ISLAND NIGHTS



COUNTERTOPS



BRAZILIAN CHERRY



MESA MINERAL II



RESIDENTIAL VINYL FLOORING



MALIBU MAPLE

Exterior Graphics



BRANDYWINE 



VINEYARD 



Thinking about buying a new coach? Have a question about one of our motorhomes? Trying to find a dealer near you?

Our Coach Link support team is here to help you in your purchase of a new motorhome! This dynamic team focuses directly on helping you find the answers you need to help get you behind the wheel of one of our great new motorhomes. Call: 800.860.5658 or visit us online: thormotorcoach.com

Features

CONSTRUCTION & EXTERIOR

- Ford® F-53 Chassis - 6.8L Triton® V10 Engine, 320HP, 460 lb.-ft. Torque - TorqShift® 6-Speed Automatic Transmission with Overdrive
- One-Piece Fiberglass Front Cap
- Welded Tubular Steel Floor
- Welded Tubular Aluminum Roof & Sidewall Cage Construction
- Vacu-Bond Laminated Roof, Walls & Floor with Block Foam Insulation
- Premium One-Piece TPO Roof
- HD-MAX® Exterior with Graphics Package
- Automatic Leveling Jacks with Touchpad Controls
- MEGA-Storage™ Compartment (30.4)
- Rotocast Storage Compartments
- Pet-Link™ Multi-Purpose Tie-Down
- Power Patio Awning with Integrated LED Lighting
- 3TRAX® Wall Slide System (29.3, 30.2, 30.4 & 32.1)
- Frameless Windows
- Motorhome Mudroom™ Compartment
- Electric Entry Step
- Roof Ladder
- 8,000-lb. Trailer Hitch with 7-pin Round Connector

AUTOMOTIVE & COCKPIT

- Touchscreen AM/FM Dash Radio with Bluetooth®
- Back-Up Monitor
- Heated/Remote Exterior Mirrors with Integrated Side View Cameras
- Reclining/Swivel Leatherette Captain's Chairs with Stow-Away Coffee Table
- Emergency Engine Start Switch

- Windshield Privacy Shade
- Conversation Mirrors
- Cruise Control
- Tilt Steering Wheel
- Map Lights
- Bird's Eye™ Window
- Valve Stem Extenders on Rear Wheels
- 19.5" Tires with Stainless Steel Wheel Liners
- Dash Workstation with 110-volt & 12-volt Outlets
- Power Drop Down Hide-Away Overhead Bunk with Bunk Ladder

INTERIOR

- Rubber Tread Entry Steps with Lighted Step Well & Utility Storage
- Residential Vinyl Flooring
- 84" Interior Ceiling Height
- LED Lighting
- Ceiling Ducted Air Conditioning System
- Flat Panel Cabinet Doors with Nickel Finish Hardware
- Full Extension Ball-Bearing Metal Drawer Guides
- Leatherette Sofa Bed
- Leatherette Dream Dinette®
- Window Privacy Shades
- 12-volt Attic Fan with Cover in Living Area

KITCHEN

- Double Door Refrigerator
- 3-Burner Gas Cooktop/Oven with Bi-Fold Glass Cover
- Microwave Oven

- Laminate Countertops
- Glass Tile Backsplash
- Oversized Stainless Steel Single Bowl Sink & Single Handle Faucet w/Pull-Down Sprayer
- Pantry (27.2, 29.3, 30.2, 30.4 & 32.1)
- Coat/Broom Closet with Hanging Hooks (27.2 & 30.2)
- Waste & Recycling Containers

BEDROOM & BATHROOM

- Denver Mattress® King Size Bed (27.2 & 32.1)
- Denver Mattress® Queen Size Bed (29.3, 30.2, 30.3 & 30.4)
- Designer Headboard, Bedspread & Pillow Shams
- Bunk Beds w/Bunk Ladder (30.2)
- 12-volt Attic Fan with Cover in Bedroom
- Pull-Out Kibble Station™ with FDA Approved Pet Bowl Liner
- Foot Flush Porcelain Toilet
- Curved Shower Rod with Micro Anti-Bacterial Shower Curtain (27.2, 29.3, 30.3 & 32.1)
- Shower with Glass Door (30.2 & 30.4)

ENTERTAINMENT

- 40" LED TV in Living Area (27.2, 29.3, 30.2, 30.4 & 32.1)
- Retractable 40" LED TV in Living Area (30.3)
- Blu-Ray Player in Living Area
- 32" LED TV in Bedroom
- Two (2) 15.5" LED TVs & DVD Player in Bunk Bed Area (30.2)
- Bluetooth® Coach Radio System in Bedroom with Exterior Speakers
- Power Charging Center for Electronics

- Cable TV Ready
- Digital TV Antenna
- Exterior 32" LED TV on Manual Swivel
- Exterior Kitchen with 2.6 cu. ft. Refrigerator, Sink & 1000-watt Inverter (29.3 & 30.3)
- Exterior LP Connection

ELECTRICAL & PLUMBING

- Onan® RV QG 4000 Gas Generator
- 30-amp Detachable Shoreline Power Cord
- 15,000 BTU Roof Air Conditioner
- Pre-Wired for Solar Charging
- Second Auxiliary House Battery
- Battery Disconnect Switch
- 6-gallon DSI Gas/Electric Water Heater (27.2, 29.3, 30.2, 30.3 & 30.4)
- 10-gallon DSI Gas/Electric Water Heater (32.1)
- Black Tank Flush System
- Water Heater Bypass System
- Enclosed & Heated Holding Tanks (27.2 & 30.3)
- Enclosed Holding Tanks with Heat Pads (29.3, 30.2, 30.4 & 32.1)
- Outside Shower
- Systems Control Center

ELECTRICAL & PLUMBING OPTION

- 50-amp Detachable Shoreline Power Cord, Dual 13,500 BTU Roof Air Conditioners, and Onan® RV QG 5500 Gas Generator (29.3, 30.2, 30.3, 30.4 & 32.1)

IMPORTANT—PLEASE READ: This brochure reflects product design, fabrication, material, components and specifications at the date of printing, which date is disclosed below. **Please visit us online at ThorMotorCoach.com or consult with your selling dealership for the latest in standards, options, specification and technical information.** Photographs in the brochure may depict optional equipment or may only be available in certain floor plans. Components, appliances and the chassis may have been manufactured in a calendar year before the vehicle's designated model year. All capacities are approximate. The actual length of the vehicle may differ from that indicated in the brochure due to variances in the manufacturing processes and/or installed components. All dry weights are based on standard model features and do not include optional features or equipment. Component part and appliance manufacturers issue limited warranties covering portions of the vehicle not covered under the limited warranty we issue. Copyright Thor Motor Coach, Inc. © OH 09/18/17

YOUR LOCAL THOR MOTOR COACH DEALER



Made to fit.

thormotorcoach.com/ace



P.O. Box 1486, Elkhart, IN 46515 Sales Department: 800.860.5658 Customer Service: 877.855.2867