

**2024**  
MODEL YEAR

CLASS A DIESEL  
**ENDEAVOR**

**HR** HOLIDAY RAMBLER  
holidayrambler.com

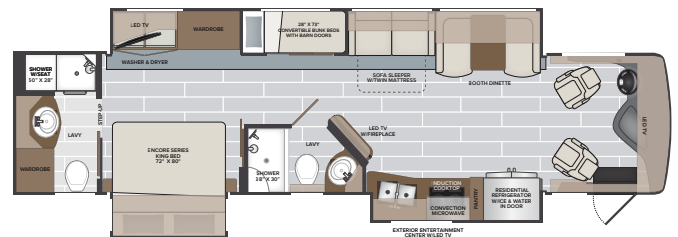
**38N | 38W**



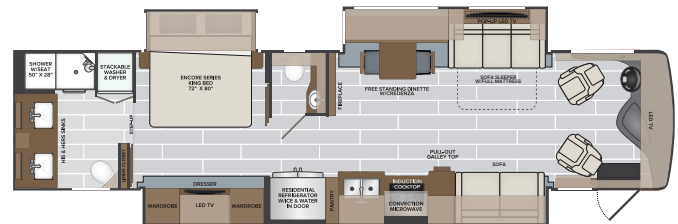
## TOP FEATURES

- Titan Bridge®
- Molded Fiberglass Roof - sleek appearance, low maintenance and lasting durability
- Dual monitors in cockpit for easy viewing of cameras and navigation
- Fireplace, *All Floorplans*
- Firefly MultiPlex Wiring w/ Color Touchscreen
- Residential refrigerator, induction cook top, and convection microwave come as standard equipment.
- WiFi Extender Pro Pack w/LTE, Cell Booster, 330W Solar Panel, Collision Mitigation by Mobileye®, Firefly Eclipse Module - Enabling Remote Access Via App Control
- Polished Porcelain Tile Floor w/living area Heated-Standard
- Generous interior and exterior storage plus large holding tank capacities
- Aqua Hot 400D provides unlimited hot water and comfortable interior heat.

**38N**



**38W**



## Freightliner® Custom Chassis Features

- XCM Chassis
- Cummins®, 6.7L, 360HP Engine
- V-Series Suspension System with the **All-New VFS Front Suspension**
- V-Ride™ technology (*enhanced stability*)
- BrakeSync (*standard*)
- Tire Pressure Monitoring (*standard*)

## AVAILABLE OPTIONS

- Dishwasher
- Power Passenger Seat w/ Power Footrest
- Motion Power Lounge w/ USB and Lighted Cupholders
- Hide-A-Loft™ Electric Drop Down Bed
- Mid-Ship LED TV (38W only)
- L-Shaped Dinette (38N only)
- Dream Dinette (38W only)
- Free Standing Dinette w/Credenza (38N only)
- Technology Package (WiFi Extender Pro Pack w/LTE, Cell Booster, 330W Solar Panel, Collision Mitigation by MobileEye, FireFly Eclipse Module - enabling remote access from app via WiFi)



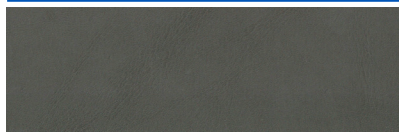
TO LOCATE A DEALER NEAR YOU VISIT OUR WEBSITE AT [HOLIDAYRAMBLER.COM](http://HOLIDAYRAMBLER.COM)

**2024**  
MODEL YEAR

CLASS A DIESEL  
**ENDEAVOR**

**HOLIDAY RAMBLER**  
holidayrambler.com

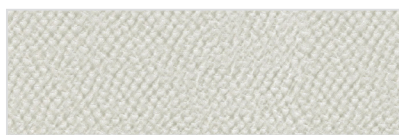
BAYTOWN



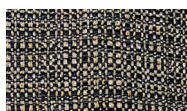
SOFA



LIVING ACCENT



BEDDING



VALANCE



BACKSPLASH

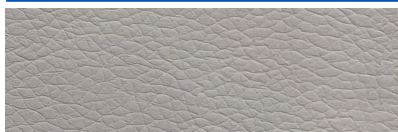


COUNTERTOP



FLOORING

RIVIERA



SOFA



LIVING ACCENT



BEDDING



VALANCE



BACKSPLASH

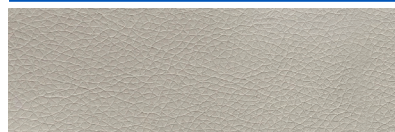


COUNTERTOP



FLOORING

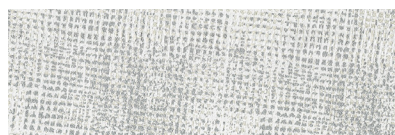
WATERFORD



SOFA



LIVING ACCENT



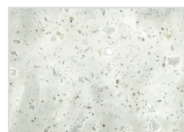
BEDDING



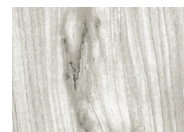
VALANCE



BACKSPLASH



COUNTERTOP



FLOORING



SUMMIT ASH



URBAN CAFÉ



GUINNESS

**NEW CABINETRY  
DOOR PROFILES FOR  
MODEL YEAR 2024**

**CHASSIS**

MODEL	38N	38W
Wheelbase	252"	263"
Front GAWR (lbs)	12,600	12,600
Rear GAWR (lbs)	21,000	21,000
GCWR (lbs)	43,400	43,400
Hitch Rating Weight (lbs)	10,000	10,000
Tongue Weight (lbs)	1,000	1,000
Fuel Capacity (gal)	100	100

**TITAN BRIDGE®**  
Model: Freightliner® Custom Chassis - XCR  
Engine: Cummins ISB 6.7L, 360HP  
Transmission: Allison® 3000 MH 6-Speed  
Alternator: Delco Remy 160 Amp  
Torque: 800 lb.-ft.



**DIMENSIONS AND CAPACITIES**

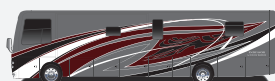
MODEL	38N	38W
Overall Length	38' 8"	40' 1"
Overall Height	12' 10"	12' 10"
Overall Width*	102"	102"
Interior Height*	84"	84"
Interior Width*	96"	96"
Patio Awning Width	18'	18'
Interior Storage (cu. ft.)	148	132
Exterior Storage (cu. ft.)	127	142
Fresh Water Capacity (gal)	105	105
Grey Water Capacity (gal)	75	75
Black Water Capacity (gal)	50	50

\*Overall Width, Interior Height and Interior Width measured with slide-box in.

**EXTERIORS**



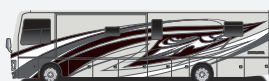
CASCADIA



GETAWAY



GLACIER



MONUMENT



PINNACLE

**ALL-NEW EXTERIOR GRAPHICS  
FOR MODEL YEAR 2024**

**ENDEAVOR**

©2023 REV RECREATION GROUP, INC. PRINTED IN USA. INVENTORY CONTROL ENDEAVOR24F1, 6/23. MODEL YEAR 2024