

# SPRINGDALE

TRAVEL TRAILERS · MINIS



KEYSTONE  
RV COMPANY

CAMP BETTER



SPRINGDALE 285TL



MASTER BEDROOM



SPRINGDALE 282BH

### 2023 SPRINGDALE | UNEXPECTED STORAGE

- SPACIOUS, EASY-TO-ACCESS UNDER-BED STORAGE
- TWO SHELVES ABOVE THE BED
- FLIP-UP BUNKS FOR OVERSIZED STORAGE (MOST MODELS)
- SHOE CUBBIES UNDERNEATH ENTERTAINMENT CENTERS
- USB PORTS WITH STORAGE NETS UNDERNEATH

### 2023 SPRINGDALE | EFFORTLESS CAMPING

- POWER TONGUE JACK
- ELECTRIC STABILIZER JACKS
- POWER AWNING
- BLACK TANK FLUSH
- **NEW** GIRARD TANKLESS WATER HEATER
- SOLARFLEX™ 200 SOLAR POWER SYSTEM W/OPTIONAL DRAGONFLY ENERGY LITHIUM-ION BATTERIES

### 2023 SPRINGDALE | UNEXPECTED TOUCHES

- LAUNDRY CHUTE IN BEDROOM
- MAGNETIC KNIFE AND UTENSIL HOLDER
- LARGE CAMPSIDE WINDOWS
- ARCHED CEILINGS
- FIREPLACE (MOST MODELS)
- DO-MORE DINETTE (MOST MODELS)
- BLADE™ HIGH PERFORMANCE AIR HANDLING SYSTEM



"We were looking for a lightweight, compact RV designed for boondocking and weekend-warrior adventures... for less than the cost of a house! Our 22' Springdale delivered. We love the compact design- no slide-out to add weight- that still feels spacious. The rear dining and sofa are great for hanging out with friends when the weather rolls in. The kitchen is well designed with plenty of counter space. Outdoor features aplenty give glamping vibes! Love this RV."

LAURA — **SPRINGDALE 222RD OWNER**

VISIT OUR WEBSITE FOR PHOTOS,  
360° TOURS, AND FULL PRODUCT DETAILS



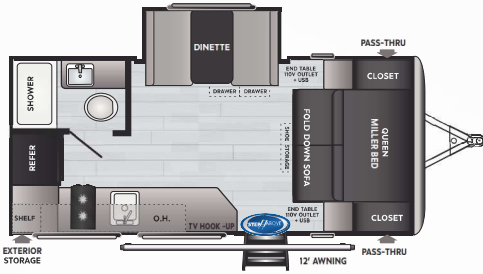


# SPRINGDALE

## THE SURPRISINGLY CLEVER CAMPER

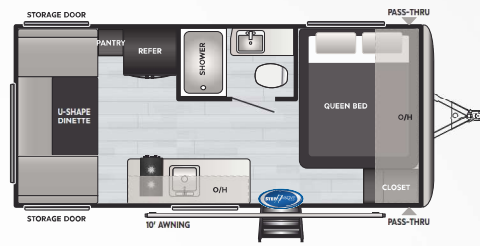


**NEW TO CAMPING?** Keystone RV's Matt Ardent & Bart Taylor walk you through everything you need to know from your pre-travel checklist to full campsite set-up. You can find this series on Keystone's YouTube channel or follow this QR code to our website.



**1740RK** | WEIGHT 4030 | LENGTH 21' 5"

MINI ▪ SINGLE AXLE, REAR KITCHEN, INCREDIBLE COUNTERTOP SPACE, MILLER BED



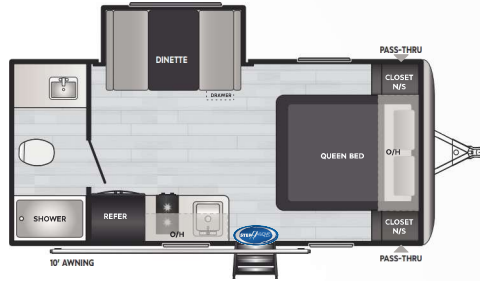
**1750RD** | WEIGHT 3415 | LENGTH 21' 5"

MINI ▪ SINGLE AXLE, REAR DINETTE, PANORAMIC VIEW



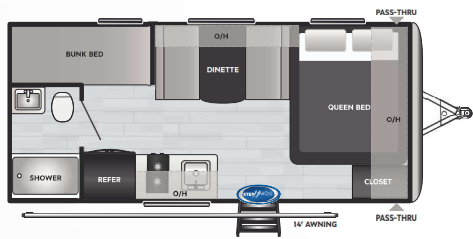
**1760BH** | WEIGHT 3796 | LENGTH 21' 5"

MINI ▪ SINGLE AXLE, BUNKHOUSE, DINETTE SLIDE



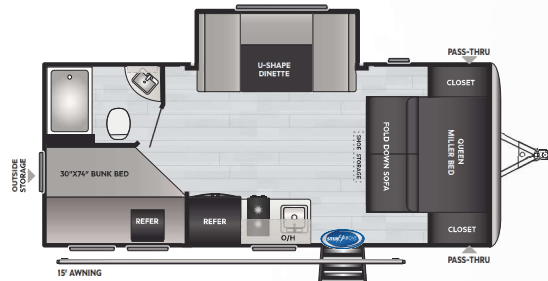
**1790FQ** | WEIGHT 3775 | LENGTH 21' 5"

MINI ▪ SINGLE AXLE, COUPLE'S COACH, DINETTE SLIDE, LARGE BATHROOM



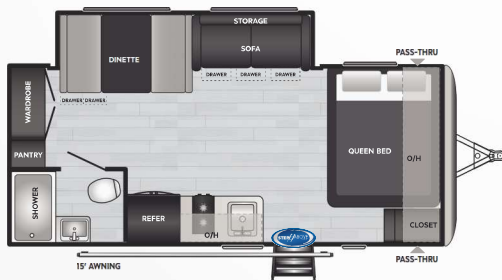
**1800BH** | WEIGHT 3396 | LENGTH 21' 5"

MINI ▪ SINGLE AXLE, LIGHTWEIGHT, BUNKHOUSE



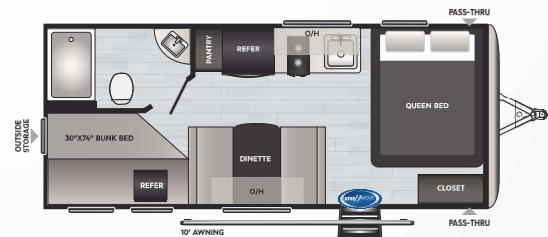
**NEW!** **1810BH** | WEIGHT 4435 | LENGTH 22' 9"

MINI ▪ SINGLE-AXLE, DOUBLE-OVER-DOUBLE, MILLER BED



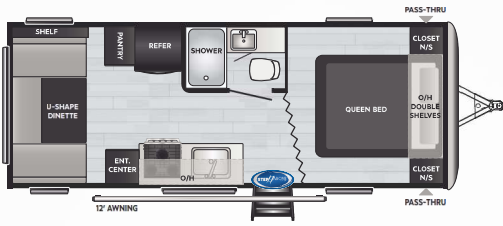
**1860SS** | WEIGHT 4310 | LENGTH 22' 10"

MINI ▪ SINGLE AXLE, LARGE SLIDE ROOM, PANTRY/WARDROBE COMBO



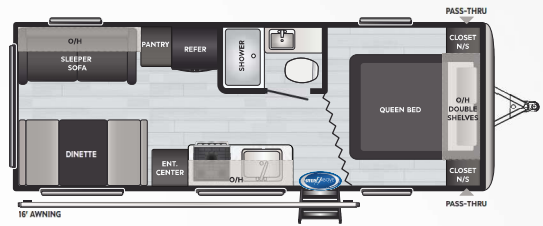
**2010BH** | WEIGHT 4069 | LENGTH 22' 10"

MINI ▪ FIRST DOUBLE AXLE BUILT AS A MINI, TONS OF SLEEPING CAPACITY



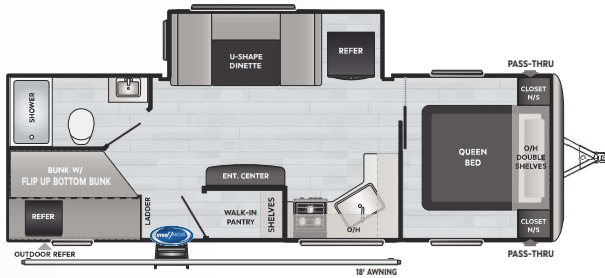
**202RD** | WEIGHT 4780 | LENGTH 25' 0"

▪ REAR DINETTE, PANORAMIC VIEW



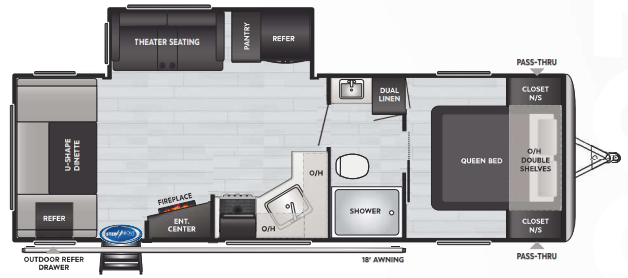
**220RD** | WEIGHT 4937 | LENGTH 26' 3"

▪ PANORAMIC VIEW, SOFA & BOOTH DINETTE



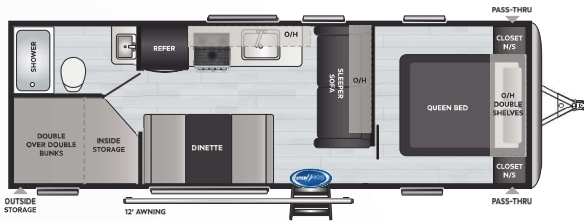
**251BH** | WEIGHT 6367 | LENGTH 29' 11"

▪ UNDER 30FT, DOUBLE-OVER-DOUBLE, WALK-IN PANTRY



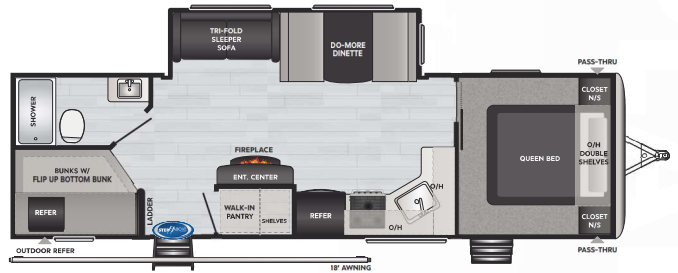
**NEW! 256RD** | WEIGHT 6383 | LENGTH 29' 11"

▪ REAR DINETTE W/ PANORAMIC VIEW



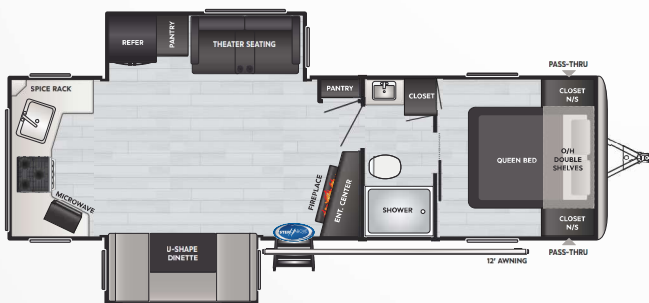
**260BH** | WEIGHT 5311 | LENGTH 28' 10"

▪ DOUBLE BUNKS, LIGHTWEIGHT



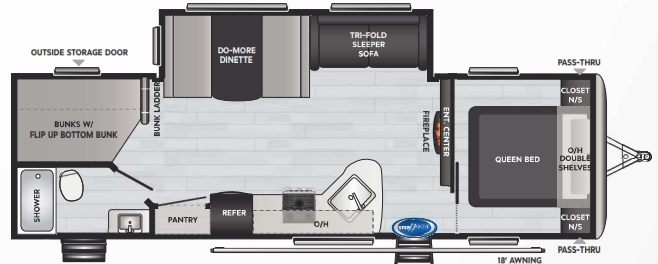
**280BH** | WEIGHT 7198 | LENGTH 32' 11"

▪ LARGE SLIDE, WALK-IN PANTRY, DOUBLE BUNKS, W/D PREP



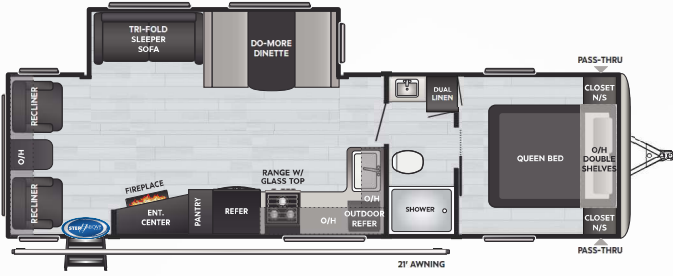
**NEW! 281RK** | WEIGHT 7411 | LENGTH 32' 5"

▪ PANORAMIC REAR KITCHEN, GREAT ROOM



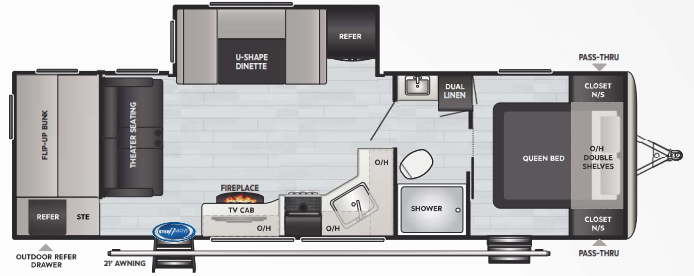
**282BH** | WEIGHT 6907 | LENGTH 32' 2"

▪ LARGE SLIDE, DOUBLE ENTRY, DOUBLE BUNKS



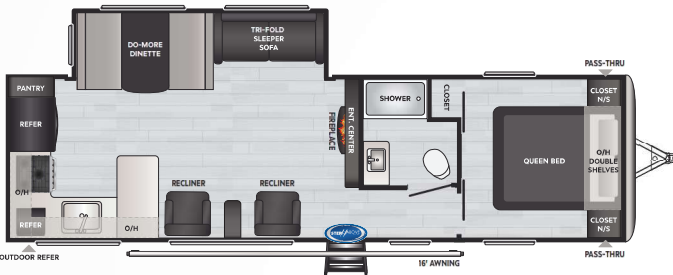
**285TL** | WEIGHT 7101 | LENGTH 33' 6"

▪ SINGLE-SLIDE, QUEEN BED, BOOTH DINETTE



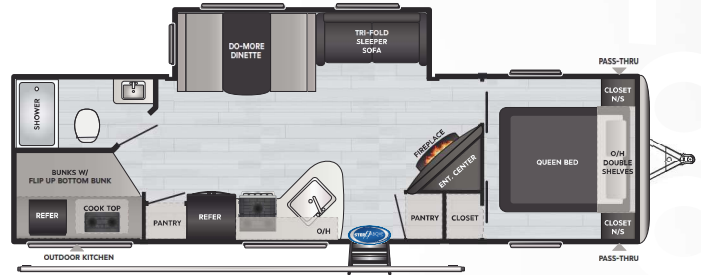
**NEW! 286BHU** | WEIGHT 6955 | LENGTH 32' 11"

▪ LARGE SLIDE, DOUBLE ENTRY, DOUBLE BUNKS



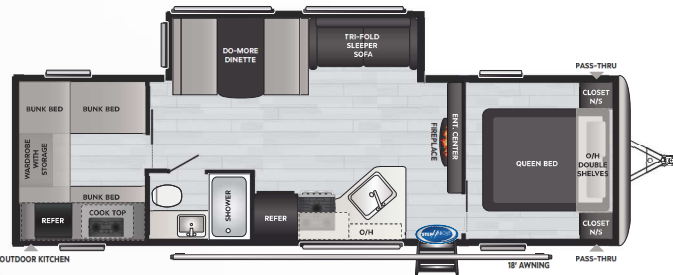
**293RK** | WEIGHT 7134 | LENGTH 33' 4"

▪ REAR KITCHEN, HUGE COUNTERTOP, AMAZING LIVING AREA



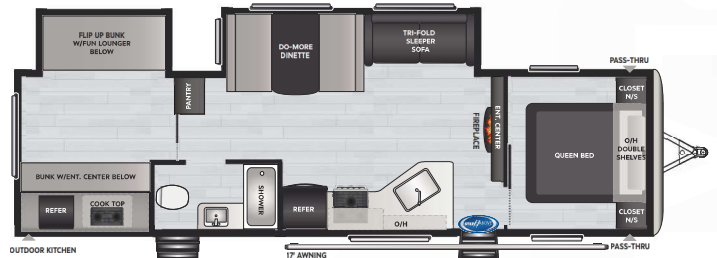
**295BH** | WEIGHT 7116 | LENGTH 33' 5"

▪ DOUBLE-OVER-DOUBLE, ULTIMATE CLOSET AND PANTRY, OUTDOOR KITCHEN



**298BH** | WEIGHT 6999 | LENGTH 32' 8"

▪ LARGE SLIDE, QUAD BUNKS, OUTSIDE KITCHEN



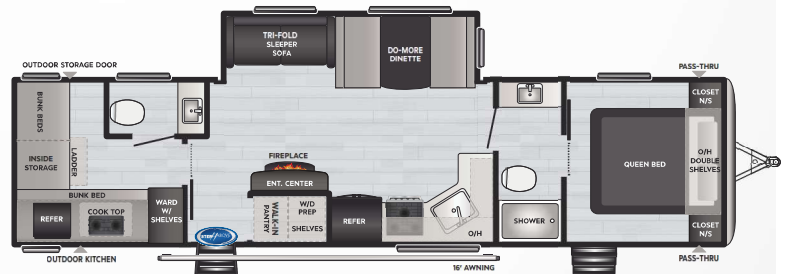
**303BH** | WEIGHT 8035 | LENGTH 35' 1"

▪ PRIVATE BUNKROOM, MAXIMIZING SLEEPING, DUAL-ENTRY



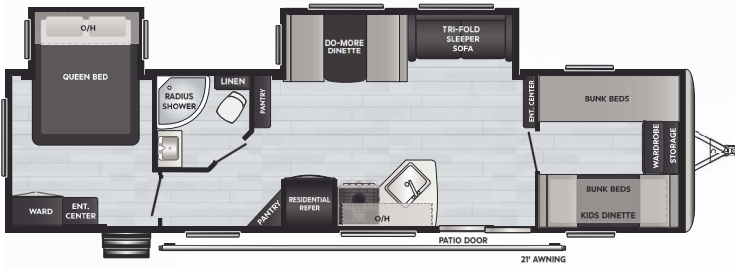
**311RE** | WEIGHT 8328 | LENGTH 35' 10"

▪ HUGE ENTERTAINMENT AREA, FIREPLACE, DUAL SLIDES



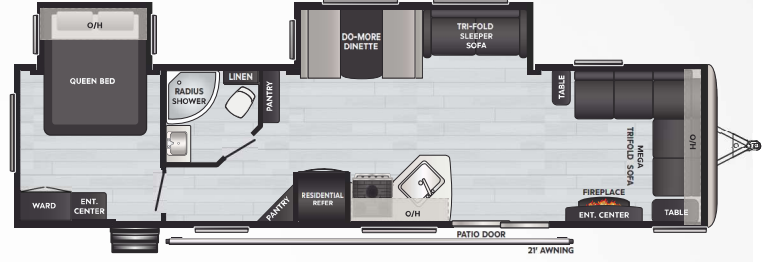
**335BH** | WEIGHT 8131 | LENGTH 37' 9"

▪ BATH & A HALF, ULTIMATE BUNKHOUSE, FIREPLACE, LARGE WALK-IN PANTRY, W/D PREP



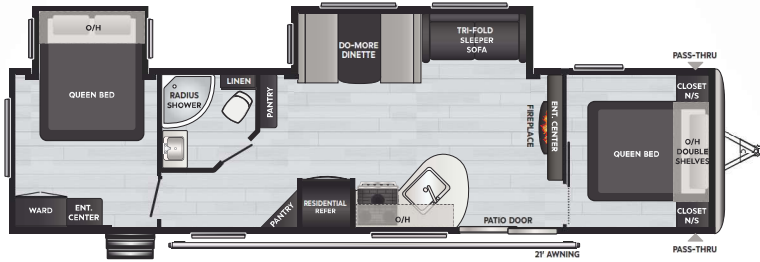
**38BH** | WEIGHT 8994 | LENGTH 38' 11"

▪ PRIVATE BUNKROOM, MAXIMUM SLEEPING CAPACITY, GLASS PATIO DOOR



**38FL** | WEIGHT 8660 | LENGTH 38' 11"

▪ FRONT LOUNGE, FIREPLACE, GLASS PATIO DOOR



**38FQ** | WEIGHT 8883 | LENGTH 38' 11"

▪ TWO QUEEN BEDROOMS, GLASS PATIO DOOR

MODEL	WEIGHT	CARRYING CAPACITY	HITCH WEIGHT	FRESH WATER**	WASTE WATER	GRAY WATER	LPG	LENGTH*	WIDTH	HEIGHT	AWNING
1740RK	4030	1170	525	27	30	30	20	21' 5"	8'	10' 2"	10'
1750RD	3415	985	520	27	30	30	20	21' 5"	8'	10' 2"	10'
1760BH	3796	704	520	27	30	30	20	21' 5"	8'	10' 2"	10'
1790FQ	3775	705	480	27	32	30	20	21' 5"	8'	10' 2"	10'
1800BH	3396	1004	485	27	30	30	20	21' 5"	8'	10' 2"	10'
1810BH	4435	765	595	21	30	60	20	22' 9"	8'	10' 4"	15'
1860SS	4310	890	635	27	30	30	20	22' 10"	8'	10' 4"	14'
2010BH	4069	1931	570	27	30	30	20	22' 10"	8'	10' 5"	10'
202RD	4780	1720	565	46	30	30	40	25' 0"	8'	10' 11"	12'
220RD	4937	2643	580	46	30	30	40	26' 3"	8'	10' 11"	16'
251BH	6367	1543	915	46	39	69	40	29' 11"	8'	10' 11"	18'
256RD	6383	1427	845	46	30	39	40	29' 11"	8'	10' 6"	18'
260BH	5311	2199	510	46	30	30	40	28' 10"	8'	10' 6"	12'
280BH	7198	2402	805	46	39	60	40	32' 11"	8'	11' 3"	18'
281RK	7411	2209	825	48	30	78	40	32' 5"	8'	11' 3"	12'
282BH	6907	1693	690	46	39	69	40	32' 2"	8'	11' 3"	18'
285TL	7101	2419	725	46	30	69	40	33' 6"	8'	11' 3"	21'
286BHU	6955	2045	865	46	30	39	40	32' 11"	8'	11' 3"	21'
293RK	7134	1666	830	46	30	69	40	33' 4"	8'	10' 11"	16'
295BH	7116	2634	955	46	39	69	40	33' 5"	8'	10' 11"	21'
298BH	6999	2481	685	46	30	39	40	32' 8"	8'	10' 11"	18'
303BH	8035	1735	970	46	39	39	40	35' 1"	8'	11' 4"	16'
311RE	8328	1432	960	46	30	78	40	35' 10"	8'	10' 11"	18'
335BH	8131	3069	1100	46	69	117	40	37' 9"	8'	10' 11"	12'
38BH	8994	2106	915	46	39	69	60	38' 11"	8'	11' 5"	21'
38FL	8860	2220	880	46	39	69	60	38' 11"	8'	11' 5"	21'
38FQ	8883	2117	860	46	39	69	60	38' 11"	8'	11' 5"	21'



# TAKE CHARGE OF HOW YOU CAMP

EXCEPTIONAL QUALITY, IMPOSSIBLY VERSATILE, SolarFlex™ IS SHATTERING CUSTOMER'S EXPECTATIONS OF FACTORY-INSTALLED SOLAR POWER. EXCLUSIVELY AVAILABLE ON ALL KEYSTONE RV MODELS.



Relieve battery anxiety with legendary Lithium-ion deep cycle batteries – the ultimate replacement for lead acid. Lightweight, reliable, and longer-lasting, Dragonfly Energy batteries are made in the USA and available exclusively from Keystone RV and authorized dealers.

## MY KEYSTONE OWNER'S APP

THE ONLY APP YOU'LL NEED...

» MANUALS & QUICK START GUIDES

» HOW-TO VIDEOS



» FIRST-TIME CAMPER'S ADVICE

» ACCESS TO YOUR RV'S MOBILE APPS

Available for iOS and Android devices.



FOLLOW US FOR THE LATEST!



DISCLAIMER: Product information is as accurate as possible as of the date of publication of this brochure. All features, floor plans, and specifications in this brochure are subject to change without notice. Please also consult Keystone's web site at [www.keystonerv.com](http://www.keystonerv.com) for more current product information and specifications. Tow Vehicle Disclaimer. CAUTION: Owners of Keystone recreational vehicles are solely responsible for the selection and proper use of tow vehicles. All customers should consult with a motor vehicle manufacturer or their dealer concerning the purchase and use of suitable tow vehicles for Keystone products. Keystone disclaims any liability or damages suffered as a result of the selection, operation, use or misuse of a tow vehicle. KEYSTONE'S LIMITED WARRANTY DOES NOT COVER DAMAGE TO THE RECREATIONAL VEHICLE OR THE TOW VEHICLE AS A RESULT OF THE SELECTION, OPERATION, USE OR MISUSE OF THE TOW VEHICLE. \*Length is defined as the distance from the centerline of hitch pin/coupler to rear bumper of trailer. \*\* Fresh water capacity includes water heater. Please review owner's manual prior to purchase for more information on service warranties, extended use, towing and maintenance. Owner's manuals can be found at [keystonerv.com](http://keystonerv.com). PRINT 02.2023