

Winnebago
ADVENTURER
2010



Winnebago ADVENTURER®

When it comes to finding the definitive Class A motor home, the search is over with the Winnebago Adventurer®. It offers incredible spaciousness with SmartSpace™ design elements and solid value that savvy RVers look for in a motor home. This year's lineup includes standard full-body paint exteriors and five innovative floorplans, including a full-wall slide on the 32H, 35P and 37F and a triple slide with available bunk beds and a king-size bed on the 35Z. The 37F even offers a half bath for guests. Each model is available on the fuel-efficient Freightliner® FRED chassis for front-end diesel power. Get a first-hand look at the 2010 Winnebago Adventurer and see why, year after year, it's at the top of the wish list for so many RV enthusiasts.

Prepare to Relax

Enjoy a complete entertainment experience when you travel in your Adventurer. A large LCD TV, video selection system and home theater sound system with DVD player give you plenty of options. Every Adventurer also comes pre-wired for the King-Dome® HD satellite system. Add the 600-watt inverter and you can enjoy all of your entertainment amenities without generator or shoreline power.

Several flooplans offer a mid-coach entertainment center that provides ideal viewing from the lounge area. You can also add an electric fireplace in the 38N for extra coziness on a cool night. The plush Stitchcraft furniture is designed for maximum comfort, offers plenty of potential seating configurations and is available in UltraLeather™ for added luxury and style. You can also choose vinyl tile flooring in the lounge and dining areas for quicker clean-ups.

Relax in style in the available Euro Chair with ottoman (NA 32H & 35P), which comes standard with UltraLeather.



GoWinnebago.com Watch key feature videos, take interactive tours, see the latest promotional offers and a whole lot more at GoWinnebago.com.



Theater Seating There's no better way to enjoy a movie than on the available Rest Easy® theater seating with center console. For added convenience, it also converts into dual twin beds (NA 35Z).



Hoop-Base Chair The lounge chair—shown here in available UltraLeather—rocks, reclines with a footrest and can be moved to your favorite spot when you're not traveling (35Z & 38N).



Dinner Time

The galley offers upscale features such as a filtered cold water faucet, pullout sprayer and Corian® countertops with solid-surface sink and range covers. You can also choose between an Amana® range top with storage or an oven below it. You'll find abundant food storage in the pantry and beautiful cabinetry with satin nickel hardware and full-extension drawer slides that allow full access to stored items. A microwave oven with a vented range fan comes standard or you can select the stainless steel microwave/convection oven.

U-Shaped Dinette A U-shaped dinette comes standard in the 32H and is available in UltraLeather. The BenchMark® full-comfort dinette comes standard on the 35Z, 35P and 37F and is available on the 32H. It features innerspring cushions, storage below the seat and the Dream Dinette™ legless table that rises and lowers with ease.

Refrigerator Choose the two-door refrigerator or upgrade to the four-door model with icemaker to hold even more food and beverages.



REST EASY® Another great example of SmartSpace design found throughout the Adventurer is the Rest Easy multi-position lounge. It transforms from a sofa into a recliner or a bed with just the press of a button.





Mirrored Wardrobes The 38N bedroom provides plenty of storage and opposing windows for excellent cross-coach ventilation.



38N Granite Cliff with Coffee-Glazed Sierra Maple

Master Suite

Escape to the bedroom where you'll find an additional LCD HDTV (optional 35P and 38N) and an available stereo system with a CD/DVD player, alarm clock and an MP3 input. Four models offer a king-size bed, including the 37F that also features power adjustments and the Ideal Rest™ body-conforming memory foam mattress. The Sleep Number® bed by Select Comfort™ is available if you want independently adjustable firmness on each side of the bed (NA 37F). Available bunk beds in the 35Z provide kid-friendly accommodations or can be used as additional wardrobe space. Flip up the bottom bunk to reveal extra storage.

Fun to Drive

Driving cross country or even across town is a joy in your new Adventurer. Controls and navigation tools such as the available rearview monitor are smartly positioned for a more enjoyable driving experience. Driver and passenger seats include adjustable lumbar support, swivel to become part of the living area and are available in UltraLeather. Available window shades and a powered front shade help protect the driver and passenger from the glare of the sun. You'll also enjoy a cab sound control package that reduces motor noise and a one-piece windshield for optimal view of the road.

The RV Radio® lets you listen to AM/FM stereo or CDs. It also includes a weather band and an auxiliary connection for your MP3 player. Two remotes let you control the radio from both the steering wheel and living area.

For even more listening pleasure, add the Sirius® Plug-N-Play satellite radio system and receive a six-month complimentary subscription. This system includes a second docking station for your tow vehicle and an iPod interface connector that allows you to play and operate your iPod through the RV Radio.



Cab Seats Upgrade the driver's seat with UltraLeather and 6-way power assist for added comfort on long drives.



Side-View Cameras Available cameras are activated by the turn signals and viewed on the rearview monitor.



Workstation The pullout workstation creates a multifunctional space that is great for jotting down notes or using your laptop.

Room for More

Storage capacity is a top priority in the Adventurer. We also make your things easier to access with our exclusive StoreMore® slideout storage system (35Z & 38N) that allows the storage bays to extend with the slideroom so you don't have to crawl on your hands and knees to get what you need. Hookups are simplified in the exterior service center, which houses important plumbing connections. It includes a wash station and a winterization system for easy storage prep.

Thermo-insulated windows provide added thermal efficiency while aluminum wheels give your coach a fresh look. Level the Adventurer with the standard hydraulic jacks and use the KeyOne™ system to open doors and compartments with a single key.



Upgrades Choose the standard awning or an available electric awning with wind sensor and remote control. Large-capacity Group 31 batteries deliver the battery life you need for extended dry camping.



Service Center

Color-coded labels identify connection points. The QuickPort® service connection hatch makes hook-ups fast and easy and allows the compartment door to be shut while connected to exterior service. The exterior shower is great for cleaning up muddy shoes or gear.



Shades Maintain your privacy using the available powered duo shades with light-filtering and blackout shades.



The **ONEPLACE** systems center lets you monitor and control key systems from one convenient location.

The **POWERLINE** energy management system monitors electrical usage and automatically cycles appliances on and off to prevent tripped campground circuit breakers.

The **TRUEAIR** residential air conditioning system with heat pump evenly cools throughout the coach.



TRUELEVEL The holding-tank monitoring system uses sonar technology to read liquid levels from outside the tank. There are no probes to corrode or clog, just accurate readings time after time.



Entertainment Center The available exterior entertainment center includes an AM/FM stereo, CD player, remote and power outlets. Upgrade with a 32" TV on the 37F.

Floorplans

Dimensions shown are for sleeping space only and may vary due to styling differences. Dashed lines denote overhead storage areas. Floorplans are also available online at GoWinnebago.com.



Standard
UltraLeather



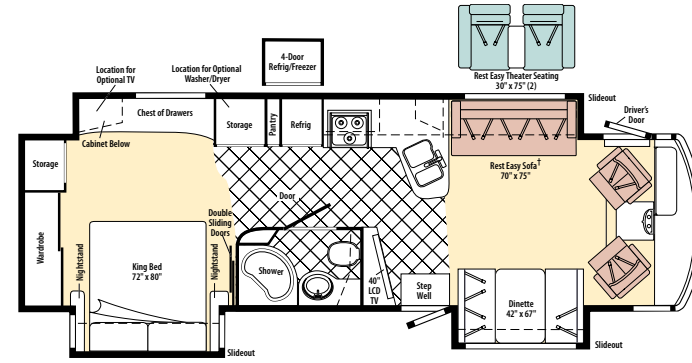
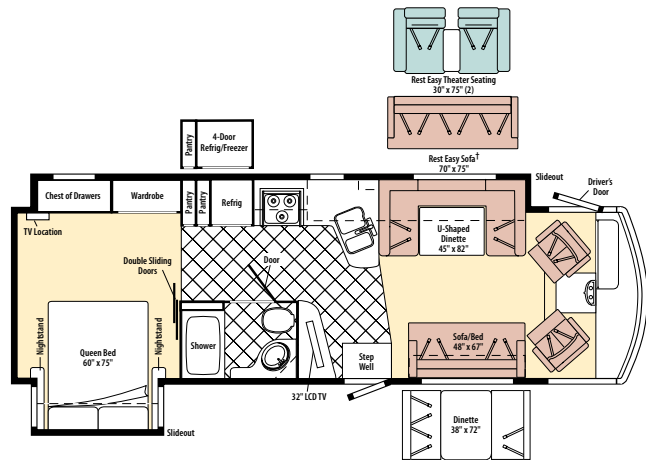
Optional
UltraLeather



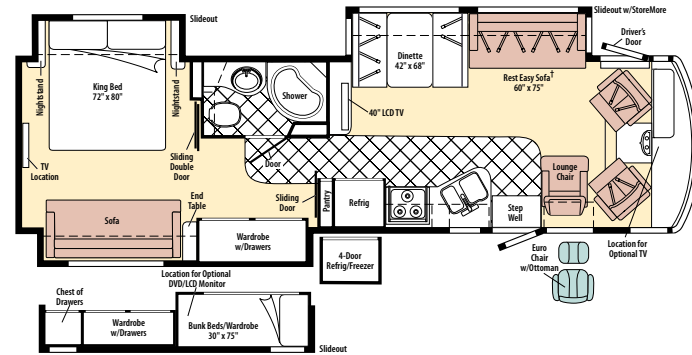
Carpet



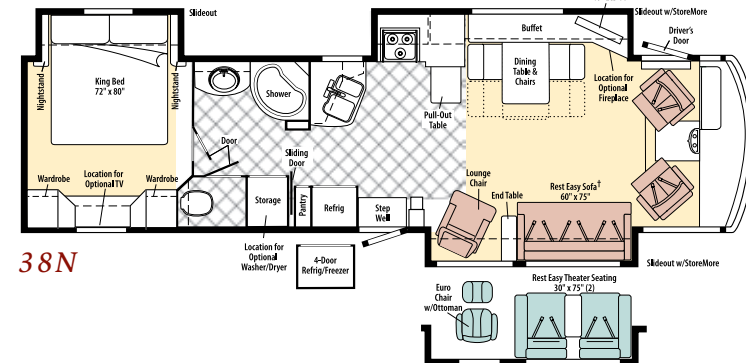
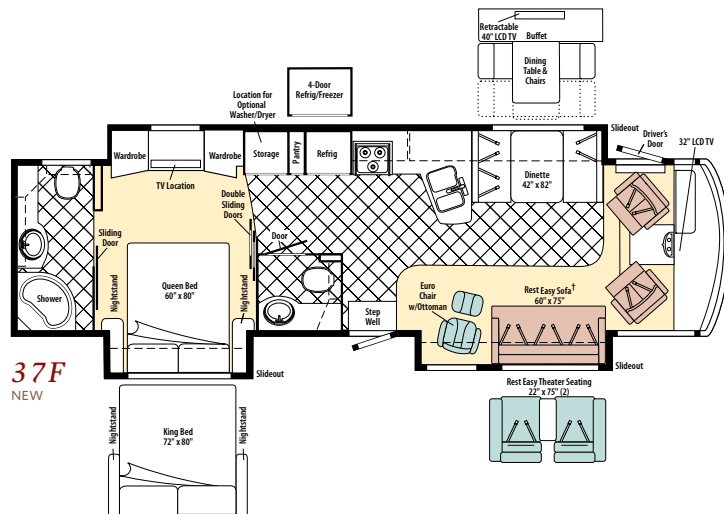
Vinyl
Tile



35P



35Z



38N

† Available with single or dual controls. Dual control option includes only two seat belts.

Specifications

Specifications are also available online at GoWinnebago.com.

Weights & Measures

	32H	35P	35Z	37F	38N
Length	32'10"	35'5"	36'3"	37'4"	38'9"
Exterior Height ¹	12'3"	12'3"	12'3"	12'3"	12'3"
Exterior Width ²	8'5"	8'5"	8'5"	8'5"	8'5"
Exterior Storage ^{3,6} (cu. ft.)	92.9	85.9	89.5	100	90.3
Awning Length	16'	17'	14'	18'	19'
Interior Height	7'2"	7'2"	7'2"	7'2"	7'2"
Interior Width	8'	8'	8'	8'	8'
Freshwater Capacity w/Heater ⁴ (gal.)	87	91	90	87	90
Holding Tank Capacity - Black/Gray ⁴ (gal.)	43/48	43/60	65/53	52/71	53/56
LP Capacity ⁵ (gal.)	23	28	28	28	28
Fuel Capacity (gal.)	75 ^{A,C} /80 ^E	75 ^{A,B,C,D} /80 ^E	75 ^{A,B,C,D} /80 ^E	75 ^{B,C,D} /80 ^E	75 ^{B,D} /80 ^E
GCWR ⁷ (lbs.)	26,000 ^{A,C,E}	26,000 ^{A,C} /30,000 ^{B,D,E}	26,000 ^{A,C} /30,000 ^{B,D,E}	30,000 ^{B,D,E} /26,000 ^C	30,000 ^{B,D,E}
GVWR (lbs.)	22,000 ^{A,C,E}	22,000 ^{A,C} /24,000 ^{B,D} / 27,000 ^E	22,000 ^{A,C} /24,000 ^{B,D} / 27,000 ^E	24,000 ^{B,D} / 22,000 ^C /27,000 ^E	24,000 ^{B,D} /27,000 ^E
GAWR - Front (lbs.)	7,500 ^A /8,500 ^C /9,000 ^E	7,500 ^A /9,000 ^{B,D} / 8,500 ^C /10,000 ^E	7,500 ^A /9,000 ^{B,D} / 8,500 ^C /10,000 ^E	9,000 ^{B,D} /8,500 ^C /10,000 ^E	9,000 ^{B,D} /10,000 ^E
GAWR - Rear (lbs.)	15,000 ^{A,C,E}	15,000 ^{A,C} /15,500 ^{B,D} / 17,500 ^E	15,000 ^{A,C} /15,500 ^{B,D} / 17,500 ^E	15,500 ^{B,D} / 15,000 ^C /17,500 ^E	15,500 ^{B,D} /17,500 ^E
Wheelbase	220"	228"	228"	248"	248"

A Ford F53 22,000-lb. Chassis w/22.5" tires

B Ford F53 24,000-lb. Chassis w/22.5" tires

C Workhorse W22 Chassis w/22.5" tires

D Workhorse W24 Chassis w/22.5" tires

E Freightliner FRED Chassis w/22.5" tires



Ford F53 Chassis



Workhorse W24 Chassis



Freightliner FRED Chassis

Chassis

Ford® F53 22,000-lb. Chassis (32H, 35P & 35Z)

Ford® F53 24,000-lb. Chassis (38N)

- 362-hp 6.8L V10 SEFI Triton® engine
- TorqShift™ 5-speed automatic overdrive transmission w/tow haul
- HydroMax brakes w/ABS
- 175-amp. alternator (early production equipped with 130-amp. alternator)

Workhorse™ W22 Chassis (37F)

- 340-hp GM Vortec™ 8.1L V8 engine
- Allison® 1000 MH 6-speed automatic overdrive transmission
- Hydraulic brakes w/ABS
- 145-amp. alternator

Trailer Hitch⁷: 5,000-lb. drawbar/500-lb. maximum vertical tongue weight w/7-pin connector

Stylized aluminum wheels

Hydraulic leveling jacks

	32H	35P	35Z	37F	38N	Optional Equipment
						Ford F53 24,000-lb. Chassis
						Workhorse W22 Chassis
						Workhorse W24 Chassis
						• 340-hp GM Vortec 8.1L V8 engine
						• Allison 2350 MH 6-speed automatic overdrive transmission w/2 overdrive gears, transmission-grade braking
						• Hydraulic brakes w/ABS
						• 145-amp. alternator
						Freightliner® FRED Chassis
						• 300-hp Cummins ISB 6.7L engine
						• Allison 2350 MH automatic transmission (1000 MH on 32H)
						• Engine brake
						• BOSCH hydraulic brakes
						• 160-amp. alternator

Cab Conveniences

RV Radio®: AM/FM stereo, CD player, weather band, remotes and MP3 input

Chassis/house battery radio power switch

Cab Seats: adjustable armrests, lumbar support, multi-adjustable recline and swivel/slide

Cab sound control package

Convenience tray

Cruise control

12-volt powerpoint

Map lights

Front wraparound curtain

Tilt power steering

Sunvisors

Dash workstation

C.B. radio prep kit

Power mirrors w/defrost

32H	35P	35Z	37F	38N	Optional Equipment
○	○	○	○	○	Sirius® Plug-N-Play satellite radio, 6-month subscription included, iPod interface connector, receiver, 2 docking ports
○	○	○	○	○	6-way power-assist driver seat
○	○	○	○	○	Defroster fans
○	○	○	○	○	Rearview monitor system w/one-way audio
○	○	○	○	○	Side-view video camera system
○	○	○	○	○	Powered front shade w/solar and blackout shades, privacy curtain for driver and passenger
○	○	○	○	○	Light-filtering roller shades for driver and passenger windows
○	○	○	○	○	Passenger footrest (NA w/ Workhorse Chassis)

Interior

40" LCD TV (35P, 35Z & 38N)

32" LCD TV (32H & 37F)

Amplified digital TV antenna

Home Theater Sound System: amplifier, DVD player, receiver, 5 speakers and subwoofer

OnePlace® systems center

Satellite system ready, including bedroom TV

Day/night pleated shades (lounge and dinette)

Tinted dual-glazed/thermo-insulated windows

Key-activated slideroom master lock switch

Video selection system (32H, 35P, 35Z & 38N)

HD video selection system (37F)

Roof vent (galley)

Mini blinds (galley)

Pleated blinds (bedroom)

Powered roof vent (bath)

32H	35P	35Z	37F	38N	Optional Equipment
○	○	○	○	○	32" LCD TV
○	○	○	○	○	Dining table/buffet/chairs w/retractable 40" LCD TV
○	○	○	○	○	RV digital satellite dish
○	○	○	○	○	King-Dome® automatic satellite dish
○	○	○	○	○	King-Dome HD-ready in-motion satellite dish
○	○	○	○	○	Electric fireplace
○	○	○	○	○	Washer/dryer combination (requires 10-gal. water heater)
○	○	○	○	○	Vinyl tile front to bedroom (slideouts, cab and bedroom areas are carpeted)
○	○	○	○	○	Powered ventilator fan (galley)

Galley

Corian® solid-surface countertop

Sharp® microwave oven w/vented range fan

Amana® 3-burner range top w/storage below

Corian sink and range covers

Norcold® refrigerator/freezer

Filtration system w/separate cold water faucet

32H	35P	35Z	37F	38N	Optional Equipment
○	○	○	○	○	Sharp stainless steel microwave/convection oven w/range fan
○	○	○	○	○	Amana 3-burner range w/oven
○	○	○	○	○	Norcold refrigerator/freezer w/icemaker
○	○	○	○	○	Norcold 4-door refrigerator/freezer w/icemaker

Bath

Shower w/wall surround

Textured glass shower door

Laminate countertop

Flexible showerhead

Skylight (32H, 35P, 35Z & 38N)

Bedroom

Powered queen bed w/Ideal Rest memory foam mattress (37F)

Queen bed w/innerspring mattress (32H)

King bed w/innerspring mattress (35P, 35Z & 38N)

19" LCD TV (32H)

26" LCD TV (35Z & 37F)

DVD cable ready for bedroom TV (NA 32H)

Bedspring, pillow shams and pillows

Storage area below bed (NA 35Z & 37F)

32H	35P	35Z	37F	38N	Optional Equipment
○	○	○	○	○	Sleep Number® bed by Select Comfort™
○	○	○	○	○	Bunk beds/wardrobe, foam mattress, mattress cover, pillows w/shams
○	○	○	○	○	2 DVD players w/wireless headphones, 8.5" LCD monitors, digital TV ready (bunk area)
○	○	○	○	○	26" LCD TV
○	○	○	○	○	Stereo System: AM/FM, CD/DVD player, alarm clock and MP3 input
○	○	○	○	○	Powered king bed w/Ideal Rest memory foam mattress

Exterior

Exterior compartment lights

Patio awning

Entrance w/screen door

TriMark® KeyOne™ lock system

Porch light

Electric entrance steps

Ladder

Front and rear mud flaps

32H	35P	35Z	37F	38N	Optional Equipment
○	○	○	○	○	Exterior Entertainment Center: AM/FM stereo, CD player, remote, speakers and removable TV table
○	○	○	○	○	Electric patio awning w/wind sensor and remote
○	○	○	○	○	Lower front protective mask
○	○	○	○	○	Exterior Entertainment Center: 32" LCD TV, AM/FM stereo w/CD/DVD player and remote (packaged in sidewall near entrance door)

Heating & Cooling System

35,000 BTU low-profile furnace (32H)

40,000 BTU two-speed, low-profile furnace (35P, 35Z, 37F & 38N)

TrueAir® residential central air conditioning w/heat pump

Electrical System w/QuickPort®

AC/DC distribution system

55-amp. converter/charger

Service Center: cable TV input, power cord, QuickPort hatch, portable satellite dish hookup

5,500-watt Cummins Onan® Marquis Gold™ generator (gas, NA w/FRED chassis)

PowerLine® energy management system

Auxiliary start circuit

Two deep-cycle Group 31 batteries

Battery disconnect systems (coach and chassis)

Automatic dual-battery charge control

Generator/shoreline automatic changeover switch

30-amp. power cord

32H	35P	35Z	37F	38N	Optional Equipment
○	○	○	○	○	600-watt inverter
○	○	○	○	○	50-amp. power cord
○	○	○	○	○	10-watt solar panel battery charger
○	○	○	○	○	5,500-watt Cummins Onan Marquis Gold generator (LP, requires FRED chassis)
○	○	○	○	○	6,000-watt Cummins Onan Quiet Diesel™ generator (requires FRED chassis)
○	○	○	○	○	Cummins Onan Energy Command™ automatic generator start system

Plumbing System w/QuickPort®

Service Center: QuickPort hatch, exterior wash station w/pump switch, pressurized city water hookup w/diverter valve, drainage valves, 10' sewer hose, tank flushing system

LP Tank, permanent mount w/gauge

TrueLevel™ holding-tank monitoring system

On-demand water pump

Heated holding tank compartment

6-gallon electric water heater w/motoraid and auxiliary auto heater

Winterization Package: water heater bypass valve and siphon tube

32H	35P	35Z	37F	38N	Optional Equipment
○	○	○	○	○	10-gallon electric water heater w/motoraid and auxiliary auto heater (LP, gas)

Safety

Seat belts

Child seat tether anchor (32H, 35P & 35Z)

LP, smoke and carbon monoxide detectors

10 BC fire extinguisher

Ground fault interrupter

Fog lamps

High-mount brake lamps

Warranty⁸

12-month/15,000-mile basic warranty⁹

36-month/36,000-mile limited warranty on structure⁹

10-year limited parts-and-labor warranty on roof skin⁹

○ Optional

NA Not Available

- The height of each model is measured to the top of the tallest standard feature and is based on the curb weight of a typically equipped unit. The actual height of your vehicle may vary by several inches depending on chassis or equipment variations. Please contact your dealer for further information.
- Adventurer floorplans feature a wide-body design – over 96". In making your purchase decision, you should be aware that some states restrict access on some or all state roads to 96" in body width. Before making your purchase decision, you should confirm the road usage laws in the states of interest to you.
- The load capacity of your motor home is designated by weight, not by volume, so you cannot necessarily use all available space when loading your motor home.
- Capacities are based on measurements prior to tank installation. Slight capacity variations can result due to installation applications.
- Capacities shown are tank manufacturer's listed water capacity (W.C.) Actual filled LP capacity is 80% of listing due to overfilling prevention device on tank.
- Measurements are based on the most recent information available. See your dealer for specifications.
- Actual towing capacity is dependent upon your particular loading and towing circumstances, which includes the GVWR, CAWR and GCWR as well as adequate trailer brakes. Please refer to the Operator's Manual of your vehicle for further towing information.
- See separate chassis warranty.
- See your dealer for complete warranty information.

Not all items available in combination. See dealer for details.

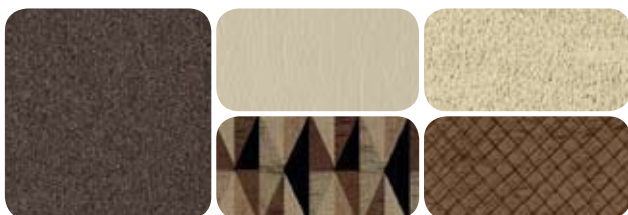
Winnebago Industries® continuing program of product improvement makes specifications, equipment, model availability and prices subject to change without notice. Comparisons to other motor homes are based on the most recent information available at printing.

Interior Décor

Choose from three fabric collections and five cabinet wood choices, each with satin nickel hardware.



Sandhurst with available Bark UltraLeather™



Granite Cliff with available Sandbox UltraLeather



Cedar Edge with available Fields UltraLeather



Sierra Maple Honey Cherry Belmont Maple Forest Cherry Coffee-Glazed Sierra Maple

Exteriors

The Legacy Rolls On

For more than fifty years, Winnebago Industries® has been creating the RVs and motor homes that have enabled people to live their dreams, see the country, visit friends and enjoy more time together as a family. The Adventurer® continues the Winnebago legacy of combining innovations, features and quality in a coach you'll be proud to call home.



Almond Pearl
FULL-BODY PAINT



Pearl Silver
FULL-BODY PAINT



Dark Sage
FULL-BODY PAINT



Amber Fire
FULL-BODY PAINT



THE MOST RECOGNIZED
NAME IN MOTOR HOMES™



Built by Winnebago Industries. Built to last.

Winnebago motor homes are built by Winnebago Industries, the company that defined motor homes. The company that built its reputation on quality construction. The company that transformed the motor home concept into a way of life.



Today, Winnebago Industries brings that reputation for quality and more than fifty years of RV innovation to the design and construction of every motor home. It's all a part of SuperStructure[®], our exclusive system of proprietary structural components that instills in each motor home improved strength and durability.

Solid Foundation Steel and aluminum truss work provides a solid, flat foundation for the floor and sidewalls. Our engineers enhance the handling and stability by taking special care to properly distribute the weight of all components.



Interlocking Joints The floor, sidewalls and roof are all integrally connected using interlocking joints. This ensures the Adventurer body is a cohesive unit with maximum strength and durability.

Attention to Detail Whether it's sending every Adventurer through a high-pressure water tunnel to check for leaks or labeling individual wires and barcoding parts to save time and frustration during service, Winnebago Industries considers every detail to ensure your Winnebago motor home provides you with years of pleasure.

Strong as Steel Key appliances and cabinetry are secured to a metal substructure for added stability and safety.

E-Coating Winnebago Industries employs an automotive-style dip tank process to apply an advanced electro-deposition coating on critical steel components for corrosion protection.

Thermo-Panel[®] Sidewalls Invented by Winnebago Industries, Thermo-Panel construction combines a fiberglass panel, high-density block-foam insulation and aluminum support structures to create some of the most long-lasting, lightweight sidewalls in the industry.



Winnebago 1-year-old fiberglass roof



Competitor's 1-year-old rubber roof

Fiberglass Roof The Adventurer features a crowned, one-piece fiberglass roof, backed with a 10-year limited parts-and-labor roof skin warranty. Fiberglass offers superior strength, attractiveness and durability over the rubber roofs found on many competitive models which can chalk, streak and degrade over time. Fiberglass also provides increased puncture and tear resistance.



GoWinnebago.com
Visit us on the web for more information on all of our motor homes, the latest product updates and a host of web-exclusive content.



Take a Tour We're proud of our process, state-of-the-art facilities and the people who make Winnebago Industries number one. We invite you to visit our complex in Forest City, Iowa, for a first-hand look at the dedication and technology behind every motor home we build.



Recognized Quality The Recreation Vehicle Dealer Association annually rates RV manufacturers and awards the Quality Circle Award to manufacturers that provide exceptional products, service and support. Winnebago Industries is proud to be the only manufacturer that has received this award every year since its inception.



Committed to Service We back our motor homes with the industry's best service after the sale:

- 12-month/15,000-mile basic limited warranty
- 36-month/36,000-mile warranty on structure
- 10-year standard limited parts-and-labor roof skin warranty
- Complimentary 24-hour roadside assistance program

- RV Technical Assistance Hotline
- RV Service Appointment Assistance
- Emergency Trip Interruption
- Emergency Message Service
- Nationwide Trip Routing
- Fee-Free Travelers Cheques



- TripSaver Fast Track Parts guarantees that in-stock warranty parts ship directly to your dealer within 24 hours
- National dealer service network



WIT Club Winnebago owners are like family. Joining the Winnebago-Itasca Travelers Club is a great way to meet and travel with other Winnebago enthusiasts. Members enjoy:

- Caravans and rallies
- Local and state group activities
- RV travel benefits

For Sales and Service Information Contact:



THE MOST RECOGNIZED
NAME IN MOTOR HOMES[™]

NYSE listing: WGO

Printed in USA

Seat belts are your most important hookup. Always buckle up.
© 2009 Winnebago Industries, Inc.