

WE'RE YOUR  
**LIGHT WEIGHT**  
SPECIALISTS

# Flagstaff

SUPER LITE TRAVEL TRAILERS, & FIFTH WHEELS,  
SUPER V, MICRO LITE AND SHAMROCK



Flagstaff

SUPER LITE TRAVEL TRAILERS,  
& FIFTH WHEELS, SUPER V,  
MICRO LITE AND SHAMROCK







## WE'RE BUILDING A LEGACY

### **FLAGSTAFF TRAVEL TRAILERS, FIFTH WHEELS AND CAMPING TRAILERS CONTINUE TO PROVIDE UNSURPASSED VALUE AND COMFORT.**

For over 25 years, Flagstaff has been committed to being the market's "light weight" specialist. With a focus on providing travel trailers to meet the weight requirements of the vehicles our customers own, we have built a legacy based on providing superior value and service while remaining in tune with our customer's needs. As a result, Flagstaff has become one of the most versatile product lines in the light weight trailer market, proudly showcasing more innovative floor plans, appealing features and refined interior appointments than any others in its class.



Flagstaff is committed to insuring that our customers enjoy their camping experiences. Through the utilization of our experienced work force, "state of the art" lamination facility and detailed production assembly processes our aim is to continue to provide our customers with the best built product possible at an unmatched value.





MONARCH / MAPLE

27BESS  
STANDARD DÉCOR

The Super Lite trailer's spacious interiors offer numerous windows, 80" vaulted ceilings with directional vented air conditioning and extensive interior LED lighting throughout. Rich with appointments like the flush mount Stonecast sink, a stove top with glass cover, 22" oven and distinctive Maple or Driftwood cabinets with solid wood doors and drawer fronts throughout add to the tremendous value provided.



Featuring an aluminum framed with vacuum bonded construction, high gloss fiberglass exterior and deluxe graphics, the Super Lite and Super V are among the best constructed, most well insulated trailers available on the market today.

## THE EMERALD PACKAGE. THE LEGACY CONTINUES.

To continue this tradition, Flagstaff Super Lites offer a group of appealing features to enhance the appearance of the Super Lite series. The Emerald package adds style and luxury as demonstrated in the picture of the 26VFKS on page 4 and the 27RLWS on page 6. This option package includes: Oyster colored fiberglass, Deep tinted frameless bonded windows, Slam latches on most storage doors exterior step lighting, aluminum wheels, upgraded slide fascia and solid surface Corian® kitchen counter tops.



EMERALD PACKAGE EXTERIOR



WINSLOW / DRIFTWOOD

27VRL  
STANDARD DÉCOR





WINSLOW / MAPLE



**26VFKS**  
EMERALD PACKAGE



FLAGSTAFF

# SUPER V

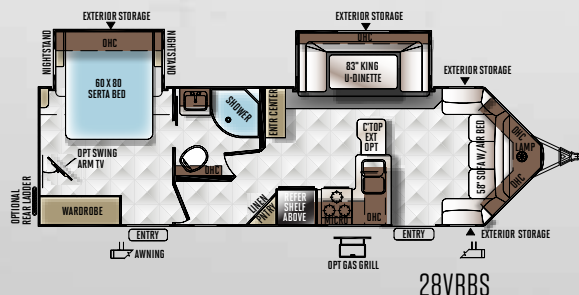
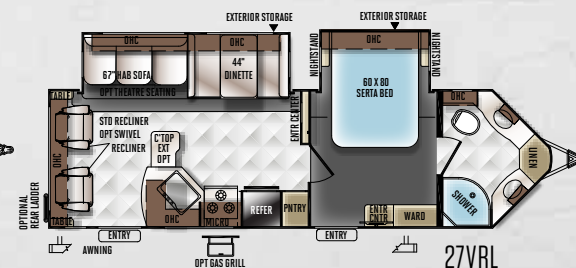
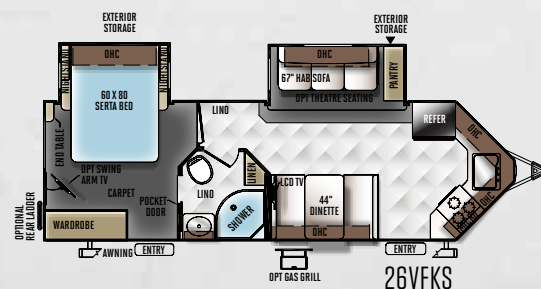
**SMALLER IN SIZE, BIG IN COMFORT.** The Super V models are a downsized "V" nose designed alternative to the Flagstaff V-Lite. These aerodynamic, six sided vacuum bonded trailers can be towed by a wide range of vehicles while offering "big time" features like bed rooms with walk around residential queen bed slides, fully equipped kitchens and generous storage space.



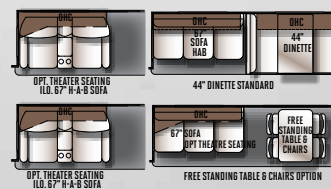
MODEL	26VFKS	27VRL	28VRBS
UNLOADED VEHICLE WEIGHT*	6200	6630	6404
BASE DRY HITCH WEIGHT	708	840	806
BASE DRY AXLE WEIGHT	5492	5790	5598
CARGO CAPACITY	1449	1551	1543
LENGTH (HITCH TO BUMPER)	29' 9"	31' 10"	31' 9"
WIDTH	96"	96"	96"
HEIGHT WITH A/C	132"	131"	132"
INTERIOR HEIGHT	80"	80"	80"
FRESH WATER CAPACITY	43 gal	43 gal	43 gal
GRAY WATER CAPACITY	73 gal	74 gal	37 gal
BLACK WATER CAPACITY	45 gal	37 gal	45 gal

The Unloaded Vehicle Weight (UVW) listed represents the weight of one trailer with that model's standard equipment including the content of specified Option Packages.

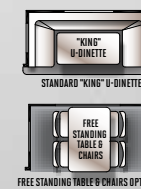
\* See back cover for further specification definitions.



## SUPER SLIDE OPTIONS



## DINETTE SLIDE OPTION







FLAGSTAFF

# SUPER LITE TRAVEL TRAILERS

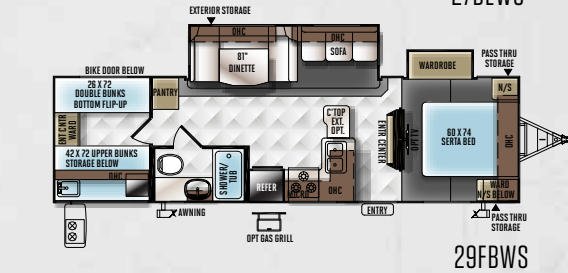
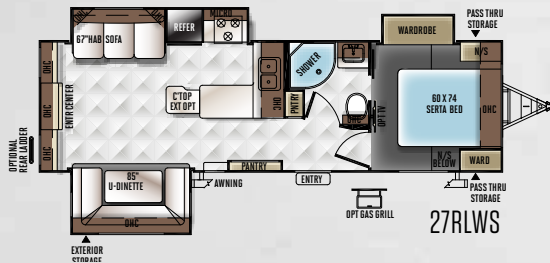
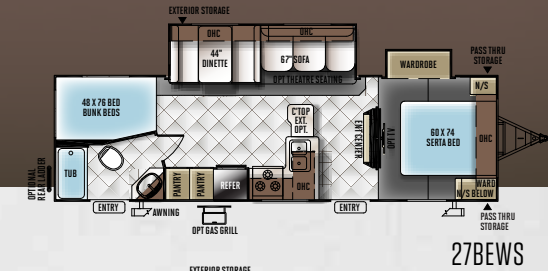
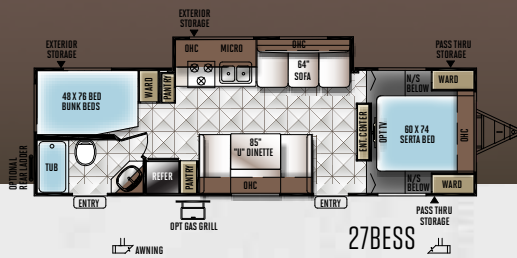
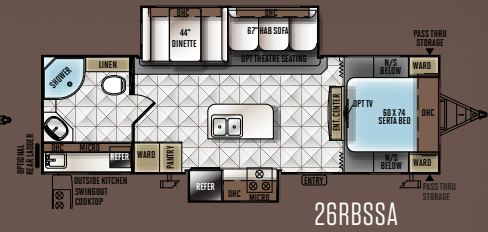
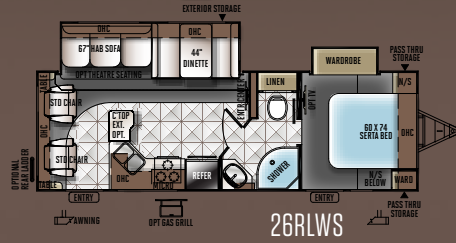
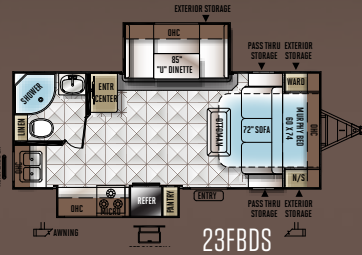
**THE FLOOR PLAN YOU WANT IN THE SIZE YOU NEED.** We have custom designed our trailers with the best in style and amenities while keeping your towing needs in mind. Quality craftsmanship and attention to detail have been put into our Super Lite trailers, all with you in mind. The fully equipped kitchens with comfortable dinettes and distinctive, spacious interiors are just a couple notable features.



WINSLOW / DRIFTWOOD

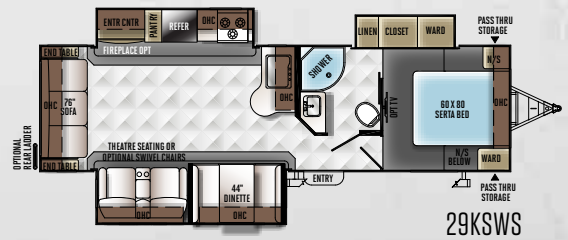
**27RLWS**  
EMERALD PACKAGE



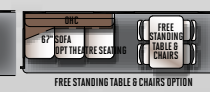
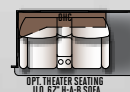


MODEL	23FBD5	26RLWS	26RBSSA	26FKWS	27BESS	27BEWS	27RLWS	29RKWS	29FBWS	29KSWS
UNLOADED VEHICLE WEIGHT*	5136	5816	6050	5817	5586	6250	6559	6631	6537	6872
BASE DRY HITCH WEIGHT	598	662	814	720	648	802	734	830	674	632
BASE DRY AXLE WEIGHT	4538	5154	5236	5097	4938	5448	5825	5801	5863	6240
CARGO CAPACITY	1403	1387	1505	1444	1403	1493	1516	1540	1478	1501
LENGTH (HITCH TO BUMPER)	25' 1"	29' 11"	31' 3"	29' 11"	32' 5"	32' 5"	32' 3"	33' 9"	33' 9"	33' 11"
WIDTH	96"	96"	96"	96"	96"	96"	96"	96"	96"	96"
HEIGHT WITH A/C	132"	132"	132"	132"	131"	132"	132"	131"	131"	132"
INTERIOR HEIGHT	80"	80"	80"	80"	80"	80"	80"	80"	80"	80"
FRESH WATER CAPACITY	43 gal	43 gal	43 gal	43 gal	43 gal	43 gal	43 gal	43 gal	43 gal	43 gal
GRAY WATER CAPACITY	37 gal	37 gal	74 gal	74 gal	37 gal	37 gal	37 gal	37 gal	37 gal	37 gal
BLACK WATER CAPACITY	37 gal	37 gal	37 gal	37 gal	37 gal	37 gal	37 gal	37 gal	37 gal	37 gal

The Unloaded Vehicle Weight (UJV) listed represents the weight of one trailer with that model's standard equipment including the content of specified Option Packages.  
 \* See back cover for further specification definitions.



#### SUPER SLIDE OPTIONS



#### DINETTE SLIDE OPTION





**MONARCH / DRIFTWOOD**

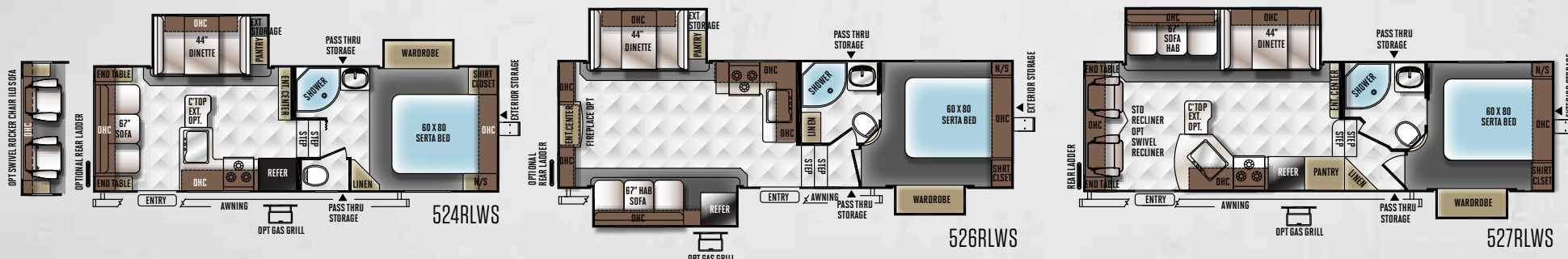
**526RLWS**  
STANDARD DÉCOR



## FLAGSTAFF

# SUPER LITE FIFTH WHEELS

**LIGHTEN YOUR LOAD AND RELAX IN COMFORT.** The Flagstaff Super Lite Fifth Wheel models provide light weight alternatives with a variety of floor plans, features and options for owners of 1/2 ton pick up trucks. Equipped with a standard Reese Revolution Hitch, you can tow with almost any size truck bed. Take a close look and you will see that our Super Lite fifth wheels have been custom designed with the best in styling and amenities while keeping your towing needs in mind.

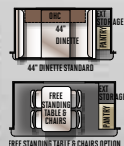


MODEL	524RLWS	526RLWS	527RLWS
UNLOADED VEHICLE WEIGHT*	6338	7244	7078
BASE DRY HITCH WEIGHT	1244	1300	1874
BASE DRY AXLE WEIGHT	5094	5944	5204
CARGO CAPACITY	1447	1497	1537
LENGTH (HITCH TO BUMPER)	27'	29' 8"	30' 1"
WIDTH	96"	96"	96"
HEIGHT WITH A/C	150"	150"	150"
FRESH WATER CAPACITY	43 gal	43 gal	43 gal
GRAY WATER CAPACITY	37 gal	37 gal	74 gal
BLACK WATER CAPACITY	37 gal	37 gal	37 gal

### SUPER SLIDE OPTIONS



### DINETTE SLIDE OPTION



With the Reese Revolution standard on all Flagstaff Fifth Wheel models, you can tow with almost any size truck bed and have more free space to carry your camping gear.

The Unloaded Vehicle Weight (UVW) listed represents the weight of one trailer with that model's standard equipment including the content of specified Option Packages.

\* See back cover for further specification definitions.



FLAGSTAFF

# SHAMROCKS

**THERE'S MORE TO THE SHAMROCK THAN BLIND LUCK.** Whether you are interested in the expanded interior space provided by the spacious drop down bunks with heated innerspring mattresses or the ability to bring an ATV along, the Flagstaff Shamrock will deliver with the quality and amenities you expect. Flagstaff has redefined camping by allowing you to have the necessities of residential living at the campsite.



MONARCH / MAPLE

23IKSS





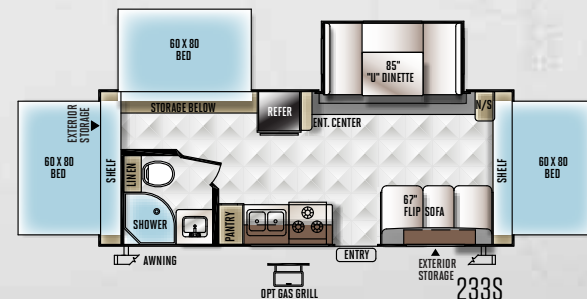
MODEL	17	183	19	21BD	21DK	21SS	21SSL	23IKSS	23WS	233S
UNLOADED VEHICLE WEIGHT *	3149	3824	3616	4706	3977	4630	5476	5311	4803	4748
BASE DRY HITCH WEIGHT	346	392	394	698	586	504	398	658	500	660
BASE DRY AXLE WEIGHT	2803	3432	3222	4008	3391	4126	5078	4653	4303	4088
CARGO CAPACITY	1197	930	1140	1454	1471	1436	1584	1309	1459	1474
LENGTH (HITCH TO BUMPER)	18' 9"	21' 3"	21' 3"	23' 11"	21' 9"	22' 10"	32' 2"	25' 3"	25' 2"	25' 3"
TRAILER LENGTH (OPEN)	23' 1"	25' 7"	25' 7"	27' 10"	26' 1"	27' 2"	36' 4"	29' 7"	29' 6"	29' 7"
WIDTH	96"	96"	96"	96"	96"	96"	96"	96"	96"	96"
HEIGHT WITH A/C	122"	123"	123"	129"	124"	129"	131"	132"	132"	129"
INTERIOR HEIGHT	80"	80"	80"	80"	80"	80"	80"	80"	80"	80"
FRESH WATER CAPACITY	43 gal	43 gal	43 gal	43 gal	43 gal	43 gal	43 gal	43 gal	43 gal	43 gal
GRAY WATER CAPACITY	30 gal	30 gal	30 gal	30 gal	30 gal	30 gal	30 gal	30 gal	30 gal	30 gal
BLACK WATER CAPACITY	30 gal	30 gal	30 gal	30 gal	30 gal	30 gal	30 gal	30 gal	30 gal	30 gal

The Unloaded Vehicle Weight (UVW) listed represents the weight of one trailer with that model's standard equipment including the content of specified Option Packages.  
 \* See back cover for further specification definitions.

#### FREE STANDING TABLE & CHAIRS OPTION



OPT FOR 21BD, 21SS, 21SSL, 23IKSS & 233S.



Sapphire Package Exteriors





## FLAGSTAFF

# MICRO LITES

**ALL YOU NEED IN A PERFECT, COMPACT PACKAGE.** Micro Lite trailers are excellent for those who want to move from the tent camper to the Light weight towable. The light, small compact design was created for families driving vans and small sport utility vehicles. With residential amenities and excellent features, you're sure to enjoy the Micro Lites.



CASHMERE / DRIFTWOOD

**19FBS**  
EMERALD PACKAGE





MONARCH / DRIFTWOOD

**25BHS**  
EMERALD PACKAGE



**THE BEST MICRO LITE TRAILER ON THE MARKET.** When towing size and weight are your focus. You will find that these specially designed Micro Lite models offer flexible floor plans that provide you with more comfort and amenities that you would expect all within the towing capacity of many of the smaller vehicles on the road today.

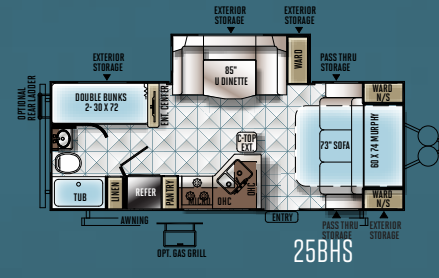
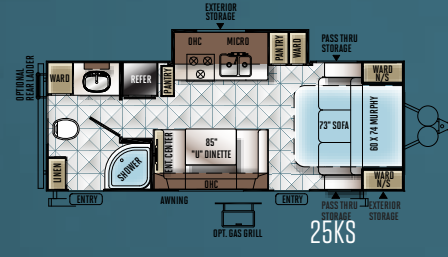
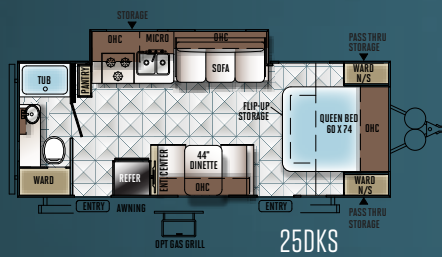
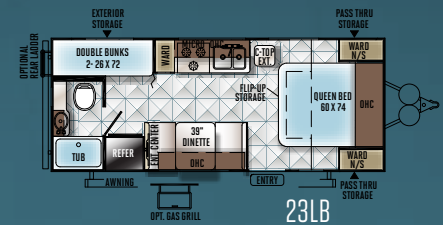
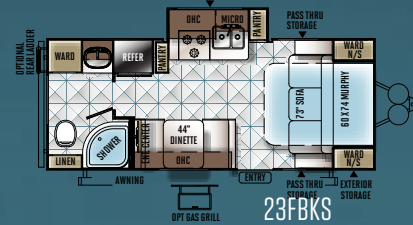
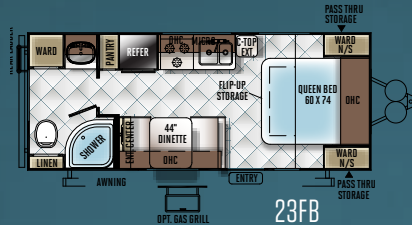
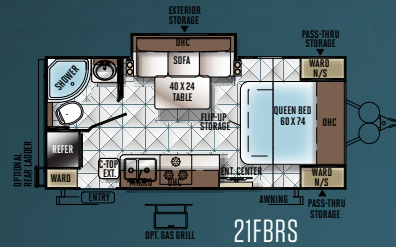
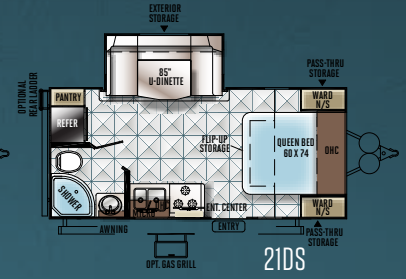
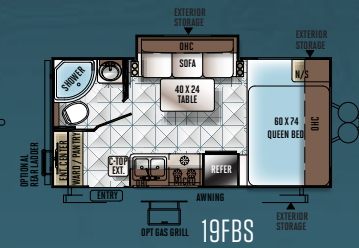
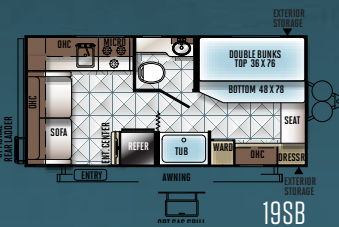
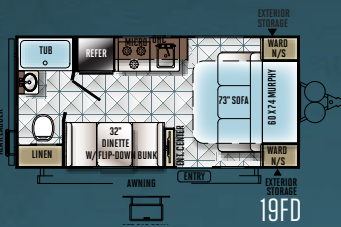


25BHS w/ Sapphire Package





19FBS w/ Standard Exterior



MURPHY BED  
OPTION: 21DS,  
23FB, 23LB

MODEL	19FD	19SB	19FBS	21DS	21FBS	23FB	23FBKS	23LB	25DKS	25KS	25BHS	25BKS	25FKS
UNLOADED VEHICLE WEIGHT*	3089	3091	3451	4091	3978	3905	4130	3831	4341	4455	4817	4404	4732
BASE DRY HITCH WEIGHT	397	386	462	536	456	585	576	516	527	625	512	529	560
BASE DRY AXLE WEIGHT	2692	2705	2989	3555	3522	3320	3554	3315	3814	3830	4305	3875	4172
CARGO CAPACITY	749	736	452	1186	1219	1421	1187	1426	1327	1311	836	1266	1469
LENGTH (HITCH TO BUMPER)	20' 4"	20' 4"	20' 4"	21' 7"	21' 7"	23' 7"	23' 7"	23' 7"	25' 7"	25' 7"	25' 9"	25' 7"	25' 9"
WIDTH	96"	96"	96"	96"	96"	96"	96"	96"	96"	96"	96"	96"	96"
HEIGHT WITH A/C	123"	123"	122"	130"	123"	123"	123"	123"	122"	123"	128"	124"	128"
INTERIOR HEIGHT	80"	80"	80"	80"	80"	80"	80"	80"	80"	80"	80"	80"	80"
FRESH WATER CAPACITY	43 gal	43 gal	43 gal	43 gal	43 gal	43 gal	43 gal	43 gal	43 gal	43 gal	43 gal	43 gal	43 gal
GRAY WATER CAPACITY	30 gal	30 gal	30 gal	30 gal	30 gal	30 gal	30 gal	30 gal	30 gal	30 gal	30 gal	30 gal	30 gal
BLACK WATER CAPACITY	30 gal	30 gal	30 gal	30 gal	30 gal	30 gal	30 gal	30 gal	30 gal	30 gal	30 gal	30 gal	30 gal

The Unloaded Vehicle Weight (UVW) listed represents the weight of one trailer with that model's standard equipment including the content of specified Option Packages.

\*See back cover for further specification definitions.

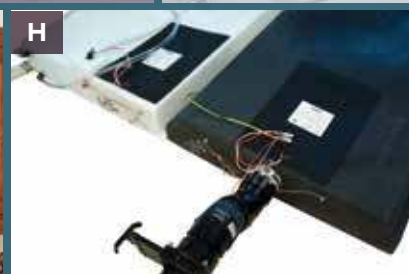
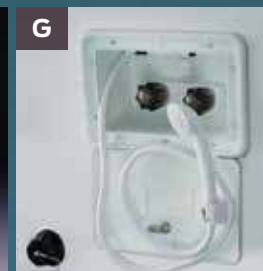




FLAGSTAFF

# POPULAR FEATURES

JUST A FEW FEATURES THAT MAKE US GREAT.



**A** Power Awning with Adjustable Rain Dump and LED Lighting (UL/UV: Std/Opt, ML and R: Opt.)

**B** Solar Panel Prep (Std. All Models) The Zamp 40 amp, portable solar panel shown is sold separately.)

**C** 32" LCD w/ 5.1 Dolby Speaker System with "Bluetooth" Technology. (Opt. UL/UV: Select Models)

**D** Rear Camera Prep. (Std. All Models) The Furion observation camera system with digital wireless technology is sold separately.

**E** Under mount Stonecast Kirchen Sinks (Std. in Most Models)

**F** Water Filtration System (Std. Opt.)

**G** Outside Shower (Std.)

**H** Heated holding tanks with 12 volt heat pads secured to the bottom (Opt.)

**I** Radius Glass Door Shower (N/A Models w/ Tub bases)

**J** Swivel Rocker Chair Fabric Matched to Sofa Shown w/ Cashmere Decor (Std. 26RLWS Only) (Opt. 524RLWS Only)

**K** Push Back Recliner Fabric Matched to Sofa Shown w/ Cashmere Decor (Std. 27VRL, 27BEWS) (N/A 26RLWS)

**L** Theatre seating fabric matched to sofa shown w/ Cashmere decor (Std. 29KWS)(Opt. 1LO Sofa 26VFKS, 27VRL, 26RLWS, 26RBSSA, 26FKWS, 27BEWS, 29FBWS, 526RLWS, 527RLWS)

**M** Deluxe Tri-Fold Sleeper Sofa w/ Comfortable Easy Set up Queen Bed (Std. 26VFKS, 27VRL, 28VRBS, 26RLWS, 26RBSSA, 26FKWS, 27BEWS, 27RLWS, 29RKWS, 29FBWS, 29KWS, 526RLWS, 527RLWS)(Opt. 21SS/21SSL, 23IKSS)



FLAGSTAFF

# QUALITY CONSTRUCTION

JUST A FEW FEATURES THAT MAKE US GREAT.

Quality built trailers always bring the same results: long-lasting products you can depend on to enjoy with your family year after year. These are some of our highlights.



- 1 Glued and screwed wood cabinetry
- 2 Aluminum dinette frames for added strength and weight savings
- 3 Vacuum-bonded floor with 16" on center aluminum floor joists (Std. Super Lite, select Roo models)
- 4 Extra large dinette storage doors and full extension metal drawer guides in the kitchen
- 5 Dexter Torflex Axles:
  - Independent wheel suspension and self-damping action
  - Rubber cushioning eliminates metal-to-metal contact.
  - Forged torsion arm for maximum strengthModels are also equipped with E-Z Lube® System and Nev-R-Adjust® Brakes.
- 6 Enclosed underbelly protects trailer components as well as increasing aerodynamics (Super Lite models only)
- 7 Aluminum Frame Construction with fiberglass exterior shown with Emerald Package and deluxe graphics



## ROOF CONSTRUCTION



Vacuum-bonded radius roof with vaulted ceiling providing superior insulation and more interior height.



4" thick roof with built in insulated A/C ducts



Built strong to enable you to conveniently perform periodic roof maintenance.

## WALL STRENGTH



Structurally engineered materials makes our vacuum-bonded walls some of the strongest in the industry.

## VACUUM-BONDED LAMINATED CONSTRUCTION



Flagstaff is one of the few manufacturers that is a fully **6 sided vacuum-bonded trailer**. Our walls, floors, roof, fronts and backs are all aluminum framed and vacuum-bonded to ensure a light weight strong structural trailer.



# STANDARDS & OPTIONS

STANDARDS & OPTIONS ARE SUBJECT TO CHANGE.

MODELS	SV	STT	SFW	S	ML	MODELS	SV	STT	SFW	S	ML	MODELS	SV	STT	SFW	S	ML
<b>INTERIOR FEATURES</b>						Mini Blinds	S	S	S	--	--	Under Mount Double Bowl Stonecast Kitchen Sink w/					
Driftwood Interior	S	S	S	S	S	Night Shades	--	--	--	0	0	Residential Style Faucet (N/A 19FD, 19SB)	S	S	S	S	S*
Maple(w/ Solid Maple Glaze Finished Cabinet Doors) Interior	0	0	0	0	0	Day/Night Shades	0	0	0	--	--	Residential One-Piece Sink Cover	S	S	S	S	S
Upgraded Decorative Slide Out Fascia	EP	EP	EP	--	--	Push Back Recliner Fabric Matched to Sofa (Std. 27VFRL, 527RLWS)	S*	--	S*	--	--	Cutting Board	S	S	S	S	S
Solid Wood and Raised Panel Doors and Drawers	S	S	S	S	S	Swivel Rocker Chair (26RLWS Only; Opt. 524RLWS ILO Rear Sofa)	--	S*	0*	--	--	Kitchen Cabinet Mounted Fold Down Shelf (23FB, 23LB Only)	--	--	--	--	S*
Screwed and Glued Wood Cabinetry	S	S	S	S	S	Swivel Rocker Recliners ILO Push Back Chairs (Opt. 27VFRL, 527RLWS Only)	0*	--	0*	--	--	Counter Top Extension (Std. 29KSWs) (Available 27VFRL, 28VRBS, 26RLWS, 27BEWS, 27RLWS, 29FBWS, 524RLWS, 527RLWS, 25BHDS)	0*	0*	0*	--	0*
Residential Full Extension Metal Drawer Guides	S	S	S	S	S	Swivel Rocker Recliners ILO Chaise Lounge (Opt. 29RKWS Only)	--	0*	--	--	--	Water-Pur Filtration System	SO	SO	SO	SO	SO
Flooring: Carpet and an Engineered Mold and Mildew Resistant Floor Covering (21SS, 21SSL, 23IKSS, 233S)												Tub Surround	S	S	S	S	S
Engineered Mold and Mildew Resistant Floor Covering	S	S	S	S*	S							Radius Glass Door Shower	S*	S*	S*	S*	S*
Minimum Carpet	0	0	0	--	--	Theater Seating (Std. 29KSWs, Opt. 26VFKS, 27VFRL, 26RLWS, 26RBSSA, 26FKWS, 27BEWS, 29FBSS, 526RLWS, 527RLWS)	0*	S*/0*	0*	--	--	Bathroom Skylight	S	S	S	S	S
Ducted Furnace	--	--	--	S	S							110 DSI Gas/Electric Six Gallon "Quick Recovery"					
Floor Ducted Furnace	S	S	S	--	--	Theater Seating ILO Chaise Lounge (Opt. 29RKWS Only)	--	0*	--	--	--	Water Heater w/ Interior Gas and Electric Switches	SO	SO	SO	SO	SO
13,500 BTU Ducted Air (N/A 19FBS, 19FD, 19SB, 17, 183, 19)	SO	SO	SO	SO*	SO*	Deluxe Tri-Fold Sleeper Sofa (Std. 26VFKS, 27VFRL, 27VRBS, 26RLWS, 26RBSSA, 26FKWS, 27BEWS, 27RLWS, 29RKWS, 29FBWS, 29KSWs, 526RLWS, 527RLWS) (Opt. 21SS/21SSL, 23IKSS)	S*	S*	S*	0*	--	Water Heater By-Pass Kit	S	S	S	S	S
15,000 BTU A/C	0	0	0	0	0	Aluminum Bed and Dinette Frames	S	S	S	S	S	Foot Flush Toilets	S	S	S	S	S
13,500 Roof A/C (Std. 17, 183, 19)(Opt. 19FBS, 19FD, 19SB)	--	--	--	SO*	SO*	44" Family Dinette (N/A 21DS, 25BHDS, 25FKS, 23FBDS, 27BESS, 27RLWS, 27VRBS, 29FBWS, 21DK, 233S)	S*	S*	S*	S*	0*/S*	Maxxair® Ventilation Fan and Vent Cover	SO	SO	SO	SO	SO
Fireplace (27RLWS, 29KSWs, 526RLWS, 527RLWS Only)	--	0	0	--	--							Extra Maxxair® Ventilation Fan and Vent Cover	0	0	0	S	0
Carbon Monoxide Detector	SO	SO	SO	SO	SO	48" X 84" Spacious King-U-Style Dinette (Std. 21DS, 25BHDS, 25FKS, 23FBDS, 27BESS, 27RLWS, 27VRBS, 29FBWS, 21BD, 21DK, 233S)	S*	S*	S*	S*	S*	Murphy Bed w/ Under Sofa Storage System and Outside Access for Unmatched Floor Plan Flexibility (Std. 23FBDS, 23FBKS, 25KS, 25BHDS, 25BHKS, 19FD)(Opt. 21DS, 23FB, 23LB)	--	S*	--	--	0*/S*
12 Volt Power Plug Hook-up	S	S	S	S	S							Murphy Bed w/ Dinette for Unmatched Floor Plan Flexibility (Opt. 25BHKS)	--	--	--	--	0*
CSA	0	0	0	0	0	Free Standing High Pressure Laminated Table with Swing Level Legs (Swing Level Legs N/A 19FBS, 19FD, 19SB, 21FBRS, 23FB, 23FBKS, 23LB, 25DKS, 25BHKS, 250GS)	S	S	S	S	S*	Heated Mattress	0	0	0	SO	SO
Monitor Panel Switch Station	S	S	S	S	S	Free Standing Table and Chairs (N/A 26VFKS, 27BESS, 17, 183, 19, 21DK, 23WS, All Micro Lite Models)	0*	0*	0*	0*	--	Serta Upgrade Mattress All Walk Around Beds	S	S	S	--	--
55 Amp Converter With Charger	S	S	S	S	S	Stainless Steel Appliances	0	0	0	0	0						
Battery Disconnect Switch	S	S	S	S	S	Raised Refrigerator Panels	0	0	0	0	0						
Solar Panel Prep	S	S	S	S	S	Single Door Auto Gas/Elec. Refrigerator (19FBS, 19FD, 19SB, 17, 183, 19 Only)	--	--	--	S*	S*						
Recessed Ceiling LED 12 Volt Interior Lighting	S	S	S	S	S	Double Door Auto Gas/Elec. Large Refrigerator (N/A 19FD, 19SB, 19FBS)	S	S	S	S	S*						
Bunk Fan/Light Combination with Each Bed	--	--	--	S	--	3 Burner High Output Gas Range w/ Glass Stove Top Cover	S	S	S	S	S						
Mounted 24" LCD TV (Opt. 19FBS, 19FD, 19SB)	SO	SO	SO	SO	SO*	Gas Oven (Required 21DK, 23IKSS, 23FBKS, 25DKS, 25KS, 25BHKS)(Included w/ OP6: 19FBS, 19FD, 19SB)	SO	SO	SO	0*	0*						
Bedroom Mounted 24" LCD TV (Opt. All UL Models Except 23FBDS, ML: 25BHKS Bunk Room, R: 23IKSS, 233S Only)	0*	0*	0*	0*	0*	Microwave Oven	SO	SO	SO	SO	SO						
32" LCD TV w/ 5.1 Digital Dolby Surround Sound Speaker (Std. 27RLWS 29KSWs, 26RLWS, 24RLWS, 27RLWS)	--	S*	S*	--	--	Solid Surface Corian Counter Tops in Kitchen	EP	EP	EP	--	--						
Optional 32" LCD TV w/ 5.1 Digital Dolby Surround Sound Speaker System (26VFKS, 27VRL, 28VRBS, 27BEWS, 23FBDS, 26RBSSA, 27BESS, 29RKWS, 29BHWS)	0	0*	--	--	--												
Digital AM/FM/CD/DVD w/ Remote	S	S	S	S	S												
MP3 Player Hook-Up	S	S	S	S	S												
Decorative Valances	--	--	--	S	S												
Designer Valances w/ Lambrequin Arms	S	S	S	--	--												
												<b>EXTERIOR FEATURES</b>					
												Fully Laminated Aluminum Frame (Floor, Sidewall, & Roof)	S	S	S	S	S
												Insulation Factors R-7 Side Wall, R-12 Floor and R-14 Ceiling	S	S	S	S	S
												Radius Roofs w/ Interior Vaulted Ceilings	S	S	S	S	S
												Vinyl / Rubber Composite Roofing Membrane	S	S	S	S	S
												T V Antenna w/ Cable & Satellite Hook-Up	S	S	S	S	S*
												Rear Observation Camera Prep w/ Molded Mounting Plate	S	S	S	S	S
												Laminated Oyster Colored Fiberglass Sidewalls	EP/SP	EP/SP	EP/SP	SP	SP
												Laminated Fiberglass Sidewalls	S	S	S	S	S
												Distinctive Black Exterior Trim	S	S	S	S	S
												Electric Slide-Out (All Slide Out Models)	S	S	S	S	S
												Lower Front Diamond Plate Panel	--	--	--	--	S
												Decorative Frame Skirting (21DS, 25BHDS, 25FKS Only)	S	S	S	S*	S*



MODELS	SV	STT	SFW	S	ML
Easy to Reach Lockable Bed Latch System	--	--	--	S	--
Bed Cable System (No Poles)	--	--	--	S	--
Rear Ladder	0	0	0	--	0
Bike Rack Ladder Attachment	0	0	0	0	0
Power Awning With Adjustable Rain Dump and LED Lighting	SO	SO	SO	0	0
Awning (Opt: 19FD, 19FBS, 19SB)	--	--	--	SO	SO*
Awning Slide Topper	0	0	0	0	0
Entrance/Screen Door	--	--	--	S	S
30" Primary Entrance/Screen Door	S	S	S	--	--
Large Assist Grab Handles	SO	SO	SO	S	S
Lighted Entry Step and Scare Light	EP	EP	EP	--	--
Radius Corner Windows and Doors	S	S	S	S	S
Windows w/ Tinted Safety Glass	SO	SO	SO	SO	SO
Tinted Bonded Frameless Windows	EP/SP	EP/SP	EP/SP	SP	SP
Thermopane Windows	0	0	0	0	0
Large Dinette Picture Window (N/A 19FD, 19SB, 25BHKs)	S	S	S	S	S*
Outside Grill Prep	S	S	S	S	S
Outside Gas Grill and Worktable (Opt: 19FBS, 19FD, 19SB)	SO	SO	SO	0	SO*
Outside Speakers	SO	SO	SO	SO	SO
Outside Shower	S	S	S	S	S
1/2 Sliding Storage Tray (N/A 19FD, 19SB, 23FB and All Models w/ Murphy Bed) (Opt. 23FBDS, 17, 183, 19, 21SS, 21SSL, 23IKSS)	0*	0*	--	0*	0*
Outside Antifreeze Stations	S	S	S	S	S
Front Outside "Trunk" Storage Separated From Heated Pass Thru Storage Compartments	--	--	S	--	--
Slam Latches on Both Side Pass Thru Storage Doors & Front Compartment Door	--	--	EP	--	--
Slam Latches on Storage Doors	EP	EP	EP	--	--
Two-20 Lb Gas Bottles (19FD, 19SB, 19FBS Only)	--	--	--	S	S*
Two-30 Lb Gas Bottles	S	S	S	--	S*
Enclosed Gas Bottles w/ Storage Door Access	S	--	S	--	--
Molded Bottle Cover	--	S	--	S	S
Surface Coated Steel I-Beam Frame (N/A 19FBS, 19FD, 19SB)	S	S	S	S	S*
Reese Revolution Hitch	--	--	S	--	--
8' X 8' Front Storage Deck: 1300 LBS. Max Capacity (21SSL Only)	--	--	--	S*	--
2' X 8' Front Storage Deck W/ Enclosed Storage: Compartment: 350 LBS. Max Capacity (21BD Only)	--	--	--	S*	--
Fuel Station with 18 Gallon Capacity (Gasoline Only) (Opt. 21SSL Only)	--	--	--	0	--
Toylok Mounted Locking System (21BD, 21SSL Only)	--	--	--	S*	--

MODELS	SV	STT	SFW	S	ML
Power Front Landing Jacks	--	--	S	--	--
Power Tongue Jack	0	0	--	0	0
Stabilizer Jacks	S	S	S	S	S
Power Stabilizer Jacks (Fifth Wheels: Rear Jacks only)	0	0	0	--	--
Torsion Axle, Rubber-Ryde Suspension	S	S	S	S	S
Easy Lube Axles and Nev-R Adjust Brakes	S	S	S	S	S
15" Radial Tires w/ Nitro Fill	S	S	S	--	--
Radial Tires w/ Nitro Fill (19FB, 19SB, 19FBS, 17 Sham. w/ Single Axle)	--	--	--	S	S
Double or Triple Entry Step	S	S	S	S	S
Off Road Package (Includes: 15" Off Road Tires and Aluminum Wheels) (21SSL Only)	--	--	--	S*	--
Chrome-look Wheel Covers	0	0	0	0	0
Aluminum Wheels	0/EP/SP	0/EP/SP	0/EP/SP	0/SP	0/SP
Spare Tire Carrier & Cover	SO	SO	SO	0	SO
Electronically Controlled Heated Holding Tanks	0	0	0	0	0
Enclosed Holding Tanks	S	S	S	--	--
Black Water Flush	S	S	S	S	S
<b>EMERALD PACKAGE INCLUDES:</b>	0	0	0	--	--
Oyster Colored Fiberglass					
Deep Tinted Frameless Bonded Windows					
Slam Latches on Storage Doors					
Exterior Step and "Scare" Light					
Aluminum Wheels					
Solid Surface Corian Kitchen Counter top					
Upgraded Slide Fascia					
<b>SAPPHIRE PACKAGE INCLUDES:</b>	0	0	0	0	0
Oyster Colored Fiberglass					
Deep Tinted Frameless Bonded Windows					
Aluminum Wheels					
<b>CONVENIENCE PKG. B INCLUDES:</b>	SO	SO	SO	--	--
13,500 BTU Ducted Air					
Mounted 24" LCD TV w/ AM/FM Stereo, CD, DVD Player					
Gas Oven					
Microwave Oven					
110 DSI Gas/Electric Six Gallon "Quick Recovery" Water Heater					

MODELS	SV	STT	SFW	S	ML
Power Awning w/ LED Lighting					
Large Assist Grab Handle					
Windows w/ Tinted Safety Glass					
Outside Grill and Worktable					
Spare Tire Carrier & Cover					
Outside Speakers					
<b>CONVENIENCE PACKAGE C INCLUDES:</b>	--	--	--	SO	--
13,500 BTU Roof A/C (17, 183, 19)					
13,500 BTU Ducted Air (21BD, 21DK, 21SS, 21SSL, 23IKSS, 23WS, 233S)					
Mounted 24" LCD TV w/ TV Antenna & Cable Hook-up					
Microwave Oven					
110 DSI Gas/Electric Six Gallon "Quick Recovery" Water Heater					
Awning					
Windows w/ Tinted Safety Glass					
Outside Speakers					
<b>OPTION PKG. G INCLUDES: (19FBS, 19FD, 19SB ONLY)</b>	--	--	--	--	SO*
Gas Oven					
Microwave Oven					
110 DSI Gas/Electric Six Gallon "Quick Recovery" Water Heater					
TV Antenna w/ Cable & Satellite Hook-up					
Spare Tire Carrier & Cover					
Outside Speakers					
<b>CONVENIENCE PKG. A INCLUDES: (N/A 19FBS, 19FD, 19SB)</b>	--	--	--	--	SO*
13,500 BTU Ducted Air					
Mounted 24" LCD TV w/ AM/FM Stereo, CD, DVD Player					
Microwave Oven					
110 DSI Gas/Electric Six Gallon "Quick Recovery" Water Heater					
Awning					
Windows w/ Tinted Safety Glass					
Outside Grill and Worktable					
Outside Speakers					
Spare Tire Carrier & Cover					

SV = SUPER V, STT = SUPER LITE TRAVEL TRAILER, SFW = SUPER LITE FIFTH WHEEL, S = SHAMROCK, M = MICRO LITE

S = STANDARD, SO = STANDARD OPTION, 0 = OPTIONAL, -- NOT AVAILABLE, EP = EMERALD PACKAGE, SP = SAPPHIRE PACKAGE, \* = SELECTED MODELS





#### PRE-DELIVERY INSPECTION FACILITY

20,000 square feet of quality assurance. The bare essentials for a premium product. This state-of-the-art facility gives immediate daily feedback to production for quality assurance in every unit built.



Forest River, Inc. encourages our customers to purchase their Forest River products from a local dealership whenever possible for the following reasons:

- 1) Forest River, Inc. dealers are independently owned and operated businesses so priority service and scheduling is at their discretion and is often provided to customers that purchased their unit at that dealership.
- 2) Purchasing locally allows customers to establish meaningful relationships with a dealer, enhancing the RV experience through assistance with product questions, user tips or RV regulations for your state or country, and much more!
- 3) Canadian customers must meet requirements to bring an RV purchased out of the country to their home. These requirements may involve additional inspections and certifications, taxes and fees. Your local Canadian Dealer is a professional at meeting these requirements.
- 4) Scheduling timely warranty repairs and adjustments through a local dealership provides far greater flexibility and convenience to you, the customer!

It is the goal of Forest River, Inc. that all of our RV owners fully enjoy the RV experience and that customer satisfaction meets or exceeds their expectations!

#### 24/7 EMERGENCY ROADSIDE ASSISTANCE

For a worry-free ownership experience

Forest River includes one

year of Coach-Net RV Technical & Roadside Assistance with each RV purchase. Whether new to the RV lifestyle or an experienced RV enthusiast, Forest River owners have 24/7 access to technical, operational and emergency road service coverage throughout the US & Canada. Coach-Net's fast, dependable service is just a phone call away.

**Coach-Net®**  
RV Technical & Roadside Assistance

#### Specification Definitions

**GVWR (Gross Vehicle Weight Rating)** - is the maximum permissible weight of the unit when fully loaded. It includes all weights, inclusive of all fluids, cargo, optional equipment and accessories. For safety and product performance do NOT exceed the GVWR.

**GAWR (Gross Axle Weight Rating)** - is the maximum permissible weight, including cargo, fluids, optional equipment and accessories that can be safely supported by a combination of all axles.

**UVW (Unloaded Vehicle Weight)** - is the typical weight of the unit as manufactured at the factory. It includes all weight at the unit's axle(s) and tongue or pin and LP Gas. The UVW does not include cargo, fresh potable water, additional optional equipment or dealer installed accessories.

\*Estimated average based on standard build optional equipment.

**CCC (Cargo Carrying Capacity)\*\*** - is the amount of weight available for fresh potable water, cargo, additional optional equipment and accessories. CCC is equal to GVWR minus UVW. Available CCC should accommodate fresh potable water (8.3 lbs per gallon). Before filling the fresh water tank, empty the black and gray tanks to provide for more cargo capacity.

\*\* Estimated average based on standard build optional equipment

Each Forest River RV is weighed at the manufacturing facility prior to shipping. A label identifying the unloaded vehicle weight of the actual unit and the cargo carrying capacity is applied to every Forest River RV prior to leaving our facilities.

The load capacity of your unit is designated by weight, not by volume, so you cannot necessarily use all available space when loading your unit.



LOOK FOR OUR OTHER POPULAR LINES OF FLAGSTAFF CAMPING TRAILERS.



MAC, SE, Classic, High Wall & Hard Side Camping Trailers.



V-Lite, Classic Super Lite TT & FW

#### FLAGSTAFF

# WARRANTY

**FOR DETAILS ON FLAGSTAFF'S COMPLETE WARRANTY PROGRAM, SEE YOUR FLAGSTAFF DEALER.** When it comes to backing products with the same quality and commitment it does when it begins the manufacturing process, the only name you have to remember when you're looking for a recreational vehicle is Flagstaff. Flagstaff offers the following additional limited warranties to the original purchasers. Consult written warranty for details.

1. Twelve-year vinyl roof warranty,
2. Two-year fiberglass warranty,
3. Five-year axle warranty,
4. Five-year tent warranty,
5. One-year bumper to bumper warranty,
6. Available second-year warranty



#### Learn More

Scan this barcode using a QR Reader on your smart phone to learn more about Forest River.



A Berkshire Hathaway company.

201 WEST ELM MILLERSBURG, IN 46543 WWW.FORESTRIVERINC.COM/ROCKWOOD 574.642.2640

YOUR FLAGSTAFF DEALER

All information contained in this brochure is believed to be accurate at the time of publication. However, during the model year, it may be necessary to make revisions and Forest River, Inc., reserves the right to make all such changes without notice, including prices, colors, materials, equipment and specifications as well as the addition of new models and the discontinuance of models shown in this brochure. Therefore, please consult with your Forest River, Inc., dealer and confirm the existence of any materials, design or specifications that are material to your purchase decision. Litho. U.S.A P / W: 2015.09.17