



Entrada

M-CLASS MOTORHOMES



Entrada
M-CLASS MOTORHOMES

EastToWestRv.com/Entrada-M-Class

A DIVISION OF FOREST RIVER





PRE-DELIVERY INSPECTION FACILITY

20,000 square feet of quality assurance. The bare essentials for a premium product. This state-of-the-art facility gives immediate daily feedback to production for quality assurance in every unit built.



24/7 EMERGENCY ROADSIDE ASSISTANCE WITH VEHICLE PURCHASE*

TOWING	WINCH-OUT
JUMP-STARTS	MOBILE MECHANIC
TIRE CHANGES	TECHNICAL
FLUID DELIVERY	SUPPORT
LOCKOUT	DEALER LOCATOR
SERVICE	SERVICES



*VALID FOR 1 YEAR FROM DATE OF PURCHASE

FREE MEMBERSHIP to Forest River Owners' Group

www.forestriverfrog.com



Learn More
Scan this barcode using a QR Reader on your smart phone to learn more about Forest River.



A Berkshire Hathaway company.

GVWR (Gross Vehicle Weight Rating) - is the maximum permissible weight of the unit when fully loaded. It includes all weights, inclusive of all fluids, cargo, optional equipment and accessories. For safety and product performance do NOT exceed the GVWR.

GAWR (Gross Axle Weight Rating) - is the maximum permissible weight, including cargo, fluids, optional equipment and accessories that can be safely supported by a combination of all axles.

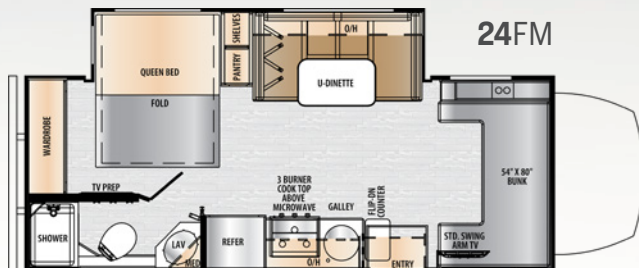
UVW (Unloaded Vehicle Weight)* - is the typical weight of the unit as manufactured at the factory. It includes all weight at the unit's axle(s) and tongue or pin and LP Gas. The UVW does not include cargo, fresh potable water, additional optional equipment or dealer installed accessories.

*Estimated average based on standard build optional equipment.

CCC (Cargo Carrying Capacity)** - is the amount of weight available for fresh potable water, cargo, additional optional equipment and accessories. CCC is equal to GVWR minus UVW. Available CCC should accommodate fresh potable water (8.3 lbs per gallon). Before filling the fresh water tank, empty the black and gray tanks to provide for more cargo capacity.

** Estimated average based on standard build optional equipment

Each Forest River RV is weighed at the manufacturing facility prior to shipping. A label identifying the unloaded vehicle weight of the actual unit and the cargo carrying capacity is applied to every Forest River RV prior to leaving our facilities. The load capacity of your unit is designated by weight, not by volume, so you cannot necessarily use all available space when loading your unit.



Entrada M-Class Standards & Options

Entrada Top Features

- ▶ Azdel Composite Sidewall Construction
- ▶ One-Piece Seamless Fiberglass Frontcap
- ▶ Slide Out Awning Toppers
- ▶ Arctic Package
- ▶ 12V TV
- ▶ XL Dinette Storage Drawers
- ▶ Convection Microwave
- ▶ 10.7 cu/ft 12V Refrigerator
- ▶ Backup and Sideview Camera System w/ Monitor
- ▶ Integrated Mercedes' Smart Dash w/ Voice Command
- ▶ Power & Heated Seats
- ▶ Driver & Passenger Swivel Seats Standard
- ▶ Maxx Air Fan w/ Remote & Rain Sensor
- ▶ 4000 Watt Propane Generator
- ▶ 15K Main AC
- ▶ Dicor DiFlex II TPO Roof Membrane
- ▶ 12V USB Charge Ports
- ▶ 7' Interior Height

Entrada Value Package

- ▶ 12V TV
- ▶ 10.7 cu/ft 12V Refrigerator
- ▶ Convection Microwave
- ▶ One Piece Molded Fiberglass Front Cap
- ▶ Power Awning w/ LED Light Strip
- ▶ Backup & Sideview Camera System w/ Monitor
- ▶ 4200lb Hitch
- ▶ 1.5" Thick Sidewalls w/ Azdel Composite Exterior
- ▶ Crane Gold Exterior Sidewall Finish
- ▶ 12V Tank Heaters
- ▶ Winegard Air 360+ Antenna w/ Integrated WiFi Prep
- ▶ Black Tank Flush
- ▶ Exterior LP Quick Connect
- ▶ Flush Floor Main Floor Construction
- ▶ RotoCast Exterior Storage Compartments

Entrada M-Class Options

- ▶ 4pt Hydraulic Leveling System
- ▶ Solar Charge System

Mercedes' Sprinter 3500 Chassis Key Features

- ▶ 3.0L V-6 Turbo Diesel
- ▶ Automatic 7G-Tronic Transmission
- ▶ Active Brake Assist
- ▶ Attention Assist
- ▶ Active Distance Assist
- ▶ Traffic Sign Assist
- ▶ Voice Command Steering Wheel Integration
- ▶ Mercedes' Navigation System

Entrada Solar Overview

Gain more camping flexibility with your 12V power systems. Keeps your 12V house batteries at a healthy charge to extend battery life, increase performance, and save money!

- ▶ 200 watt Monocrystalline Solar Panel
- ▶ 30-amp Charge Controller w/ LED Display
- ▶ (2) 12V Battery Installed in Step Well

24RL | COMING SOON

	24FM	24RL
Engine	Mercedes	Mercedes
Wheel Base	170 1/2"	TBD
GVWR(lbs.)	11030	TBD
GAWR Front (lbs.)	4080	TBD
GAWR Rear (lbs.)	7720	TBD
GAWR Total(lbs.)	11800	TBD
UVW(lbs.)	9617	TBD
GCWR(lbs.)	15250	TBD
CCC (lbs.)	1166	TBD
Fuel Capacity (gal.)	26.4	TBD
Hitch Rating	4200	TBD
Tongue Weight	500	TBD
Length (Bumper to Bumper)	25' 7"	TBD
Exterior Height (w/ A/C)	11' 3"	TBD
Exterior Width	94 1/2"	TBD
Interior Width	91"	TBD
Interior Height	81"	TBD
Interior Square Footage	255	TBD
Exterior Storage Capacity (Cu. Ft.)	26	TBD
Fresh Water (gal.)	35	TBD
Grey Holding Tank Capacity (gal.)	32	TBD
Black Holding Tank Capacity (gal.)	32	TBD
L.P. Capacity (gal.)	19.3	TBD
Awning Length	15' 6"	TBD
Water Heater Capacity (gal.)	6	TBD

CUSTOMER SATISFACTION



www.ForestRiverBuyLocal.com



All information contained in this brochure is believed to be accurate at the time of publication. However, during the model year, it may be necessary to make revisions and Forest River, Inc., reserves the right to make all such changes without notice, including prices, colors, materials, equipment and specifications as well as the addition of new models and the discontinuance of models shown in this brochure. Therefore, please consult with your Forest River dealer and confirm the existence of any materials, design or specifications that are material to your purchase decision. Litho. U.S.A. FOR 2024 P&W: 2022.11.22

WWW.EASTTOWEST.COM/ENTRADA

YOUR ENTRADA DEALER