

SUNOVA[®]

{ 2010 }



 **ITASCA**



What Are Your Dreams?

Have you imagined yourself embarking on new adventures? Do you crave the freedom to travel from city to city, coast to coast in comfort and style? The open road is calling your name and it's ready for excitement. The time for dreaming is over. The time for doing is now. Make your motor home dream a reality and do it without breaking the bank in your very own Itasca Sunova®.

The Itasca Difference Itasca motor homes are built on our exclusive SuperStructure® foundation creating some of the industry's strongest, most durable motor homes. Quality components, precision manufacturing and attention to the smallest details—such as running every coach through our high-pressure leak test—all go into making Itasca motor homes simply the best.



SUNOVA

Exteriors

Choose from the deluxe graphics packages or upgrade to one of four full-body paint options and stand out from the crowd.

Metallic Gold
{ DELUXE GRAPHICS }



Red Candy
{ DELUXE GRAPHICS }



Silver Plum
{ FULL-BODY PAINT }



Sedona
{ FULL-BODY PAINT }



Silver Cloud
{ FULL-BODY PAINT }



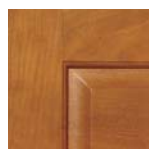
Pewter
{ FULL-BODY PAINT }



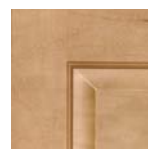
Interior Décor

Three fabric collections and four cabinet woods let you personalize your Sunova. Available UltraLeather™ fabric provides a soft, stylish alternative that is easier to clean and maintain than leather.

Honey Cherry



Belmont Maple



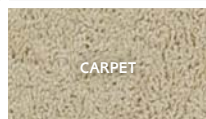
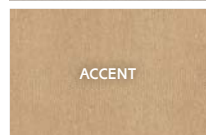
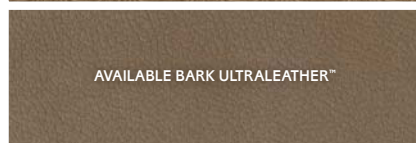
Forest Cherry



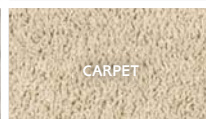
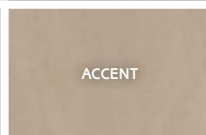
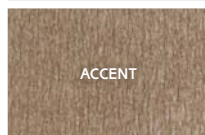
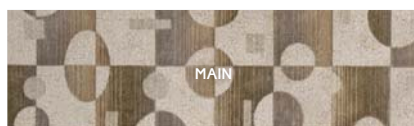
Coffee-Glazed Sierra Maple



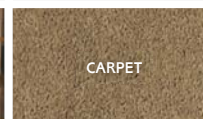
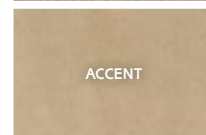
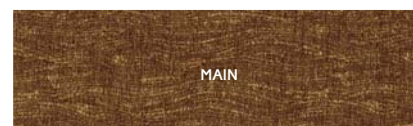
Boardwalk



Silver Fir



Fossil





SMARTSPACE™

Welcome to the Class A Lifestyle

When the Sunova was first introduced, it quickly made a name for itself by delivering Class A comfort at a great value. This year's lineup brings even more style, more value and more choices with available full-body paint, available UltraLeather and the option to have two LCD TVs in the lounge of the 31E. Each floorplan is loaded with SmartSpace™ design elements that make the most of every inch. One example is the BenchMark® dinette with innerspring cushions that flip up for convenient storage access. It quickly converts into a bed and can be upgraded with the Dream Dinette™ table that adjusts easily with just one hand. Find yourself in a 2010 Itasca Sunova and make your Class A dreams come true.



BenchMark



Lounge & Kitchen Amenities

- 32" LCD TV (33C & 35J)
- 19" LCD TV (37L)
- 40" LCD TV (31E & 37L)
- CD/DVD player
- Available Comfort Sofa Sleeper
- Full-extension drawer slides

All Are Invited

You and your guests will quickly feel at home in your Sunova, thanks to the beautiful cabinetry and comfortable furniture, such as the available Euro chair and ottoman (NA 37L). You'll also enjoy the ease and convenience of the available Comfort Sofa Sleeper with a mattress that inflates at the flip of a switch for overnight guests. For your enjoyment, the dash stereo doubles as a CD/DVD player for the overhead entertainment center. It even includes a front video jack so you can connect your video camera and watch home movies. Add the available inverter and you can enjoy all your entertainment amenities when generator or shoreline power is not available.

Prepare your favorite meals in a complete kitchen that includes a three-burner range, microwave oven, available conventional oven, or available microwave/convection oven. Plentiful storage with full-extension drawer slides holds all your kitchen utensils. An available interior upgrade package includes a kitchen backsplash, sink covers and the Dream Dinette table that easily adjusts up or down with one hand.

Comfort Sofa Sleeper

This 2-in-1 sofa redefines comfort and convenience.

- 1) By day it's a plush sofa.
- 2) A hidden drawer stores bed linens.
- 3) It converts easily into a bed.
- 4) The mattress inflates and deflates with an automatic pump.

1)



2)



3)



4)



A Better Night's Sleep Awaits

A generous rear slideout creates a comfortable and inviting bedroom. A queen-size bed on the 31E and 33C and a king-size bed on the 35J and 37L (optional 33C) provide a great night's rest. A 19" LCD TV is available, which incorporates an easy-access connection point in the wall if you want to connect a DVD player. Kids will love the bunk beds in the 35J that can be enhanced with DVD players in each bunk.

Bed & Bath Amenities

- Underbed storage
- Available 19" LCD TV
- DVD cable-ready
- Bathroom skylight
- Textured glass shower door

More Enjoyment The available exterior entertainment center includes AM/FM stereo, CD player and a removable table (NA 37L). The available sideview cameras activate with the turn signal for added confidence while maneuvering.



More Features There is abundant exterior storage on the Sunova in the StoreMore™ storage compartments that extend with the slideroom for easy access (NA 37L).





The only manufacturer to have received the RVDA Quality Circle Award for exceptional products, service and support for 13 consecutive years



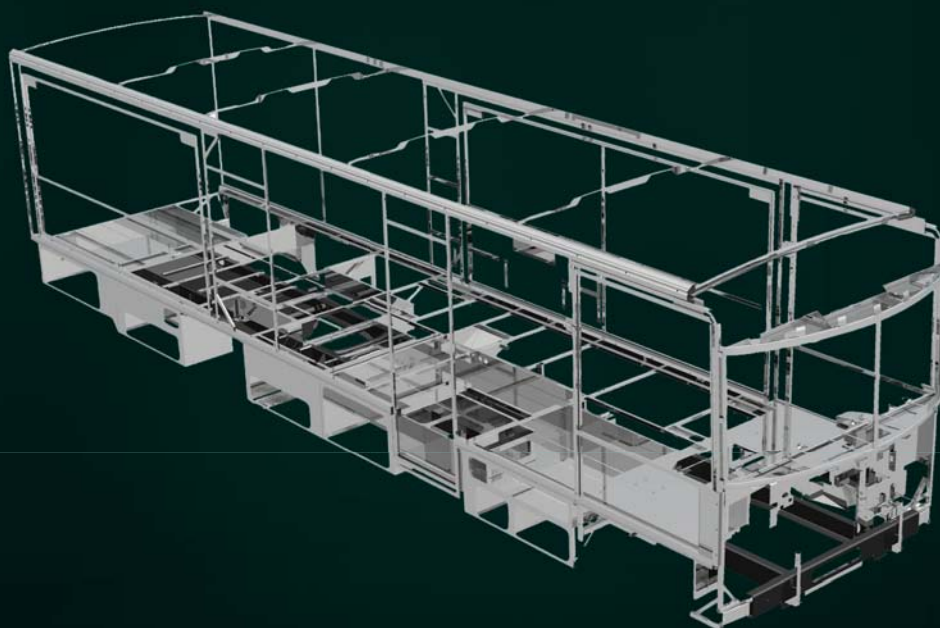
Spend Time in the Great Outdoors

No matter where you travel, you'll have plenty of shade when you select the available patio awning. It offers an excellent complement to the four available full-body paint offerings. Tow up to 5,000-pounds® with the standard hitch and ease your way into the campsite using the available power mirrors with defrost as your guide. Leveling the coach is fast and easy with the available hydraulic jack controls in the cab, by the entrance door and in the service bay that let you watch as the jacks lower onto the jack pads. Portable power is provided by the 5,500-watt Cummins Onan® Marquis Gold™ generator so you can enjoy the available exterior entertainment center when no shoreline source is available.

**SUPER
STRUCTURE**

SuperStructure Legendary strength and durability are the result of SuperStructure construction that goes into every Itasca motor home. It's the combination of quality, proprietary components and careful attention to detail that makes Itasca motor homes the cream of the crop.

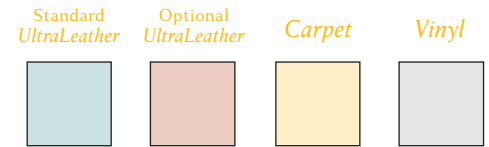
- Patented Thermo-Panel™ sidewalls are durable and lightweight.
- Specially engineered interlocking joints connect the floor, sidewalls and roof together for strength and durability.
- An automotive-style dip tank applies an advanced electrodeposition coating that protects critical steel components.
- The crowned, one-piece fiberglass roof is backed by a 10-year limited parts-and-labor roof skin warranty.



- 12-month/15,000-mile basic limited warranty
- 36-month/36,000-mile warranty on structure
- Standard 10-year limited parts-and-labor roof skin warranty
- Complimentary 24-hour roadside assistance program
 - RV Technical Assistance Hotline
 - Emergency Trip Interruption
 - Nationwide Trip Routing
 - RV Service Appointment Assistance
 - Emergency Message Service
 - Fee-Free Travelers Cheques

Floorplans & Specifications

Dimensions shown are for sleeping space only and may vary due to styling differences. Dashed lines denote overhead storage areas. Floorplans and specifications are also available online at Goltasca.com.



Weights & Measures

	31E	33C	35J	37L
Length	32'7"	34'3"	35'7"	38'3"
Exterior Height ¹	12'3"	12'3"	12'3" ^A /12'5" ^{B, D, F}	12'5"
Exterior Width ²	8'5"	8'5"	8'5"	8'5"
Exterior Storage ³ (cu. ft.)	85.9	88.3	92.8	108
Awning Length - Front/Rear	18'	19'	14'	11'6"/17'
Interior Height	6'8"	6'8"	6'8"	6'8"
Interior Width	8'	8'	8'	8'
Freshwater Capacity w/Heater ⁴ (gal.)	84	86	75	94
Holding Tank Capacity - Black/Gray ⁴ (gal.)	38/44	39/59	44/48	50/44
LP Capacity ⁵ (gal.)	18	18	18	18
Fuel Capacity (gal.)	75 ^{A, C} /40 ^E	75 ^{A, C} /40 ^E	75 ^{A, B, D} /40 ^F	75 ^{B, D} /40 ^F
GCWR ⁶ (lbs.)	26,000	26,000	26,000	26,000
GVWR (lbs.)	22,000 ^{A, C} /20,500 ^E	22,000 ^{A, C} /20,500 ^E	22,000	22,000
GAWR - Front (lbs.)	7,500	7,500	7,500 ^{A, B} /8,500 ^{D, F}	7,500 ^B /8,500 ^{D, F}
GAWR - Rear (lbs.)	15,000 ^A /14,500 ^C / 13,500 ^E	15,000 ^A /14,500 ^C / 13,500 ^E	15,000	15,000
Wheelbase	208"	220"	228"	248"

A Ford F53 Chassis w/19.5" Tires

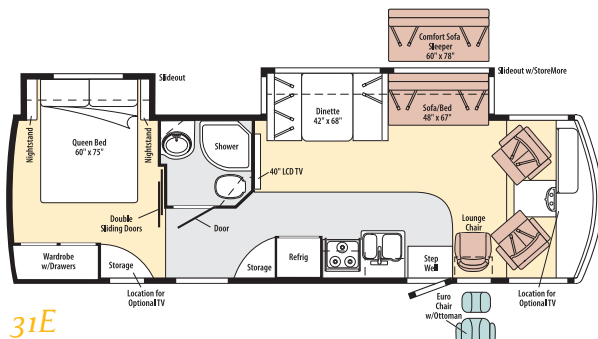
B Ford F53 Chassis w/22.5" Tires

C Workhorse™ W22 Chassis w/19.5" Tires

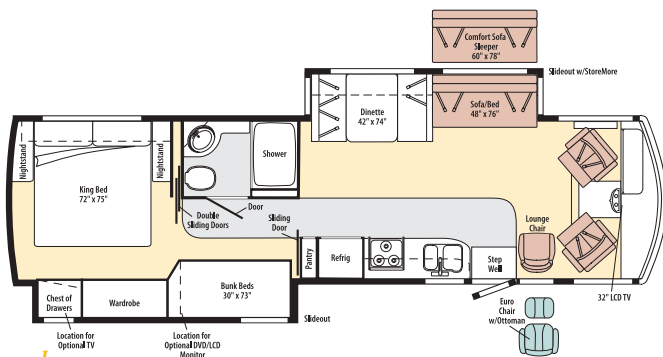
D Workhorse W22 Chassis w/22.5" Tires

E Workhorse W20 Diesel Chassis w/19.5" Tires

F Workhorse W20 Diesel Chassis w/22.5" Tires



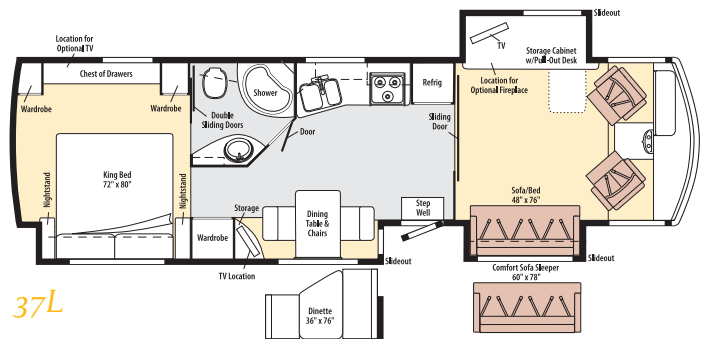
31E



35J



33C
(NEW)



37L

Chassis

Ford® F53 Chassis <ul style="list-style-type: none">• 362-hp 6.8L Super Duty V10 SEFI Triton® engine• TorqShift™ 5-speed automatic transmission• Hydraulic brakes• 4-wheel ABS• 175-amp. alternator			
7-pin trailer wiring			
Trailer Hitch: 5,000-lb. drawbar/500-lb. maximum vertical tongue weight			
Stainless steel wheel liners (w/19.5" tires)			
Stylized aluminum wheels (w/22.5" tires)			

31E	33C	35J	37L	Optional Equipment
o	o	o	o	Automatic hydraulic leveling jacks w/3-position controls
o	o	o	o	Workhorse™ Chassis <ul style="list-style-type: none">• 340-hp 8.1L GM 8100 Vortec™ engine• Allison® 1000 MH 6-speed automatic transmission w/overdrive• Hydraulic brakes w/ABS• 145-amp. alternator
o	o	o	o	Workhorse Diesel Chassis <ul style="list-style-type: none">• 230-hp V8 Navistar® MaxxForce® diesel engine• Allison 1000 MH 6-speed automatic transmission w/overdrive• Hydraulic brakes w/ABS• 145-amp. alternator

Cab Conveniences

Cab Seats: armrests, lumbar support and multi-adjustable slide/recline/swivel			
Stereo System: AM/FM, CD/DVD, alarm clock, weather band, front input jack and remote			
Chassis/house battery radio power switch			
Convenience tray w/cup holders			
Power assist steering w/tilt wheel			
Cruise control			
Exterior adjustable mirrors			
Map lights			
Sunvisors			
12-volt powerpoint			
C.B. wire prep			
Cab wraparound curtain			

31E	33C	35J	37L	Optional Equipment
o	o	o	o	Rearview monitor system w/one-way audio
o	o	o	o	Sideview camera monitor system (requires rearview monitor system)
o	o	o	o	Defroster fans
o	o	o	o	Power mirrors w/defrost
o	o	o	o	6-way power driver seat

Interior

19" LCD TV (37L)			
32" LCD TV (33C & 35J)			
40" LCD TV (31E & 37L)			
Amplified digital TV antenna			
Satellite system ready			
Key-activated slideroom master lock switch			
Mini blinds (lounge, dinette and kitchen)			
Pleated shades (bedroom)			
OnePlace® systems center			
Tinted windows			
Roof vent (lounge)			
Powered roof vent (bath)			

31E	33C	35J	37L	Optional Equipment
o	o	o	o	Electric fireplace
o	o	o	o	19" LCD TV
o	o	o	o	26" LCD TV
o	o	o	o	Dining table/buffet/40" LCD TV
o	o	o	o	Interior Upgrade Package: galley backsplash, Dream Dinette™ dining table, range cover, galley sink covers, refrigerator inserts, 2 throw pillows, single-control lavatory faucet

o	o	o	o	Day/night pleated shades (lounge, dinette and bedroom)
o	o	o	o	Tinted, dual-glazed, thermo-insulated windows
o	o	o	o	Vinyl floor covering (front to bedroom; cab area and slideouts carpeted)
o	o	o	o	Satellite dish antenna
o	o	o	o	Powered ventilator fan (lounge)

Kitchen

Laminate countertops			
Flip-up countertop extension (31E & 35J)			
2-door refrigerator/freezer			
Microwave oven			
3-burner range top w/storage below			
Vented range hood			

31E	33C	35J	37L	Optional Equipment
o	o	o	o	Microwave/convection oven
o	o	o	o	Large-capacity 2-door refrigerator/freezer w/ice maker and water filter
o	o	o	o	3-burner range w/oven

Bath

Laminate countertop			
Shower w/wall surround			
Flexible showerhead			
Textured glass shower door			
Skylight			

Bedroom

Innerspring mattress			
Bedspread, pillows and shams			
Bunk beds w/foam mattresses, mattress covers, pillows, shams and privacy curtains (35J)			

31E	33C	35J	37L	Optional Equipment
o	o	o	o	2 DVD players w/headphones, 8.5" LCD monitors (bunk area)
o	o	o	o	19" LCD TV, cable-ready for a DVD player

Exterior

KeyOne™ lock system			
Porch light			
Automatic entrance door steps			
Lighted storage compartments			
Front mud flaps			
Main entrance w/screen door			
Premium smooth high-gloss skin			

31E	33C	35J	37L	Optional Equipment
o	o	o	o	Acrylic patio awning w/metal wrap (31E & 35J vinyl w/deluxe graphics)
o	o	o	o	Second acrylic patio awning w/metal wrap
o	o	o	o	Entertainment Center: AM/FM stereo, CD player, remote, speakers, lockable compartment and removable table (NA 37L)
o	o	o	o	Ladder
o	o	o	o	Lower front protective mask (w/full-body paint)

Heating and Cooling System

Two high-efficiency roof air conditioners w/energy management system			
35,000 BTU low-profile furnace (31E & 33C)			
40,000 BTU low-profile furnace (35J & 37L)			

31E	33C	35J	37L	Optional Equipment
o	o	o	o	Two high-efficiency air conditioners w/heat pumps

Electrical System w/QuickPort®

AC/DC electrical distribution system, 45-amp. converter/charger w/remote			
30-amp. power cord			
5,500-watt Cummins Onan® Marquis Gold™ gas generator			
2 deep-cycle, Group 31 batteries			
Chassis and coach battery disconnect systems			
PowerLine® energy management system			
Automatic dual battery charge control			
Auxiliary start circuit			

31E	33C	35J	37L	Optional Equipment
o	o	o	o	50-amp. power cord, automatic shoreline/generator changeover switch
o	o	o	o	300-watt inverter
o	o	o	o	600-watt inverter
o	o	o	o	5,500-watt Cummins Onan Marquis Gold LP generator (requires diesel chassis option)

Plumbing System w/QuickPort

Service Center: color-coded labels, cable TV input, pressurized city water hook-up w/diverter valve, 3" drainage valves, portable satellite dish hook-up, power cord, 10' sewer hose			
6-gallon LP water heater			
LP tank			
On-demand water pump			
TrueLevel™ holding-tank monitoring system			
Winterization Package: water heater bypass valve and siphon tube			
Heated holding-tank compartment			

31E	33C	35J	37L	Optional Equipment
o	o	o	o	Exterior wash station w/pump switch
o	o	o	o	6-gallon 110-volt/LP water heater w/motoraid auto heater

Safety

Seat belts			
Child seat tether anchor in forward-facing dinette seat (NA 33C & 37L)			
LP, smoke and carbon monoxide detectors			
10 BC fire extinguisher			
Ground fault interrupter			
High-mount brake lamp			

Warranty⁷

12-month/15,000-mile basic warranty⁸			
36-month/36,000-mile limited warranty on structure⁸			
10-year limited parts and labor warranty on roof skin⁸			

o Optional
NA Not Available

1 The height of each model is measured to the top of the tallest standard feature and is based on the curb weight of a typically equipped unit. The actual height of your vehicle may vary by several inches depending on chassis or equipment variations. Please contact your dealer for further information.

2 Sunova floorplans feature a wide-body design – over 96" In making your purchase decision, you should be aware that some states restrict access on some or all state roads to 96" in body width. Before making your purchase decision, you should confirm the road usage laws in the states of interest to you.

3 The load capacity of your motor home is designated by weight, not by volume, so you cannot necessarily use all available space when loading your motor home.

4 Capacities are based on measurements prior to tank installation. Slight capacity variations can result due to installation applications.

5 Capacities shown are tank manufacturer's listed water capacity (W.C.) Actual filled LP capacity is 80% of listing due to overfilling prevention device on tank.

6 Actual towing capacity is dependent upon your particular loading and towing circumstances, which includes the GVWR, GAWR and GCWR as well as adequate trailer brakes. Please refer to the Operator's Manual of your vehicle for further towing information.

7 See separate chassis warranty details provided in Owner's Manual.

8 See your dealer for complete warranty information.

Not all items available in combination. See dealer for details.

Winnebago Industries™ continuing program of product improvement makes specifications, equipment, model availability and prices subject to change without notice. Comparisons to other motor homes are based on the most recent information available at printing.

Discover More on the Web

Want to see more of the Itasca Sunova? You'll find more pictures, in-depth info, floorplans and complete specs at **Goltasca.com**. You'll also see videos and highlights of key features, such as:

BenchMark®

3 position controls
FOR HYDRAULIC JACKS

TRUE LEVEL

SMARTSPACE

QuickPort

POWERLINE®

SMART STORAGE

ONE PLACE®

**SUPER
STRUCTURE**

STOREMORE®



THE MOST RECOGNIZED
NAME IN MOTOR HOMES™

Goltasca.com

NYSE: WGO



Join the Itasca Family

Itasca owners simply have more fun. When you buy a Sunova, you can become a part of the Winnebago-Itasca Travelers Club. As a member, you'll meet other motor home enthusiasts, travel to interesting places with interesting people, and be the first to learn about new Itasca products. See what the WIT Club is all about at **WITclub.com**.



Seat belts are your most important hookup. Always buckle up.



©2009 Winnebago Industries, Inc.
Printed in USA

- Join the WIT Club
- Caravans and rallies
- Local and state activities
- RV travel and benefits

For Sales and Service Information Contact: