

Jayco | 2024 White Hawk Travel Trailer

# WHITE HAWK

LIGHTWEIGHT LUXURY



**2+3**  
YEAR YEAR  
WARRANTY

# INTERIOR DESIGN



## VINTAGE FARMHOUSE



Main Wood



Accent Wood



Floor



Countertop



Main Fabric



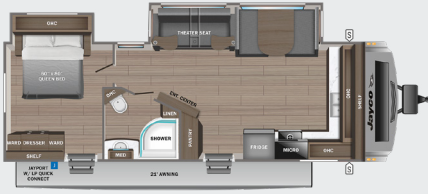
Accent Fabric



# WHITE HAWK

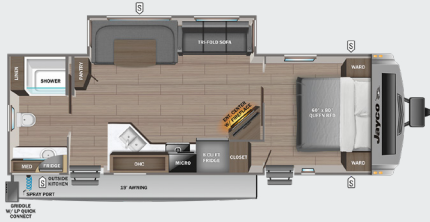
26FK

OPTIONS: C, D



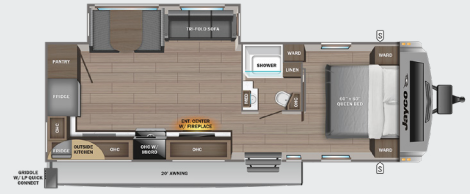
27RB

OPTIONS: A, B, C, D



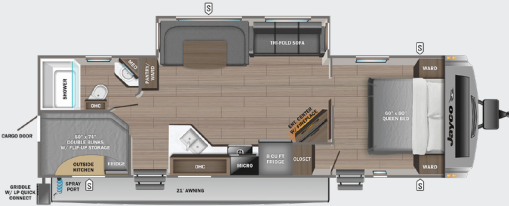
27RK

OPTIONS: A, B, C, D



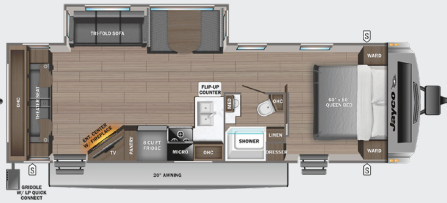
29BH

OPTIONS: A, B, C, D



29RL

OPTIONS: B, C, D



32BH

OPTIONS: A, B, C, D



32QBH

OPTIONS: A, B, C, D



32RL

OPTIONS: B, C, D



- STORAGE
- MICRO MICROWAVE
- OHC OVERHEAD CABINETS
- FRIDGE REFRIGERATOR
- WARD WARDROBE

## OPTIONS

- A** Theater Sofa
- B** King Bed
- C** Table & Chairs
- D** Table, Chairs & Ottoman

# STANDARDS & OPTIONS

## EXTERIOR

- 1.5 in. fresh water drain valve
- 2 in. Stronghold VBL™ floor with 2 lb. density foam Aerodynamic, rounded front profile with aluminum framing
- American-made frame with integrated A-frame Automotive-style aluminum rims
- Battery quick-disconnect
- Black tank flush
- Bumper-mount bracket for 17 in. griddle (select models)
- Detachable power cord
- Exterior TV bracket with 120V and cable hook-ups
- Factory installed rear roof ladder
- Galvanized steel and impact resistant wheel wells
- Inverter pre-wire (2 bedroom nightstand outlets, main TV and outlet for outside kitchen fridge)
- Keyed-Alike™ locking system
- Magnum Truss™ Roof System with limited lifetime warranty
- Marine grade exterior speakers with blue LED accent lighting
- Modern graphics package with dual-colored sidewall
- Mounted camera bracket for pre-wired side and rear back-up prep
- Outdoor camp kitchen with galvanized steel bases (select models)
- Outside shower (only on models without outside camp kitchen)
- Rock Solid Stabilizer System
- Slam latches on front pass-through storage doors
- Spare tire with cover
- Stronghold VBL™ walls with double-sided Azdel composite (sidewalls, rear walls and slide out boxes)
- Swing-out entry door assist handle

## INTERIOR

- 4 in. high-density dinette cushions with vinyl backing
- 4 in. Teddy Bear soft-touch bunk mats (select models)
- 60 x 80 in. residential queen beds (60 x 76 in. in Murphy bed models)
- 75 lb. full extension drawer guides
- Barreled interior ceiling up to 81 in. of interior height
- Bathroom skylight
- Decorative backsplash
- Decorative roller shades with reflective barrier
- Directional and closeable A/C vents
- Electric fireplace
- Gas-strutted under bed storage (most models)
- Handcrafted, hardwood door/drawer fronts
- Hidden-hinged cabinet doors
- High output auto-ignition propane gas furnace
- LED lighting throughout
- Plywood dinette, bed, bunk and shower/tub bases
- Powered roof vents in bathroom and main bedroom (most models)
- Residential style kitchen countertops
- Residential vinyl flooring throughout
- Screwed and glued cabinet stiles
- USB charging ports (multiple locations throughout)

## CUSTOMER VALUE PACKAGE (MANDATORY)

- 15,000 BTU roof-mounted A/C
- 30 lb. propane gas bottles with auto-regulator and ABS cover
- 39 or 50 in. Smart LED TV
- 55 gallon fresh water tank
- AM/FM/Bluetooth® stereo with roof-mounted speakers
- American-made nitro-filled Goodyear® radial tires with self-adjusting electric brakes

- Bathroom skylight
- Max-length power awning with LED light
- Microwave
- On-Demand 60,000 BTU water heater
- Oven with 3-burner recessed cooktop with glass cover
- Porcelain foot flush toilet
- Power tongue jack
- Showers with solid glass enclosures

## LUXURY PACKAGE (MANDATORY)

- Climate Shield™ 0-100° tested weather insulation package
- Dark tinted, frameless safety glass windows
- Dual-hinge 10 cu. ft. 12V fridge
- Front molded fiberglass cap with automotive-style windshield and blue LED accent light strips
- Kitchen skylight with shade
- LCI Solid Step fold-down aluminum tread steps on main entry door
- MAXXAIR® power roof vent (main living area)
- Overlander 1 Solar Package: (1) 200W solar panel and 30-amp digital controller

## OPTIONS

- 120V heated tank pads
- 17 in. outside griddle (select models)
- 2nd 15,000 BTU direct-dump AC in bedroom
- 50-amp service with 2nd A/C prep
- 72 x 80 in. king bed in place of 60 x 80 in. queen bed (excludes 26FK)
- JAYCOMMAND® Smart RV System with TPMS
- Overlander 2 Solar Package: (2) 200W solar panels, 30-amp digital controller and 1,800W inverter
- Power stabilizer jacks

\*Indicates split tanks

FLOORPLAN	TOTAL EXTERIOR LENGTH	EXTERIOR WIDTH	EXTERIOR HEIGHT (WITH A/C)	INTERIOR HEIGHT	UNLOADED VEHICLE WEIGHT	DRY HITCH WEIGHT	GVWR	CARGO CARRYING CAPACITY	FRESH WATER CAPACITY	GRAY WASTE WATER CAPACITY	BLACK WASTE WATER CAPACITY	SLEEPING CAPACITY
26FK	32' 1"	8' 0"	11' 3"	6' 9"	6,820	745	8,400	1,580	55	61*	30.5	2-3
27RB	32' 10"	8' 0"	11' 4"	6' 10"	6,750	770	8,000	1,250	56	61*	30.5	3-5
27RK	32' 10"	8' 0"	11' 3"	6' 10"	6,590	890	8,000	1,500	55	61*	30.5	3-5
29BH	34' 9"	8' 0"	10' 5"	6' 9"	6,865	815	8,500	1,635	55	61*	30.5	7-9
29RL	35' 9"	8' 0"	11' 3"	6' 9"	6,930	820	8,500	1,570	55	61*	30.5	4-6
32BH	38' 0"	8' 0"	11' 4"	6' 9"	8,140	965	9,500	1,360	56	71*	61*	7-9
32QBH	38' 0"	8' 0"	11' 3"	6' 9"	8,200	1,035	9,750	1,550	55	57	30.5	8-10
32RL	36' 10"	8' 0"	11' 2"	6' 9"	7,530	765	9,000	1,470	55	71*	30.5	3-5

Meet your Jayco Dealer



Scan QR code for specification definitions

Some specs at the time of print may include estimates. For the most updated information, please visit [Jayco.com](http://Jayco.com)

Jayco, Inc. | P.O. Box 460 | Middlebury, IN 46540

See dealer for further information and prices. All information in this brochure and on [www.jayco.com](http://www.jayco.com) is the latest available at the time of publication approval. Jayco reserves the right to make changes and to discontinue models without notice or obligation. Photography may show optional equipment or props used for decoration purposes only. RVs built for sale in Canada may differ to conform to Canadian codes. JAYCO and the JAYCO BIRD IN FLIGHT are registered trademarks of Jayco, Inc. Printed in USA 3/24 ©2024 Jayco, Inc.



Jayco - Part of Jayco Family of Companies