

BOUNDER®

BOUNDER®



2016
CLASS A GAS



Bounder is ready for your next adventure.



BOUNDER 35K SHOWN IN GLISTENING SLATE DÉCOR WITH BARCELONA WOOD CABINERY



With the freedom of the open road stretched out before you, the possibilities seem endless. Bounder will see to it your dreams become reality as it offers all the modern conveniences and comforts you deserve.

New Interior 2016 Design Features

- Ergonomic Dash Design w/Integrated Camera & A/V Monitors and Modern Finish
- Fiberglass Molded Engine Shroud Cover w/Cockpit Cup Holders
- Co-Pilot Integrated Dash Workstation & Large Center Console Storage Drawer

OPTIONAL

- Hide-A-Loft™ P2K™ Front Overhead Power Loft w/500lb Capacity
- French Door-Style Refrigerator w/2,000 Watt Inverter & 2 Additional Batteries
- LX Package

2016 Graphics and Décor



AUTUMN BREEZE



CARAMEL KISS



CHOCOLATE MALT



GLISTENING SLATE



WINTER HAVEN

Both inside and out, there is a wide selection of colors, styles and finishes. From the moment you lay your eyes on a Bounder, the high-style graphics and décor collection welcome you with gracious beauty and contemporary design. We've paid attention to every detail. So wherever you are, you'll feel right at home.

CHOCOLATE MALT

SOFA	ACCENT	BEDSPREAD	COUNTERTOP	FLOORING	CARPET

GLISTENING SLATE

SOFA	ACCENT	BEDSPREAD	COUNTERTOP	FLOORING	CARPET

WINTER HAVEN

SOFA	ACCENT	BEDSPREAD	COUNTERTOP	FLOORING	CARPET

CABINETRY

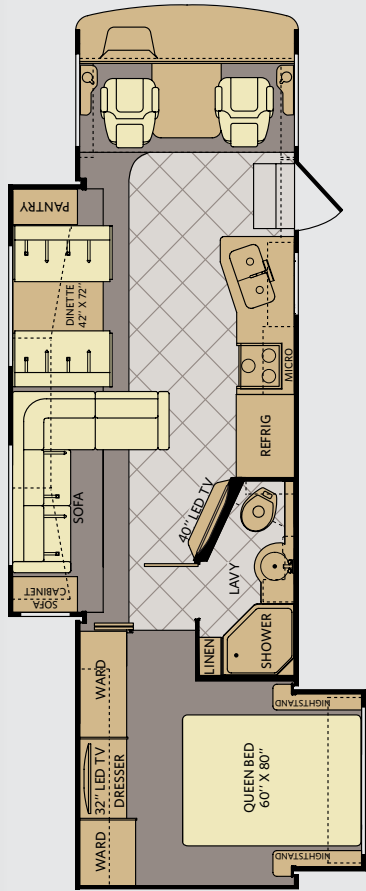
BARCELONA



BUTTERNUT

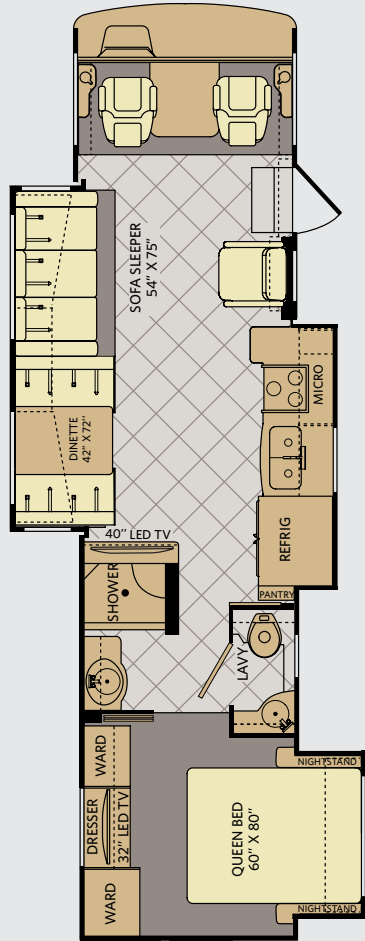


Bounder Floor Plans



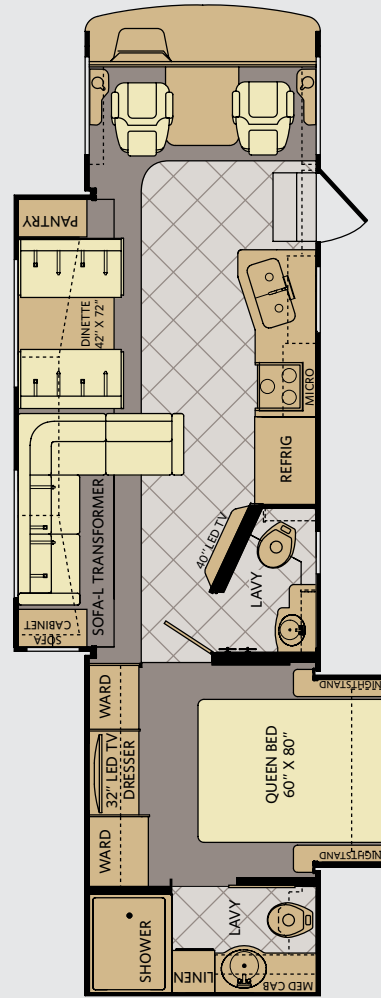
33C

AVAILABLE OPTIONS : 087, 093, 113, 126, 139, 144, 220, 830, 833, 852



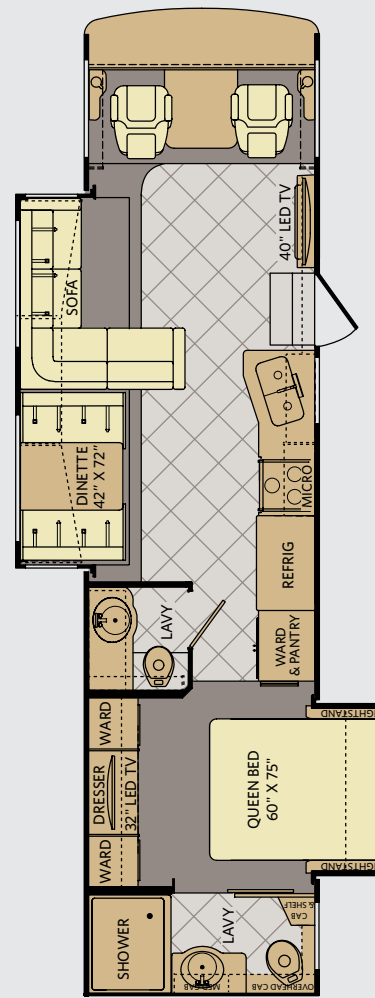
34T

AVAILABLE OPTIONS: 087, 093, 113, 126, 139, 144, 220, 830, 833



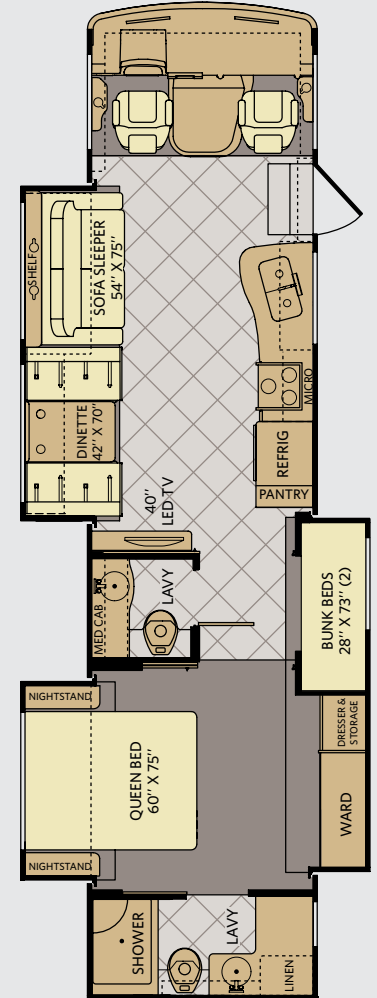
35K

AVAILABLE OPTIONS: 087, 093, 113, 126, 139, 144, 220, 830, 833



36E

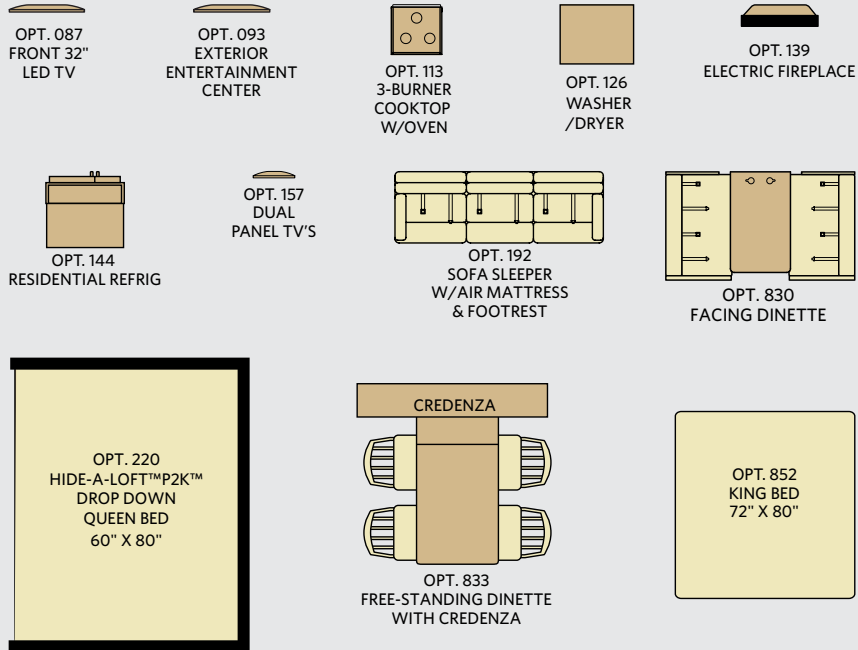
AVAILABLE OPTIONS: 093, 113, 126, 139, 144, 192, 220, 830



36H

AVAILABLE OPTIONS: 087, 093, 113, 126, 139, 144, 157, 220, 830, 833, 852

FLOOR PLAN OPTIONS



Addendums

- GVWR (Gross Vehicle Weight Rating) is the maximum permissible weight of this fully loaded motorhome. The GVWR is equal to or greater than the sum of the (UVW) unloaded vehicle weight plus the (OCCC) occupant cargo-carrying capacity.*
- GAWR (Gross Axle Weight Rating) is the maximum permissible loaded weight a specific axle is designed to carry.
- GCWR (Gross Combined Weight Rating) is the value specified by the motorhome manufacturer as the maximum allowable loaded weight of this motorhome with its towed vehicle. Towing and braking capacities may be different. Refer to Fleetwood and chassis manufacturer's manuals for complete information.
- Length measured from front bumper to rear bumper (excludes accessories).
- Excludes safety equipment and awnings.
- Motorhomes feature a body width over 96" which will restrict your access to certain roads. Before purchasing, you should research any state and/or province road laws which may affect your usage.
- Tank manufacturer's listed water capacity (WC). Actual propane capacity is 80% of water listing as required by the safety code.

† The chassis manufacturer recommends the installation of a supplemental brake control system to activate the brakes on the vehicle or trailer you are towing. Hitch receiver ratings expressed are maximum for the hitch receiver installed and may require the purchase of additional equipment that is dependent on the weight of the towed load. Consult with hitch receiver manufacturer for further information.

†† Minimum Towable Load is the available weight, up to GCWR, when the coach is fully loaded to maximum GVWR. However, if the coach is loaded to something less than maximum GVWR, that extra available weight can be added to your Towable Load. For example, if your coach is loaded to 1000lbs less than maximum GVWR, your Towable Load increases accordingly.

* UVW and OCCC are found on the label containing the federal certification tag in each RV.

CHASSIS

MODELS	33C	34T	35K	36E	36H
Wheelbase (inches)	208"	228"	228"	228"	242"
GVWR (lbs) ¹	22,000	22,000	22,000	22,000	22,000
Front GAWR (lbs) ²	8,000	8,000	8,000	8,000	8,000
Rear GAWR (lbs) ²	15,000	15,000	15,000	15,000	15,000
GCWR (lbs) ³	26,000	26,000	26,000	26,000	26,000
Hitch Rating Weight (lbs) [†]	5,000	5,000	5,000	5,000	5,000
Tongue Weight (lbs) [†]	500	500	500	500	500
Fuel Capacity (gal)	80	80	80	80	80

POWER PLATFORM® CHASSIS

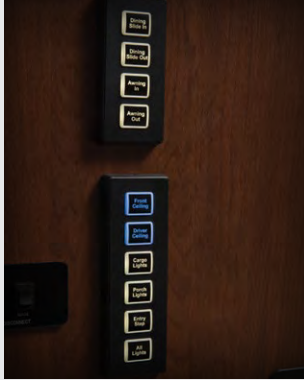
Model: Ford®
Engine: 6.8L Triton V10
Transmission: Ford 5-Speed,
 Automatic w/Overdrive

Alternator: 175 Amp
Torque: 457 lb-ft @ 3,250 RPM
Horsepower: 362HP

DIMENSIONS & CAPACITIES

MODELS	33C	34T	35K	36E	36H
Overall Length (inches) ⁴	34' 3"	35' 5"	36' 3"	36' 3"	37' 7"
Overall Height (with A/C)	12' 10"	12' 10"	12' 10"	12' 10"	12' 10"
Overall Width (maximum) ^{5,6}	102"	102"	102"	102"	102"
Interior Height (maximum)	84"	84"	84"	84"	84"
Interior Width (maximum)	96"	96"	96"	96"	96"
Patio Awning Width	17'	17'	17'	17'	17'
Interior Storage (cu. ft.)	123	123	126	146	134
Exterior Storage (cu. ft.)	160	165	180	170	190
Fresh Water Holding Tank (gal)	100	100	100	100	100
Grey Water Holding Tank (gal)	58	58	58	58	58
Black Water Holding Tank (gal)	42	42	42	42	42
Appliance Propane Tank (gal) (WC) ⁷	25	25	25	25	25
Water Heater Tank (gal)	10	10	10	10	10

Standard Features and Options



INTERIOR THROUGHOUT

- 100-Gallon Fresh Water Holding Tank
- 10-Gallon Quick Recovery Water Heater w/Direct Spark Ignition (Gas/Electric)
- 120V/12V AC/DC Converter
- 13,500 Btu/h
- 13,500 Btu/h w/Heat Pump Rear
- 20,000 & 25,000 Btu/h Furnace (34T)
- 30,000/20,000 Btu/h (36H)
- 34,000 Btu/h Furnace (33C, 35K, 36E)
- Complete PEX Plumbing System
- Co-pilot Slide-Out Workstation Integrated in Dash
- Deluxe Roller Bearing, Full-Extension Drawer Guides & Transit-Ship Locks
- Dual 6V Deep-Cycle House Batteries
- Dual Roof A/C High-Efficiency w/Solar Panel, Chill Grills & Bedroom Heat Pump
- Energy Management System
- Full HD Video System
- IllumaPlex™ Electronic Control System
- LED Lighting
- LG Solid-Surface Countertops
- Manual Day/Night Double-Roller Shades
- Soft-Touch Vinyl Ceiling

- Solid Divider Doors
- TV Antenna w/Signal Booster
- Wall Switches
- Water Heater Bypass Valve
- Water Pump Switches in Multiple Locations
- Whole-Coach Water Filtration System
- Wood Drawers

Optional

- Blu-ray® Home Theater Sound System
- CSA Package (Canadian Specs)
- Dual Flat-Panel Monitors (36H)
- Exterior Entertainment Center
- Facing Dinette
- Free-Standing Dinette w/Credenza (N/A 36E)
- Front Overhead LED TV (N/A 36E)
- Hide-A-Loft™ P2K™
- Manual Roller Shades
- Neutral Loss Protection
- Residential Refrigerator
- Sleeper Sofa w/Air Mattress & Footrest
- Solid-Surface Countertop Throughout (LX Option)
- Washer/Dryer
- Winegard® Stationary Satellite System



DRIVER CONVENIENCE

- 3-Point Seatbelts at Driver & Front Passenger Seats
- AM/FM Radio w/CD Player, Satellite Radio-Ready
- Auto A/C Heater Combo
- Auxiliary Start Circuit
- Battery Disconnect Switches
- Co-Pilot Integrated Dash Workstation & Large Center Console Storage Drawer
- Cruise Control
- Dash Fans
- Driver/Front Passenger Captain's Chairs w/Reclining Back/Slide Controls
- Dual Monitor Panel in Dash
- Ergonomic Dash Design w/Integrated Camera & A/V Monitors and Modern Finish

- Intermittent Wiper Control
- Low-Profile Engine Cover
- Manual Roller Shades at Driver/Passenger Window
- Passenger Chair Footrest
- Power Front Windshield Shade
- Radio Switch Main/Auxiliary Power
- Sidewall Mounted Rear-View Mirrors w/Heat, Turn Signals & Sideview Cameras
- Sleek, Modern Exterior Design w/5 Colorways & 1 New Graphic
- Soft-Touch Automotive Dash
- Tilt Steering Wheel

LIVING ROOM

- 40" LED HDTV (w/Storage Behind TV 35K, 33C)
- Composite Tile Flooring
- Entry Assist Handle
- Residential Seat Styling
- Home Theater Sound System

Optional

- 32" LED HDTV in Front Overhead (33C, 34T, 35K)
- Electric Fireplace
- Facing Dinette
- Free-Standing Dinette w/Credenza (33C, 34T, 35K, 36H)
- Sofa Sleeper w/Air Mattress & Footrest (36E)

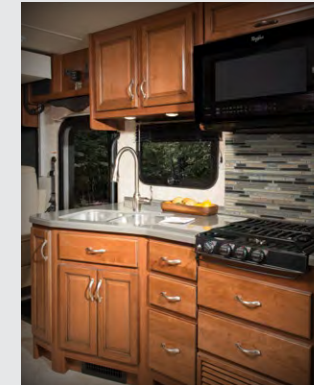
GALLEY

- 12 cu.ft. Dometic® 4-Door Refrigerator w/Icemaker
- 3-Burner Cooktop
- Adjustable Cabinet Shelves (Select Cabinets)
- Composite Tile Flooring
- Convenient Galley Slide-Out Cabinet w/Shelf (34T)
- Demand Water Pump
- Fan-Tastic® Power Roof Vent
- Galley Window
- Large Double Stainless-Steel Sink
- Large Drawers Under Dinette
- Raised-Panel Cabinet Doors

- Whirlpool® Convection Microwave Oven
- Single-Lever Galley Faucet w/Pullout Sprayer
- Sink Cover/Cutting Board
- Tile Backsplash
- Wastebasket

Optional

- 3-Burner Range w/Oven
- Residential Refrigerator w/Two Additional Batteries & 2000-Watt Inverter



BEDROOM

- 32" LED HDTV (with storage behind)
- Bedspread w/Decor Pillows
- Carpet Flooring
- Exclusive Dream Easy Mattress
- King Bed (33C, 36H)

Optional

- Padded Headboard
- Pleated Shades
- Rear Speakers
- Washer/Dryer

BATHROOM

- Composite Tile Flooring
- Fan-Tastic® Power Roof Vent w/Wall Switch
- Glass Shower Enclosure w/Skylight & Lower Step Threshold
- Hardwood Bath Door/Trims

- Large Split Bath (N/A 33C)
- Molded Shower Enclosure
- Porcelain Toilet w/Water Saver
- Skylight in Shower
- Toilet Tank San-T-Flush™ System

SAFETY/CONVENIENCE (INTERIOR)

- 10-ABC Fire Extinguishers
- Carbon Monoxide Detector/Alarm

- Multiple Seatbelt Locations
- Propane Detector/Alarm
- Smoke Detector/Alarm



EXTERIOR THROUGHOUT

- 4-Color Full-Body Paint
- 5.5 kW Onan® MicroQuiet Generator
- 50-Amp Service
- ABS Wheel Well Trims
- Blindspot "Doggy" Window - Late Availability
- Dual-Battery Charge Control
- Dual-Pane Windows w/Screens
- Electric Patio Awning w/LED Stripe
- Fiberglass Front/Rear Caps
- Frameless Flush-Mount Windows
- Heated Water & Holding Tank Compartments
- Mud Flaps
- Park Cable Receptacle
- Patio Receptacle
- TV/12V Jack in Doorside Compartment (Select Models)
- Utility Compartment w/Exterior Shower

Optional

- Exterior Entertainment Center 32" LED TV
- Protective Front Mask
- Rear Ladder



AUTOMOTIVE

- 22.5" Aluminum Wheels
- 4-Point Automatic Levelers
- Large One-Piece Bonded-in Windshield
- Trailer Hitch w/7-Pin Electrical Hook-Up
- Underhood Utility Light
- Wiper System with Large Swept Area



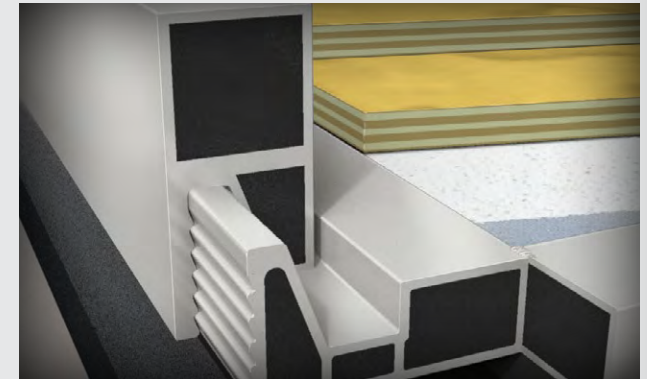
SAFETY/CONVENIENCE (EXTERIOR)

- Automotive Safety Glass
- Daytime Running Lights
- Entry Door w/Screen Door & Deadbolt Lock
- Hydraulic 4-Wheel Disc Brakes w/4-Wheel ABS
- Porch Light (Doorside)
- Power Entry Step



STORAGE

- Gas Lift Strut Supports
- Impressive Pass-Through Storage
- Large Lighted Roto-Molded Polyethylene Compartments
- Latch Rods
- Resistant Steel Hinges
- Side-Swing, Insulated Aluminum Luggage Doors w/ Single Paddle Latch & Corrosion



BODY STRUCTURE

- Aluminum Interlocking Floor/Wall/Ceiling Framing
- Basement Floor Configuration
- Power Platform® Construction (Fleetwood RV Exclusive)
- Radius Roof w/Ducted A/C
- Seamless Bonded Caps to Sidewalls
- Vacu-Bond® Floor & Ceiling
- Vacu-Bond® Walls w/Smooth Exterior High-Gloss Fiberglass



Not all options are available on all floor plans. See your Fleetwood dealer for details.
 *CSA standards may require substitution or deletion to achieve conformance.

Exterior Design Features



New Exterior 2016 Design Features

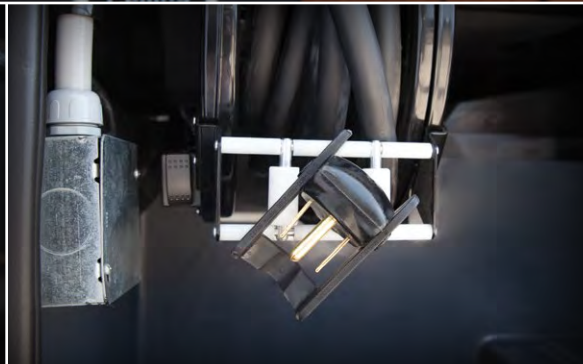
- Powerlock System™ w/ Interlocking Floors, Walls, Ceiling
- Powerframe™ Precision Welding w/5-Point Build System
- IllumaPlex™ Electronic Control System
- Aluminum Bus-Style Side Swing Luggage Doors
- F-21 Construction & Manufacturing Technology
- 100 Gallon Fresh Water Holding Tank
- Aluminum Side-Swing Luggage Door Latching System
- Blind-Spot Safety "Doggy" Window - Late Availability
- Exclusive 3rd Generation Power Platform® Construction w/Increased-Multiple Rotocast Molded Pass-Through Storage Bays
- One-Piece Front Cap with Integrated LED Lights
- One-Piece Rear Cap Design w/ Integrated LED Lights





LX Package

- Onan® 7.0kW Generator
- 15,000 Btu/h w/Heat Pump Front
- Exterior Chrome Package (Luggage Compartment Handles & Mirrors w/Side View Cameras)
- Power Cord Reel
- Solid-Surface Countertops Throughout





WHY FLEETWOOD?



Quality

There's no cutting corners. Skilled craftsmen build every Fleetwood RV for maximum durability and longevity.



Trust

More people trust Fleetwood RV. After all, we've spent over 60 years perfecting motorhomes, earning the loyalty of generations of RVers.



Passion

We're truly passionate about the RV lifestyle. Fleetwood RV was founded by RV enthusiasts, and that tradition continues today.



Safety

You've got precious cargo. So we've engineered dozens of innovative safety features into our motorhomes to give you more peace of mind.



Service

Help is nearby with 24/7 emergency Fleetwood RV Trusted Roadside Assistance* And when you need an upgrade or repair, you'll find Fleetwood RV dealers all across North America ready to assist you.



Warranty

Exclusive RV OwnerCare** warranty. See your Fleetwood RV dealer for details.

* All 2015 Fleetwood RV Motorhomes include a 1-year emergency roadside assistance membership. For complete info, see your Fleetwood RV dealer.



Visit FleetwoodRV.com



RV OWNERCARE**

Limited one-year/15,000-mile coach warranty and three-year/45,000-mile structural warranty, whichever occurs first, and it is fully transferable for the first 12 months. RV OWNERCARE is one of the RV industry's most comprehensive programs and includes systems, appliances, components and construction, with no deductible and no service charge. RV OWNERCARE coverage is provided by a company that will be around in the future to service your needs. See your nearest Fleetwood RV dealer for a full explanation of benefits and restrictions.

FLEETWOOD MOTORHOME ASSOCIATION

As a Fleetwood RV owner, you're invited to become a member of the Fleetwood Motorhome Association (FMA). Becoming a member is the perfect way to meet other Fleetwood owners who love to travel across America and share in the RV lifestyle. Visit the FMA website at www.fma4fun.org to learn more and join the fun.

CONTACT US

To locate a dealer near you, visit our website at www.fleetwoodrv.com or call 1-800-322-8216. We can also be contacted at Fleetwood RV Customer Relations, P.O. Box 1007, Decatur, IN 46733.

IMPORTANT—PLEASE READ: Product information, photography and illustrations included in this publication were as accurate as possible at the time of printing. For further product information and changes, please visit our website at www.fleetwoodrv.com or contact your local Fleetwood RV dealer. Prices, materials, design and specifications are subject to change without notice. All weights, fuel, liquid capacities and dimensions are approximate. Fleetwood RV has designed its recreational vehicles to provide a variety of uses for its customers. Each vehicle features optimal seating, sleeping, storage and fluid capacities. The user is responsible for selecting the proper combination of loads (i.e., occupants, equipment, fluids, cargo, etc.) to ensure that the vehicle's capacities are not exceeded.

YOUR LOCAL FLEETWOOD RV DEALER IS: