

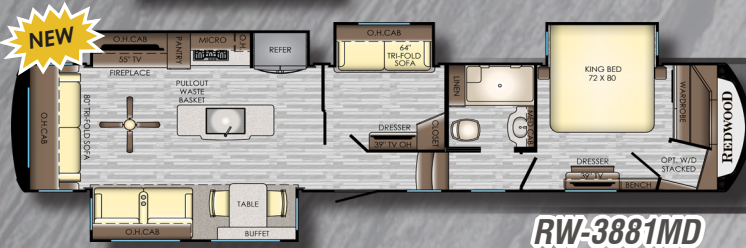


**THE FOUNDATION OF LUXURY**



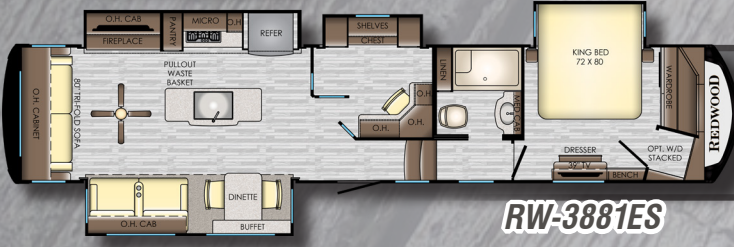
WEIGHT	LENGTH	HEIGHT	FRESH W	BLACK W	GRAY W	HITCH
13246	36' 8"	13' 6"	66 Gal	45 Gal	88 Gal	2362

**RW-3401RL**



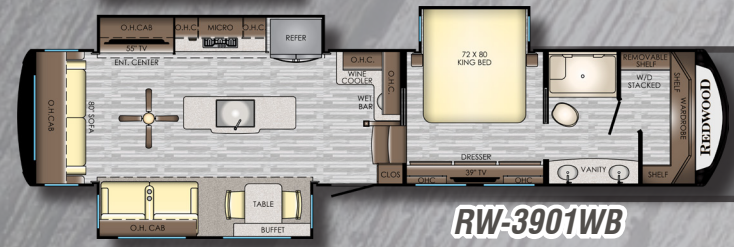
WEIGHT	LENGTH	HEIGHT	FRESH W	BLACK W	GRAY W	HITCH
14514	41' 8"	13' 6"	66 Gal	45 Gal	88 Gal	2382

**RW-3881MD**



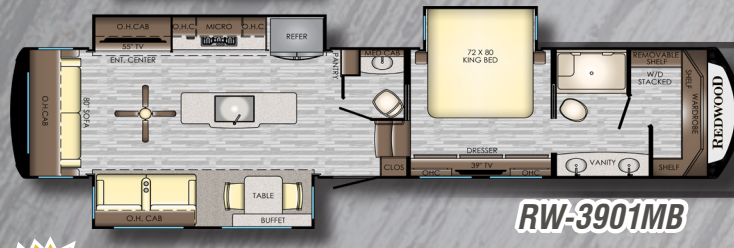
WEIGHT	LENGTH	HEIGHT	FRESH W	BLACK W	GRAY W	HITCH
14432	41' 8"	13' 6"	66 Gal	45 Gal	88 Gal	2580

**RW-3881ES**



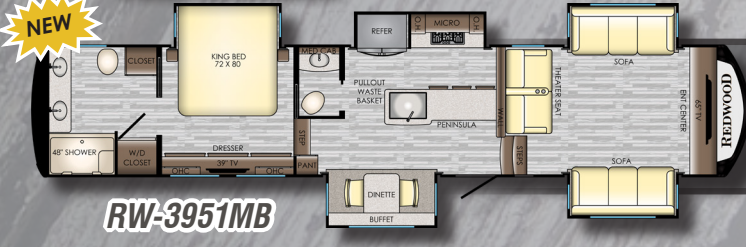
WEIGHT	LENGTH	HEIGHT	FRESH W	BLACK W	GRAY W	HITCH
14312	40' 2"	13' 6"	66 Gal	44 Gal	88 Gal	2412

**RW-3901WB**



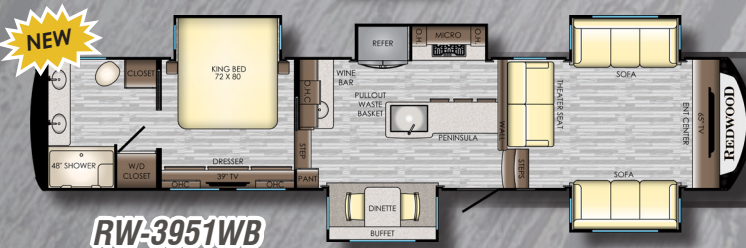
WEIGHT	LENGTH	HEIGHT	FRESH W	BLACK W	GRAY W	HITCH
14402	40' 2"	13' 6"	66 Gal	88 Gal	88 Gal	2570

**RW-3901MB**



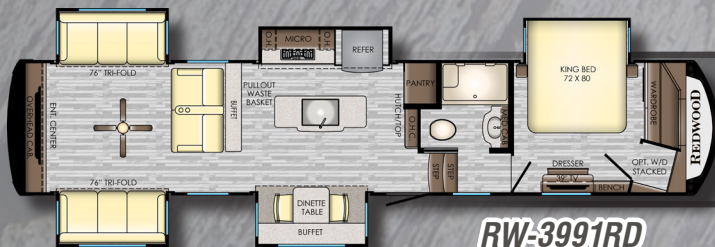
WEIGHT	LENGTH	HEIGHT	FRESH W	BLACK W	GRAY W	HITCH
14940	42' 4"	13' 6"	66 Gal	82 Gal	82 Gal	2778

**RW-3951MB**



WEIGHT	LENGTH	HEIGHT	FRESH W	BLACK W	GRAY W	HITCH
14806	42' 4"	13' 6"	66 Gal	44 Gal	82 Gal	2736

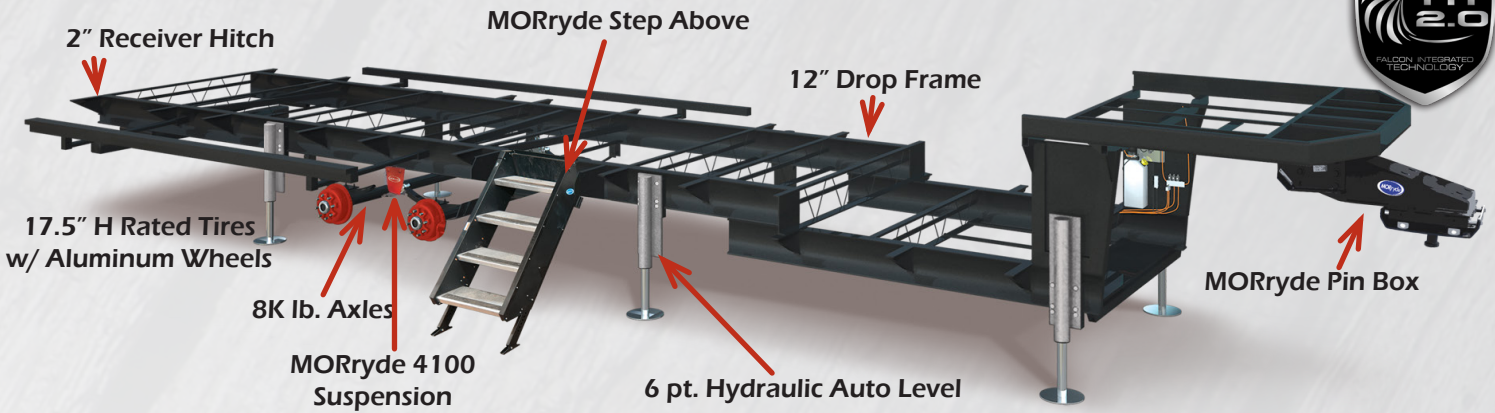
**RW-3951WB**



WEIGHT	LENGTH	HEIGHT	FRESH W	BLACK W	GRAY W	HITCH
14682	41' 5"	13' 6"	66 Gal	45 Gal	88 Gal	2620

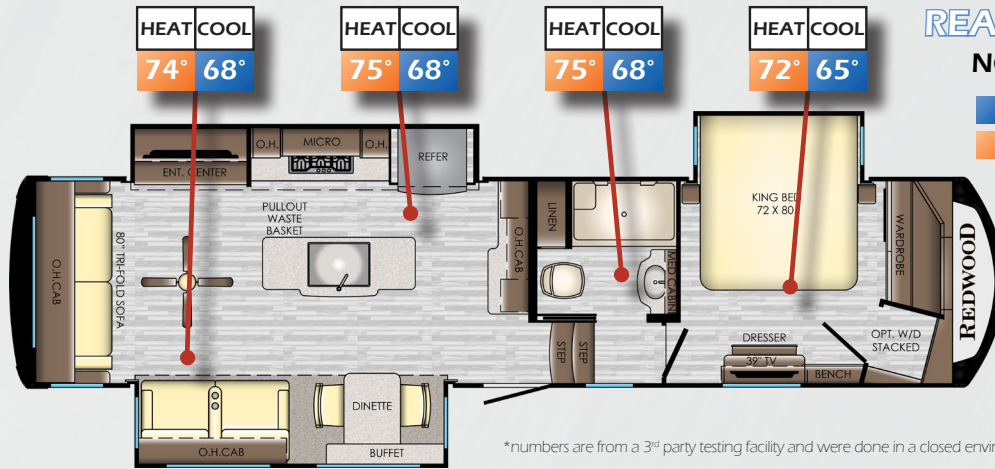
**RW-3991RD**

# Our F.I.T. 2.0 Chassis is made from the best components available!



## REAL TEMPERATURE TESTED! NO VAGUE/MADE-UP R-VALUES

- A/C SYSTEM TESTED IN 110° ENVIRONMENT\*
- FURNACE TESTED IN 0° ENVIRONMENT\*



\*numbers are from a 3<sup>rd</sup> party testing facility and were done in a closed environment



**2 & 3**  
Year Limited Base Warranty    Year Limited Structural Warranty

Nationwide 4G LTE Data Plans **4G**



## Relax. You're iN-Command

- ✓ Never lose your controller
- ✓ Unlimited Users
- ✓ When you have your phone, you're iN-command



To Learn More!

iN-Command embraces the next generation of controls for your Redwood RV by acting as the central hub of operations and puts you at the helm using your preferred smart device.

## Paint Options



Sapphire Edition



Sterling Edition



Classic Edition



Garnet Edition



## STANDARDS AND OPTIONS

### KITCHEN & APPLIANCES

- Solid Hardwood Cabinetry
- Hardwood Stiles Pre-Drilled & Screwed Together
- Residential Sized Storage Drawers
- Pots & Pans Storage
- Full-Extension Ball-Bearing Drawer Guides
- Residential Soft Close Hidden Hinges
- EGS Steel Backed Cabinet Anchors
- Residential Pantry w/ Pullout Drawers & 110v Outlet
- Solid Surface Countertops
- Oversized Stainless Steel Sink w/ Accessories
- High Rise Island w/ Dedicated Garbage Cabinet
- High Rise Faucet w/ Pull Out Sprayer
- Over-Island Lighting
- 22 Ft<sup>3</sup> Residential Refrigerator w/ Inverter (In all Residential Models)
- 18 Ft<sup>3</sup> Side-by-Side Norcold Refrigerator w/ Ice Maker (In all RV Refrigerator Models)
- Residential 3-Burner Gas Cooktop
- 30" Stainless Microwave w/ Exhaust Fan
- Max Air Fan w/ Rain Sensor
- Residential Style Oven

### BEDROOM

- Gel Foam King Bed
- 110v Outlets on Both Sides of Bed
- USB Ports on Both Sides of Bed
- 39" LED HDTV
- Residential Dresser w/ Drawers
- Walk-In Closet with Shelving
- Night Roller Shades
- 2<sup>nd</sup> 15k BTU Whisper Quiet A/C w/Heat Pump

### LIVING AREA

- Upgraded Collection Furniture Package:
  - » Residential Style Sofa
  - » Tru-Sit 5 Function Recliners Theatre Seating
  - » Buffet -Style Adjustable Dinette w/ Leaf Extension
  - » 2 Premium Dinette Chairs
  - » 2 Folding Dinette Chairs
- Day/Night Roller Shades
- 55"-65" HDR HDTV (VBM)
- Bluetooth Entertainment System w/ Soundbar & Powered Subwoofer
- Pre-wired for Winegard® Satellite Systems
- 2 USB Ports Beside Sofa
- Additional USB Ports Beside Buffet
- Ceiling Fan (VBM)
- 5,100 BTU Fireplace

### BATHROOM

- One Piece Fiberglass Shower
- Domed Skylight in Shower
- Porcelain Foot Flush Toilet
- Heat & A/C Duct in Bathroom
- Max Air Fan w/ Rain Sensor
- Adjustable Handheld Shower Head

- Solid Surface Countertops

### GENERAL INTERIOR

- Energy Management System (EMS)
- iN-Command™ Smart Automation System
- LED Recessed Ceiling & Accent Lights
- Solid Hardwood Slide Fascia
- 7' Interior Slide Room Height
- 15,000 BTU Whisper Quiet A/C
- 35,000 BTU Furnace
- Residential Carpet
- Maximum Linoleum Throughout
- Central Vacuum w/ Power Dust Pan
- Magnetic Door Stops
- USB Ports Throughout
- 4G WiFi
- Washer Dryer Prep

### CONSTRUCTION

#### Chassis

- Custom FIT 2.0 Chassis
  - » Falcon 12"/10" I-Beam Drop Frame
  - » Falcon Hydraulic Slide Out System w/ Manual Override (Main Slides)
  - » Falcon 8,000 lb. Axles
  - » Falcon 2" (3,000 lb.) Receiver Hitch
  - » MORryde Pinbox
  - » MORryde LRE 4100 Suspension System
  - » MORryde Lift Assist Steps
  - » 6-Point Hydraulic Jacks w/Auto Leveling
  - » 17.5 H Rated Tires (w/ Spare)
  - » 3-3/8" Self-Adjusting Drum Brakes

#### Sidewalls

- Z-65 True Gel Coat Exterior
- 2" Laminated Wall
- Sanded Block Foam Insulation
- Double Welded Aluminum Frame
- Double Luan Backer

#### Floor

- 5/8" Floor Decking
- 3" Aluminum Subfloor - 11" on Center (VBM)
- 2 Layers of Batten Fiberglass Insulation
- 1 Layers of Radiant Tech Foil Insulation
- Darco Moisture Barrier
- Corrugated Underbelly
- Fully Enclosed & Heated Underbelly

#### Roof

- One Piece Alpha-Ply Roof Material
- 5" Reinforced Trussed Roof Rafter System
- Double Trusses at each A/C

- 3/8" Roof Decking
  - 1 Layer of Batten Fiberglass Insulation
  - 1 Layer of Radiant Tech Foil Insulation
  - Fully Walkable
- ### General Exterior
- Straight Roof Line (Luxury Profile)
  - Front & Rear Insulated Fiberglass Caps
  - LED Pin Box Light
  - Electric Adjustable Awning w/ LED Lights
  - 2nd Power Awning w/ LED (VBM)
  - Docking Station w/ All Hookups & Black Tank Flush
  - Insulated Slam Latch Baggage Doors
  - Fully Finished & Heated Pass-Through Storage w/ Netting

- Radio in Pass-Through
- Exterior Speakers w/ LED Lights
- Bauer Keyed-A-Like Lock System
- (2) 45 Gallon Grey Tanks (VBM)
- 45 Gallon Black Tank (VBM)
- Tanks Heated via Forced Heat
- 12 gal. DSI Hot Water Heater
- Enclosed & Heated Water Lines
- Seamless Residential Insulated Heat Ducts
- 2-Zoned Radius House A/C Ducting System
- Frameless Dual Pane Windows
- Solar Prep
- Wireless Backup Camera Prep
- 50 Amp Service
- Progressive 75 Amp/12v DC Power Converter
- Electric Power Cord Reel - (VBM)
- 110v Exterior Receptacle
- Aluminum Wheels
- (2) 30 lb. LP Tanks w/Auto Change Over

### Options

- High Efficiency Dishwasher
- 3rd 15,000 BTU A/C
- 5.5 Onan LP Generator
- Holding Tank Heating Pads
- Slide Awning Package
- Disc Brakes
- Full Body Paint

- Parks Package
- Full Time Living Package

\*VBM - Varies By Model

www.redwood-rv.com • 1140 W. Lake St Topeka, IN 46571 • (260) 593 - 3850

DISCLAIMER: Product information is as accurate as possible as of the date of publication of this brochure. All features, floor plans, and specifications in this brochure are subject to change without notice. Please also consult Redwood's web site at www.redwood-rv.com for more current product information and specifications. Tow Vehicle Disclaimer. CAUTION: Owners of Redwood recreational vehicles are solely responsible for the selection and proper use of tow vehicles. All customers should consult with a motor vehicle manufacturer or their dealer concerning the purchase and use of suitable tow vehicles for Redwood products. Redwood RV disclaims any liability or damages suffered as a result of the selection, operation, use or misuse of a tow vehicle. CROSSROADS' LIMITED WARRANTY DOES NOT COVER DAMAGE TO THE RECREATIONAL VEHICLE OR THE TOW VEHICLE AS A RESULT OF THE SELECTION, OPERATION, USE OR MISUSE OF THE TOW VEHICLE. REFERENCE CROSSROADS RV COMPANY OWNERS MANUAL FOR LIMITED WARRANTY DETAILS. \*Length is defined as the distance from the centerline of hitch pin/coupler to rear bumper of trailer.