



HOLIDAY RAMBLER

AMBASSADOR

2015 HOLIDAY RAMBLER | CLASS A DIESEL



DOWNTOWN BROWN



CAPPUCCINO



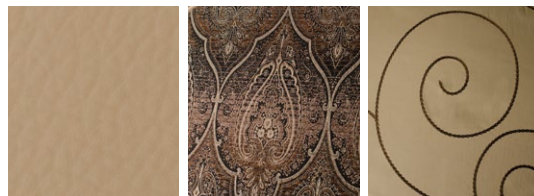
GATEWAY GRAY

TOP FEATURES

- 40" Sony® LED TV
- LED Lighting
- Hardwood Cabinet Doors/Drawers
- One-Piece Panoramic Windshield
- Full-Body Paint
- Side-Swing Luggage Doors
- 22.5" Aluminum Wheels
- Pass-Through Basement Storage
- 4-Point Auto Hydraulic Leveling Jacks
- Seamless Sidewall Transitions
- Sideview Cameras
- Dual-Pane Windows
- Awning w/LED Light Strip
- 84" Interior Height
- Combo or Stackable Washer/Dryer (Optional)
- Drop Down Overhead Bed (Optional)



WATERFORD II



SOFA

ACCENT

BEDSPREAD



COUNTERTOP

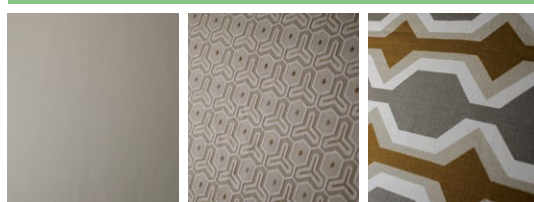
FLOORING

CARPET

GLAZED FULTON CHERRY



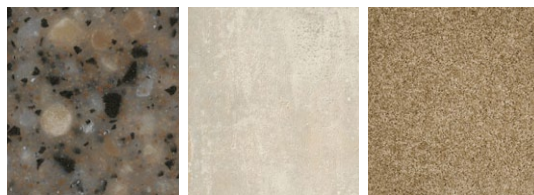
GATEWAY GRAY



SOFA

ACCENT

BEDSPREAD



COUNTERTOP

FLOORING

CARPET

GLAZED HILLSIDE CHERRY



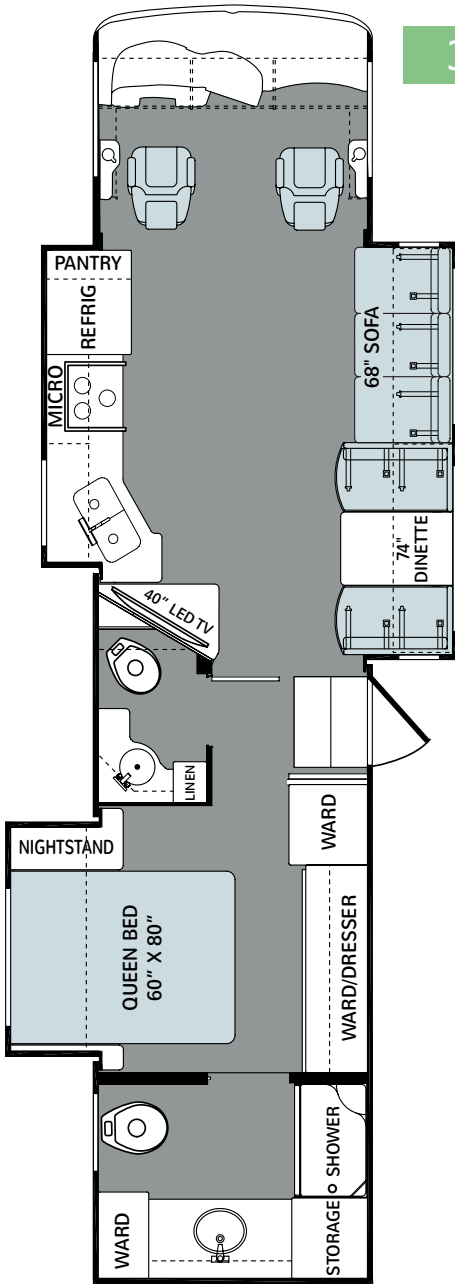


HOLIDAY RAMBLER

AMBASSADOR

2015 HOLIDAY RAMBLER | CLASS A DIESEL

38DBT



WEIGHTS & MEASUREMENTS

MODELS	38DBT
Wheelbase (inches)	266"
GVWR (lbs) ¹	28,000
Front GAWR (lbs) ²	10,500
Rear GAWR (lbs) ²	17,500
GCWR (lbs) ³	33,000
Hitch Rating Weight (lbs) ^{†, ††}	5,000
Tongue Weight (lbs) [†]	500
Fuel Capacity (gal)	90

ROADMASTER™ B340

Model: Freightliner® XCS Series
 Engine: Cummins® ISB 6.7L
 Transmission: Allison® 2500 MH
 6 speed w/Electric Shifter

Alternator: 160 Amp
 Torque: 700 lb-ft @ 1,600 RPM
 Horsepower: 340HP

DIMENSIONS & CAPACITIES

MODELS	38DBT
Overall Length ⁴	38' 11"
Overall Height (with A/C)	11'10"
Overall Width (maximum) ^{5, 6}	102"
Interior Height (maximum)	84"
Interior Width (maximum)	96"
Patio Awning Width	20'
Interior Storage (cu. ft.)	209
Exterior Storage (cu.ft.)	131
Fresh Water Holding Tank (gal)	77
Grey Water Holding Tank (gal)	60
Black Water Holding Tank (gal)	32
Appliance Propane Tank (gal) (WC) ⁷	28
Water Heater Tank (gal)	10

Available Options

084 Bedroom 32" LED TV
 087 Front 32" LED TV
 093 Exterior Entertainment Center
 113 3-Burner Cooktop w/Oven
 126 Washer/Dryer Combo
 131 Stackable Washer/Dryer
 144 Residential Refrigerator

186 Driver/Passenger Pedestal Table
 203 Sofabed w/Air Mattress
 217 Drop Down Queen Bed 60"x 80"
 833 Freestanding Dinette w/Credenza
 852 King Bed
 853 Queen Bed w/Memory Foam 60" x 75"
 854 King Bed w/Memory Foam 72" x 80"

Addendums

- GVWR (Gross Vehicle Weight Rating) is the maximum permissible weight of this fully loaded motorhome. The GVWR is equal to or greater than the sum of the (UUV) unloaded vehicle weight plus the (OCCC) occupant cargo-carrying capacity*.
 - GAWR (Gross Axle Weight Rating) is the maximum permissible loaded weight a specific axle is designed to carry.
 - GCWR (Gross Combined Weight Rating) is the value specified by the motorhome manufacturer as the maximum allowable loaded weight of this motorhome with its towed vehicle. Towing and braking capacities may be different. Refer to Fleetwood and chassis manufacturer's manuals for complete information.
 - Length measured from front bumper to rear bumper (excludes accessories).
 - Excludes safety equipment and awnings.
 - Motorhomes feature a body width over 96" which will restrict your access to certain roads. Before purchasing, you should research any state and/or province road laws which may affect your usage.
 - Tank manufacturer's listed water capacity (WC). Actual propane capacity is 80% of water listing as required by the safety code.
- † The chassis manufacturer recommends the installation of a supplemental brake control system to activate the brakes on the vehicle or trailer you are towing. Hitch receiver ratings expressed are maximum for the hitch receiver installed and may require the purchase of additional equipment that is dependent on the weight of the towed load. Consult with hitch receiver manufacturer for further information.
- * UUV and OCCC are found on the label containing the federal certification tag in each RV.

†† The Minimum Towable Load of this vehicle is the available weight capacity, up to GCWR, when the coach is fully loaded to maximum GVWR. However, if the coach is loaded to something less than maximum GVWR, that extra available weight capacity can be added to your Towable Load. For example, if your coach is loaded to 1000lbs less than maximum GVWR, your Towable Load increases accordingly. Do not exceed the hitch rating weight, GVWR or GCWR.

IMPORTANT—PLEASE READ

Product information, photography and illustrations included in this publication were as accurate as possible at the time of printing. For further product information and changes, please visit our website at www.holidayrambler.com or contact your local Holiday Rambler dealer. Prices, materials, design and specifications are subject to change without notice. All weights, fuel, liquid capacities and dimensions are approximate. Holiday Rambler has designed its recreational vehicles to provide a variety of uses for customers. Each vehicle features optimal seating, sleeping, storage and fluid capacities. The user is responsible for selecting the proper combination of loads (i.e., occupants, equipment, fluids, cargo, etc.) to ensure that the vehicle's capacities are not exceeded.

CONTACT US

To locate a dealer near you, visit our website at www.holidayrambler.com or call 1-877-252-4666. We can also be contacted at Holiday Rambler Customer Relations, P.O. Box 1007, Decatur, IN 46733.

ALLIED RECREATION GROUP



©2014 Allied Recreation Group, Inc. Printed in USA.
 Inventory Control Number AMB15F2, 07/14. Model Year 2015, Second Edition.