

Jayco | Jay Flight SLX 8 Travel Trailer

# JAY FLIGHT SLX 8

#1 SELLING TRAVEL TRAILER FOR 15 YEARS



**2+3**  
YEAR | YEAR  
WARRANTY



# INTERIOR DESIGN



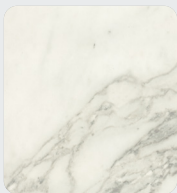
## CLASSIC COTTAGE



Wood



Floor



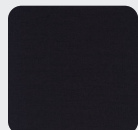
Countertop



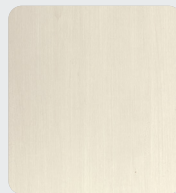
Main Fabric



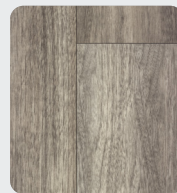
Accent Fabrics



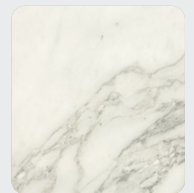
## MODERN FARMHOUSE



Wood



Floor



Countertop



Main Fabric



Accent Fabrics





# JAY FLIGHT SLX 8

212QB



224BH



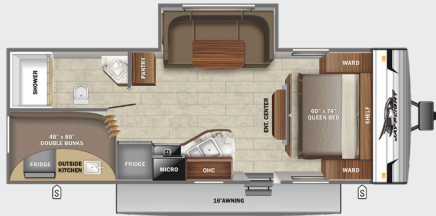
236TH



240RBS OPTIONS: B



242BHS



263RBS OPTIONS: B



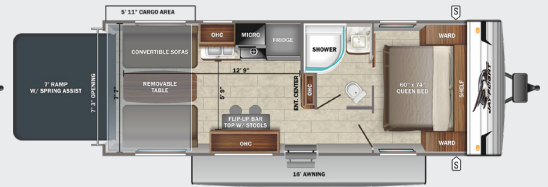
264BH OPTIONS: A



265RLS OPTIONS: B



265TH



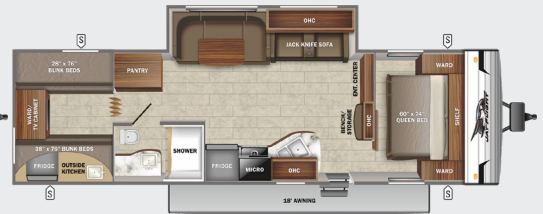
267BHS OPTIONS: B



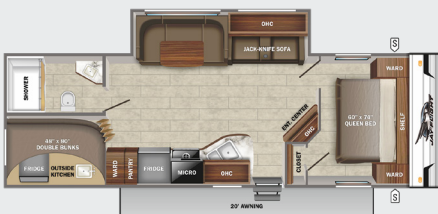
284BHS OPTIONS: B



294QBS OPTIONS: B



295BHS OPTIONS: B



324BDS OPTIONS: B



-  STORAGE
-  MICRO MICROWAVE
-  OHC OVERHEAD CABINETS
-  FRIDGE REFRIGERATOR
-  WARD WARDROBE

### OPTIONS

A

B



Chil N' Stor



Tri-Fold Sofa

# STANDARDS & OPTIONS

## EXTERIOR

Axles with electric, self-adjusting brakes and E-Z Lube®  
Galvanized-steel, impact-resistant wheel wells  
I-Class™ cambered structural steel I-beams  
Fully-integrated A-frame  
5/8 in. tongue-and-groove plywood floor decking  
Magnum Truss™ Roof System with plywood decking  
and seamless DiFlex III material  
Large exterior downspouts  
13,500-BTU roof-mounted A/C  
30-amp service  
Rooftop solar prep  
20 lb. propane bottles (2) with cover  
Spare tire with cover  
Camp kitchen (select models)  
Backup & side marker camera prep  
Exterior TV bracket  
LED exterior lighting  
G20 dark tinted safety-glass privacy windows  
Detachable power cord  
LP quick connect (outside grill prep)  
Friction hinge entry door with shade-prep window

## INTERIOR

81 in. ceiling height  
Solid hardwood cabinet doors  
LED interior lighting  
Wardrobe/pantry storage  
J-Steel™ jackknife sofa with armrest & cup holders  
Vinyl flooring throughout (including slide floors)  
Premium multimedia sound system with MP3/iPod  
input jacks and Bluetooth® connectivity  
Digital TV antenna

Cable/satellite TV hookup  
Smoked-glass cabinet door inserts (select models)  
Seamless solid-surface look kitchen countertops  
Large 50/50 acrylic kitchen sink  
Heavy-duty, 75lb., full-extension, steel ball-bearing  
drawer guides  
Residential-height plywood bed platforms  
Bedroom doors in place of curtains (select models)  
Queen bed struts  
Queen mattress  
Bedroom LED accent lighting  
300 lb. rated bunk beds (select models)  
600 lb. rated bunk beds (double bunks only)  
Privacy curtains in bunk areas (select models)  
4 in. thick bunk mats (select models)  
Marine-grade toilet with foot flush  
Tub surround  
Bathroom exhaust vent  
Shower curtain with curved shower track (select models)  
Wood-trimmed mirror in bathroom

## CUSTOMER VALUE PACKAGE (MANDATORY)

Goodyear® Endurance® tires (made in the USA)  
Front diamond plate  
6 gal. gas/electric DSI water heater  
Spare tire with cover  
Outside shower  
Power awning with LED lights  
Marine grade exterior speakers  
Stabilizer jacks (4)  
Water heater bypass  
Keyed-Alike™ entry and baggage doors  
JaySMART™ (Safety Markers And Reverse Travel)

LED lighting (patent-pending)  
Large folding entry door grab handle  
Power tongue jack  
Black tank flush  
Pleated window shades  
3-burner range with glass cover  
6 cu. ft. gas/electric refrigerator with temperature  
controls  
Oven with glass door and interior light  
Microwave oven  
Range hood  
Fitted bed sheet  
Bathroom skylight  
Front diamond plate

## OPTIONS

15,000-BTU, roof-mounted A/C  
50-amp service with second A/C prep (284BHS, 294QBS,  
295BHS & 324BDS)  
Chil N' Stor (264BH)  
Enclosed underbelly  
MORryde® StepAbove™ entry steps  
Roof ladder (N/A 236TH & 265TH)  
Solar Power Package (100W roof solar panel & 30-amp  
digital controller)  
Ramp patio (236TH & 265TH)  
LED TV (standard 284BHS)  
Hide-a-bed with tri-fold mattress (select models)  
8 cu. ft. 12V stainless steel refrigerator  
Outside griddle with bumper mount

\*Indicates split tanks

FLOORPLAN	EXTERIOR TRAVEL LENGTH	EXTERIOR WIDTH	EXTERIOR HEIGHT (WITH A/C)	INTERIOR HEIGHT	UNLOADED VEHICLE WEIGHT	DRY HITCH WEIGHT	GVWR	CARGO CARRYING CAPACITY	FRESH WATER CAPACITY (INCLUDING WATER HEATER)	GRAY WASTE WATER CAPACITY	BLACK WASTE WATER CAPACITY	SLEEPING CAPACITY
212QB	25' 8"	8' 0"	10' 6"	6' 9"	4,235	470	5,500	1,265	48	33	39	4-5
224BH	27' 1"	8' 0"	10' 6"	6' 9"	4,430	445	5,600	1,170	48	39	39	7-8
236TH	28' 4"	8' 0"	10' 5"	6' 9"	TBD	TBD	TBD	TBD	48	39	39	5-6
240RBS	TBD	TBD	TBD	TBD	TBD	TBD	TBD	TBD	TBD	TBD	TBD	3-4
242BHS	29' 4"	8' 0"	10' 10"	6' 9"	5,400	685	7,000	1,600	44	39	39	6-8
263RBS	TBD	TBD	TBD	TBD	TBD	TBD	TBD	TBD	TBD	TBD	TBD	4-6
264BH	29' 5"	8' 0"	10' 5"	6' 9"	4,580	470	6,000	1,420	48	39	39	8-9
265RLS	31' 1"	8' 0"	11' 0"	6' 9"	5,990	710	7,150	1,160	44	39	39	4-6
265TH	30' 4"	TBD	TBD	TBD	5,060	860	7,500	TBD	48	39	39	3-4
267BHS	30' 4"	8' 0"	11' 0"	6' 9"	5,770	680	7,000	1,230	44	39	39	8-10
284BHS	33' 7"	8' 0"	11' 0"	6' 9"	6,060	735	7,500	1,440	44	39	39	8-10
294QBS	35' 7"	8' 0"	11' 1"	6' 9"	TBD	TBD	TBD	TBD	44	47.5	39	8-10
295BHS	TBD	TBD	TBD	TBD	TBD	TBD	TBD	TBD	TBD	TBD	TBD	8-10
324BDS	36' 4"	8' 0"	11' 2"	6' 0"	TBD	TBD	TBD	TBD	46	41*	39	8-10

Meet your Jayco Dealer



Scan QR code for specification definitions

Some specs at the time of print may include estimates. For the most updated information, please visit [Jayco.com/jay-flight-slx-8](http://Jayco.com/jay-flight-slx-8)

Jayco, Inc. | P.O. Box 460 | Middlebury, IN 46540

See dealer for further information and prices. All information in this brochure and on [www.jayco.com](http://www.jayco.com) is the latest available at the time of publication approval. Jayco reserves the right to make changes and to discontinue models without notice or obligation. Photography may show optional equipment or props used for decoration purposes only. RVs built for sale in Canada may differ to conform to Canadian codes. JAYCO and the JAYCO BIRD IN FLIGHT are registered trademarks of Jayco, Inc. Printed in USA 10/21 ©2021 Jayco, Inc. 257078



Jayco - Part of the Jayco Family of Companies