

SOUTHWIND 2014

SOUTHWIND®



FLEETWOOD RV

## THE SPIRIT OF ADVENTURE

It's the simple pleasures that make traveling worthwhile. With fresh, functional comfort, Southwind is ready for anything, which means there's always something to discover. Don't forget to pack your sense of adventure—in Southwind, the journey is as memorable as the destination.



SOUTHWIND 36L SHOWN IN PEWTER MIST INTERIOR DÉCOR WITH CINNABAR WOOD CABINTRY



## WHY BUY SOUTHWIND?

**Contemporary Styling** With its clean, modern style, Southwind's interior is spacious, comfortable, and feels like home.

**Full-Body Paint** Southwind projects a high-quality image with dazzling, full-body paint and striking exterior graphics.

**Entertainment Centers** With big HDTVs in both the living room and the bedroom, your entertainment options are as wide open as the road.

**Comfort and Convenience** Camping in Southwind doesn't mean roughing it. You'll enjoy comfortable furniture, brand-name appliances and high-end components.

**Power Platform® Construction** Fleetwood's patented platform is not only super-strong, it provides an amazing amount of storage, including pass-through storage on select models.



# 2014 GRAPHICS AND DÉCOR

*Southwind*



Champagne Shimmer



Pewter Mist



Sandstone Mist

Both inside and out, we offer a wide selection of colors, styles and finishes. From the moment you lay your eyes on a Fleetwood RV, the high-style graphics and décor collection welcome you with gracious beauty and contemporary design. We've paid attention to every detail. So wherever you are, you'll feel right at home.

	CHAMPAGNE SHIMMER	PEWTER MIST	CABINTRY
SOFA			
ACCENT			
BEDSPREAD			
COUNTERTOP			
FLOORING			
CARPET			

# STANDARD FEATURES AND OPTIONS

## INTERIOR THROUGHOUT

- 10-Gallon Quick Recovery Water Heater w/Direct Spark Ignition (Gas/Electric)
  - 20,000/30,000 BTU Dual Furnaces (36D)
  - 34,000 BTU Furnace (32VS, 34A, 36L)
  - Complete PEX Plumbing System
  - Deluxe Roller Bearing, Full-Extension Drawer Guides & Transit-Ship Locks
  - Demand Water Pump w/Filter
  - Dual Roof A/C High-Efficiency w/Solar Panel, Chill Grills & Bedroom Heat Pump
  - Soft Touch Vinyl Ceiling,
  - Composite Tile Flooring Throughout
  - Battery Disconnect System
  - Full HD Video System
  - Water Heater Bypass
  - Whole Coach Water Filtration System
  - 7' Interior Ceiling Height
  - LED Lighting
  - LG Solid-Surface Countertops
  - 1,200-Watt Inverter
  - Energy Management System
  - Computer Workstation In-Dash
  - 120V/12V AC/DC Converter Central Electrical Panel
- Optional*
- CSA Package (Canadian Specs)\*\*
  - Neutral Loss Protection
  - Auto-Locating Satellite Dish
  - Blu-ray® Home Theater Sound System
  - Day/Night Double-Roller Shades

## DRIVER CONVENIENCE

- 3-Point Seat Belts at Driver & Front Passenger Seats
- AM/FM Radio w/CD Player, Satellite Radio- Ready w/Auxiliary Inputs
- Auto A/C Heater Combo
- Auxiliary Start Circuit
- Soft-Touch Automotive Dash
- Manual Roller shades at Driver/Passenger Window
- Cruise Control
- Dash Fans
- Power Front Windshield Shade
- Engine Cover Convenience Tray
- Intermittent Wiper Control
- Radio Switch Main/Auxiliary Power
- Tilt Steering Wheel
- Driver/Front Passenger Captain's Chairs w/Reclining Back/Slide Controls
- DSS Manual Lift Satellite Dish

## GALLEY

- Convection Stainless Steel Microwave Oven
  - 3-Burner, High-Output Cooktop
  - 12 cu.ft. 4-Door Refrigerator w/Icemaker
  - Brushed-Nickel Finish Cabinet Hardware
  - Double-Bowl Stainless Steel Sink
  - Fan-Tastic® Power Roof Vent
  - Radius Corner Cabinetry
  - Range Cover Flush Mount
  - Single-Lever Faucet w/Sprayer
  - Sink Cover/Cutting Board
  - Solid-Surface Countertops
  - Decorative Backsplash
  - Wastebasket
  - Slide-Out Dinette Bins w/Latches
- Optional*
- Free-Standing Dinette w/Credenza (32VS, 34A, 36D)
  - 3 Burner, High-Output Cooktop w/Oven

## BEDROOM

- Exclusive Dream Easy Mattress
  - 22" LCD HDTV (36D, 32VS)
  - 32" LED HDTV (34A, 36L)
  - Bedspread w/Décor Pillows
  - Headboard
  - Pleated Shades
  - Rear Speakers
- Optional*
- Queen Bed Air Mattress
  - Washer/Dryer (36D, 36L)
  - King Bed (34A)

## LIVING ROOM

- 32" LED HDTV (36D)
  - 40" LED HDTV (34A, 36L)
  - DVD Home Theater Sound System
  - Day/Night Pleated Shades
  - Free-Standing Euro Chair w/Ottoman (Select Models)
  - Residential Seat Styling
  - Sofa Bed w/Air Mattress
- Optional*
- Facing Dinette
  - Sofa Sleeper w/Air Mattress & Footrest (32VS, 36D)
  - 40" LED Mid-Ship TV (32VS)
  - 32" Front Overhead LED HDTV (32VS, 34A, 36L)
  - Free-Standing Recliner
  - Dual Monitors

## BATHROOM

- Porcelain Lavy Sink
- Lavy Faucet
- Fan-Tastic® Power Roof Vent
- Molded Tub/Shower Enclosure
- Porcelain Toilet w/Water Saver
- Toilet Tank San-T-Flush™ System

## SAFETY/CONVENIENCE (INTERIOR)

- Carbon Monoxide Detector/Alarm
- Entry Assist Handle
- Multiple Seatbelt Locations
- Propane Detector/Alarm
- Smoke Detector/Alarm
- 10 ABC Fire Extinguisher

## EXTERIOR THROUGHOUT

- 3 Graphic Color Choices
  - 3-Way Water Pump Switch
  - 5.5 kW Onan® MicroQuiet Generator
  - 50 Amp Service
  - Aluminum Tube Front Grill
  - Awning Rail/Drip Molding (Both Sides)
  - Dual-Pane Windows w/Screens
  - Dual Patio Receptacles
  - Fiberglass Front/Rear Caps
  - Full-Body Paint
  - Heated Water & Holding Tank Compartments
  - Mud Flaps
  - Park Cable Receptacle
  - Patio Awning - Electric
  - Single-Motor Windshield Wipers w/Wet Arm
  - Slide Topper Awnings
  - TV Antenna w/Signal Booster
  - Molded Front Quarter Panels
- Optional*
- Protective Front Mask
  - Exterior Entertainment Center (34A, 36L)
  - Rear Ladder

## AUTOMOTIVE

- 4-Point Automatic Levelers
- Trailer Hitch w/7-Pin Electrical Hook-Up
- Large One-Piece Bonded-in Windshield
- Ford® Chassis w/6.8L Triton® V10 Engine
- 22.5" Aluminum Wheels
- Underhood Utility Lights
- Halogen Headlights w/Polycarbonate Lens

## SAFETY/CONVENIENCE (EXTERIOR)

- Automotive Safety Glass
- Daytime Running Lights
- Hydraulic 4-Wheel Disk Brakes
- w/4-Wheel Anti-Lock Brakes
- Large, Heated Remote Rear-View Mirrors
- w/Side-View Cameras
- Porch Light (Doorside)
- Power Entry Step
- Entry Door w/Screen Door & Deadbolt Lock
- Color Rear-Vision Camera w/One-Way Audio
- Roof Ladder
- Utility Compartment w/Exterior Shower
- Winterizing Pick-Up Tube
- Lighted Entry Assist Handle

## STORAGE

- EZ Store Compartment on Living Area Slide-Outs
- Continuous One-Piece Compartment Bulb Seal
- Gas Lift Strut Supports (Select Locations)
- Side Swinging Luggage Doors (Select Locations)
- Pass-Through Storage (Select Models)
- Insulated Aluminum Luggage Doors w/Single Paddle Latch & Corrosion Resistant Steel Hinges
- Large Lighted Roto- Molded Polyethylene Compartments

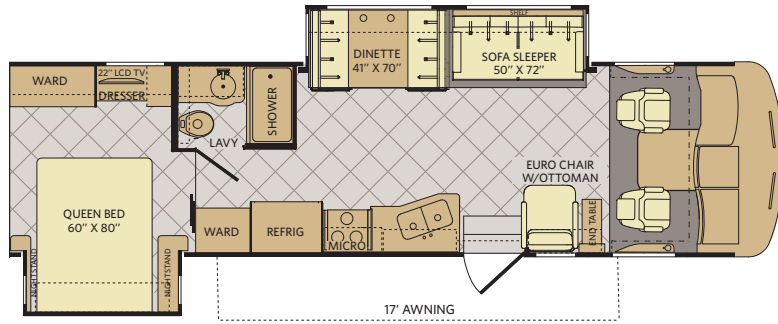
## BODY STRUCTURE

- Aluminum Interlocking Floor/Wall/Ceiling Framing
- Basement Floor Configuration
- Power Platform™ Construction (Fleetwood Exclusive)
- Radius Roof w/Ducted A/C
- Vacu-Bond® Upper/Lower Floors
- Vacu-Bond® Walls w/Smooth, High-Gloss Exterior Fiberglass



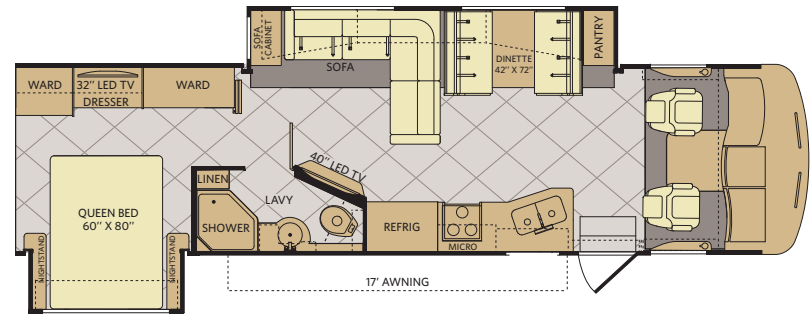
# SOUTHWIND FLOOR PLANS

32VS



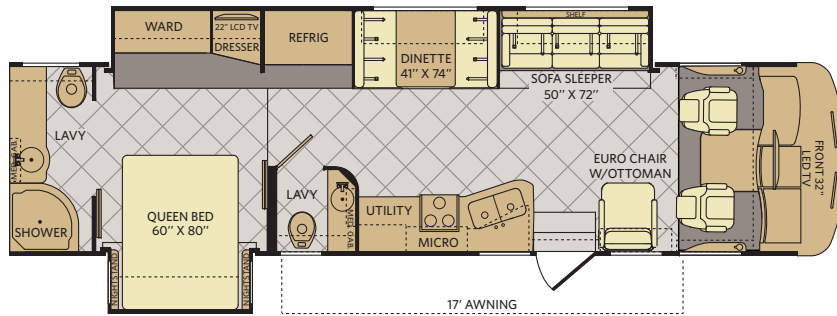
Available options: 087, 113, 192, 345, 490, 830, 833, 855

34A



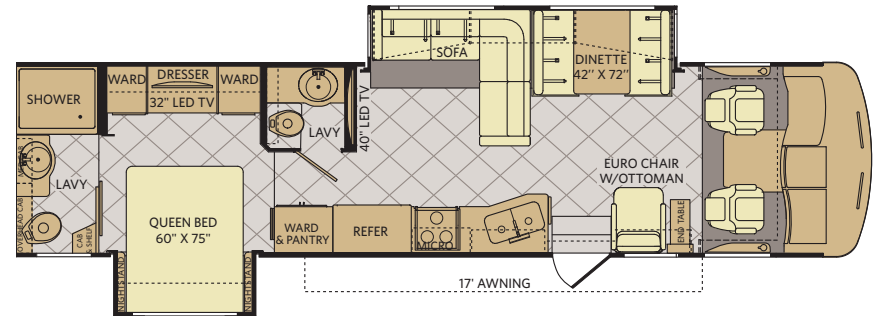
Available options: 087, 093, 113, 126, 139, 830, 833, 852, 855

36D



Available options: 113, 126, 192, 490, 830, 833, 855

36L



Available options: 087, 093, 113, 126, 490, 830, 855

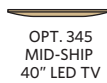
## FLOOR PLAN OPTIONS



OPT. 087  
FRONT 32\"/>



OPT. 093  
EXTERIOR  
ENTERTAINMENT  
CENTER



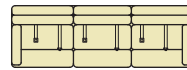
OPT. 345  
MID-SHIP  
40\"/>



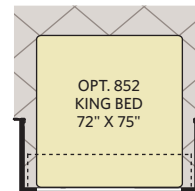
OPT. 113  
3-BURNER  
COOKTOP  
W/OVEN



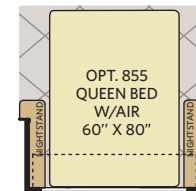
OPT. 139  
ELECTRIC  
FIREPLACE



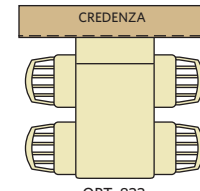
OPT. 192  
SOFA SLEEPER  
W/AIR MATTRESS  
& FOOTREST



OPT. 852  
KING BED  
72\"/>



OPT. 855  
QUEEN BED  
W/AIR  
60\"/>



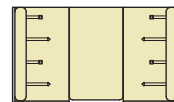
OPT. 833  
FREE-STANDING  
DINETTE  
WITH CREDENZA



OPT. 126  
WASHER/DRYER



OPT. 490  
FREE STANDING  
RECLINER



OPT. 830  
FACING  
DINETTE

# WEIGHTS & MEASUREMENTS

CHASSISPOWER	PLATFORM*			
	MODELS	32VS	34A	36D
Engine Displacement (liters)	6.8	6.8	6.8	6.8
Wheelbase (inches)	208"	208"	228"	228"
GVWR (lbs) <sup>1</sup>	22,000	22,000	22,000	22,000
Front GAWR (lbs) <sup>2</sup>	8,000	8,000	8,000	8,000
Rear GAWR (lbs) <sup>2</sup>	15,000	15,000	15,000	15,000
GCWR (lbs) <sup>3</sup>	26,000	26,000	26,000	26,000
Hitch Rating Weight (lbs) <sup>†,††</sup>	5,000	5,000	5,000	5,000
Tongue Weight (lbs) <sup>†</sup>	500	500	500	500
Fuel Capacity (gal)	80	80	80	80

## POWER PLATFORM® CHASSIS

**Model:** Ford®  
**Engine:** 6.8L Triton V10  
**Transmission:** Ford®, 5-Speed, Automatic w/Overdrive

**Alternator:** 175 Amp  
**Torque:** 457 lb-ft @ 3,250 RPM  
**Horsepower:** 362HP

## DIMENSIONS & CAPACITIES

MODELS	32VS	34A	36D	36L
Overall Length (inches) <sup>4</sup>	33' 5"	34' 11"	36' 5"	36' 11"
Overall Height (with A/C)	12' 10"	12' 10"	12' 10"	12' 10"
Overall Width (maximum) <sup>5, 6</sup>	102"	102"	102"	102"
Interior Height (maximum)	84"	84"	84"	84"
Interior Width (maximum)	96"	96"	96"	96"
Interior Storage (cu. ft.)	144	123	145	140
Exterior Storage (cu. ft.)	112	115	105	118
Fresh Water Holding Tank (gal)	80	80	80	80
Grey Water Holding Tank (gal)	58	58	58	58
Black Water Holding Tank (gal)	42	42	42	42
Appliance Propane Tank (gal) (WC) <sup>7</sup>	25	25	25	25
Water Heater Tank (gal)	10	10	10	10

## ADDENDUMS

- GVWR (Gross Vehicle Weight Rating) is the maximum permissible weight of this fully loaded motorhome. The GVWR is equal to or greater than the sum of the (UVW) unloaded vehicle weight plus the (OCCC) occupant cargo-carrying capacity.
- GAWR (Gross Axle Weight Rating) is the maximum permissible loaded weight a specific axle is designed to carry.
- GCWR (Gross Combined Weight Rating) is the value specified by the motorhome manufacturer as the maximum allowable loaded weight of this motorhome with its towed vehicle. Towing and braking capacities may be different. Refer to Fleetwood and chassis manufacturer's manuals for complete information.
- Length measured from front bumper to rear bumper (excludes accessories).
- Excludes safety equipment and awnings.
- Motorhomes feature a body width over 96" which will restrict your access to certain roads. Before purchasing, you should research any state and/or province road laws which may affect your usage.
- Tank manufacturer's listed water capacity (WC). Actual propane capacity is 80% of water listing as required by the safety code.

† The chassis manufacturer recommends the installation of a supplemental brake control system to activate the brakes on the vehicle or trailer you are towing. Hitch receiver ratings expressed are maximum for the hitch receiver installed and may require the purchase of additional equipment that is dependent on the weight of the towed load. Consult with hitch receiver manufacturer for further information.

†† Minimum Towable Load is the available weight, up to GCWR, when the coach is fully loaded to maximum GVWR. However, if the coach is loaded to something less than maximum GVWR, that extra available weight can be added to your Towable Load. For example, if your coach is loaded to 1000lbs less than maximum GVWR, your Towable Load increases accordingly.

\* UVW and OCCC are found on the label containing the federal certification tag in each RV.

**IMPORTANT—PLEASE READ:** Product information, photography and illustrations included in this publication were as accurate as possible at the time of printing. For further product information and changes, please visit our website at [www.fleetwoodrv.com](http://www.fleetwoodrv.com) or contact your local Fleetwood RV dealer. Prices, materials, design and specifications are subject to change without notice. All weights, fuel, liquid capacities and dimensions are approximate. Fleetwood RV has designed its recreational vehicles to provide a variety of uses for its customers. Each vehicle features optimal seating, sleeping, storage and fluid capacities. The user is responsible for selecting the proper combination of loads (i.e., occupants, equipment, fluids, cargo, etc.) to ensure that the vehicle's capacities are not exceeded.



## WHY FLEETWOOD RV?



### Quality

There's no cutting corners. Skilled craftsmen build every Fleetwood RV for maximum durability and longevity.



### Trust

More people trust Fleetwood RV. After all, we've spent over 60 years perfecting RVs, earning the loyalty of generations of RVers.



### Passion

We're truly passionate about the RV lifestyle. Fleetwood RV was founded by RV enthusiasts, and that tradition continues today.



### Safety

You've got precious cargo. So we've engineered dozens of innovative safety features into our motor homes to give you more peace of mind.



### Service

Help is nearby with 24/7 emergency Fleetwood RV Trusted Roadside Assistance\*. And when you need an upgrade or repair, you'll find Fleetwood RV dealers all across North America ready to assist you.



### Warranty

Exclusive RV OwnerCare warranty. See your Fleetwood RV dealer for details.

\* All 2014 Fleetwood RV motorhomes include a 1-year emergency roadside assistance membership. For complete info, see your Fleetwood RV dealer.

\*\*For complete info, see your Fleetwood RV dealer.



Visit [FleetwoodRV.com](http://FleetwoodRV.com) and look for FleetwoodRV iPad® apps in the Mac App Store.

### RV OWNERCARE\*\*

Limited one-year/15,000-mile coach warranty and three-year/45,000-mile structural warranty, whichever occurs first, and it is fully transferable for the first 12 months. RV OWNERCARE is one of the RV industry's most comprehensive programs and includes systems, appliances, components and construction, with no deductible and no service charge. RV OWNERCARE coverage is provided by a company that will be around in the future to service your needs. See your nearest Fleetwood RV dealer for a full explanation of benefits and restrictions.

### CONTACT US

To locate a dealer near you, visit our website at [www.fleetwoodrv.com](http://www.fleetwoodrv.com) or call 1-800-322-8216. We can also be contacted at Fleetwood RV Customer Relations, P.O. Box 1007, Decatur, IN 46733.

### FLEETWOOD MOTORHOME ASSOCIATION

As a Fleetwood RV owner, you're invited to become a member of the Fleetwood Motor Home Association (FMA). Becoming a member is the perfect way to meet other Fleetwood owners who love to travel across American and share in the RV lifestyle. Visit the FMA website at [www.fma4fun.org](http://www.fma4fun.org) to learn more and join the fun.



FLEETWOOD RV IS AN ALLIED SPECIALTY VEHICLE COMPANY.

### YOUR LOCAL FLEETWOOD RV DEALER IS:

©2013. Fleetwood RV, Inc.  
Printed in the USA. Inventory Control Number SW14B1, 08/13.  
Model Year 2014, First Edition.