

ZINGER

BY CROSSROADS



ZINGER
BY CROSSROADS

CROSSROADS®
RECREATIONAL VEHICLES

COMFORTABLE LIVING

Offering a spacious and inviting feel, Zinger has been designed for your comfort. Residential style furniture, modern appointments, and 7 ft. ceilings add to the upgraded appearance. Storage is always a premium and Zinger provides abundance. Our floorplans consistently offer more cabinets and drawers for all your necessities.



ZT26KS in the Coco Decor



Kitchen in the ZT26KS



Bunks in the ZT28BH & ZT26KS



Bedroom in the ZT32DB



Bunkroom in the ZT32DB with trundle bed



ZT32DB in the Kahlua Decor

INTERIOR FEATURES

From seating and sleeping arrangements to plush furniture and home-like amenities, Zinger delivers on high-end value. The bunkhouse models are perfect for families. Kids love having their own space. Fourteen floor plans present a multiple choice of seating and sleeping arrangements. A popular choice is the U-shaped dinette, which seats seven around the table. After dinner, with a few simple adjustments, it becomes an extra bed.



ZT30RK



ZT31SB



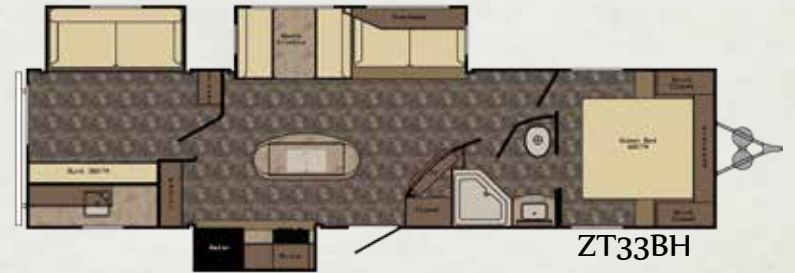
ZT32DB



ZT32QB



ZT32RE



ZT33BH



ZT38FL



ZT39TS

STANDARD & OPTIONS

STANDARDS

LIVINGROOM

- *Premium residential furniture
- *Decorative glass in sofa slide-out cabinet doors
- *Designer valances with hard lambrequin legs
- *Chair rail in slide-out
- *7' Interior ceiling height
- *6' 1" Ceiling height in slide-out
- *Decorative lights (VBM)
- *Wood slide-out fascia
- *Sleeper sofa
- *AM/FM/CD/DVD Bluetooth stereo system
- *Three décor choices
- *Flush floor slide-out with large dinette windows
- *Generous storage
- *Storage drawers below booth dinette

KITCHEN

- *Super booth dinette (VBM)
- *Range hood with light and exhaust fan
- *High rise faucet
- *Wall mounted systems monitor panel
- *Steel ball bearing drawer guides (rated for 70#'s)
- *Maple cabinet doors
- *Maple cabinet drawers
- *Microwave oven
- *Range with oven
- *6 cu. Ft. Double door refrigerator

BEDROOM

- *60" X 74" Mattress
- *TV hook-up
- *Coordinated window treatments
- *Night stands with outlets on each side

BATHROOM

- *Large parchment color lavatory bowl
- *Spacious shower/tub & one-piece surround
- *Foot flush white toilet
- *Linen storage (VBM)
- *Mirrored medicine cabinet
- *Glass shower door & neo angle shower (VBM)
- *Shower curtain with curved shower track (VBM)
- *Skylight over tub

EXTERIOR

- *Infused grey front & rear walls
- *Rounded, aerodynamic front end
- *54 gallon fresh water tank
- *Tinted safety glass windows
- *Radial tires - nitrogen filled
- *Easy open entry step
- *Bumper with drain hose storage and end caps
- *(2) Marine grade exterior speakers
- *Molded rain gutters with 3" drip spouts
- *Totally enclosed and heated underbelly
- *Outside shower

CONSTRUCTION

- *One-piece rubber roof with 3" rolled roof wrap
- *3/8" walkable roof decking
- *16" OC truss rafters with 4 1/2" crown
- *R-7 Rated fiberglass roof insulation
- *Rain gutters along entire roof line
- *13,500 Ducted A/C
- *25,000 BTU floor ducted furnace (35,000 in 30RK and larger)
- *16" OC stud placement in sidewalls, endwalls and slide rooms
- *5/8" floor decking
- *R-7 Rated fiberglass sidewall insulation
- *Steel I-beam frame
- *R-7 Rated fiberglass floor insulation
- *Maximum amount of linoleum throughout
- *Moisture barrier wrapped floor
- *30" Radius entry door with screen (main door)
- *Secure Stance axles (VBM)

CONVENIENCE PACKAGE (STANDARD)

- *3-Burner range with oven
- *TV antenna
- *Tub surround
- *Smoke detector
- *LP detector
- *Diamond-plate stone guard
- *13,500 BTU A/C
- *Awning
- *Microwave
- *Drawers under booth dinette
- *Power vent in bath
- *Swing-out assist handle
- *6 gallon gas/electric DSI water heater
- *10 gal gas/electric DSI water heater (38FL & 39TS)
- *Night shades
- *Stabilizer jacks
- *Sink covers
- *Black tank flush

OPTIONS

- *LED TV
- *Tri-fold Hide-A-Bed (IPO jack knife and trundle bed in bunk room, 31SB, 32DB & 33BH)
- *Skylight in Kitchen/Living room
- *Free standing dinette with 4/ chairs
- *(2) swivel recliners IPO sofa (32RE only)
- *8 cu. Ft. Refrigerator
- *Bi-fold range cover
- *Solid surface countertops with sink covers
- *Denver Supreme Upgrade Mattress
- *Chrome center caps
- *Aluminum rims
- *Electric awning
- *Fiberglass front cap
- *Rear ladder
- *Bumper mount grill
- *15,000 BTU A/C
- *50 AMP service with 2nd A/C prep (50 AMP standard on 38FL & 39TS)
- *2nd A/C in bedroom (must have 50 AMP service)
- *Spare tire and carrier
- *Power tongue jack
- *Upgraded Insulation
- *Tri-fold Hide-A-Bed (IPO jack knife / Living Room)

VBM: Varies By Model

DISCLAIMER: Product information is as accurate as possible at the date of publication of this brochure. All features, floorplans, and specification in this brochure are subject to change without notice. Please also consult CrossRoads RV's website at www.crossroadsrv.com for more current product information and specifications. Tow Vehicle Disclaimer. CAUTION: Owners of CrossRoads recreational vehicles are solely responsible for the selection and proper use of tow vehicles. All customers should consult with a motor vehicle manufacturer or their dealer concerning the purchase and use of suitable tow vehicles for CrossRoads RV products. CrossRoads RV disclaims any liability or damages suffered as a result of the selection, operation, use or misuse of tow vehicle. CROSSROADS RV'S LIMITED WARRANTY DOES NOT COVER DAMAGE TO THE RECREATIONAL VEHICLE OR TOW VEHICLE AS A RESULT OF THE SELECTION, OPERATION, USE OR MISUSE OF THE TOW VEHICLE.



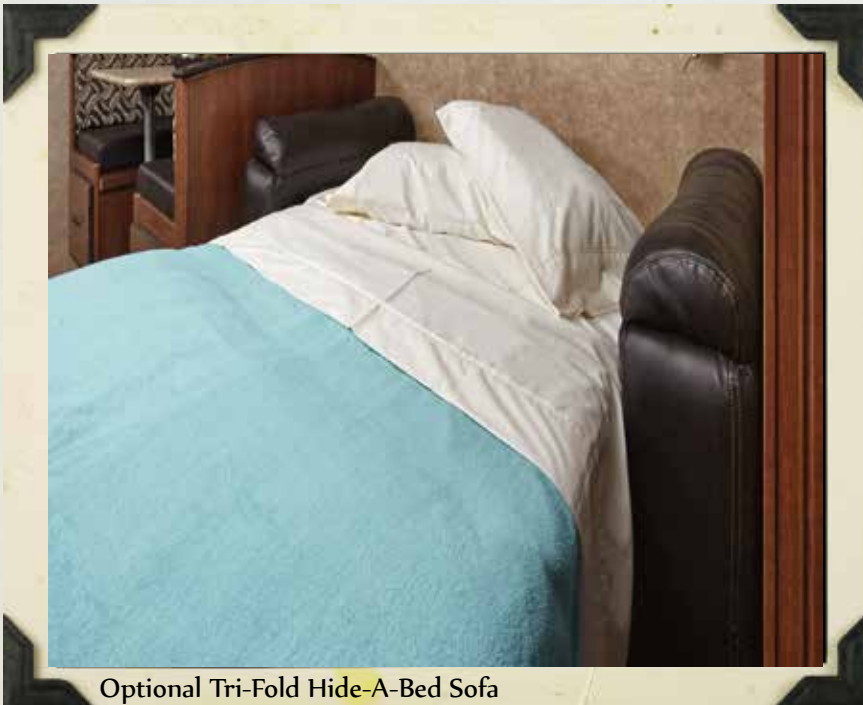
Optional Power Awning with LED Light Strip



LP Quick Connect & Bolted on Stabilizer Jacks



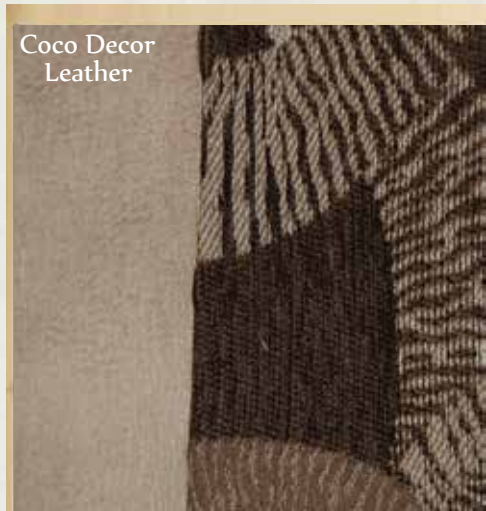
Secure Stance Axle and Optional Aluminum Rims



Optional Tri-Fold Hide-A-Bed Sofa



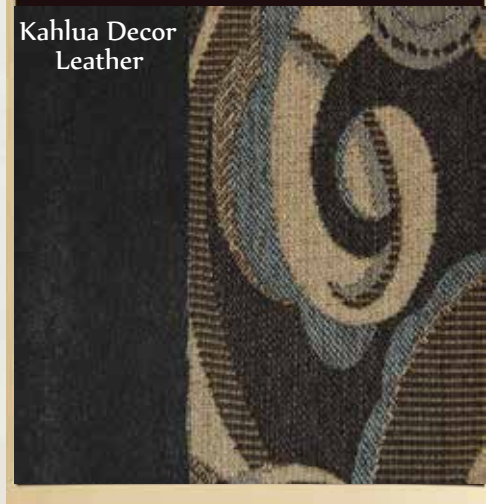
Lighted Entry Step



Coco Decor
Leather



Java Decor
Fabric



Kahlua Decor
Leather

ZINGER

BY CROSSROADS

Buy Local

Where you purchase your recreational vehicle is ultimately your decision but CrossRoads urges you to consider buying at your local dealer. Dealers are part of your community, providing jobs and contributing to your local economy. These dealers are under obligation to provide warranty service for products they sell, but are not legally required to service products purchased from other dealers. You enjoy customer priority. Dealerships generally service their purchasing customers first, others may experience long delays and miss opportunities to use their RV. What is it worth for you to have a dealership's full attention and motivation to satisfy you when you need service in a timely manner? Why not stay close to home?

CROSSROADS[®]
RECREATIONAL VEHICLES

Your Authorized CrossRoads Dealer: