

Rockwood

ULTRA LITE TT & FW    ULTRA V    MINI LITE    ROO



# Rockwood

ULTRA LITE TRAVEL TRAILERS & FIFTH WHEELS    ULTRA V    MINI LITE    ROO





## Over 40 Years of Excellence

**THE TRADITIONAL ROCKWOOD TRAVEL TRAILERS, FIFTH WHEELS AND CAMPING TRAILERS CONTINUE TO PROVIDE UNSURPASSED VALUE AND COMFORT.**

Since 1974 Rockwood has been building on a rich tradition of providing superior value and service while remaining in tune with our customer's preferences. As a result, Rockwood has become the ultimate luxury product in the light weight trailer market, proudly showcasing more innovative floor plans, appealing features and refined interior appointments than any others in its class.



Rockwood is committed to insuring that our customers enjoy their camping experiences. Through the utilization of our experienced work force, "state of the art" lamination facility and detailed production assembly processes our aim is to continue to provide our customers with the best built product possible at an unmatched value.



ASPEN / DRIFTWOOD

2604WS  
STANDARD DÉCOR

The Ultra Lite trailer's spacious interiors offer numerous windows, 80" vaulted ceilings with directional vented air conditioning and extensive interior LED lighting throughout. Rich with appointments like the flush mount Stonecast sink, a stove top with glass cover, 22" oven and distinctive Maple or Driftwood cabinets with solid wood doors and drawer fronts throughout add to the tremendous value provided.



Featuring an aluminum framed with vacuum bonded construction, high gloss fiberglass exterior and deluxe graphics, the Ultra Lite and Ultra V are among the best constructed, most well insulated trailers available on the market today.

## THE EMERALD PACKAGE. THE TRADITION CONTINUES.

To continue this tradition, Rockwood Ultra Lites offer a group of appealing features to enhance the appearance of the Ultra Lite series. The Emerald package adds style and luxury as demonstrated in the picture of the 2715VS on pages 4 and 5. This option package includes: Oyster colored fiberglass, Deep tinted frameless bonded windows, Slam latches on most storage doors exterior step lighting, aluminum wheels, upgraded slide fascia and solid surface Corian® kitchen counter tops.



Emerald Package Exterior



BILTMORE / MAPLE

2618VS  
STANDARD DÉCOR



ROCKWOOD

# Ultra V

THERE ARE ADVANTAGES TO INNOVATIVE DESIGN.

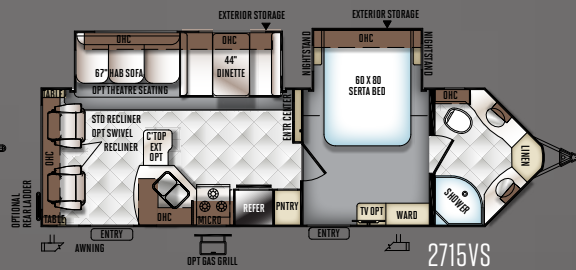
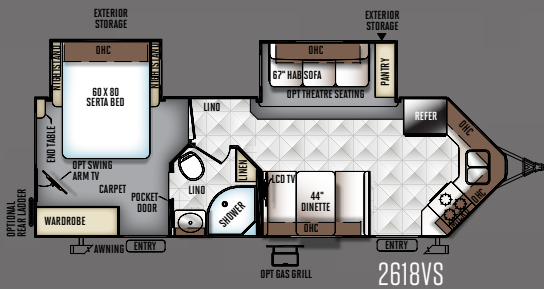
Thanks to the "V" nose design, every possible space of the Ultra V models are used to maximize interior room, functionality and storage space. These aerodynamic, six-sided vacuum-bonded trailers can be towed efficiently by a wide range of vehicles on the market. A variety of standards and options allows the potential for customizing to satisfy your individual preferences.



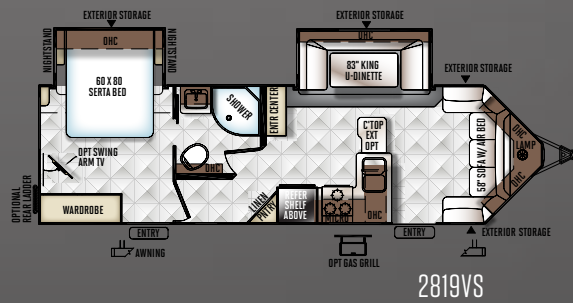
4

ASPEN / MAPLE

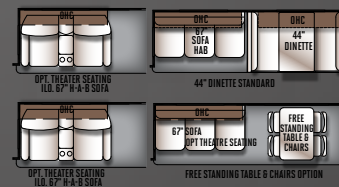
2715VS  
EMERALD PACKAGE



MODEL	2618VS	2715VS	2811VS	2819VS
UNLOADED VEHICLE WEIGHT *	6259	6689	6447	6463
BASE DRY HITCH WEIGHT	708	840	824	806
BASE DRY AXLE WEIGHT	5492	5790	5564	5598
CARGO CAPACITY	1449	1551	1577	1543
LENGTH (HITCH TO BUMPER)	29' 9"	31' 10"	31' 9"	31' 9"
WIDTH	96"	96"	96"	96"
HEIGHT WITH A/C	132"	131"	132"	132"
INTERIOR HEIGHT	80"	80"	80"	80"
FRESH WATER CAPACITY	43 gal	43 gal	43 gal	43 gal
GRAY WATER CAPACITY	74 gal	74 gal	37 gal	37 gal
BLACK WATER CAPACITY	37 gal	37 gal	37 gal	45 gal



SUPER SLIDE OPTIONS



DINETTE SLIDE OPTION



The Unloaded Vehicle Weight (UVW) listed represents the weight of one trailer with that model's standard equipment including the content of specified Option Packages. \* See back cover for further specification definitions.



ROCKWOOD

# Ultra Lite Travel Trailers

**YOU'LL LOVE WHAT YOU FIND IN OUR FLOOR PLANS.**

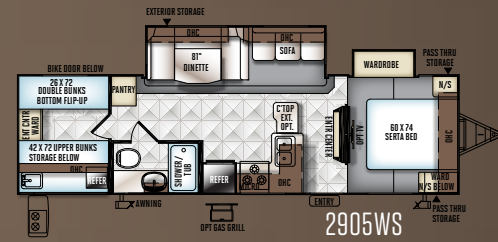
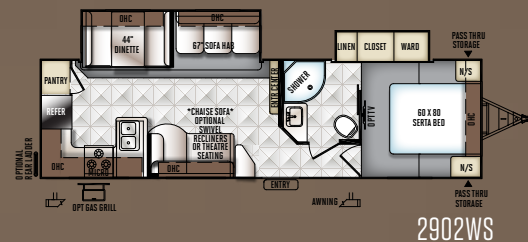
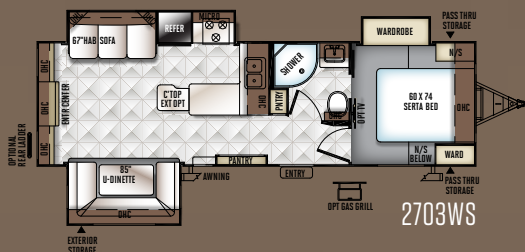
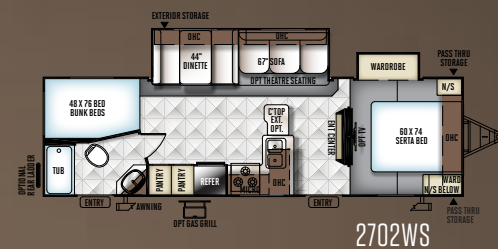
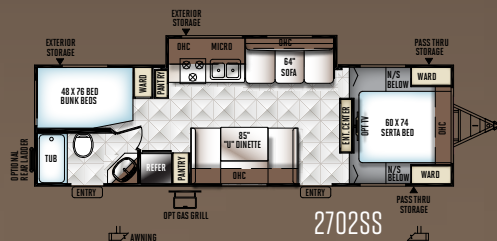
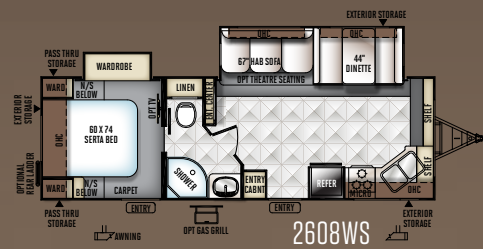
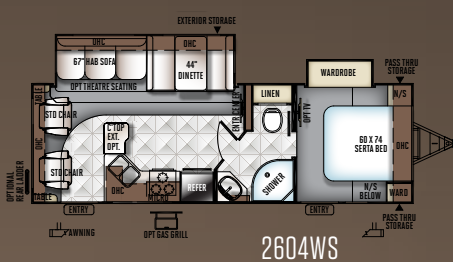
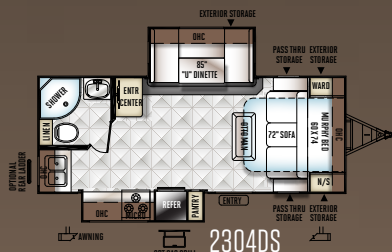
Our trailers are packed full of quality features in order to bring to you one of the best values in the light weight market. There are spacious flush floor slides, comfortable stylish sofas and wide dinettes with easily adjustable legs. We only use our best inside the "Ultra Lite" series.



6

BILTMORE / DRIFTWOOD

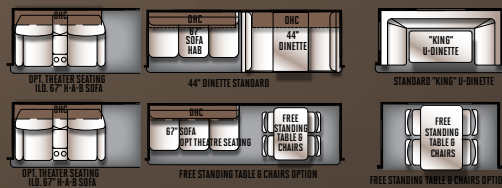
**2902WS**  
EMERALD PACKAGE



MODEL	2304DS	2604WS	2607A	2608WS	2702SS	2702WS	2703WS	2902WS	2905WS	2906WS
UNLOADED VEHICLE WEIGHT *	5198	5875	5909	5876	5645	6309	6618	6690	6596	6965
BASE DRY HITCH WEIGHT	598	662	814	720	648	802	734	674	830	816
BASE DRY AXLE WEIGHT	4538	5154	5036	5097	4938	5448	5825	5863	5801	6090
CARGO CAPACITY	1403	1387	1505	1444	1403	1493	1516	1478	1540	1551
LENGTH (HITCH TO BUMPER)	25' 1"	29' 11"	31' 3"	29' 11"	32' 5"	32' 5"	32' 3"	33' 9"	33' 9"	33' 11"
WIDTH	96"	96"	96"	96"	96"	96"	96"	96"	96"	96"
HEIGHT WITH A/C	132"	132"	132"	132"	131"	132"	132"	131"	131"	132"
INTERIOR HEIGHT	80"	80"	80"	80"	80"	80"	80"	80"	80"	80"
FRESH WATER CAPACITY	43 gal	43 gal	43 gal	43 gal	43 gal	43 gal	43 gal	43 gal	3 gal	43 gal
GRAY WATER CAPACITY	37 gal	37 gal	74 gal	74 gal	37 gal	37 gal	37 gal	74 gal	37 gal	37 gal
BLACK WATER CAPACITY	37 gal	37 gal	37 gal	37 gal	37 gal	37 gal	37 gal	37 gal	37 gal	37 gal

The Unloaded Vehicle Weight (UVW) listed represents the weight of one trailer with that model's standard equipment including the content of specified Option Packages.  
 \* See back cover for further specification definitions.

SUPER SLIDE OPTIONS



DINETTE SLIDE OPTION





ASPEN / DRIFTWOOD

2440WS  
EMERALD PACKAGE



ROCKWOOD

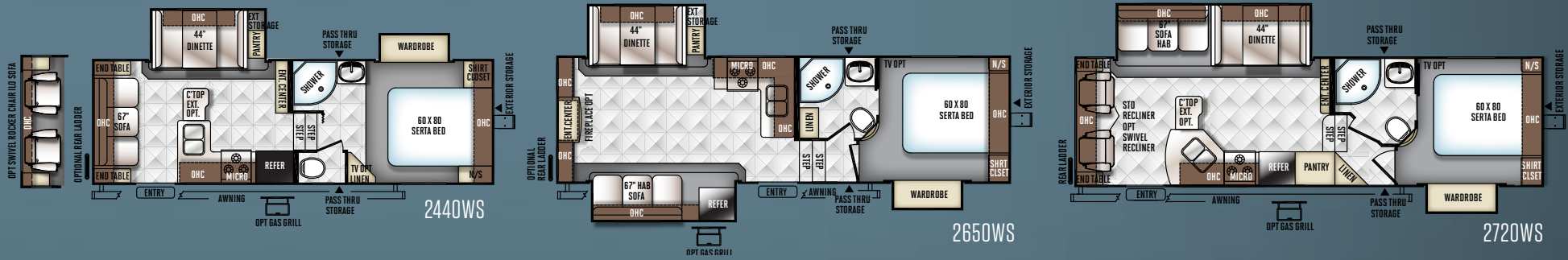
# Ultra Lite Fifth Wheels

## SO YOU DIDN'T THINK YOU COULD PULL A FIFTH WHEEL?

The Rockwood Ultra Lite Fifth Wheel models provide light weight alternatives with a variety of floor plans, features and options for owners of 1/2 ton pick up trucks. Equipped with a standard Reese Revolution Hitch, you can tow with almost any size truck bed. Take a close look and you will see that our Ultra Lite fifth wheels have been custom designed with the best in styling and amenities while keeping your towing needs in mind.



ULTRA LITE FIFTH WHEELS

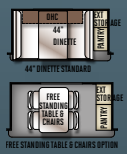


MODEL	2440WS	2650WS	2720WS
UNLOADED VEHICLE WEIGHT *	6397	7303	7400
BASE DRY HITCH WEIGHT	1244	1300	1498
BASE DRY AXLE WEIGHT	5094	5944	5843
CARGO CAPACITY	1447	1497	1498
LENGTH (HITCH TO BUMPER)	27'	29' 8"	30' 1"
WIDTH	96"	96"	96"
HEIGHT WITH A/C	150"	150"	150"
FRESH WATER CAPACITY	43 gal	43 gal	43 gal
GRAY WATER CAPACITY	37 gal	37 gal	74 gal
BLACK WATER CAPACITY	37 gal	37 gal	37 gal

### SUPER SLIDE OPTIONS



### DINETTE SLIDE OPTION



Sapphire or Emerald Package Available



With the Reese Revolution standard on all Rockwood Fifth Wheel models, you can tow with almost any size truck bed and have more free space to carry your camping gear.

The Unloaded Vehicle Weight (UJV) listed represents the weight of one trailer with that model's standard equipment including the content of specified Option Packages.  
\* See back cover for further specification definitions.

ROCKWOOD

# Roos

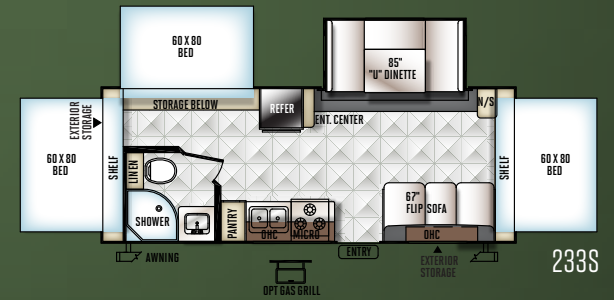
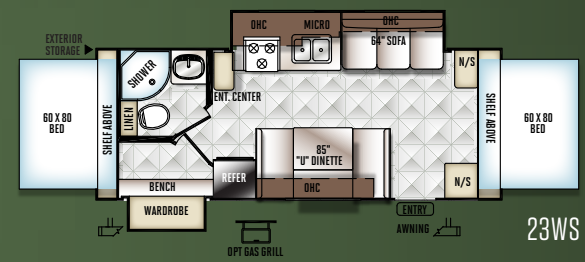
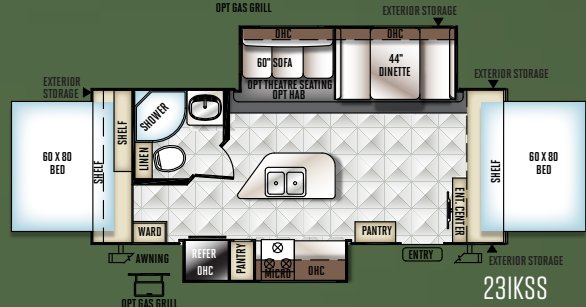
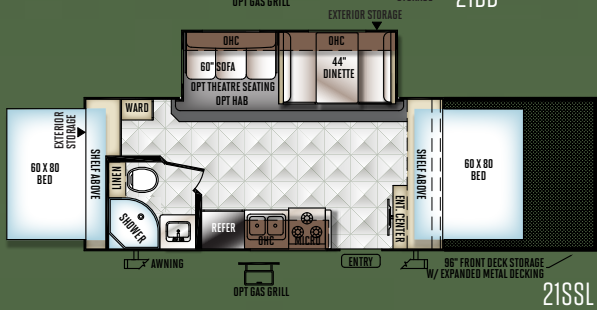
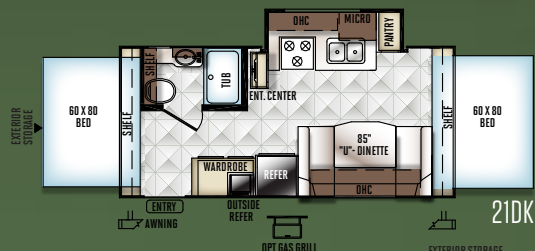
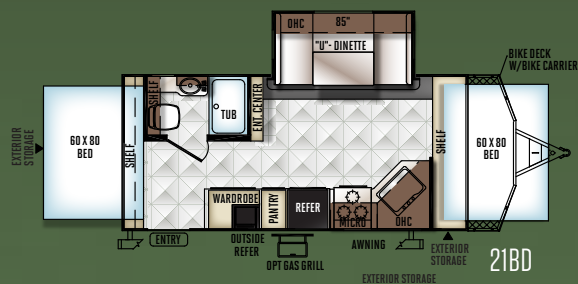
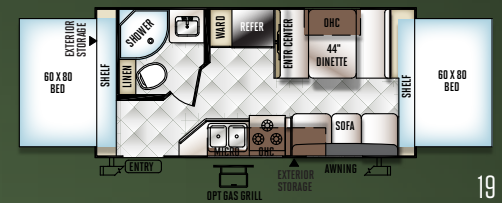
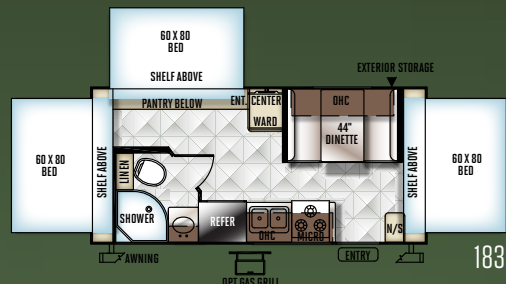
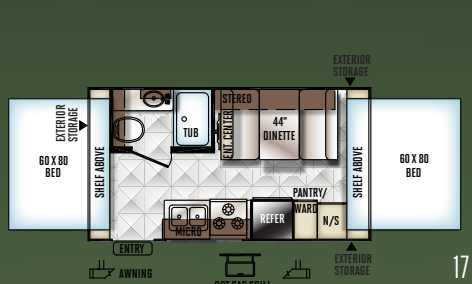
**A VALUE THAT'LL MAKE YOU JUMP! WE HAVE A TRAILER JUST FOR YOU.**

Whether you are interested in the expanded interior space provided by the spacious drop down bunks with heated innerspring mattresses or the ability to bring an ATV along with the feel of a traditional trailer, the Rockwood Roo will deliver with the quality and amenities you expect. Rockwood brings the necessities of residential living on the campsite.



SYDNEY / DRIFTWOOD

23WS



MODEL	17	183	19	21BD	21DK	21SS	21SSL	23KSS	23WS	233S
UNLOADED VEHICLE WEIGHT *	3149	3862	3654	4744	4015	4668	5514	5349	4841	4786
BASE DRY HITCH WEIGHT	346	392	394	698	586	504	398	658	500	660
BASE DRY AXLE WEIGHT	2803	3432	3222	4008	3391	4126	5078	4653	4303	4088
CARGO CAPACITY	1197	930	1140	1454	1471	1436	1584	1309	1459	1474
LENGTH (HITCH TO BUMPER)	18' 9"	21' 3"	21' 3"	23' 11"	21' 9"	22' 10"	32' 2"	25' 3"	25' 2"	25' 3"
TRAILER LENGTH (OPEN)	23' 1"	25' 7"	25' 7"	27' 10"	26' 1"	27' 2"	36' 4"	29' 7"	29' 6"	29' 7"
WIDTH	96"	96"	96"	96"	96"	96"	96"	96"	96"	96"
HEIGHT WITH A/C	122"	123"	123"	129"	124"	129"	131"	132"	132"	129"
INTERIOR HEIGHT	80"	80"	80"	80"	80"	80"	80"	80"	80"	80"
FRESH WATER CAPACITY	43 gal	43 gal	43 gal	43 gal	43 gal	43 gal	43 gal	43 gal	43 gal	43 gal
GRAY WATER CAPACITY	30 gal	30 gal	30 gal	30 gal	30 gal	30 gal	30 gal	30 gal	30 gal	30 gal
BLACK WATER CAPACITY	30 gal	30 gal	30 gal	30 gal	30 gal	30 gal	30 gal	30 gal	30 gal	30 gal

FREE STANDING TABLE & CHAIRS OPTION



OPT FOR 21BD, 21SS, 21SSL, 23KSS & 233S



Sapphire Package Exteriors

The Unloaded Vehicle Weight (UJV) listed represents the weight of one trailer with that model's standard equipment including the content of specified Option Packages. \* See back cover for further specification definitions.



Murphy Bed in Down Position



Murphy Bed in Stored Position

ROCKWOOD

# Mini Lites

**TOWING A TRAILER DOESN'T REQUIRE A TRUCK ANYMORE.**

When towing size and weight are your focus. You will find that these specially designed Mini Lite models offer flexible floor plans that provide you with more comfort and amenities that you would expect all within the towing capacity of many small SUV's and Mini Vans



ASPEN / MAPLE



1905



2502KS

BILTMORE / MAPLE



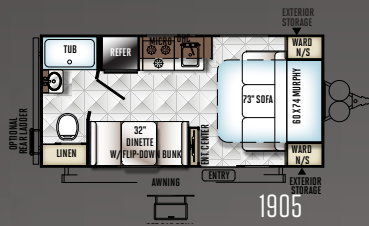
2502KS with Sapphire Package

**CLEARLY THE BEST CHOICE  
IN A LIGHT WEIGHT TRAILER.**

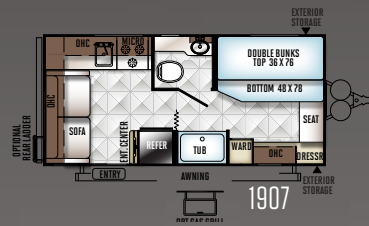
As with every series designed by Rockwood, a premium is placed on superior craftsmanship and unmatched value. By combining light weight floor plans with residential features you wouldn't expect to find, the Mini Lite surpasses other products in its class.



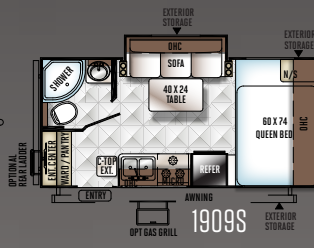
1905 with Sapphire Package Exterior



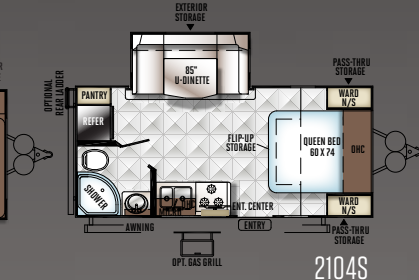
1905



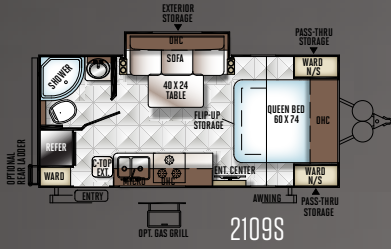
1907



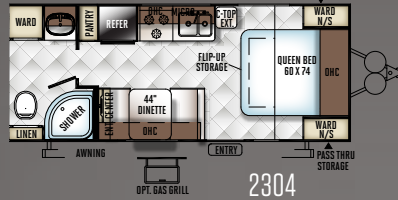
1909S



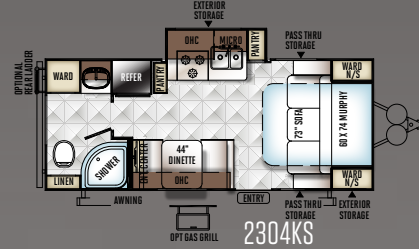
2104S



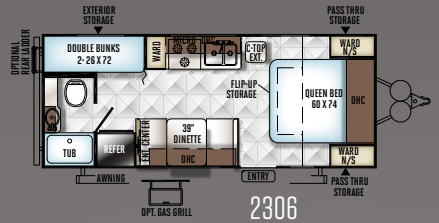
2109S



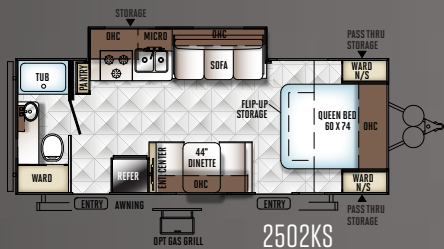
2304



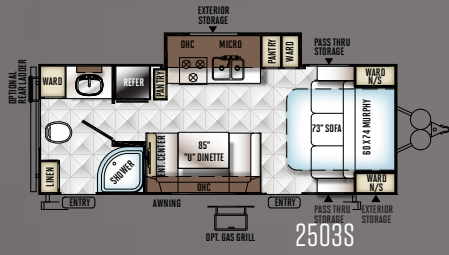
2304KS



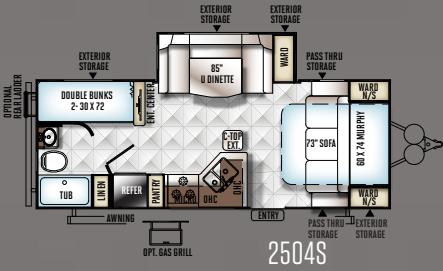
2306



2502KS



2503S

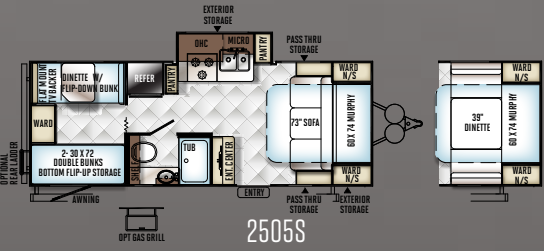


2504S

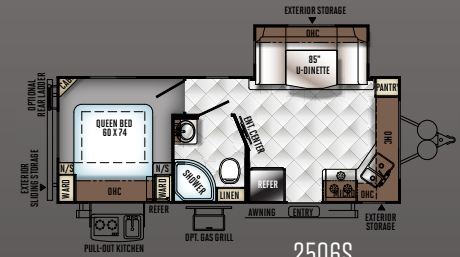


2505S

MURPHY BED  
OPTION: 2104S,  
2304 & 2306



2505S



2506S

MODEL	1905	1907	1909S	2104S	2109S	2304	2304KS	2306	2502KS	2503S	2504S	2505S	2506S
UNLOADED VEHICLE WEIGHT *	3148	3150	3510	4150	4037	3964	4189	3890	4400	4514	4876	4463	4791
BASE DRY HITCH WEIGHT	397	386	462	536	456	585	576	516	527	625	512	529	560
BASE DRY AXLE WEIGHT	2692	2705	2989	3555	3522	3320	3554	3315	3814	3890	4305	3875	4172
CARGO CAPACITY	749	736	452	1386	1219	1421	1387	1426	1327	1311	1436	1266	1469
LENGTH (HITCH TO BUMPER)	20' 4"	20' 4"	20' 4"	21' 7"	21' 7"	23' 7"	23' 7"	23' 7"	25' 7"	25' 7"	25' 9"	25' 7"	25' 9"
WIDTH	96"	96"	96"	96"	96"	96"	96"	96"	96"	96"	96"	96"	96"
HEIGHT WITH A/C	123"	123"	122"	130"	123"	123"	123"	123"	122"	123"	128"	124"	128"
INTERIOR HEIGHT	80"	80"	80"	80"	80"	80"	80"	80"	80"	80"	80"	80"	80"
FRESH WATER CAPACITY	43 gal	43 gal	43 gal	43 gal	43 gal	43 gal	43 gal	43 gal	43 gal	43 gal	43 gal	43 gal	43 gal
GRAY WATER CAPACITY	30 gal	30 gal	30 gal	30 gal	30 gal	30 gal	30 gal	30 gal	30 gal	30 gal	30 gal	30 gal	30 gal
BLACK WATER CAPACITY	30 gal	30 gal	30 gal	30 gal	30 gal	30 gal	30 gal	30 gal	30 gal	30 gal	30 gal	30 gal	30 gal

The Unloaded Vehicle Weight (UVW) listed represents the weight of one trailer with that model's standard equipment including the content of specified Option Packages.  
\* See back cover for further specification definitions.

ROCKWOOD

# Popular Features

JUST A FEW FEATURES THAT MAKE US GREAT.



- A Power Awning with Adjustable Rain Dump and LED Lighting** (UL/UV: Std/Opt, ML and R: Opt.)
- B Solar Panel Prep** (Std. All Models) The Zamp 40 amp. portable solar panel shown is sold separately.)
- C 32" LCD w/ 5.1 Dolby Speaker System with "Bluetooth" Technology.** (Opt. UL/UV: Select Models)
- D Rear Camera Prep.** (Std. All Models) The Furrion observation camera system with digital wireless technology is sold separately.
- E Under mount Stonecast Kitchen Sinks** (Std. in Most Models)
- F Water Filtration System** (Std. Opt.)
- G Outside Shower** (Std.)
- H Heated holding tanks with 12 volt heat pads secured to the bottom** (Opt.)
- I Radius Glass Door Shower** (N/A Models w/ Tub bases)
- J Swivel Rocker Chair Fabric Matched to Sofa Shown w/ Aspen Decor** (Std. 2604WS) (Opt. 2440WS ILO Sofa Only)
- K Push Back Recliner Fabric Matched to Sofa Shown w/ Aspen Decor** (2715VS, 2710WS Only)(N/A 2604WS)
- L Theatre seating fabric matched to sofa shown w/ Aspen decor** (Std. 2906WS) (Opt. ILO Sofa 2618VS, 2715VS, 2604WS, 2607A, 2608WS, 2702WS, 2905WS, 2650WS, 2720WS)
- M Deluxe Tri-fold Sleeper Sofa with Comfortable, Easy Set-up Queen Bed.**(Std. 2618VS, 2715VS, 2819VS, 2604WS, 2607A, 2608WS, 2702WS, 2703WS, 2902WS, 2905WS, 2906WS, 2650WS, 2720WS) (Opt. 21SS/21SSL, 23IKSS)

ROCKWOOD

# Quality Construction

## JUST A FEW FEATURES THAT MAKE US GREAT.

Quality built trailers always bring the same results: long-lasting products you can depend on to enjoy with your family year after year. These are some of our highlights.



A



B



C



D



E



F



G

A Glued and screwed wood cabinetry

B Aluminum dinette frames for added strength and weight savings

C Vacuum-bonded floor with 16" on center aluminum floor joists (Std. Ultra Lite, select Roo models)

D Extra large dinette storage doors and full extension metal drawer guides in the kitchen

E Dexter Torflex Axles:  
· Independent wheel suspension and self-damping action  
· Rubber cushioning eliminates metal-to-metal contact.  
· Forged torsion arm for maximum strength

Models are also equipped with E-Z Lube® System and Nev-R-Adjust® Brakes.

F Enclosed underbelly protects trailer components as well as increasing aerodynamics (Ultra Lite models only)

G Aluminum Frame Construction with fiberglass exterior shown with Emerald Package and deluxe graphics



## ROOF CONSTRUCTION



Vacuum-bonded radius roof with vaulted ceiling providing superior insulation and more interior height.



4" thick roof with built in insulated A/C ducts



Built strong to enable you to conveniently perform periodic roof maintenance.

## WALL STRENGTH



Structurally engineered materials makes our vacuum-bonded walls some of the strongest in the industry.

## VACUUM-BONDED LAMINATED CONSTRUCTION



Rockwood is one of the few manufacturers that is a fully **6 sided vacuum-bonded trailer**. Our walls, floors, roof, fronts and backs are all aluminum framed and vacuum-bonded to ensure a well-insulated, light weight, strong structural trailer.

# Standards & Options

STANDARDS & OPTIONS ARE SUBJECT TO CHANGE.

MODELS	UV	UTT	UFW	R	ML
<b>INTERIOR FEATURES</b>					
Driftwood Interior	S	S	S	S	S
Maple (w/ Solid Maple Glaze Finished Cabinet Doors) Interior	0	0	0	0	0
Upgraded Decorative Slide Out Fascia	EP	EP	EP	--	--
Solid Wood and Raised Panel Doors and Drawers	S	S	S	S	S
Screwed and Glued Wood Cabinetry	S	S	S	S	S
Residential Full Extension Metal Drawer Guides	S	S	S	S	S
Flooring: Carpet and an Engineered Mold and Mildew Resistant Floor Covering (21SS, 21SSL, 23IKSS, 233S)					
Engineered Mold and Mildew Resistant Floor Covering	S	S	S	S*	S
Minimum Carpet	0	0	0	--	--
Ducted Furnace	--	--	--	S	S
Floor Ducted Furnace	S	S	S	--	--
13,500 BTU Ducted Air (N/A 1905, 1907, 1909S, 17, 183, 19)	SO	SO	SO	SO*	SO*
15,000 BTU A/C	0	0	0	0	0
2nd Roof A/C w/ Chill Chaser Heat Strip in Bedroom and 50 Amp Service (Opt. 2715VS, 2811VS, 2819VS, 2703WS, 2902WS, 2905WS, 2906WS, 2440WS, 2650WS, 2702WS)	0*	0*	0	--	--
13,500 Roof A/C (Std. 17, 183, 19) (Opt. 1905, 1907, 1909S)	--	--	--	SO*	SO*
Fireplace (2703WS, 2906WS, 2650WS Only)	--	0	0	--	--
Carbon Monoxide Detector	SO	SO	SO	SO	SO
12 Volt Power Plug Hook-up	S	S	S	S	S
CSA	0	0	0	0	0
Monitor Panel Switch Station	S	S	S	S	S
55 Amp Converter With Charger	S	S	S	S	S
Battery Disconnect Switch	S	S	S	S	S
Solar Panel Prep	S	S	S	S	S
Recessed Ceiling LED 12 Volt Interior Lighting	S	S	S	S	S
Bunk Fan/Light Combination with Each Bed	--	--	--	S	--
Mounted 24" LCD TV (Opt. 1905, 1907, 1909S)	SO	SO	SO	SO	SO*
Bedroom Mounted 24" LCD TV (Opt. All UL Models Except 2304DS, ML: 2505S Bunk Room, R: 23IKSS, 233S Only)	0*	0*	0*	0*	0*
32" LCD TV	S	S	S	--	--
5.1 Digital Dolby Surround Sound Speaker System (Required: 2703WS, 2906WS, 2440WS, 2650WS, 2720WS)	0	0	0	--	--
Digital AM/FM/CD/DVD w/ Remote	S	S	S	S	S
MP3 Player Hook-Up	S	S	S	S	S
Decorative Valances	--	--	--	S	S

MODELS	UV	UTT	UFW	R	ML
Designer Valances w/ Lambrequin Arms	S	S	S	--	--
Mini Blinds	S	S	S	--	--
Night Shades	--	--	--	0	0
Day/Night Shades	0	0	0	--	--
Swivel Rocker Chair (2604WS Only, Opt. 2811VS, 2440WS ILO Rear Sofa)	0*	S*	0*	--	--
Push Back Recliner Fabric Matched to Sofa (Std. 2715VS, 2720WS)	S*	--	S*	--	--
Swivel Rocker Recliners ILO Push Back Chairs (Opt. 2715VS, 2720WS Only)	0*	--	0*	--	--
Swivel Rocker Recliners ILO Chaise Lounge (Opt. 2902WS Only)	--	0*	--	--	--
Theater Seating ( Std. 2906WS, Opt. 2618VS, 2715VS, 2604WS, 2607A, 2608WS, 2702WS, 2905WS, 2650WS, 2720WS)	0*	S*/0*	0*	--	--
Theater Seating ILO Chaise Lounge (Opt. 2902WS Only)	--	0*	--	--	--
Deluxe Tri-Fold Sleeper Sofa (Std. 2618VS, 2715VS, 2819VS, 2604WS, 2607A, 2608WS, 2702WS, 2703WS, 2902WS, 2905WS, 2906WS, 2650WS, 2720WS) (Opt. 21SS/21SSL, 23IKSS)	S*	S*	S*	0*	--
Aluminum Bed and Dinette Frames	S	S	S	S	S
44" Family Dinette (Opt. 2505S) (N/A 2104S, 2504S, 2304DS, 2702SS, 2703WS, 2819VS, 2905WS, 21DK, 233S)	S*	S*	S*	S*	0*/S*
48" X 84" Spacious King-U-Style Dinette (Std. 2104S, 2504S, 2506S, 2304DS, 2702SS, 2703WS, 2819VS, 2905WS, 21BD, 21DK, 233S)	S*	S*	S*	S*	S*
Free Standing High Pressure Laminated Table with Swing Level Legs (Swing Level Legs N/A 1905, 1907, 1909S, 2109S, 2304, 2304KS, 2306, 2502KS, 2505S, 2506S)	S	S	S	S	S*
Free Standing Table and Chairs (N/A 2615VS, 2702SS, 17, 183, 19, 21DK, 23WS, All Mini Lite Models)	0*	0*	0*	0*	--
Stainless Steel Appliances	0	0	0	0	0
Raised Refrigerator Panels	0	0	0	0	0
Single Door Auto Gas/Elec. Refrigerator (1905, 1907, 1909S, 17, 183, 19 Only)	--	--	--	S*	S*
Double Door Auto Gas/Elec. Large Refrigerator (N/A 1905, 1907, 1909S)	S	S	S	S	S*
3 Burner High Output Gas Range w/ Glass Stove Top Cover	S	S	S	S	S
Gas Oven (Required 21DK, 23IKSS, 2304KS, 2502KS, 2503S, 2505S)(Included w/ OPG: 1905, 1907, 1909S Only)	SO	SO	SO	0*	0*
Microwave Oven	SO	SO	SO	SO	SO
Solid Surface Corian Counter Tops in Kitchen	EP	EP	EP	--	--

MODELS	UV	UTT	UFW	R	ML
Under Mount Double Bowl Stonecast Kitchen Sink w/ Residential Style Faucet (N/A 1905, 1907)	S	S	S	S	S*
Residential One-Piece Sink Cover	S	S	S	S	S
Cutting Board	S	S	S	S	S
Kitchen Cabinet Mounted Fold Down Shelf (2304,2306 Only)	--	--	--	--	S*
Counter Top Extension (Available 2715VS, 2819VS, 2604WS, 2702SS, 2702WS, 2703WS, 2905WS, 2440WS, 2720WS, 2504S)(Std. 2906W)	0*	S*/0*	0*	--	0*
Water-Pur Filtration System	SO	SO	SO	SO	SO
Tub Surround	S	S	S	S	S
Radius Glass Door Shower	S*	S*	S*	S*	S*
Bathroom Skylight	S	S	S	S	S
110 DSI Gas/Electric Six Gallon "Quick Recovery" Water Heater w/ Interior Gas and Electric Switches	SO	SO	SO	SO	SO
Water Heater By-Pass Kit	S	S	S	S	S
Foot Flush Toilets	S	S	S	S	S
Maxxair® Ventilation Fan and Vent Cover	SO	SO	SO	SO	SO
Extra Maxxair® Ventilation Fan and Vent Cover	0	0	0	S	0
Murphy Bed w/ Under Sofa Storage System and Outside Access for Unmatched Floor Plan Flexibility (Std. 2304DS, 2304KS, 2503S, 2504S, 2505S, 1905)(Opt. 2104S, 2304, 2306.)	S*	S*	S*	--	0*/S*
Murphy Bed w/ 39" Dinette for Unmatched Floor Plan Flexibility (Opt. 2505S)	--	--	--	--	0*
Heated Mattress	0	0	0	SO	SO
Serta Upgrade Mattress All Walk Around Beds	S	S	S	--	--
<b>EXTERIOR FEATURES</b>					
Fully Laminated Aluminum Frame (Floor, Sidewall, & Roof)	S	S	S	S	S
Insulation Factors R-7 Side Wall, R-12 Floor and R-14 Ceiling	S	S	S	S	S
Radius Roofs w/ Interior Vaulted Ceilings	S	S	S	S	S
Vinyl / Rubber Composite Roofing Membrane	S	S	S	S	S
T V Antenna w/ Cable & Satellite Hook-Up	S	S	S	S	S*
Rear Observation Camera Prep w/ Molded Mounting Plate	S	S	S	S	S
Laminated Oyster Colored Fiberglass Sidewalls	EP/SP	EP/SP	EP/SP	SP	SP
Laminated Fiberglass Sidewalls	S	S	S	S	S
Distinctive Black Exterior Trim	S	S	S	S	S
Electric Slide-Out (All Slide Out Models)	S	S	S	S	S
Lower Front Diamond Plate Panel	--	--	--	--	S

MODELS	UV	UTT	UFW	R	ML
Decorative Frame Skirting (1909S, 2104S, 2504S, 2506S Only) (N/A 17)	S	S	S	S*	S*
Easy to Reach Lockable Bed Latch System	--	--	--	S	--
Bed Cable System (No Poles)	--	--	--	S	--
Rear Ladder	O	O	O	--	O
Bike Rack Ladder Attachment	O	O	O	O	O
Power Awning With Adjustable Rain Dump and LED Lighting	SO	SO	SO	O	O
Awning (Opt: 1905, 1907, 1909S)	--	--	--	SO	SO*
Awning Slide Topper	O	O	O	O	O
Entrance/Screen Door	--	--	--	S	S
30" Primary Entrance/Screen Door	S	S	S	--	--
Large Assist Grab Handles	SO	SO	SO	S	S
Lighted Entry Step and Scare Light	EP	EP	EP	--	--
Radius Corner Windows and Doors	S	S	S	S	S
Windows w/ Tinted Safety Glass	SO	SO	SO	SO	SO
Tinted Bonded Frameless Windows	EP/SP	EP/SP	EP/SP	SP	SP
Thermopane Windows	O	O	O	O	O
Large Dinette Picture Window (N/A 1905, 1907, 2505S)	S	S	S	S	S*
Outside Grill Prep	S	S	S	S	S
Outside Gas Grill and Worktable (Opt: 1905, 1907, 1909S)	SO	SO	SO	O	SO*
Outside Speakers	SO	SO	SO	SO	SO
Outside Shower	S	S	S	S	S
1/2 Sliding Storage Tray (N/A 1905, 1907, 2304 and All Models w/ Murphy Bed) (Opt: 2304DS, 17, 183, 19, 21SS, 21SSL, 23IKSS)	O*	O*	--	O*	O*
Outside Antifreeze Stations	S	S	S	S	S
Front Outside "Trunk" Storage Separated From Heated Pass Thru Storage Compartments	--	--	S	--	--
Slam Latches on Both Side Pass Thru Storage Doors & Front Compartment Door	--	--	EP	--	--
Slam Latches on Storage Doors	EP	EP	--	--	--
Two-20 Lb Gas Bottles (1905, 1907, 1909S Only)	--	--	--	S	S*
Two-30 Lb Gas Bottles	S	S	S	--	S*
Enclosed Gas Bottles w/ Storage Door Access	S	--	S	--	--
Molded Bottle Cover	--	S	--	S	S
Surface Coated Steel I-Beam Frame (N/A 1905, 1907, 1909S)	S	S	S	S	S*
Reese Revolution Hitch	--	--	S	--	--
8' X 8' Front Storage Deck: 1300 LBS. Max Capacity (21SSL Only)	--	--	--	S*	--
2' X 8' Front Storage Deck W/ Enclosed Storage Compartment: 350 LBS. Max Capacity (21BD Only)	--	--	--	S*	--
Fuel Station with 18 Gallon Capacity (Gasoline Only)					

MODELS	UV	UTT	UFW	R	ML
(Opt. 21SSL Only)	--	--	--	O	--
Toyllok Mounted Locking System (21BD, 21SSL Only)	--	--	--	S*	--
Power Front Landing Jacks	--	--	S	--	--
Power Tongue Jack	O	O	--	O	O
Stabilizer Jacks	S	S	S	S	S
Power Stabilizer Jacks (Fifth Wheels: Rear Jacks only)	O	O	O	--	--
Torsion Axle, Rubber-Ryde Suspension	S	S	S	S	S
Easy Lube Axles and Nev-R Adjust Brakes	S	S	S	S	S
15" Radial Trires w/ Nitro Fill	S	S	S	--	--
Radial Tires w/ Nitro Fill (1905, 1907, 1909S, 17 Roo w/ Single Axle)	--	--	--	S	S
Double or Triple Entry Step	S	S	S	S	S
Off Road Package (Includes: 15" Off Road Tires and Aluminum Wheels) (21SSL Only)	--	--	--	S*	--
Chrome-look Wheel Covers	O	O	O	O	O
Aluminum Wheels	O/EP/SPO/EP/SPO/EP/SPO/SP	O/EP/SPO/EP/SPO/EP/SPO/SP	O/EP/SPO/EP/SPO/EP/SPO/SP	O/SP	O/SP
Spare Tire Carrier & Cover	SO	SO	SO	O	SO
Electronically Controlled Heated Holding Tanks	O	O	O	O	O
Enclosed Holding Tanks	S	S	S	--	--
Black Water Flush	S	S	S	S	S
<b>EMERALD PACKAGE INCLUDES:</b>	O	O	O	--	--
Oyster Colored Fiberglass					
Deep Tinted Frameless Bonded Windows					
Slam Latches on Storage Doors					
Exterior Step and "Scare" Light					
Aluminum Wheels					
Solid Surface Corian Kitchen Counter top					
Upgraded Slide Fascia					
<b>SAPPHIRE PACKAGE INCLUDES:</b>	O	O	O	O	O
Oyster Colored Fiberglass					
Deep Tinted Frameless Bonded Windows					
Aluminum Wheels					
<b>CONVENIENCE PKG. B INCLUDES:</b>	SO	SO	SO	--	--
13,500 BTU Ducted Air					
Mounted 24" LCD TV w/ AM/FM Stereo, CD, DVD Player					
Gas Oven					
Microwave Oven					
110 DSI Gas/Electric Six Gallon "Quick Recovery"					

MODELS	UV	UTT	UFW	R	ML
Water Heater					
Power Awning w/ LED Lighting					
Large Assist Grab Handle					
Windows w/ Tinted Safety Glass					
Outside Grill and Worktable					
Spare Tire Carrier & Cover					
Outside Speakers					
<b>CONVENIENCE PACKAGE C INCLUDES:</b>	--	--	--	SO	--
13,500 BTU Roof A/C (17, 183, 19)					
13,500 BTU Ducted Air (21BD, 21DK, 21SS, 21SSL, 23IKSS, 23WS 233S)					
Mounted 24" LCD TV w/ TV Antenna & Cable Hook-up					
Microwave Oven					
110 DSI Gas/Electric Six Gallon "Quick Recovery"					
Water Heater					
Awning					
Windows w/ Tinted Safety Glass					
Outside Speakers					
<b>OPTION PKG. G INCLUDES: (1905, 1907, 1909S ONLY)</b>	--	--	--	--	SO*
Gas Oven					
Microwave Oven					
110 DSI Gas/Electric Six Gallon "Quick Recovery" Water Heater					
TV Antenna w/ Cable & Satellite Hook-up					
Spare Tire Carrier & Cover					
Outside Speakers					
<b>CONVENIENCE PKG. A INCLUDES: (N/A 1905, 1907, 1909S)</b>	--	--	--	--	SO*
13,500 BTU Ducted Air					
Mounted 24" LCD TV w/ AM/FM Stereo, CD, DVD Player					
Microwave Oven					
110 DSI Gas/Electric Six Gallon "Quick Recovery"					
Water Heater					
Awning					
Windows w/ Tinted Safety Glass					
Outside Grill and Worktable					
Outside Speakers					
Spare Tire Carrier & Cover					

UV = ULTRA V, UTT = ULTRA LITE TRAVEL TRAILER, UFW = ULTRA LITE FIFTH WHEEL, R = ROO, ML = MINI LITE

S = STANDARD, SO = STANDARD OPTION, O = OPTIONAL, -- NOT AVAILABLE, EP = EMERALD PACKAGE, SP = SAPPHIRE PACKAGE, \* = SELECTED MODELS



### PRE-DELIVERY INSPECTION FACILITY

20,000 square feet of quality assurance. The bare essentials for a premium product. This state-of-the-art facility gives immediate daily feedback to production for quality assurance in every unit built.



Forest River, Inc. encourages our customers to purchase their Forest River products from a local dealership whenever possible for the following reasons:

- 1) Forest River, Inc. dealers are independently owned and operated businesses so priority service and scheduling is at their discretion and is often provided to customers that purchased their unit at that dealership.
- 2) Purchasing locally allows customers to establish meaningful relationships with a dealer, enhancing the RV experience through assistance with product questions, user tips or RV regulations for your state or country, and much more!
- 3) Canadian customers must meet requirements to bring an RV purchased out of the country to their home. These requirements may involve additional inspections and certifications, taxes and fees. Your local Canadian Dealer is a professional at meeting these requirements.
- 4) Scheduling timely warranty repairs and adjustments through a local dealership provides far greater flexibility and convenience to you, the customer!

It is the goal of Forest River, Inc. that all of our RV owners fully enjoy the RV experience and that customer satisfaction meets or exceeds their expectations!

### 24/7 EMERGENCY ROADSIDE ASSISTANCE

For a worry-free ownership experience

Forest River includes one

year of Coach-Net RV Technical & Roadside Assistance with each RV purchase. Whether new to the RV lifestyle or an experienced RV enthusiast, Forest River owners have 24/7 access to technical, operational and emergency road service coverage throughout the US & Canada.

Coach-Net's fast, dependable service is just a phone call away.

**Coach-Net®**  
RV Technical & Roadside Assistance

LOOK FOR OUR  
OTHER POPULAR  
LINES OF ROCKWOOD  
CAMPING TRAILERS.

### Specification Definitions

**GVWR (Gross Vehicle Weight Rating)** - is the maximum permissible weight of the unit when fully loaded. It includes all weights, inclusive of all fluids, cargo, optional equipment and accessories. For safety and product performance do NOT exceed the GVWR.

**GAWR (Gross Axle Weight Rating)** - is the maximum permissible weight, including cargo, fluids, optional equipment and accessories that can be safely supported by a combination of all axles.

**UVW (Unloaded Vehicle Weight)\*\*** - is the typical weight of the unit as manufactured at the factory. It includes all weight at the unit's axle(s) and tongue or pin and LP Gas. The UVW does not include cargo, fresh potable water, additional optional equipment or dealer installed accessories.

\*Estimated average based on standard build optional equipment.

**CCC (Cargo Carrying Capacity)\*\*** - is the amount of weight available for fresh potable water, cargo, additional optional equipment and accessories. CCC is equal to GVWR minus UVW. Available CCC should accommodate fresh potable water (8.3 lbs per gallon). Before filling the fresh water tank, empty the black and gray tanks to provide for more cargo capacity.

\*\*Estimated average based on standard build optional equipment

Each Forest River RV is weighed at the manufacturing facility prior to shipping. A label identifying the unloaded vehicle weight of the actual unit and the cargo carrying capacity is applied to every Forest River RV prior to leaving our facilities.

The load capacity of your unit is designated by weight, not by volume, so you cannot necessarily use all available space when loading your unit.



Freedom, ESP, Premier, High Wall & Hard Side Camping Trailers.



Windjammer, Signature Ultra Lite TT & FW

ROCKWOOD

# Warranty WE STAND BEHIND OUR PRODUCTS.

For details on Rockwood's complete warranty program, see your Rockwood dealer. When it comes to backing products with the same quality and commitment it does when it begins the manufacturing process, the only name you have to remember when you're looking for a recreational vehicle is Rockwood. Rockwood offers the following additional limited warranties to the original purchasers. Consult written warranty for details.

1. Twelve-year vinyl roof warranty, 2. Two-year fiberglass warranty, 3. Five-year axle warranty, 4. Five-year tent warranty, 5. One-year bumper to bumper warranty, 6. Available second-year warranty



#### Learn More

Scan this barcode using a QR Reader on your smart phone to learn more about Forest River.



A Berkshire Hathaway company.



201 WEST ELM MILLERSBURG, IN 46543 WWW.FORESTRIVERINC.COM/ROCKWOOD 574.642.2640

YOUR ROCKWOOD DEALER



All information contained in this brochure is believed to be accurate at the time of publication. However, during the model year, it may be necessary to make revisions and Forest River, Inc., reserves the right to make all such changes without notice, including prices, colors, materials, equipment and specifications as well as the addition of new models and the discontinuance of models shown in this brochure. Therefore, please consult with your Forest River, Inc., dealer and confirm the existence of any materials, design or specifications that are material to your purchase decision. Litho. U.S.A P/W: 2015.12.09