



FULLHOUSE

2021

LUXURY ASSET HAULER



FULL HOUSE

Full House is built on the foundation of a Mobile Suite, it is built to be used, traveled with, and lived in! So gather your assets, start your adventure, and enjoy true luxurious full-time living with your new Full House.

Hazelnut with Moonstone Décor
and Slate Sofas



Full-time living requires several items most toy haulers tend to ignore, but we put an emphasis on ensuring each floor plan offers a spacious kitchen with residential appliances, and functional storage.

JX450





JX450

The JX450 boast a full residential kitchen with tons of storage, solid surface countertops, full dinette, theater seating, and 55" TV entertainment center.



6 . Full House



JX450

All Full House models feature a standard vanity slide providing more room in front of the bed. Each master suite offers excellent storage capabilities that include a walk-in closet with cedar lining and full underbed storage. Our master bathroom provides a full fiberglass shower, custom medicine cabinets, and built-in indirect lighting.



PAINT & DECOR OPTIONS



Grey Stone

Partial Body Paint
(Standard)



Twilight Mist

Partial Body Paint
(Standard)



SOFA PILLOWS/DINETTE CHAIRS



VALANCES

Affinity

Moonstone

Providence

CABINETS

COUNTERS



Hazelnut



Latte



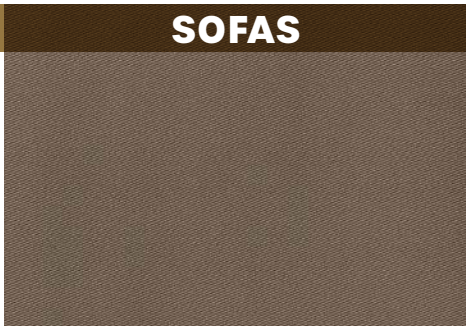
Mocha Cherry



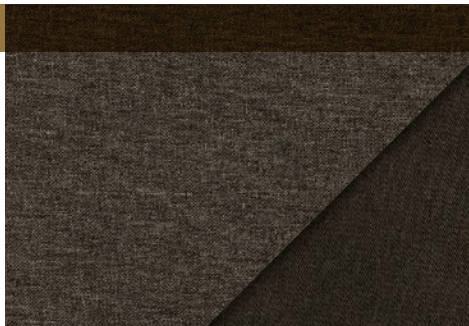
Solid Surface



Cashmere



Pebble



Slate

SOFAS



Aged Asphalt



Portabello

FLOORING



Shaw® Carpet

GARAGE FEATURES



The Full House takes the typical toy hauler garage to the next level. Every model comes standard with custom metal cabinetry, a 49" TV, and diamond plate accents throughout.

The optional patio enclosure is a popular choice. You can also add electric drop down beds, jack knife sofas, and a three season patio enclosure.



STANDARDS

Frame/Running Gear:

• Goodyear® 17 1/2" H-Rated Re-Groovable Tires

- Heavy Duty Grease Bolt Shackles w/Bronze Bushing

• Automotive Style Disc Brakes

• Heavy Duty 8,000 Lb. Rated Axles (Most Models)

- Commercial Grade EZ Lube Hubs

• 15" Triple Stacked Box Tube Frame

- 101" Wide Body
- Industrial Hydraulic System for Jacks & Lower Level Slides
- Electric Bedroom Slide
- Slide Outs w/Select Push Button Controls
- Pinless, Industrial Hydraulic Front Landing Jacks at 5° Outboard Angle

Construction: Floor

- 3" Thick Floor
- 14" O.C. Floor Aluminum Floor Joists
- Screwed & Glued Joist Construction
- 5/8" Tongue & Groove Plywood Flooring
- Four Season Perimeter Heat Ducting in Floor
- Residential Rated R29 Formaldehyde Free Wool Insulation

Construction: Walls/Slides

• 3 1/4" Thick Walls/Slides

- 16" O.C. Stud Spacing

- Screwed & Glued Aluminum Stud Construction

• 1/4" Monsanto® Fome-Cor Vapor Barrier (Eliminates Condensation)

- 1/4" Thick High Gloss Gelcoat Fiberglass
- Azdel OnBoard Composite Panels
- Residential Rated R16 Formaldehyde Free Wool Insulation

Construction: Roof

- 16" O.C. Rafter Spacing
- Residential Rated R25 Formaldehyde Free Wool Insulation
- 1/2" Plywood Roof Overlayment
- Seamless, 1-Piece Rubber Roof

• Soft-Touch Vinyl Ceiling, Including Interior Slide-Out Ceilings

Exterior:

- Straight Roof Line w/8' Tall Interior Slide Out Height
- Subzero Thermo-Pack High Density Wool Insulation
- High Gloss Gelcoat Fiberglass
- High Gloss Gelcoat Fiberglass Molded Caps
- Custom Painted Exterior w/Clear Coat
- Frameless Tinted Safety Glass Windows
- LED Back-Up Lights
- Commercial LED Exterior Clearance Lights
- Mid-Ship Turn Signal
- LED Docking Lights
- Dual 78" Entry Door
- Removable Storm Door Panels
- Metal Slam Door Compartment Latches
- Extra Thick Compartment Doors w/Gas Struts
- Easy Access Light Switches for Basement
- Custom Enlarged Control Center w/LED Lighting
- Lend-a-Hand Exterior Grab Handle
- Power Awning w/Aluminum Weather Shield (Over Both Entry Doors)
- Water Pump Switch at Outside Hookup Center

- Lend-a-Hand Exterior Grab Handle
- Power Awning w/Aluminum Weather Shield (Over Both Entry Doors)
- Water Pump Switch at Outside Hookup Center

Systems/Tanks:

- 50 Amp Service w/Detachable Cord
- 80 Amp 12 VDC Converter
- 100 Gal. Fresh Water Tank
- 75 Gal. Grey Water Tank w/Power Flush
- 50 Gal. Black Water Tank w/Power Flush

• SeeLevel Tank Monitoring System on All Tanks

- Residential Type 1/2" Water Lines

• Exclusive Copper Water Manifold w/Individual Shut-Off Valves

- Whole House Water Filtration System
- Multi-Switch Water Bypass System
- Slide Out Propane Tray w/Dual 40 Lb. Tanks
- 12VDC Battery on Pull Out Tray
- 12 Gal. Gas/Electric DSI Water Heater
- 40,000 BTU Furnace w/Custom Plenum

• Residential 5 Duct Heating System w/6" Ducting

• Forced Heat Ducting to Tanks/Water System

• Fully Ducted A/C System w/Cold Air Return

- Triple 15,000 BTU Low-Profile A/Cs
- Solar Prep
- HD Roof Satellite Prep for Dual DVR Receivers
- HD Ground Satellite & Cable Prep
- HD TV Antenna

Interior: Luxury Living Room/Dinette

• Hand Laid Vinyl Floor Tile

- Residential Rebond Carpet Pad
- Plush Residential High Durability Carpet
- Hazelnut/Latte/Mocha Cherry Solid Hardwood Cabinetry
- Solid Hardwood Fascia Trim Around Slide Outs
- Solid Hardwood Cabinet Stiles (Pocket Drilled/Screwed)
- Concealed Cabinet Door Hinges
- Raised Panel Cabinetry

- Solid Hardwood Cabinet Stiles (Pocket Drilled/Screwed)
- Concealed Cabinet Door Hinges
- Raised Panel Cabinetry

• Soft-Close Full Extension Metal Drawer Guides

• LED Interior Ceiling Lighting on Dimmer Switches

- Utility Closet w/Coat Storage & Centralized Control Station
- Interior Ceiling Fan
- Custom Hardwood Dinette Buffet w/Solid Surface Top (Some Models)
- Dinette Table w/Hidden Leaf Extension (Some Models)

- (2) Hardwood Dinette Chairs w/Fabric Accent (Some Models)

- Crown Molding Throughout

- HD Wiring Throughout

Interior:

Gourmet Kitchen

• 20 Cu. Ft. Residential Stainless Steel French Door Refrigerator

• Pull-Out 13 Gal. Garbage Can

• Stainless Steel Convection/Microwave

- Deep Double Bowl Stainless Steel Sink w/Sink Covers
- Residential Kitchen Faucet w/Sprayer
- High Polished Solid Surface Countertops
- Sealed 3 Burner Cooktop w/Hinged Countertop Lift
- Custom Appliance Garage w/Pull-Out Tray (Most Models)
- Lighted Pantries & Kitchen/Bathroom Toe Kicks

Interior: Master Bath/Hallway

- Hardwood Steps
- Hand Laid Vinyl Tile in Hallway/Bathroom
- No Carpet in Hallway
- Washer/Dryer Prep
- Heat & A/C Ducting in Bathroom
- Maxxair® Fan in Bathroom

- 1-Piece Fiberglass Shower w/Molded Seat

- Sky-Light Over Shower w/LED Pot Light

- Porcelain Toilet w/Water Saver Spray

- Macerator Toilet (Some Models)

Interior: Master Bedroom

• Custom Walk-in Front Closet w/Built in Dresser (Most Models)

• Real Cedar Lined Front Closet

• Custom Hardwood Wardrobe Doors

- King Bed Suite 72" x 80" w/Innerspring Mattress
- Full Storage Under Bed Base
- Separate Bedroom Soundbar

- Over the Bed Reading Lights on Separate Switches
- Vanity Slide

Garage:

- Industrial Metal Overhead Cabinetry

- LED Lighting

- 49" LED HD TV

- Touch Screen/Blue Tooth Garage Audio/Ent. System

- Dual 30 Gal. Fuel Tanks w/Fuel Pump & Fill Station

Full House Package (Forced Option):

- 55" LED TV & Home Theatre Package

- 32" LED Bedroom TV Package

- 49" LED TV Garage

- Garage Ent. System w/Touch Screen

- Goodyear® 17 1/2" H-Rated Spare Tire

- Side Mounted Fold-Out Ladder

- Frameless Thermopane Windows

- Dual Door 4-Step Entry

Executive Package (Forced Option):

- MCD Day/Night Roller Shades

- Built-In Fireplace

- Magnum 1000W Inverter w/Dual 6V Batteries

- Maxxair® Fan w/Rain Sensor - Bathroom

- Maxxair® Fan w/Rain Sensor - Kitchen

- Power Mgmt. System

- Six Point Hydraulic Leveling System

- One Touch Auto Leveling

- Keyless Entry Door (Both Doors)

- Onan 5.5 Gasoline Generator w/Auto Gen. Start

OPTIONS

Cabinets (Standards):

- Hazelnut

- Latte

- Mocha Cherry

Décor (Standards):

- Affinity

- Moonstone

- Providence

Flooring (Standards):

- Aged Asphalt

- Portabella

- High Ounce Carpet

Countertop (Standard):

- Solid Surface

Interior:

- Power Recliner Theatre Seating/Recliners

- Hazelnut Folding Chair

- Mocha Cherry Folding Chair

Entertainment:

- 32" LED HDTV Outdoor Ent. (Some Models)

- Winegard® Trav'ler HD Auto Satellite

- WiFi Ranger Wireless Router

Kitchen:

- 3 Burner Range/Oven IPO 3 Burner Cooktop

Bedroom:

- Built in Front Wardrobe Safe w/Keyless Entry
- Queen Bed Suite

Garage:

- Electric Drop Down Sofa/Bed

- Electric Drop Down Bed

- Fold-Up Outdoor Patio

- 3 Season Patio Door

- Removable Table

Systems/Vents/Fans:

- Heat Pump

- Maxxair® w/Switch Control - Garage

- Splendide® Front Load 2 piece

- Splendide® XC 2,100 Combo

Construction/Running Gear:

- Power Cord Reel (Some Models)

- HBA Brake Cam (To be Ordered Special for Customers w/GM Trucks)

Exterior/Awnings:

- Slide Toppers

- Power Dinette Slide Awning w/Weathershield

- Slide Out Storage Tray (36" x 90")

- Audible Wireless Backup Camera System

- CSA

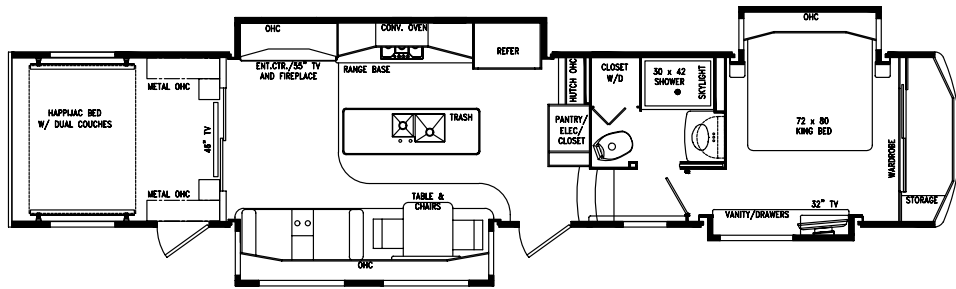
Partial Body Paint (Standards):

- Grey Stone

- Twilight Mist

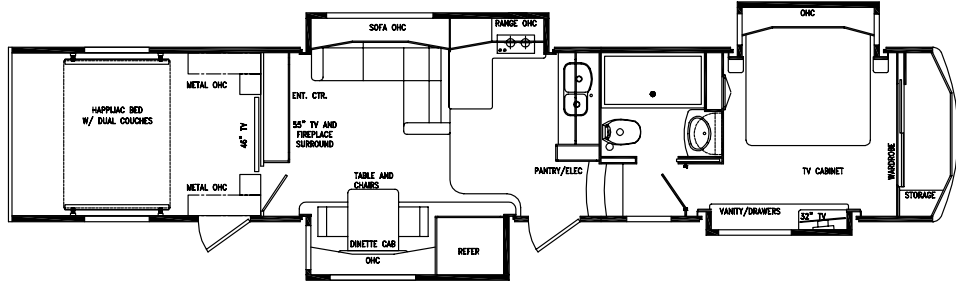
JX450

Garage - 10'
Length - 44' 2"
UVW - 20,310
GVWR - 24,000



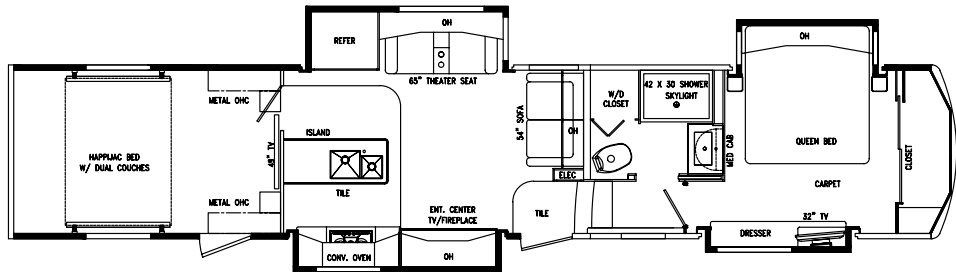
LX450

Garage - 12'
Length - 44' 2"
UVW - 19,600
GVWR - 24,000



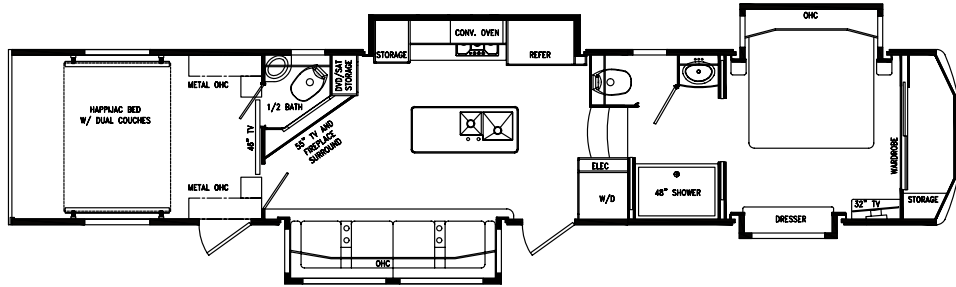
MX450

Garage - 13'
Length - 44' 5"
UVW - 19,660
GVWR - 24,000



LX455

Garage - 12'
Length - 44' 2"
UVW - 19,800
GVWR - 24,000



ALL MODELS FEATURE:

- Fresh Tank - 100 gal.
- Hot Water Heater - 12 gal.
- 8,000 lb. Rated Axles (triple axle models)
- Gray Tank - 75 gal.
- Automotive Disc Brakes
- Heavy Duty 9,000 lb. Axles (tandem axle models)
- Black Tank - 50 gal.
- Goodyear 17 1/2" H-Rated Tires

Note: All lengths are measured from the pin box to the rear cap. All dry weights are estimates depending on options.

DRV

0160 W 750 N • PO Box 235 • Howe, IN 46746

Factory tours by appointment,
please call for specifics 260-562-1075

www.drvsuites.com

facebook

twitter

www.suitesowners.com

Be sure to join our outstanding
DRV owner's club!



This brochure is based upon the latest product information available at the time of printing. DRV reserves the right to make changes at any time to prices, colors, materials, equipment, specifications and models, and to discontinue models without notice or obligation. Color representations are as close as photographic/print reproduction will allow. All specifications are approximate and dimensions nominal. Text and/or photos may represent equipment or décor items which may not be included as a standard item in your model of choice. © 2020 DRV 6/1/20