

Passport

GT SERIES TRAVEL TRAILERS
SL SERIES TRAVEL TRAILERS

GO

EVERYWHERE



FALL PREVIEW



The ultimate ownership experience.

The goal of Keystone RV Company is to surprise and delight our owners at each and every touchpoint. We're happy when our campers are happy, and we are committed to providing the very best ownership experience in the industry.



Keystone RV Company

1 EASIER SHOPPING.

At Keystone, we make choosing an RV as easy as finding the Big Dipper on a dark summer night. With comprehensive online product information, Key Connect™ product advisors, and an unparalleled dealer network, we will help you select the perfect RV for your family's adventure.

2 INNOVATIVE THINKING.

The road's a nicer place when you have the industry's smartest features behind you. Keystone leads the pack in patented innovations that make our RVs safer, more comfortable, and easier to operate.

3 LONG HAUL QUALITY.

To keep you on the road, there are certain things we just won't build a Keystone RV without. Game-changing features like our Unified Wiring Standard, Tru-Fit™ five-point slide construction, and no-fail Tuf-Lok™ A/C duct joiners combined with exhaustive testing and inspections are some of the reasons why Keystone is able to offer our owners the industry's best 3-year limited structural warranty.

4 WORRY-FREE CUSTOMER SERVICE.

Wherever the road takes you, you're never too far from an authorized Keystone service center. We also offer live service assistance, ultra-fast parts shipping, online maintenance tips and tricks, and a single-point warranty claims policy. *That's* peace of mind.

5 KEYSTONE NATION.

When you choose Keystone, you become one of the largest camping families in the country. We're Keystone Nation. A friendly community where people share photos, travel tips and amazing stories – all in the spirit of camaraderie and adventure. Come join us.

Experience the Passport lifestyle by visiting [#keystonePassport](#)



PASSPORT



SL SERIES TRAVEL TRAILERS | GT SERIES TRAVEL TRAILERS

Less AND More: The All-New Passport®

Redefining expectations for ultra-lightweight travel trailers, the redesigned Passport GT and SL Series offers less weight and more of everything—more style, more comfort, more technology, and more ways to maximize your camping adventures.

For more information, please visit keystone.com/Passport



more product detail at
www.keystonerv.com/Passport

Passport GT Series

ULTRA-LITE TRAVEL TRAILERS

- Automotive painted fiberglass front cap
- MORryde® Step Above™ entry steps
- Exceptional 45 cu. ft. pass-through storage with magnetic door hold
- Exterior television hookup
- Exterior hot and cold shower
- Load equalization axles (stability and weight equalization)
- Service light near termination valves
- EXCLUSIVE KeyTV™ multisource controller for satellite, cable, and over-the-air feeds
- 4G LTE and WiFi prep
- Solar prep
- Backup camera prep
- Black tank flush
- Heated and enclosed underbelly and valves
- Vaulted ceiling
- 60" x 80" queen bed
- USB ports (10)
- Seamless, one-piece upgraded countertops
- Furrion® glass-top range with gas oven
- Deep-seated stainless steel sink with cover and residential pull-down faucet
- High performance in-floor heat duct system
- Motion activated lighting at main entrance and pass-through storage
- Power tongue jack
- 8 cu. ft. refrigerator



MORryde® Step Above™
Total control over HVAC, awnings, lights and monitoring system from your smartphone



Furrion® Kitchen Appliances
Modern aesthetics and precise performance



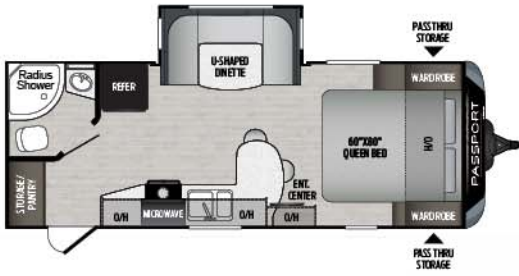
EXCLUSIVE KeyTV™
Game-changing single-point control of over-the-air, cable and satellite feeds



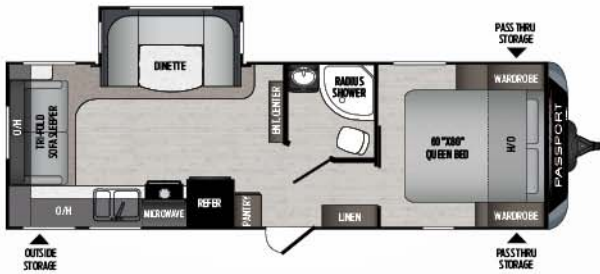
Automotive-grade painted caps
KeyGuard chip and rock protection

Passport GT Series

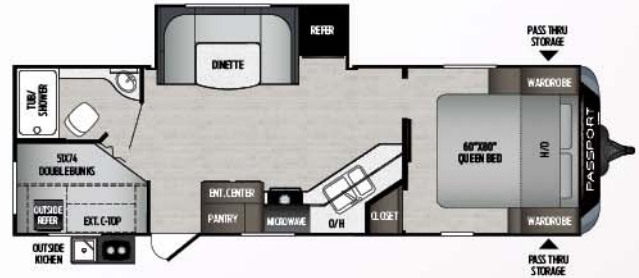
FLOOR PLANS



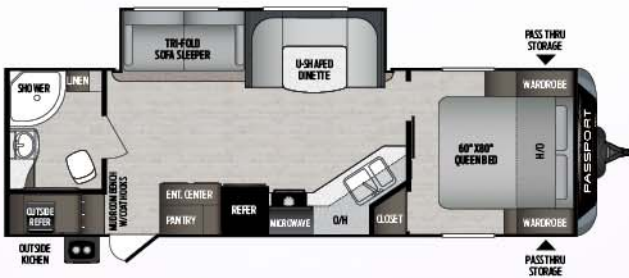
2210RB | Super slide w/ oversized bathroom
Weight: 4790 LBS. | Length: 25' 11"



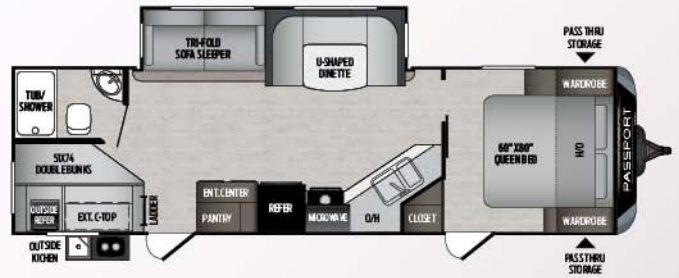
2521RL | Single slide, ultimate couples coach
Weight: 3865 LBS. | Length: 23' 11"



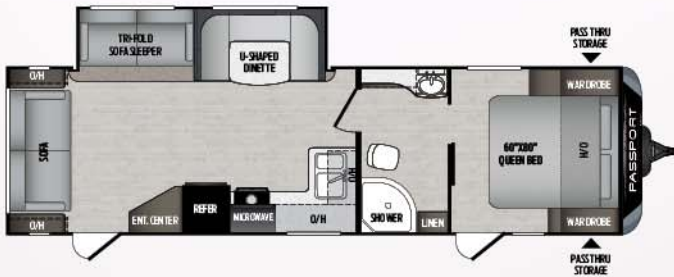
2600BH | DBL/DBL bunk w/outside Kitchen
Weight: 3865 LBS. | Length: 23' 11"



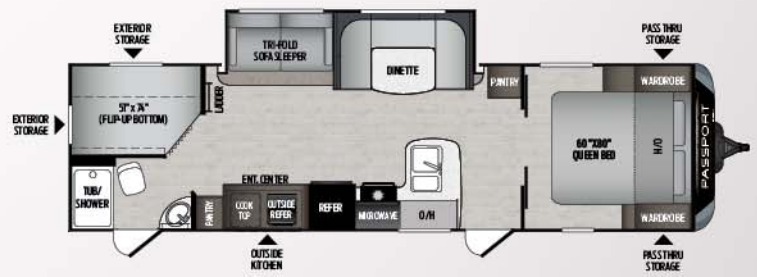
2710RB | Mud room bench w/coat hooks
Weight: TBD | Length: 31' 6"



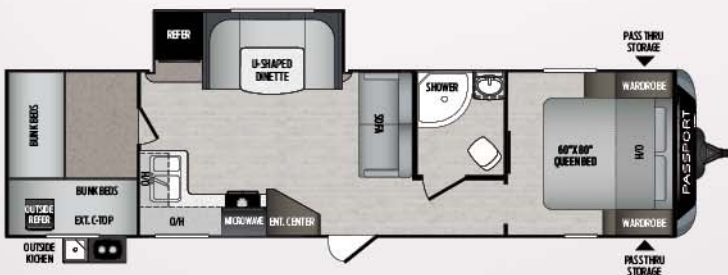
2820BH | Multi-purpose bunkhouse w/ outdoor kitchen
Weight: TBD | Length: 31' 6"



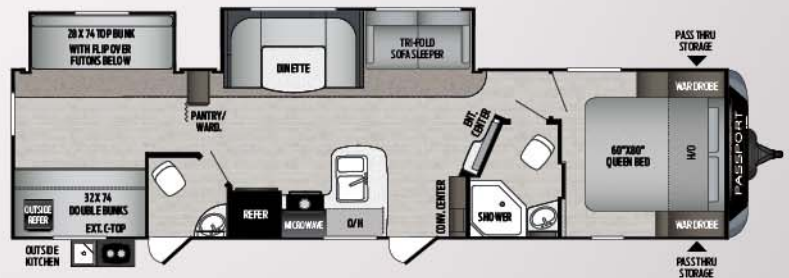
2900RL | Super slide /rear Living
Weight: 4140 LBS. | Length: 25' 5"



2950BH | Multi-purpose bunkhouse w/ outdoor kitchen
Weight: 6105 LBS. | Length: 33' 9"



3100QB | Quad bunk w/ outdoor kitchen
Weight: 4140 LBS. | Length: 25' 5"



3351RL | Bath-N-Half bunkhouse
Weight: 4140 LBS. | Length: 25' 5"



more product detail at
www.keystonerv.com/Passport

Passport SL Series

ULTRA-LITE TRAVEL TRAILERS

- Exceptional 45 cu. ft. pass-through storage with magnetic door holds
- Exterior television mount
- Exterior hot and cold shower
- Service light near termination valves
- EXCLUSIVE KeyTV™ multisource controller for satellite, cable, and over-the-air feeds
- 4G LTE and Wi-Fi prep
- Solar prep
- Blank tank flush
- 60" x 80" queen bed
- USB ports (10)
- Furrion® glass-top range with gas oven
- Seamless, one-piece countertops
- Deep-seated stainless steel sink with cover
- Residential pull-down faucet
- Motion activated lighting at main entrance and pass-through storage
- 6 cu. ft. refrigerator
- High performance in-floor heat duct system
- Heated and enclosed underbelly and valves



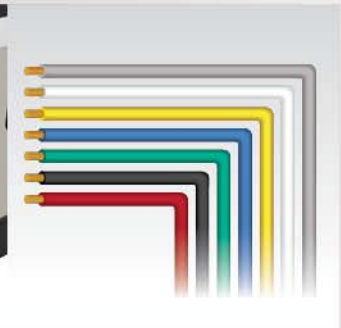
EXCLUSIVE KeyTV™
Game-changing single-point control of over-the-air, cable and satellite feeds



Furrion® Kitchen Appliances
Modern aesthetics and precise performance



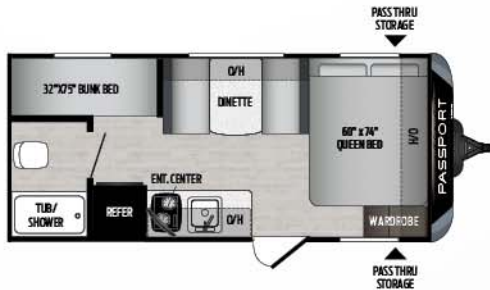
EXCLUSIVE Tru-fit™ slide construction
A more durable slide room design that minimizes functional motor and structural stress, resists leaking



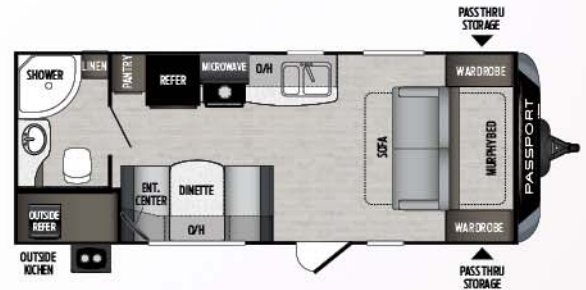
EXCLUSIVE color-coded Unified Wiring Standard
Easy-to-trace circuits simplifies and expedites electrical and entertainment system troubleshooting

Passport SL Series

ULTRA-LIGHTWEIGHT TRAVEL TRAILER FLOOR PLANS



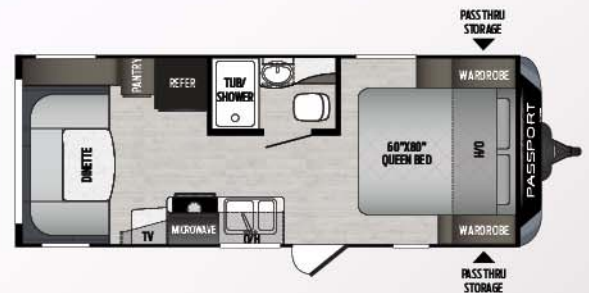
175BH | Single-axle bunkhouse w/ queen bed
Weight: 3325 LBS. | Length: 21' 3"



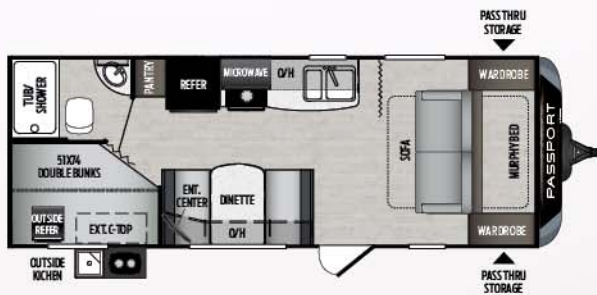
197RB | Double-axle couple's coach
Weight: 3865 LBS. | Length: 23' 11"



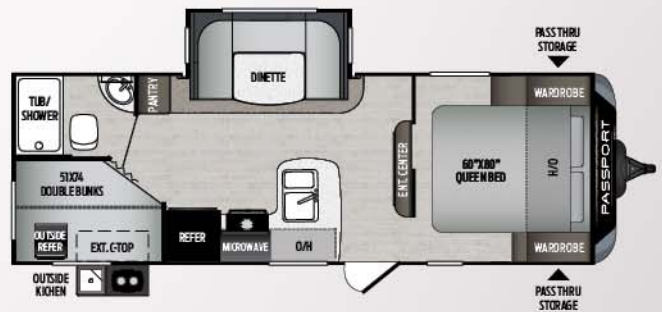
199ML | Single-slide couple's coach
Weight: 3904 LBS. | Length: 22' 9"



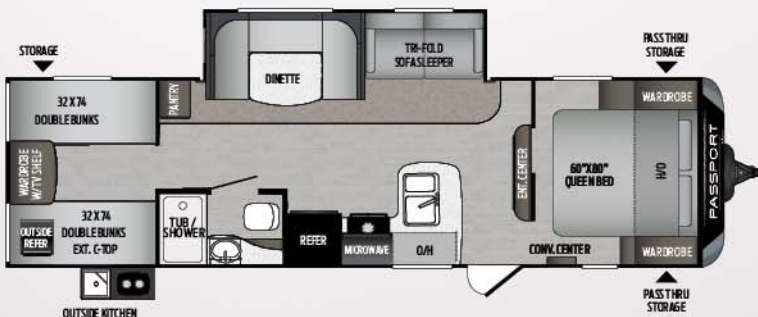
216RD | Couple's coach w/ oversized dinette
Weight: TBD | Length: 22' 9"



239ML | Murphy bed, bunkhouse
Weight: 4140 LBS. | Length: 25' 5"



240BH | Super slide, bunkhouse w/ 60" x 80" queen bed
Weight: 4960 LBS. | Length: 27' 4"



292BH | Quad bunkhouse w/ pack-n-play door
Weight: 5760 LBS. | Length: 32' 4"



more product detail at
www.keystonerv.com/Passport

Passport Western | ULTRA-LITE TRAVEL TRAILERS

- Automotive Fiberglass front cap
- MORryde® Step Above™ entry steps
- Exceptional 45 cu. ft. pass-through storage with magnetic door hold
- Exterior television mount
- Exterior hot and cold shower
- Load equalization axles (stability and weight equalization)
- Service light near termination valves
- EXCLUSIVE KeyTV™ multisource controller for satellite, cable, and over-the-air feeds
- 4G LTE and WiFi prep
- Solar prep
- Backup camera prep
- Black tank flush
- Heated and enclosed underbelly and valves
- Vaulted ceiling
- 60" x 80" queen bed
- USB ports (10)
- Seamless, one-piece upgraded countertops
- Furrion® glass-top range with gas oven
- Deep-seated stainless steel sink with cover and residential pull-down faucet
- High performance in-floor heat duct system
- Motion activated lighting at main entrance and pass-through storage
- Power tongue jack
- 8 cu. ft. refrigerator

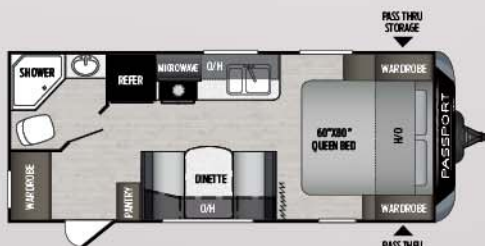


MORryde® Step Above™
 Total control over HVAC, awnings, lights and monitoring system from your smartphone

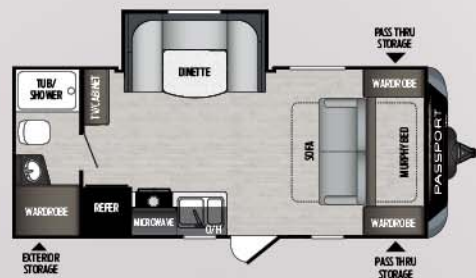
Furrion® Kitchen Appliances
 Modern aesthetics and precise performance

EXCLUSIVE KeyTV™
 Game-changing single-point control of over-the-air, cable and satellite feeds

EXCLUSIVE color-coded Unified Wiring Standard
 Easy-to-trace circuits simplifies and expedites electrical and entertainment system troubleshooting



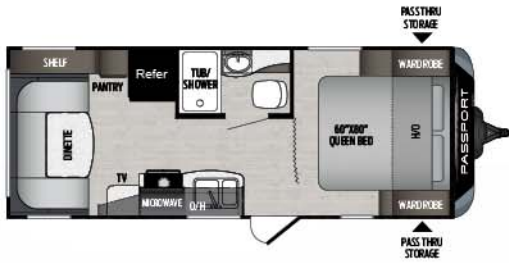
197RBWE | Single-axle bunkhouse w/ queen bed
 SL SERIES | Weight: 3325 LBS. | Length: 21' 3"



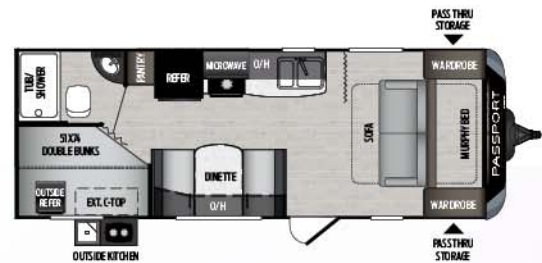
199MLWE | Double-axle couple's coach
 SL SERIES | Weight: 3865 LBS. | Length: 23' 11"

Passport Western

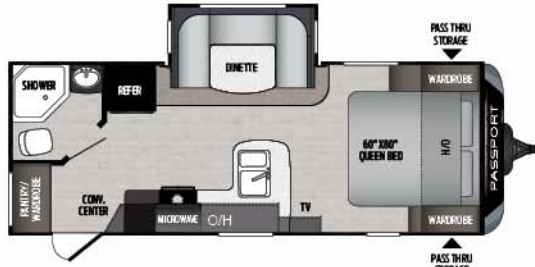
ULTRA-LIGHTWEIGHT TRAVEL TRAILER FLOOR PLANS



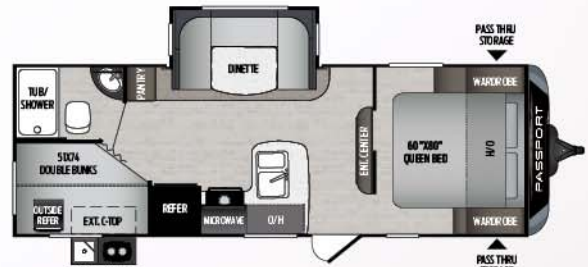
216RDWE | Single-slide couple's coach
SL SERIES | Weight: 3904 LBS. | Length: 22' 9"



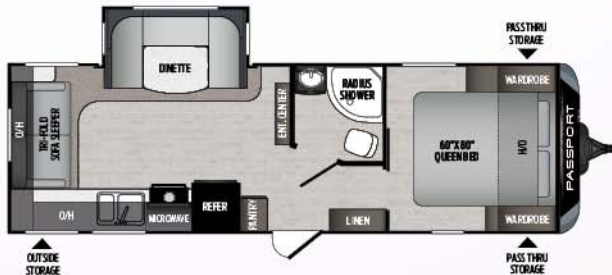
239MLWE | Murphy bed, bunkhouse
SL SERIES | Weight: TBD | Length: 22' 9"



2210RBWE | Couple's coach w/ oversized dinette
GT SERIES | Weight: 4140 LBS. | Length: 25' 5"



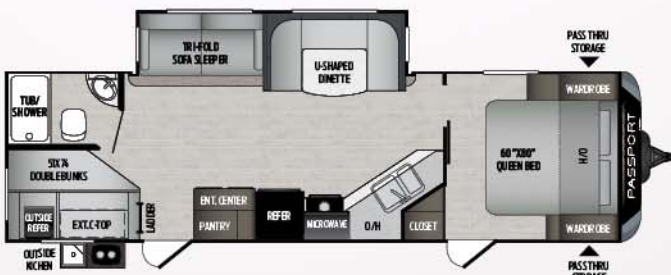
240BHWE | Super slide, bunkhouse w/ queen bed
SL SERIES | Weight: 4960 LBS. | Length: 27' 4"



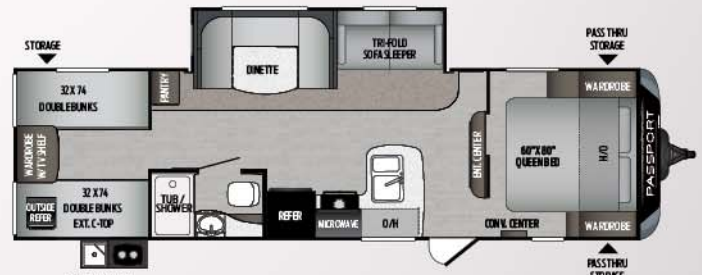
2521RLWE | Single slide, ultimate couples coach
GT SERIES | Weight: 3904 LBS. | Length: 22' 9"



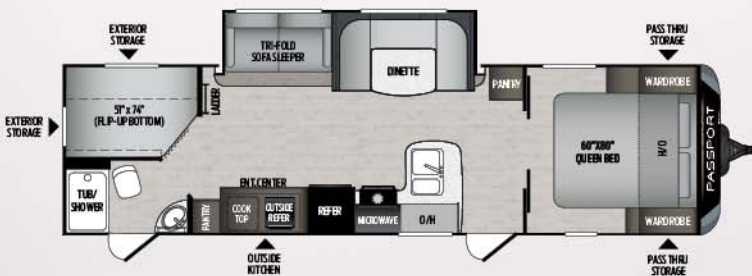
2710RBWE | Mud room bench w/ coat hooks
GT SERIES | Weight: TBD | Length: 31' 6"



2820BHWE | Multi-purpose bunkhouse w/ outdoor kitchen
GT SERIES | Weight: TBD | Length: 31' 6"



292BHWE | Couple's coach w/ oversized dinette
GT SERIES | Weight: TBD | Length: 22' 9"



2950BHWE | Murphy bed, bunkhouse
GT SERIES | Weight: 4140 LBS. | Length: 25' 5"

GT SERIES ULTRA-LIGHTWEIGHT TRAVEL TRAILERS

MODEL	WEIGHT	CARRYING CAPACITY	HITCH WEIGHT	FRESH WATER	WASTE WATER	GRAY WATER	LPG	LENGTH*	WIDTH	HEIGHT	AWNING
2210RB	4790	2210	555	43	38	38	40	25' 11"	8'	11' 0"	15'
2521RL	4994	2006	550	43	38	76	40	29' 10"	8'	10' 8"	15'
2600BH	TBD	TBD	TBD	TBD	TBD	TBD	TBD	TBD	TBD	TBD	TBD
2710RB	TBD	TBD	TBD	43	38	76	40	30' 11"	8'	10' 8"	20'
2820BH	TBD	TBD	TBD	43	38	76	40	31' 6"	8'	10' 8"	19'
2900RL	TBD	TBD	TBD	TBD	TBD	TBD	TBD	TBD	TBD	TBD	TBD
2950BH	6145	1655	705	43	38	76	40	33' 9"	8'	11' 2"	21'
3100QB	TBD	TBD	TBD	TBD	TBD	TBD	TBD	TBD	TBD	TBD	TBD
3351RL	6819	2661	680	43	76	76	40	37' 7"	8'	10' 11"	20'

SL SERIES ULTRA-LIGHTWEIGHT TRAVEL TRAILERS

MODEL	WEIGHT	CARRYING CAPACITY	HITCH WEIGHT	FRESH WATER	WASTE WATER	GRAY WATER	LPG	LENGTH*	WIDTH	HEIGHT	AWNING
175BH	3325	1175	390	43	38	38	40	21' 3"	8'	10' 5"	10'
197RB	3865	1735	460	43	38	38	40	23' 11"	8'	10' 4"	14'
199ML	3904	1496	425	43	38	38	40	22' 9"	8'	10' 4"	14'
216RD	TBD	TBD	TBD	43	30	30	40	22' 9"	8'	10' 4"	15'
239ML	4140	1260	425	43	38	38	40	25' 5"	8'	10' 4"	15'
240BH	4960	2040	535	43	30	30	40	27' 4"	8'	10' 8"	19'
292BH	5760	1440	755	43	30	30	40	32' 4"	8'	10' 8"	15'

WESTERN ULTRA-LIGHTWEIGHT TRAVEL TRAILERS

	MODEL	WEIGHT	CARRYING CAPACITY	HITCH WEIGHT	FRESH WATER	WASTE WATER	GRAY WATER	LPG	LENGTH*	WIDTH	HEIGHT	AWNING
GT SERIES WESTERN	197RBWE	4116	1484	442	43	30	30	40	24' 6"	8'	10' 4"	14'
	199MLWE	4090	1310	458	43	30	30	40	22' 9"	8'	10' 2"	12'
	216RDWE	TBD	TBD	TBD	43	30	30	40	22' 9"	8'	10' 4"	15'
	239MLWE	4232	1168	440	43	30	30	40	25' 5"	8'	10' 2"	10'
	240BHWE	4873	2127	500	43	30	30	40	27' 10"	8'	10' 7"	19'
SL SERIES WESTERN	292BHWE	5717	1483	670	43	30	30	40	32' 10"	8'	10' 9"	15'
	2210RBWE	4395	2105	452	43	30	30	40	25' 10"	8'	10' 7"	15'
	2520RLWE	5025	1975	616	43	30	60	40	29' 10"	8'	10' 7"	15'
	2950BHWE	6024	1776	660	43	38	76	40	33' 9"	8'	11' 2"	20'

DISCLAIMER: Product information is as accurate as possible as of the date of publication of this brochure. All features, floor plans, and specifications in this brochure are subject to change without notice. Please also consult Keystone's web site at www.keystonerv.com for more current product information and specifications. Tow Vehicle Disclaimer. CAUTION: Owners of Keystone recreational vehicles are solely responsible for the selection and proper use of tow vehicles. All customers should consult with a motor vehicle manufacturer or their dealer concerning the purchase and use of suitable tow vehicles for Keystone products. Keystone disclaims any liability or damages suffered as a result of the selection, operation, use or misuse of a tow vehicle. KEYSTONE'S LIMITED WARRANTY DOES NOT COVER DAMAGE TO THE RECREATIONAL VEHICLE OR THE TOW VEHICLE AS A RESULT OF THE SELECTION, OPERATION, USE OR MISUSE OF THE TOW VEHICLE. *Length is defined as the distance from the centerline of hitch pin/coupler to rear bumper of trailer.



more product detail at
www.keystonerv.com/Passport

STANDARDS AND OPTIONS

CHASSIS	INTERIOR FEATURES	SAFETY (CONTINUED)
Engineered specifically for each floor plan	Residential-style furniture with premium fabric	6FI receptacles
Tube-style bumper w/sewer hose storage (GT Series only)	Convenience center with slide, lights, awning, water system controls, and 110V receptacle	Carbon monoxide detector
Fully-welded outriggers	13,500 BTU A/C standard	Smoke alarm
Cambered for added structural support	30,000 BTU furnace	Fire extinguisher
Extra support cross members	Ducted, in-floor heating (GT Series only)	Propane gas leak detector
Electric slide-out system	6-gallon gas/electric DSI water heater (17.8 gal/hr)	Deadbolt lock on entrance doors
Enclosed, sealed and heated underbelly	Winterization-ready water system	Manual override on slide system
CONSTRUCTION	Residential durable Armstrong® vinyl flooring	Spare tire kit
Welded aluminum framed sidewalls	12 v DVD/CD/AM/FM stereo, AUX input, bluetooth and quality sound speakers (CD/DVD player N/A in Express)	WESTERN EDITION FEATURES
Seamless, laminated gel-coated filon exterior walls	LED, flat-screen HDTV, standard	Snow load roofs
High-density block foam insulation in sidewalls (R-7 insulation)	Residential light fixtures in slide room	Enclosed underbelly
Laminated aluminum framed floor 2" thick	Upgraded residential window treatments and valances	OPTIONS
One-piece, breathable Darco protective wrap	Residential-style interior doors	15,000 BTU A/C-option
R-11 high density block floor insulation	Upgraded leather furniture w/tri-fold sofa	Aluminum Wheels (SL Series only)
Stamped galvanized 5" thick crowned rafters	LED interior lights	50 AMP 2nd A/C Prep (For models longer than 30')*
One piece seamless Alpha Superflex TPO roof	Vaulted ceiling (GT Series only)	
R-11 ceiling rolled fiberglass insulation	(10) USB charging ports	
EXTERIOR FEATURES	KITCHEN	
Insulated lockable radius baggage doors with hold backs	6 cu. ft. double-door RV refrigerator (SL Series only)	
Insulated radius entrance door with screen door	8 cu. ft. refrigerator (GT Series only)	
Double entry steps at main door (SL Series only)	Glass-top stove	
MORryde® Step Above™ entry steps (GT Series only)	Metal high-rise faucet	
Heavy-duty front mechanical jack (Power tongue jack on the GT Series)	Microwave with carousel	
Four (4) scissor-style stabilizer jacks	3-burner, high output range	
Two(2), 20lb. propane bottles with flip-top cover	Range hood	
Dual battery rack over A-frame	Shaker style wood cabinets	
Rain gutters with extended downspouts	Gas oven (N/A 153ML, 175BH)	
Electric adjustable awning	Seamless Countertops	
Lighted exterior pass through storage compartment w/motion light*	Stainless steel sink w/pull-down faucet	
Portable outside grill (select models) Not all outdoor kitchen models	Trash can storage (select models)	
Patio entrance light	BEDROOM (MAIN)	
Exterior shower w/ hot and cold taps	60" x 80" queen size bed with quilted bedspread (GT Series only)	
Front diamond plate	Oversized wardrobes	
Molded fiberglass front cap w/KeyShield™ rock guard (GT Series only)	Nighttime reading lights	
Fold-away exterior grab handle (main door, GT Series only)	Under-bed storage	
Load equalization axles (spread axle design)	Bedside power outlets w/USB ports	
Dexter® E-Z lube axles	BATHROOM	
Exterior speakers	Solid wood, custom-built medicine cabinet w/mirror	
Exterior light at dump valves	Tub surround with built-in shelves	
15" aluminum wheels	Radius shower curtain	
15" radial tires	Pedestal foot flush toilet	
Aluminum step	12v power exhaust fan	
Upgraded graphics package	SAFETY	
Electric power tongue jack	Four-wheel electric brakes	
LED awning lights	Breakaway switch	
Black tank flush	Heavy duty safety chains with clasp	
Satellite prep	Tinted safety glass windows	
Solar prep	Multiple emergency egress windows	
Backup camera prep (GT series only)		

BUILT FOR THE LONG HAUL



PRINT-3-2018

