

COUGAR: Fifth Wheels



Cougar

by Keystone



EASTERN EDITION

Cougar
by Keystone

www.keystone-cougar.com



WHERE LUXURY & LIGHTWEIGHT MEET

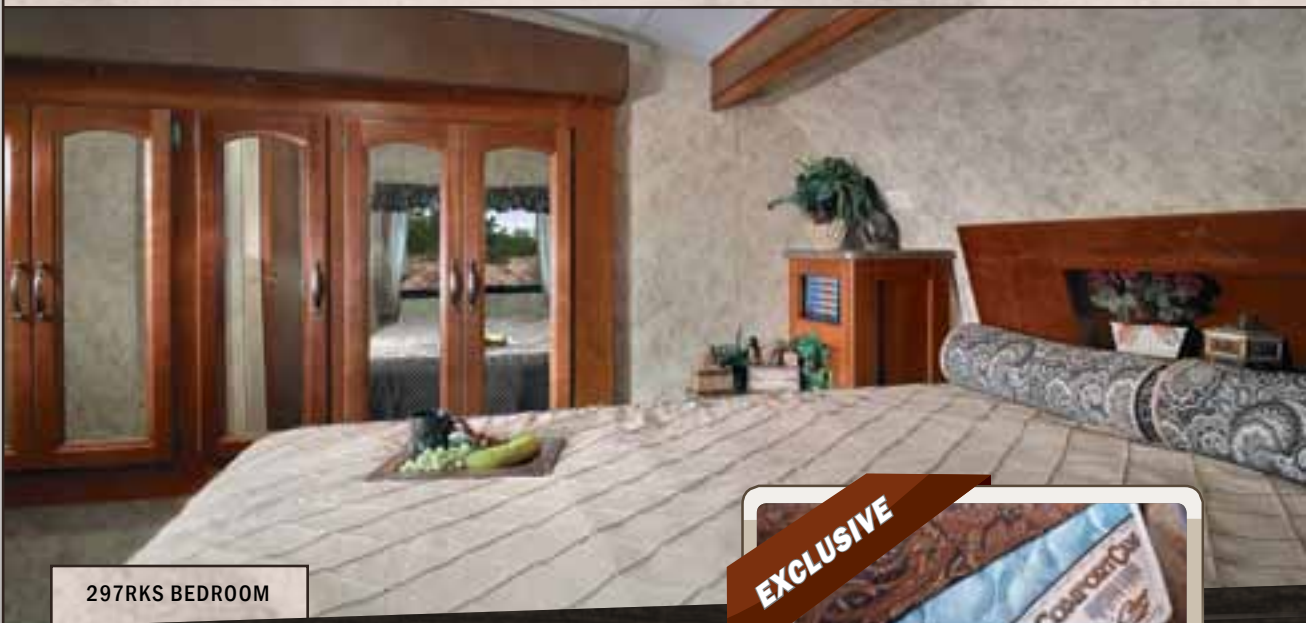
Cougar
by Keystone



297RKS (SHOWN IN SILVER SAGE DECOR)

IT IS OUR GOAL TO GIVE EVERY COUGAR A RESIDENTIAL LOOK AND FEEL WITH ADDED FEATURES THAT YOU AND YOUR FAMILY WILL APPRECIATE.

- Large Bathroom Sink
- Porcelain Foot Flush Toilet
- Residential Bedroom and Bathroom Door Heights
- LED Vanity Mirror Lights
- Residential Comfort Camp III Pillow Top Mattress
- Unbeatable Wardrobe Storage
- Large Vanity Mirror
- Largest Picture Windows in its Class with Day and Night Shades



297RKS BEDROOM

Designed with Your Family's Needs in Mind

EXCLUSIVE



EXCLUSIVE TO COUGAR:
COMFORT CAMP III PILLOW TOP MATTRESS



327RES (SHOWN IN AUTUMN NIGHT DECOR)

- Custom Colored Fiberglass Front Cap
- Upgraded Residential Beauflor® Resilient Flooring
- Solid Surface Countertops
- Graphics Package
- Upgraded Comfort Camp III Mattress (Silver Label Edition)
- Main Entry Step Light
- Battery Disconnect



THE 327RES HAS QUICKLY BECOME ONE OF OUR MOST POPULAR MODELS.

The interior boasts an abundance of storage space and its residential elegance is topped off by extra large windows (all of which open for cross ventilation).



AVAILABLE ON THE COUGAR 327RES

EXCLUSIVE

Cougar's one of a kind ottoman functions as a foot rest, storage area, coffee table or even as a sofa extension.

Having guests? Simply slide the ottoman under the sofa and fold out the air mattress hide-a-bed for a great night's sleep.

Storage, Comfort and Convenience

SRX



325SRX LIVING AREA (SHOWN IN AUTUMN NIGHT DECOR)



Plenty of room for golf cart, four wheeler, dirt bikes or full dressed cruiser.

COUGAR 325SRX GARAGE



ADJUSTABLE RAMP LEGS

Part of what has made Cougar such a success over the years is our ability to incorporate customers wants and needs into a variety of floorplans. The Cougar 325SRX combines a garage model fifth wheel with a residential main living area. This creates the perfect unit for a variety of hobbies.

Variety



LOOK FOR WALK
AROUND VIDEOS
ON OUR WEBSITE!



327RES KITCHEN

COUGAR "EXECUTIVE CHEF KITCHEN" INCLUDES:

- ① Countertop Extension - Most Models
- ② Sink Covers
- ③ Dedicated Trash Can Storage
- ④ Large Solid Surface Countertop
- ⑤ 22" Oven
- ⑥ Easy to Reach Microwave Oven
- ⑦ Solid Cherry Wood Cabinet Doors and Drawers
- ⑧ Gas Struts on Overhead Cabinet Doors
- ⑨ 8 Cubic Foot Refrigerator - N/A on 1/2 Ton Series
- ⑩ Best in Class Pantry Storage
- ⑪ Full Extension Drawer Guides
- ⑫ Utensil Drawer - All Models
- ⑬ Pots and Pans Drawers - Most Models



KITCHEN STORAGE



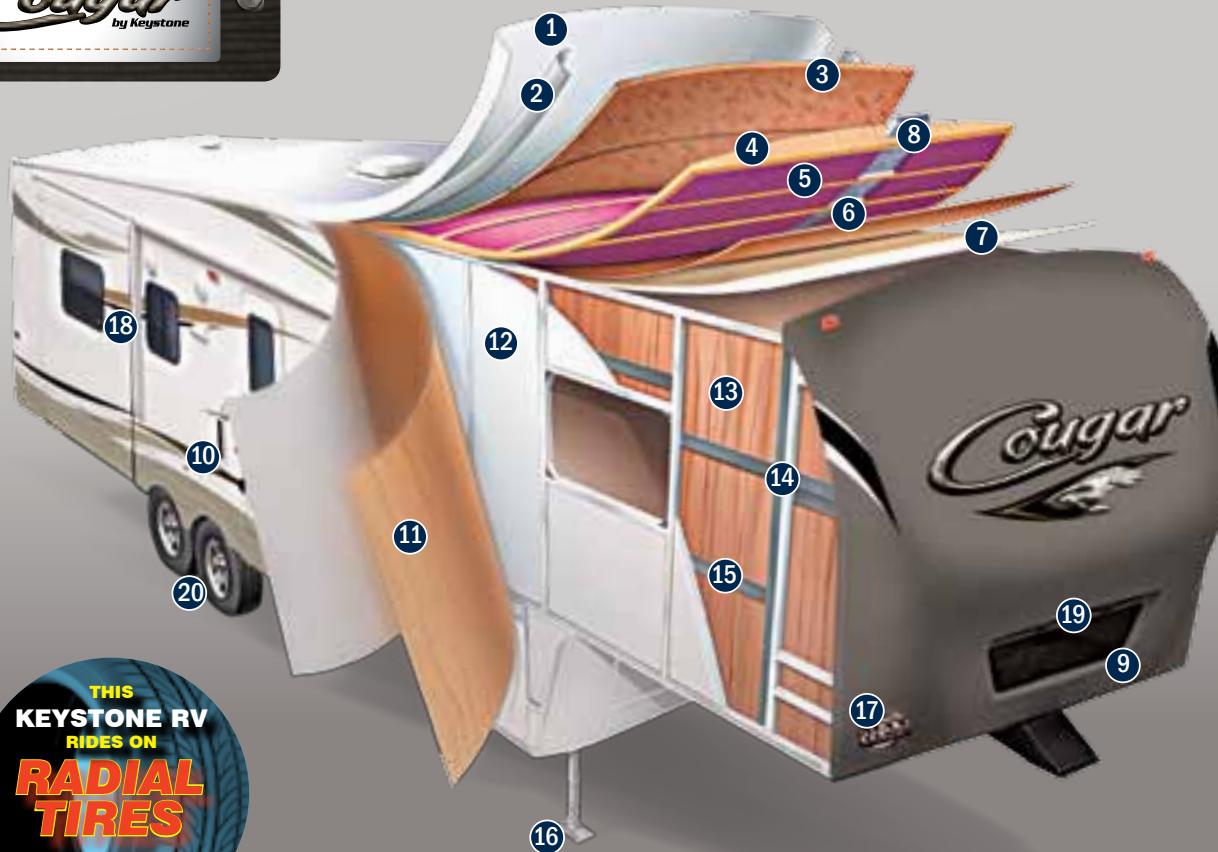
Cougar's commitment to having the **best storage in its class** is evident in the deep pots and pan drawers as well as our large easy to reach pantries.



COUGAR FIFTH WHEELS HAVE SET A HIGHER STANDARD WITH **BEST IN CLASS** PASS THROUGH STORAGE.

Maximum Storage Capacity

Cougar
by Keystone



(5-SIDED ALUMINUM SUPER STRUCTURE)

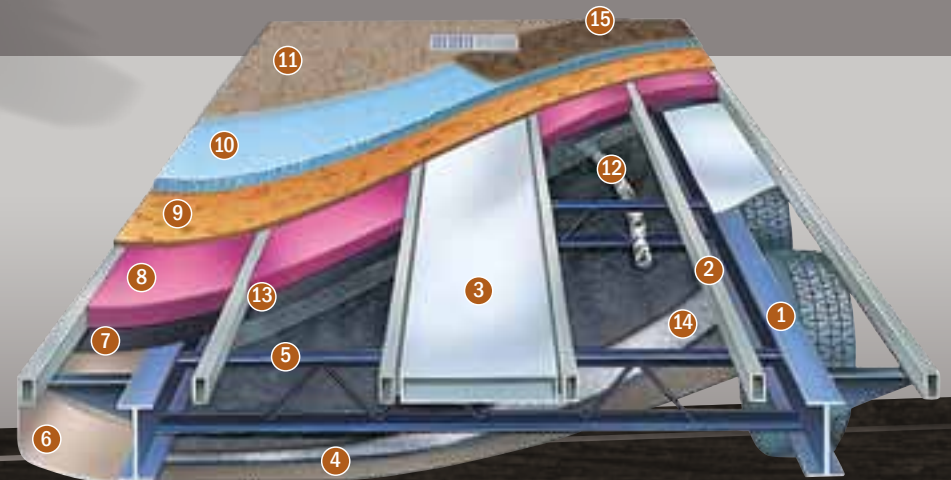
- 1 One-piece EPDM rubber roof membrane with 12 year warranty
- 2 Radius roof transition molding
- 3 3/8" roof decking
- 4 5" fabricated rafters on 16" centers
- 5 Fiberglass insulation (R-14)
- 6 Ceiling decking Luan backer
- 7 Vinyl ceiling panel
- 8 Triple insulated, foam-core air conditioning duct
- 9 Hitch Vision (Patented)
- 10 Gel-coated Filon® fiberglass sidewall
- 11 1/8" Luan board (second layer in select models)
- 12 Solid block foam insulation (R-9)
- 13 Interior decorator wall board
- 14 2" welded aluminum wall studs
- 15 Electro-galvanized sheet (EGS) metal backing strips
- 16 Easy access adjustable snap jack pins
- 17 Increased "Max Turn" turning radius
- 18 Tinted safety glass windows
- 19 Docking lights
- 20 E-Z lube axles

THIS
KEYSTONE RV
RIDES ON
**RADIAL
TIRES**

MEETS OR EXCEEDS ALL U.S.
DEPARTMENT OF TRANSPORTATION
(D.O.T.) SAFETY STANDARDS

FLOOR (R-14) + (R-15)

- 1 8" and 10" Steel "rolled" I-beam
- 2 3" Welded aluminum floor joists
- 3 3" Large-capacity insulated heat duct
- 4 1/4" Enclosed underbelly
- 5 Welded steel cross members
- 6 Full radius wrap aluminum enclosure
- 7 Woven moisture and vapor barrier
- 8 Fiberglass insulation (R-14)
- 9 5/8" Seamless floor decking
- 10 Carpet padding
- 11 Residential-grade carpeting with stain protectant
- 12 2" Heat duct from furnace into underbelly
- 13 Heated, enclosed water lines
- 14 Astro-Foil insulation barrier (R-15)
- 15 Upgraded residential Beauflor® resilient flooring



Cougar Construction

Cougar
by Keystone

PATENTED
**HITCH
VISION**
"NO LOOKING
BACK"



COUGAR "HITCH VISION"

Hitch Vision moves the dial forward in what customers expect from an RV. There's no looking back!

Hitch Vision gives the fifth wheel user complete confidence to back up and align their truck to Cougar's extended hitch pin using only the built-in mirror for guidance. Dual automotive LED docking lights, which can be controlled by the E-Z Camp Cougar Remote, allow you to load or unload camping gear day or night. (Hitch Vision also comes in handy when using the E-Z Camp Cougar Remote to raise and lower landing gear.)

Once you've used Hitch Vision, "there's no looking back" to the inconvenience of turning or straining to see your fifth wheel.

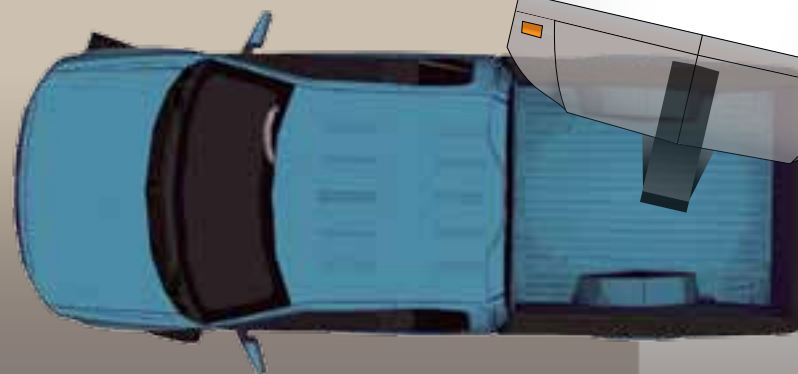


MAX TURN

Combining focused design and unique product specifications, Max Turn Technology is the leader in optimum turn radius:

Unlike the competition, Cougar uses continuous contoured tubular steel for optimum strength and support behind the engineered tapered fiberglass front cap.

Also, Cougar is equipped with a heavy duty extended hitch. Combined - Max Turn Technology makes turning and maneuvering a breeze.



VIDEO



LOOK FOR WALK
AROUND VIDEOS
ON OUR WEBSITE!

Advancing the Industry

COUGAR

7

WWW.KEYSTONE-COUGAR.COM

Cougar
by Keystone



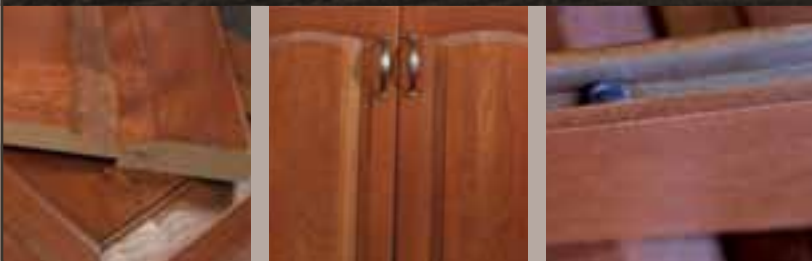
DSI

Annual RVDA DEALER SATISFACTION INDEX

COUGAR HAS EARNED THE DSI AWARD AN UNPRECEDENTED 4 YEARS IN A ROW!

THE DSI (DEALER SATISFACTION INDEX) AWARD RATES THE LEVEL OF SATISFACTION THE DEALERS HAVE IN A MANUFACTURER. IT RATES MANUFACTURERS IN MANY AREAS SUCH AS: PRODUCT DESIGN, PRODUCT RELIABILITY & QUALITY, WARRANTY SUPPORT, AND PARTS SUPPORT.

SELECT GRADE CHERRY WOOD



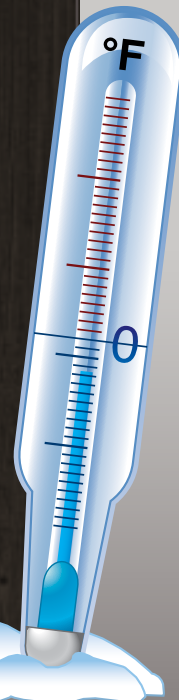
At Cougar we are always trying to think of new ways to add value. With the new "Cougar Cherry" cabinet doors we were the first in our class to use true select grade cherry wood on ALL our doors and drawers. We also use teflon spacer balls in all of our cabinet doors to prevent warping, bending and cracking.



ZERO° DEGREE RATED

Cougar has been zero degree tested. The Polar Package Plus allows you to camp to zero degrees without worry of your tanks or water lines freezing up.

We also add upgraded insulation to our slide-out floors to control the hot and cold exchange and unlike our competition we merge our skirt metal to the I-Beam for complete enclosure of your fifth wheel underbelly.



CONTROL EVERYTHING WITH THE COUGAR E-Z CAMP REMOTE



Docking Light



Landing Gear



Electric Slide Out



High Emittance LED Flashlight



Electric Awning



Cougar Command Center features back lighted switches and conveniently places all of your controls in one place.



Cougar comes outfitted with a black tank flush hook-up. This feature keeps the black tank clean and trouble free.



Cougar
by Keystone

Equa-Flex Suspension comes standard on all Cougar fifth wheels.



32" LCD TV
BEST IN CLASS
WITH SWING ARM



Cougar slide-outs feature solid hardwood fascia.



Another Cougar first: The rear storage rack provides a quick slide-away storage alternative. (most models)



The Cougar docking station conveniently locates and protects your outside hook ups for quick and easy set up. Also includes battery disconnect. (FW only)



Cougar's oversized sofa converts into a true 60" x 80" queen sized air mattress bed which is easy to inflate and deflate by an electric pump.



Cougar provides an outside LP gas hook-up that is standard on all models.

ADJUSTABLE
SMART SLIDE
FREE STANDING
DINETTE



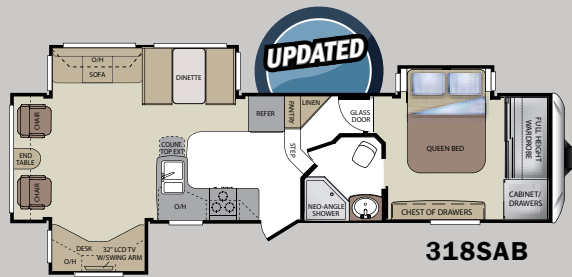
The exclusive "Smart Slide" free standing table slides back and forth to increase space between seating and the fixed dinette table.



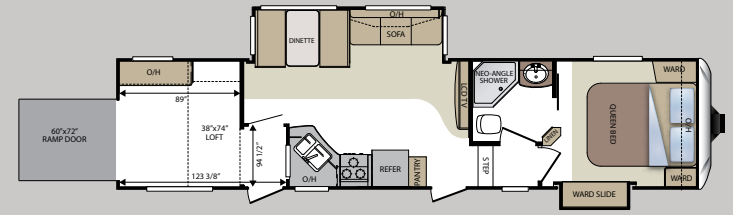
The Cougar Advantage

Cougar
by Keystone

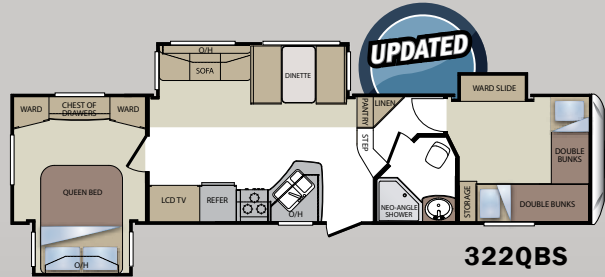
FIFTH WHEELS



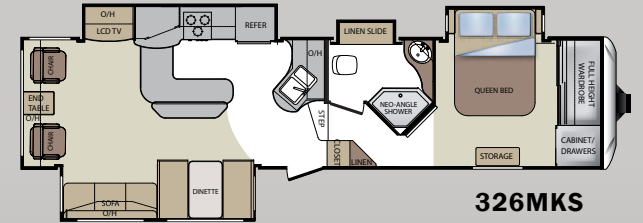
318SAB



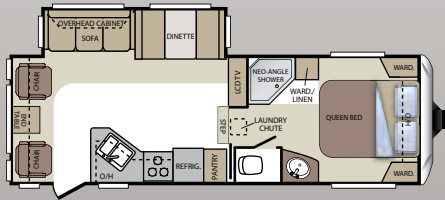
325SRX



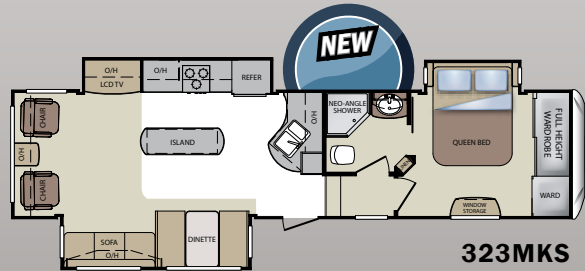
322QBS



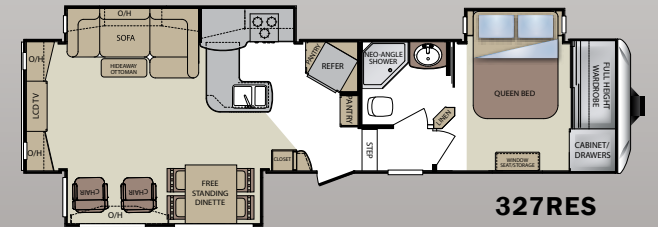
326MKS



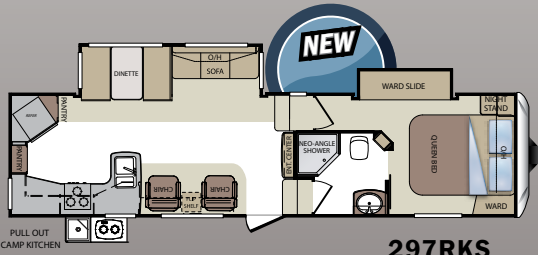
276RLS



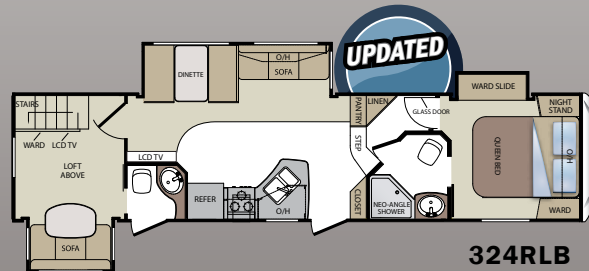
323MKS



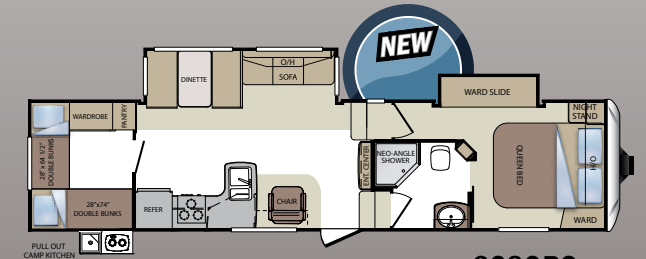
327RES



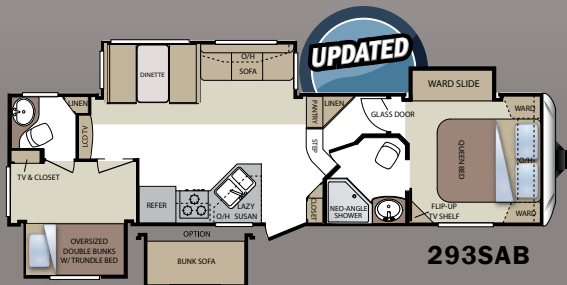
297RKS



324RLB



328QBS



293SAB

FIFTH WHEELS

MODEL	276RLS	297RKS	293SAB	318SAB	322QBS	323MKS	324RLB	325SRX	326MKS	327RES	328QBS
Shipping Weight	7212	8755	8831	9210	9489	TBD	10133	9270	9920	9950	9210
Carrying Capacity	2968	3165	2704	2445	2371	TBD	1782	2930	2045	1995	2710
Hitch	1380	1520	1375	1525	1460	TBD	1515	1800	1565	1545	1520
Length	28' 9"	33' 9"	33' 5"	34' 7"	36' 6"	36' 1"	36' 3"	36' 7"	36' 2"	36' 5"	36' 6"
Height	11' 8"	12'	12'	12'	12'	12'	13'	13'	12'	12'	12'
Fresh Water	60	60	60	60	60	60	60	60	60	60	60
Waste Water	38	38	76	38	38	38	76	38	38	38	38
Gray Water	76	76	76	76	76	76	76	76	76	76	76
Awning Length	19'	20'	17'	16'	17'	11'	17'	17'	12'	12'	19'

VIEW SNAPSHOT PHOTOS OF FLOORPLAN INTERIORS AT WWW.KEYSTONE-COUGAR.COM

STANDARDS, OPTIONS AND DECORS

COUGAR STANDARDS

- Residential porcelain toilet with foot pedal
- E-Z lube hubs on axles (all models)
- Snap jack pins (all fifth wheels)
- All Fifth Wheel models at or under 12' exterior height (except 324, 325)
- 30,000 BTU furnace
- One-piece seamless rubber roof
- All windows in main slide out open
- Cherry wood cabinet doors
- Solid hardwood slide fascia

"CAMPING IN STYLE"* PACKAGE

- Day and Night Shades
- Laundry chute (some models)
- Black trim safety glass windows (tinted to keep the sun out)
- Microwave oven with turn style
- Aluminum framed sidewalls, floor, front and rear walls, slide rooms
- 13,500 BTU air conditioner
- Raised-panel cabinet doors
- Cougar Comfort Camp III pillow top mattress

VALUE PACKAGE*

- True home CD/DVD system with speakers and separate zones (12-Volt compatible); MP3 player hookup on stereo
- Gas/electric water heater with quick recovery
- Residential shower/tub surround
- TV antenna
- Satellite/Cable hook-up
- Gel coated Filon® fiberglass
- Full walk-on roof
- Fiberglass walls
- Rear stabilizer jacks
- Equa-Flex Suspension
- Max Turn Technology front cap (fifth wheels only)

CONVENIENCE PACKAGE

- Outside shower*
- Residential refrigerator front*
- Spare tire*
- XL grab handle*

SAFETY MUST-HAVES*

- Manual backup on all main slide outs
- T-Mold bulb seals on all slide outs to keep slider sweeps on your slide out (stays on in hot weather)
- LP sensor
- Smoke detector
- Fire extinguisher
- Carbon monoxide detector

DRY CAMPING FEATURES

- 12 Volt stereo/MP3 compatible
- Large fresh, gray & black tanks (all models)
- All slide-out lights are 12 Volt
- Space for dual batteries
- Under 12' exterior height (most models)
- Entire underbelly enclosed to keep debris off tanks, water lines, etc.
- All lights 12V compatible

COUGAR OPTIONS

- 32" LCD TV (fifth wheels only)*
- Outside speakers*
- Black tank flush*
- Electric awning*
- Cougar remote*
- Entertainment storage hook-up (fifth wheels only)*
- Outside LP quick connect*
- Radial tires*
- Polar Package Plus*
- 8 cu. ft. refrigerator* (292, 293, 318, 322, 324, 325, 326, 327 only)
- 16" wheels* (292, 293, 318, 322, 324, 325, 326, 327 only)
- Dual pane windows
- 19" LCD TV (324, 322, 325)*
- Slide in/out bike/storage rack (N/A on 245, 276 and 325)
- Air mattress sofa with storage

- Swivel rocker (276, 292, 302, 318, 326, 327)
- Second swivel rocker
- "Smart Slide" free standing dinette (mandatory in 327RES)
- 15,000 BTU A/C
- Aluminum wheels
- Recliners (327, 318, 326, 292 only)

SILVER LABEL PACKAGE*

- Custom colored fiberglass front cap
- Upgraded residential Beauflor® resilient flooring
- Solid surface countertops
- Silver label graphics package
- Upgraded Comfort Camp III pillow top mattress (silver label edition)
- Main entry step light
- Battery disconnect

* Mandatory option



DARE TO COMPARE

- #1 selling fifth wheel in its class (10 years in a row)
- Highest trade-in and resale value in the industry on average
- Hitch Vision (patented) front cap with docking lights & Max Turn Technology (fifth wheels only)

- Exclusive factory installed bike/storage rack on most fifth wheels and travel trailers
- Fully enclosed, underbelly with heated and enclosed dump valves
- 16.2 Gallons per hour - quick recovery water heater (great for bunkhouses)
- Oversized pass-thru storage doors
- Slide out seal is mounted in a "T" track (no sticky tape to hold slide seals on)
- Solid surface countertops

- Extra large slide-out windows open for cross ventilation
- Panoramic picture window at all dinettes
- Day/night shades
- Porcelain foot flush toilets
- Five side welded aluminum super structure
- R-9 sidewall, R-14 roof, R14+R15 floor insulation and R-15 astro-foil in the slide out
- Fully ducted air conditioning featuring triple insulated, foil wrapped, light weight ducts

- 12 Volt compatible for dry camping
- Outside docking station (fifth wheels only)
- Back lit inside command center (most fifth wheels)
- True cherry wood cabinet doors
- Cougar remote with flashlight
- Polar package plus
- Full extension drawer guides
- Black tank flush
- Battery disconnect



LOOK FOR WALK AROUND VIDEOS ON OUR WEBSITE!

Discover Which Options are Right for You