



# HIDEOUT

**TRAVEL TRAILER | FIFTH WHEEL**



**LUXURY**  
COMES STANDARD

WWW.KEYSTONERV.COM/HIDEOUT

# HIDEOUT

RIGHT FEATURES. RIGHT PRICE.

RIGHT NOW





## HIDEOUT LUXURY TRAVEL TRAILERS

With many new upscale luxury features inside and out the Hideout is more than just a travel trailer. Packed full of fun features the Hideout is the perfect choice for your family.



## HIDEOUT LHS SERIES TRAVEL TRAILERS

When it comes to value, comfort and endless standard features Hideout has you covered. Enjoy high-end value without the high-end price tag with the Hideout LHS Series!



## HIDEOUT LUXURY FIFTH WHEELS

The best value in the fifth wheel market, Hideout Luxury fifth wheels offer fully featured, exciting interior & exterior appeal and top selling floorplans at the best price in the industry.

**HIDEOUT**  
TRAVEL TRAILERS

PGS. 4-12 ::::::::::

**HIDEOUT**  
LHS SERIES

PGS. 13-16 ::::::::::

**HIDEOUT**  
FIFTH WHEELS

PGS. 17-23 ::::::::::

31RBDS SHOWN IN WEDGEWOOD DECOR

OPTIONAL TRI-FOLD SLEEPER SOFA

HIDEOUT LUXURY TRAVEL TRAILERS



**HIDEOUT**  
TRAVEL TRAILERS

**LUXURY COMES STANDARD**  
COMFORT AND LUXURY FOR THE WHOLE FAMILY

27DBS BUNKS



27DBS SHOWN IN SILVER BIRCH DECOR



30RKDS SHOWN IN MAPLECREST DECOR



HIDEOUT LUXURY WARDROBE SLIDE



HIDEOUT LUXURY TRAVEL TRAILERS

***RELAX...THERE'S A HIDEOUT FLOORPLAN THAT WILL MEET ALL OF YOUR FAMILIES NEEDS.***

**WITH A UNIQUE LINEUP OF FLOORPLANS THAT ARE LOADED WITH STANDARD FEATURES, HIDEOUT'S RESIDENTIAL STYLE INTERIOR IS YOUR HOME AWAY FROM HOME.**

# HIDEOUT TRAVEL TRAILER LUXURY PACKAGE



LCI LIGHTED AWNING



32" FLAT PANEL TELEVISION



7 CU. FT. ATWOOD HELIUM REFRIGERATOR  
W/ DECORATIVE REFRIGERATOR INSERT



BLACK TANK FLUSH



UPGRADE GRAPHICS PKG



JENSEN CD/DVD PLAYER



CENTRAL CONTROL PANEL



E-COATED WHEELS (TT)



KITCHEN COUNTER TOP  
EXTENSION



X-ENTRY ASSIST HANDLE



EXTERIOR TV HOOKUP/  
CABLE AND BRACKET



NIGHT SHADES IN  
LIVING ROOM



CROWN MOLDING  
IN LIVING ROOM



POCKET DOORS  
IN BEDROOM



LAUNDRY CHUTE  
IN BEDROOM



FOLDING DINETTE TABLE

## DARE TO COMPARE



COLD MOUNTAIN PACKAGE  
HEATED & ENCLOSED UNDERBELLY



81" INTERIOR HEIGHT



PRE-DRILLED AND SCREWED  
WOOD STYLES



OVERSIZED STORAGE DOORS (TT)



HURRICANE STRAP REINFORCED  
ROOF & WALLS

# HIDEOUT LUXURY TRAVEL TRAILER

## CONSTRUCTION

- |   |   |  |
|---|---|--|
| 1 Continuous Steel I-Beam Powder Coated Frame | 9 Lighted Electric Color Matched Awning | 17 Radius Skirting   |
| 2 Walkable Crowned TPO Membrane Roof          | 10 R-7 Insulation Throughout            | 18 Easy Lube Axles   |
| 3 Hurricane Strap Reinforced Structure        | 11 Dual Battery Storage Tray            | 19 0.24 Aluminum Baked Enamel Siding   |
| 4 Oversized Pass Through Storage              | 12 XL Entry Assist Handle               | 20 Black Framed, Tinted Safety Glass Windows   |
| 5 Diamond Plate Front Protector               | 13 5/8" Seamless Floor Decking          | 21 Rain Gutter with Extended Down Spouts   |
| 6 One Piece Rubber Roof                       | 14 E-Coat Corrosion Prevention Wheels   | 22 Fender Skirts   |
| 7 3/8" Roof Decking                           | 15 Four Stage Slide Room Seals          | 23 13,500 BTU Ducted Air Conditioner (Opt. 15K)  |
| 8 Dual 30 Lb. LP Bottles                      | 16 Easy Lift Steps                      | 24 Bumper Sewer Hose Storage   |
|   |   | 25 Exterior TV Mount   |
|   |   | 26 Industry Top Performing Stabilizer Jacks<br>(Fastest Extending/Retracting, Trouble Free Stabilizer on the Market) |

ALL OF YOUR  
OUTDOOR KITCHEN  
NEEDS ARE CLOSE  
AT HAND



OUTDOOR AND CAMP  
KITCHEN FEATURES  
ARE NOT AVAILABLE  
ON ALL MODELS



**SCAN HERE**  
TO TAKE A 360° INTERIOR VIRTUAL  
TOUR OF THE HIDEOUT TRAVEL TRAILER.  
MORE VIRTUAL TOURS ARE AVAILABLE  
AT KEYSTONERV.COM



**LUXURY**  
COMES STANDARD

HIDEOUT LUXURY TRAVEL TRAILER

# FLOORPLANS



**25RKS**

SHIPPING WEIGHT: 6053 | LENGTH: 29' 8"



**27RBS**

SHIPPING WEIGHT: 6611 | LENGTH: 31' 3"



**26RLS**

SHIPPING WEIGHT: 6334 | LENGTH: 29' 11"



**28BHS**

SHIPPING WEIGHT: 6726 | LENGTH: 32' 3"

ENJOY THE COMFORTS OF ALL NEW CAMP KITCHEN  
(AVAILABLE ON HIDEOUT MODELS 27RBS, 28BHS)



**27DBS**

SHIPPING WEIGHT: 6505 | LENGTH: 31' 6"





# HIDEOUT LUXURY TRAVEL TRAILER FLOORPLANS



**28RLDS**  
SHIPPING WEIGHT: 7380 | LENGTH: 33' 2"



**30FKDS**  
SHIPPING WEIGHT: 7350 | LENGTH: 33' 2"



**29BHS**  
SHIPPING WEIGHT: 7225 | LENGTH: 34' 3"



**30RKDS**  
SHIPPING WEIGHT: 7440 | LENGTH: 33' 3"



**29BKS**  
SHIPPING WEIGHT: TBD | LENGTH: 33' 11"

FULLY FUNCTIONAL OUTDOOR KITCHEN  
(AVAILABLE ON HIDEOUT MODELS 27RBS, 20BKS, 31RBD5, 30RBT5)



# HIDEOUT LUXURY TRAVEL TRAILER

## FLOORPLANS



**30RLDS**

SHIPPING WEIGHT: 7395 | LENGTH: 33' 7"



**31RBTS**

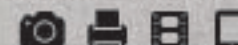
SHIPPING WEIGHT: 8110 | LENGTH: 36' 4"



**31RBDS**

SHIPPING WEIGHT: 7660 | LENGTH: 35' 8"

VISIT OUR ALL NEW WEBSITE TO VIEW INTERIOR PHOTOS & MUCH MORE AT [WWW.KEYSTONERV.COM](http://WWW.KEYSTONERV.COM)



## HIDEOUT LUXURY TRAVEL TRAILER SPECIFICATIONS

MODEL	25RNS	26RLS	27DBS	27RBS	28BHS	28RLDS	29BHS	29BKS	30FKDS	30RKDS	30RLDS	31RBS	31RBTS	366RDS	38FDBS	38FKDS	38FDBS
SHIPPING WEIGHT	6053	6334	6595	6691	6726	7380	7225	780	7350	7440	7395	7660	8110	8420	8340	8460	8190
CARRYING CAPACITY	1647	1501	1360	2689	2969	2445	2450	180	2620	2315	2460	2005	1660	1590	1660	1445	1710
HITCH WEIGHT	700	835	865	860	895	1025	875	180	1170	955	1055	865	970	1210	1205	1105	1100
EXTERIOR LENGTH*	29' 8"	29' 11"	31' 6"	31' 3"	32' 3"	33' 2"	34' 3"	180	33' 2"	33' 3"	33' 7"	35' 8"	36' 4"	39' 10"	39' 11"	39' 11"	39' 11"
EXT HEIGHT	11' 0"	11' 0"	11' 0"	11' 3"	11' 8"	11' 2"	11' 2"	180	11' 2"	11' 2"	11' 2"	11' 2"	11' 2"	11' 5"	11' 2"	11' 2"	11' 2"
FRESH WATER	45	45	45	45	45	45	45	180	45	45	45	45	45	45	45	45	45
WASTE WATER	38	38	32	38	38	38	38	180	38	38	38	38	38	38	38	38	38
GREY WATER	70	32	38	32	70	76	38	180	76	76	38	38	38	38	38	76	38
LPG CAPACITY	40	40	60	40	40	40	40	180	40	40	60	40	40	40	40	60	40

DISCLAIMER: Product information is as accurate as possible as of the date of publication of this brochure. All features, floor plans, and specifications in this brochure are subject to change without notice. Please also consult Keystone's web site at [www.keystonerv.com](http://www.keystonerv.com) for more current product information and specifications. Tow Vehicle Disclaimer: CAUTION: Owners of Keystone recreational vehicles are solely responsible for the selection and proper use of tow vehicles. All customers should consult with a motor vehicle manufacturer or their dealer concerning the purchase and use of suitable tow vehicles for Keystone products. Keystone disclaims any liability or damages suffered as a result of the selection, operation, use or misuse of a tow vehicle. KEYSTONE'S LIMITED WARRANTY DOES NOT COVER DAMAGE TO THE RECREATIONAL VEHICLE OR THE TOW VEHICLE AS A RESULT OF THE SELECTION, OPERATION, USE OR MISUSE OF THE TOW VEHICLE. \*Length is defined as the distance from the centerline of hitch pin/coupler to rear bumper of trailer. 11.13

# YOUR HOME Away FROM HOME

## 38BHDS

### Front bunkhouse with rear bedroom

We've built our bunkroom with plenty of storage for all the clothes and toys. Best of all, everyone has their own space when it's time to settle in for the night.

## 38FDDS

### Front living room with rear bedroom

Hideout's family friendly living room comes packed to meet the needs of any sized family. Your family is sure to enjoy the increased spaciousness of our front living room.

## 38FKDS

### Front kitchen with rear bedroom

Spacious front kitchen with additional seating for guests. Transitional bunkroom for sleeping or office space.

## 38FQDS

### Front bedroom with additional rear bedroom

Hideout's bedrooms provide spacious sleeping quarters and loads of storage space for a great night's sleep.

## HIDEOUT LUXURY TRAVEL TRAILER FLOORPLANS



38BHDS

SHIPPING WEIGHT: 8420 | LENGTH: 39' 10"



38FDDS

SHIPPING WEIGHT: 8340 | LENGTH: 39' 11"



38FKDS

SHIPPING WEIGHT: 8460 | LENGTH: 39' 11"



38FQDS

SHIPPING WEIGHT: 8190 | LENGTH: 39' 11"

# STANDARDS & OPTIONS

## HIDEOUT LUXURY PACKAGE

- \* Night Shades in Living Area
- \* Kitchen Countertop Extension
- \* 32" TV
- \* TV Bracket w/Disconnect for Outside Use
- \* Exterior TV Hookup/Cable & Bracket
- \* XL Entry Assist Handle
- \* 4 Interior Surround Sound Speakers
- \* Black Tank Flush
- \* Lighted Adjustable Power Awning
- \* Upgraded Graphics Package
- \* Jensen DVD/CD/MP3 Stereo
- \* Wood Privacy Pocket Doors in Bedroom
- \* Hidden Laundry Chute
- \* Adjustable Folding Dinette Table
- \* Ceiling Crown Molding in Living Area
- \* Cold Mountain Package
- \* Central Control Panel
- \* 7 Cu. Ft. Refrigerator
- \* Stainless Steel Appliances

## EXTERIOR

- \* Entrance Door Featuring Integrated Strut
- \* Walk on Roof
- \* Ladder Backers
- \* Powder Coated I-Beam Frame
- \* Cambered Chassis
- \* Two Heavy Duty Stabilizer Jacks
- \* Easy Lube Axles
- \* Full Length Outriggers
- \* Dual Battery Rack
- \* Two 50 lb. LP Bottles
- \* Awning Color Coordinated
- \* Heated and Enclosed Underbelly
- \* Fender Skirts
- \* Exterior Speakers
- \* Black Radius Window Frames

- \* TV Antenna with Booster
- \* Radio Antenna
- \* Roof Vents
- \* Cable Hook Up
- \* GFI Electrical Outlets
- \* Seamless One Piece Roof
- \* Radius Skirting
- \* Oversized Pass Thru Storage
- \* Hose Storage in the Bumper
- \* .024 Gauge Aluminum Siding
- \* R-7 Insulation Throughout
- \* Rain Gutters with Down Spouts
- \* Four Stage Slide Room Seals
- \* Roto-Cast Seamless Holding Tanks
- \* Hurricane Straps Reinforced Structure

## INTERIOR

- \* Radius Interior Bath Walls
- \* Residential Refrigerator (58BHDS, 58FDDS, 58FKDS, 58FQDS only)
- \* Kitchen Countertop Extension
- \* Ball Bearing Drawer Guides
- \* 12 Volt 55 Amp Converter
- \* 15,000 BTU Air Conditioner
- \* Foam Core Insulated A/C Ducts
- \* Wallpaper Border
- \* Built-In 50,000 BTU Furnace
- \* 6 Gallon Gas DSI Quick Recovery Water Heater with By Pass Kit
- \* Flex Pex Tubing with 10 Year Warranty
- \* 81" Interior Height
- \* 72" inch Slide Room Height
- \* Tub Surround
- \* Porcelain Foot Flush Toilet
- \* Wall Switches for the Lights
- \* RG6 Cable and Satellite Wiring
- \* 36" Deep Slide/Full Depth Slide

- \* Bed Storage w/Struts
- \* Waste Basket Storage
- \* Pre-Drilled & Screwed Residential Cabinetry Throughout
- \* Decorative Window Treatments
- \* Panoramic Dinette Window
- \* Jack Knife Sofa-Standard
- \* 4 1/2" Crowned Roof
- \* Loomed Wiring
- \* Radius Corner Blocks
- \* Radius Storage Doors
- \* Radius Entry Doors

## SAFETY

- \* Safety Chains
- \* Break Away Switch
- \* Electric Brakes
- \* Carbon Monoxide Detector
- \* L.P. Gas Detector
- \* Smoke Detector
- \* Fire Extinguisher
- \* GFI Electrical Outlets
- \* Tinted Safety Glass
- \* Radial Tires

## OPTIONS

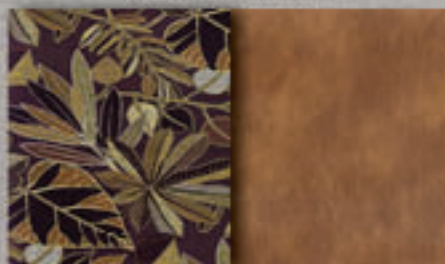
- \* Exterior Shower
- \* Spare Tire and Carrier
- \* Tri-Fold Sleeper Sofa
- \* Rear Ladder
- \* 15,000 BTU Air Conditioner
- \* Two Additional Stabilizer Jacks
- \* Gas/Electric DSI Water Heater
- \* Freestanding Dinette (Select Models)

Standard features and options are subject to change without notice.

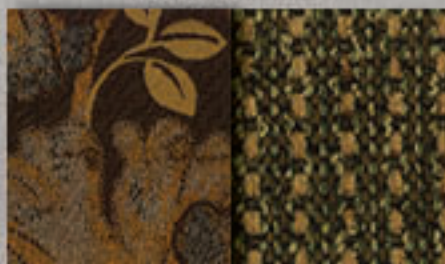
## HIDEOUT LUXURY TRAVEL TRAILER

# DECOR

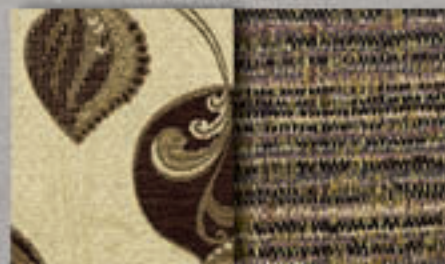
MAPLECREST



WEDGEWOOD



SILVER BIRCH





**HIDEOUT**  
LHS SERIES

## **THE STANDARD IN ULTIMATE VALUE**

HIDEOUT LHS LEADS THE INDUSTRY IN STYLISH COMFORT & CUSTOMER CONVENIENCE ALL WITH SUPERIOR QUALITY AND RELIABILITY. LOADED WITH VALUE & TONS OF STANDARD FEATURES, YOU ARE SURE TO HAVE A FUN FILLED WEEKEND WITH YOUR FRIENDS & FAMILY.



HIDEOUT LHS TRAVEL TRAILERS



(AVAILABLE ON HIDEOUT LHS MODELS 268, 310)



(AVAILABLE ON HIDEOUT LHS MODEL 300)



**HIDEOUT**  
LHS SERIES

## ENJOY UPGRADE FEATURES

WITH A FULL FEATURED INTERIOR KITCHEN WITH RANGE, LARGE OVEN, 7 CU. FT. REFRIGERATOR & PLENTY OF STORAGE, FOR UNCOMPROMISED FAMILY CONVENIENCE. ALSO, BRING THE FUN OUTDOORS WITH MODELS THAT HAVE CONVENIENT OUTDOOR KITCHENS.

# FLOORPLANS

**210LHS**

SHIPPING WEIGHT: 4636 | LENGTH: 26' 5"

**230LHS**

SHIPPING WEIGHT: 4770 | LENGTH: 27' 1"

**260LHS**

SHIPPING WEIGHT: 5158 | LENGTH: 29' 11"

**268LHS**

SHIPPING WEIGHT: 6081 | LENGTH: 29' 4"

**280LHS**

SHIPPING WEIGHT: 6570 | LENGTH: 32' 3"

**290LHS**

SHIPPING WEIGHT: 6905 | LENGTH: 33' 11"

**300LHS**

SHIPPING WEIGHT: TBD | LENGTH: TBD

**310LHS**

SHIPPING WEIGHT: 7673 | LENGTH: 35' 8"

MODEL	210LHS	230LHS	260LHS	268LHS	280LHS	290LHS	300LHS	310LHS
SHIPPING WEIGHT	4636	4770	5158	6081	6570	6905	TBD	7673
CARRYING CAPACITY	2564	2745	2442	1584	3120	2680	TBD	1852
HITCH WEIGHT	600	515	645	665	860	795	TBD	825
EXTERIOR LENGTH*	26' 5"	27' 1"	29' 11"	29' 4"	32' 3"	33' 11"	TBD	35' 8"
EXT HEIGHT	10' 3"	10' 3"	10' 3"	11' 0"	11' 0"	11' 2"	11' 2"	625
FRESH WATER	45	45	45	45	45	45	45	45
WASTE WATER	32	38	32	32	38	38	38	38
GREY WATER	38	38	38	38	70	38	38	38
LPG CAPACITY	40	60	40	40	40	40	60	40

## HIDEOUT LHS SPECIFICATIONS

DISCLAIMER: Product information is as accurate as possible as of the date of publication of this brochure. All features, floor plans, and specifications in this brochure are subject to change without notice. Please also consult Keystone's web site at [www.keystonerv.com](http://www.keystonerv.com) for more current product information and specifications. Tow Vehicle Disclaimer: CAUTION: Owners of Keystone recreational vehicles are solely responsible for the selection and proper use of tow vehicles. All customers should consult with a motor vehicle manufacturer or their dealer concerning the purchase and use of suitable tow vehicles for Keystone products. Keystone disclaims any liability or damages suffered as a result of the selection, operation, use or misuse of a tow vehicle. KEYSTONE'S LIMITED WARRANTY DOES NOT COVER DAMAGE TO THE RECREATIONAL VEHICLE OR THE TOW VEHICLE AS A RESULT OF THE SELECTION, OPERATION, USE OR MISUSE OF THE TOW VEHICLE. \*Length is defined as the distance from the centerline of hitch pin/coupler to rear bumper of trailer. 11.13

# STANDARDS & OPTIONS



## LHS COMFORT PACKAGE

- Electric awning
- Diamond plate
- Exterior and interior speakers
- Outside 110 receptacle
- Porcelain foot flush toilet
- Color enhanced slideouts
- Radius entry doors w/strut
- X-Large baggage doors
- AM/FM CD w/MP3
- Stainless steel appliance
- Radius interior walls
- Radius entertainment centers
- 7 C.U. FT. refrigerator
- Oven
- E-Coated Wheels

## EXTERIOR

- Upgraded graphics package
- Walk on roof
- Ladder backers
- Powder coated I-Beam frame
- Cambered chassis
- Four heavy duty stabilizer jacks
- Easy lube axles
- Full length outriggers
- Dual battery rack
- Two 30 Lb. LP bottles with cover
- Heated and enclosed fresh water tank
- Black radius window frames
- TV antenna with booster
- Radio antenna

- Roof vents
- Cable hook up
- GFI electrical outlets
- Seamless one piece roof
- Radius skirting
- Oversized pass thru storage
- Hose storage in bumper
- .024 Gauge aluminum siding
- R-7 insulation throughout
- Rain gutters with down spouts
- Four stage slide room seals
- Roto-cast seamless holding tanks
- Hurricane straps reinforced framed structure

## INTERIOR

- Central control panel
- Laundry chute
- 2 Interior surround sound speakers
- Ball bearing drawer guides
- 12 Volt 55 amp converter
- 13,500 BTU air conditioner
- Foam core insulated A/C ducts
- 30,000 BTU forced air furnace
- 6 Gallon gas DSI quick recovery water heater with bypass kit
- Flex pex tubing with 10 year warranty
- 81" Interior height
- 72" slide room height
- 36" Full depth slide
- Tub surround
- Wall switches for the lights

- RG6 cable and satellite wiring
- Pre-drilled & screwed residential cabinetry throughout
- Waste basket storage
- Decorative window treatments
- Panoramic dinette window
- Jack knife sofa (standard)
- Mini blinds throughout
- Loomed wiring
- Radius corner blocks
- Radius storage doors

## SAFETY

- Safety chains
- Break away switch
- Electric brakes
- Carbon monoxide detector
- LP gas detector
- Smoke detector
- Fire extinguisher
- GFI electrical outlets
- Tinted safety glass
- Radial tires

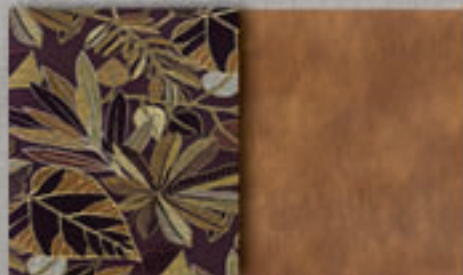
## OPTIONS

- Exterior shower
- Spare tire and carrier
- 15,000 BTU air conditioner
- 6 Gallon gas/electric DSI water heater

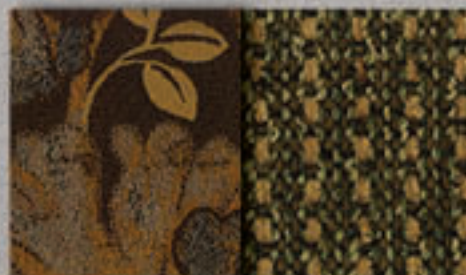
Standard features and options are subject to change without notice.

## HIDEOUT LHS DECOR

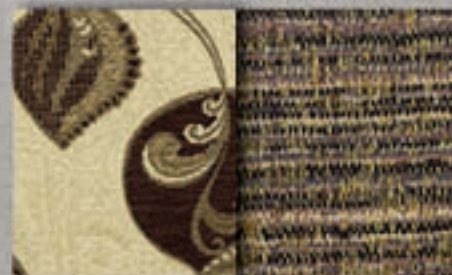
### MAPLECREST



### WEDGEWOOD



### SILVER BIRCH





299RLDS SHOWN IN WEDGEWOOD DECOR



298BHDS KITCHEN  
LARGE KITCHEN COMFORT



299RLDS EMPRESS SHOWER  
LARGE BATH COMFORT

LARGE LIVING COMFORT

**HIDEOUT  
FIFTH WHEELS**

HIDEOUT LUXURY FIFTH WHEELS

## THE STANDARD IN FIFTH WHEEL VALUE

THE BEST VALUE IN THE FIFTH WHEEL MARKET, HIDEOUT LUXURY FIFTH WHEELS OFFER FULLY FEATURED, TOP SELLING FLOORPLANS WITH EXCITING INTERIOR & EXTERIOR APPEAL AT THE BEST SELLING PRICE IN THE INDUSTRY.

2988HDS SHOWN IN WEDGEWOOD DECOR



299RLDS BEDROOM



2988HDS BUNKROOM



282RKS EMPRESS SHOWER

**HIDEOUT**  
FIFTH WHEELS

## UPGRADE INTERIORS

HIDEOUT LUXURY FIFTH WHEELS LEAD THE INDUSTRY IN STYLISH COMFORT & CUSTOMER CONVENIENCE ALL WITH SUPERIOR QUALITY AND RELIABILITY

## BEST IN CLASS EXTERIOR

### NEW EXTERIOR



The exterior boasts a brand new fiberglass front cap coupled with Hideout's patented Hitch Vision. The new colored sidewall with enhanced graphics package is sure to turn heads.

### HITCH VISION



#### HIDEOUT "HITCH VISION"

Hitch Vision moves the dial forward in what customers expect from an RV. There's no looking back!

Hitch Vision gives the fifth wheel user complete confidence to back up and align their truck to Hideout's extended hitch pin using only the built-in mirror for guidance. Automotive LED docking lights allow you to load or unload camping gear day or night. Once you've used Hitch Vision, "there's no looking back" to the inconvenience of turning or straining to see your fifth wheel.

### MAX TURN



Combining focused design and unique product specifications, Max Turn Technology is the leader in optimum turn radius:

Also, Hideout is equipped with a heavy duty extended hitch. Combined - Max Turn Technology makes turning and maneuvering a breeze.

# HIDEOUT

## FIFTH WHEELS

## EXCITING EXTERIOR FEATURES

ENJOY THE HOOK UP CONVENIENCE OF HIDEOUT'S PATENTED HITCH VISION. THE PIECE OF MIND OF HIDEOUT'S MAX TURN FRONT CAP ALLOWS FOR OPTIMUM TURN RADIUS!

282RKS SHOWN IN MAPLECREST DECOR



HIDEOUT LUXURY FIFTH WHEELS

CAMP KITCHEN

(AVAILABLE ON HIDEOUT LUXURY FIFTH WHEEL MODEL 298)



OUTDOOR KITCHEN

(AVAILABLE ON HIDEOUT LUXURY FIFTH WHEEL MODEL 305)



**HIDEOUT**  
FIFTH WHEELS

**INTERIOR AND EXTERIOR  
KITCHEN CONVENIENCE**

# HIDEOUT FIFTH WHEEL LUXURY PACKAGE



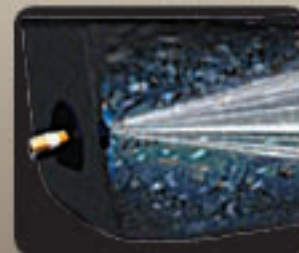
LCI LIGHTED AWNING



32" FLAT PANEL TELEVISION



7 CU. FT. ATWOOD HELIUM REFRIGERATOR  
W/ DECORATIVE REFRIGERATOR INSERT



BLACK TANK FLUSH



UPGRADE GRAPHICS PKG



JENSEN CD/DVD PLAYER



CENTRAL CONTROL PANEL



ALUMINUM WHEELS



KITCHEN COUNTERTOP  
EXTENSION



XL ENTRY ASSIST HANDLE



EXTERIOR TV HOOKUP  
CABLE AND BRACKET



NIGHT SHADES IN  
LIVING ROOM



CROWN MOLDING  
IN LIVING ROOM



BEDROOM CLOSET



30"X60" EMPRESS  
SHOWER (IN MOST MODELS)



FOLDING DINETTE TABLE

## DARE TO COMPARE



COLD MOUNTAIN PACKAGE  
HEATED & ENCLOSED UNDERBELLY



HITCH VISION



PRE-DRILLED AND SCREWED  
WOOD STYLES



OVERSIZED STORAGE DOORS



MAX TURN TECHNOLOGY

# HIDEOUT LUXURY FIFTH WHEEL FLOORPLANS



**270BHS**  
SHIPPING WEIGHT: TBD | LENGTH: TBD



**299RLDS**  
SHIPPING WEIGHT: 8100 | LENGTH: 31' 1"



**282RKS**  
SHIPPING WEIGHT: TBD | LENGTH: TBD



**308BHDS**  
SHIPPING WEIGHT: 9025 | LENGTH: 35' 6"



**298BHDS**  
SHIPPING WEIGHT: 8800 | LENGTH: 34' 11"

## STAY IN TOUCH



Hideout is always just a touch away. You'll find 360 virtual tours, location of your nearest dealer, photos, videos and all of the latest information about Hideout on our easy to navigate website. Everything you need can be accessed anytime, day or night, from home or on the road. You can also find us on the Keystone RV facebook.

[WWW.KEYSTONERV.COM/HIDEOUT](http://WWW.KEYSTONERV.COM/HIDEOUT)

# HIDEOUT LUXURY FIFTH WHEEL

## STANDARDS & OPTIONS

### HIDEOUT FW LUXURY PACKAGE

- » 32" LCD TV w/ Interior & Exterior Mounting Brackets
- » Outside All-weather Stereo Speakers
- » 13.5 BTU Ducted Air Conditioning
- » Stainless Steel Appliances
- » 7 Cu. Ft. Double Door Refrigerator
- » 6 Gallon Gas/Electric DSI Water Heater
- » Exterior Shower
- » Radius Entry Doors w/Integrated Struts
- » Carbon Monoxide Detector
- » Tinted Safety Glass
- » Lighted Electric Awning
- » Radial Tires
- » Extra Large Entry Assist Handle

### PLATINUM PACKAGE

- » Gel Coated MaxTurn Fiberglass Front Cap
- » Hideout Patented Hitch Vision
- » DVD, CD, MP3, AM/FM True Surround Stereo
- » Pleated Shades in Living Area
- » Black Tank Flush

### EXTERIOR

- » Walk on Roof
- » Gel Coated Fiberglass Exterior
- » Electric Adjustable Front Landing Gear
- » Large Pass through Storage w/Bulkhead Divider
- » Powder Coated I-Beam Frame
- » Cambered Chassis

- » Two Heavy Duty Stabilizer Jacks
- » Aluminum Rims
- » Easy Lube Axles
- » Full Length Outriggers
- » Front Battery Compartment Storage
- » Two Enclosed 30lb Bottles
- » Heated and Enclosed Underbelly
- » Fender Skirts
- » Diamond Plate
- » Black Radius Window Frames
- » TV Antenna with Booster
- » Radio Antenna
- » Roof Vents
- » Cable/Satellite Prep
- » GFI Electrical Outlets
- » Seamless One Piece Roof TPO Full Walk On Roof
- » Radius Skirting
- » Full Strutted Storage under Master Bed
- » Hose Storage in the Bumper
- » R-9 Insulation Throughout
- » Rain Gutters with Extended Down Spouts
- » Four Stage Slide Room Seals
- » Roto-Cast Seamless Holding Tank

### INTERIOR

- » 13,500 BTU Air Conditioner
- » True Sound Entertainment System with AM/FM, CD, DVD, MP3 Jack

- » Foam Core Insulated A/C Ducts
- » Wallpaper Border
- » 72" Slide Ceiling Height
- » 30,000 BTU Furnace
- » Heater with By-Pass Kit
- » Flex Pex Tubing with 10 Year Warranty
- » Ball Bearing Drawer Guides
- » Wall Switches for the Lights
- » RG6 Cable and Satellite Wiring
- » Sculptured Valances with Lambrequins
- » Panoramic Dinette Window
- » Deep Slide Room Cabinets
- » Shirt Closets
- » Tri-Fold Sleeper Sofa

### BEDROOM

- » TV Hook Up
- » Bedspread-Master Bedroom
- » Bed Storage with Struts
- » Cabinets Above Queen Bed
- » Reading Light

### BATH

- » Porcelain Foot-Flush Toilet
- » Tub Surround
- » Shower Exhaust Fan
- » Large Medicine Cabinet
- » Robe and Towel Hooks
- » 30"x90" Empress Shower (Most Models)

### KITCHEN

- » 12 Volt SHURflo® Water Pump
- » Deep Drawer Storage
- » Silverware Drawer Divider
- » Heavy Duty Ball Bearing Drawer Glides
- » Integrated Central Control Panel
- » Range with Hi-Output Burner
- » Exhaust Fan with Light
- » Microwave
- » Reversible Dinette Cushions
- » Large Residential Kitchen Sink
- » High Rise Kitchen Faucet
- » Sink Cover
- » Waste Basket Storage
- » Pre-Drilled & Screwed Wood Core Cabinetry Throughout
- » Mortise and Tenon Hardwood Joints
- » Overhead Cabinets Above the Sink
- » Counter Top Extensions

### OPTIONS

- » Spare Tire Carrier/Cover
- » Exterior Ladder
- » Free Standing Dinette
- » 13,000 BTU Air Conditioner

Standard features and options are subject to change without notice.

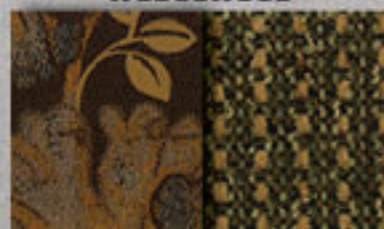
## HIDEOUT LUXURY FIFTH WHEEL SPECIFICATIONS & DECOR

MODEL	270BHS	282RKS	298BHS	299RLDS	308BHS
SHIPPING WEIGHT	TBD	TBD	8800	8100	9025
CARRYING CAPACITY	TBD	TBD	1845	2220	1695
HITCH WEIGHT	TBD	TBD	1845	1520	1920
EXTERIOR LENGTH*	TBD	TBD	34' 11"	31' 1"	35' 6"
EXT HEIGHT	TBD	TBD	11' 9"	11' 9"	11' 9"
FRESH WATER	TBD	TBD	45	45	45
WASTE WATER	TBD	TBD	38	38	76
GREY WATER	TBD	TBD	64	38	38
LPG CAPACITY	TBD	TBD	60	60	60

MAPLECREST



WEDGEWOOD



SILVER BIRCH



DISCLAIMER: Product information is as accurate as possible as of the date of publication of this brochure. All features, floor plans, and specifications in this brochure are subject to change without notice. Please also consult Keystone's web site at [www.keystonev.com](http://www.keystonev.com) for more current product information and specifications. **Tow Vehicle Disclaimer:** CAUTION: Owners of Keystone recreational vehicles are solely responsible for the selection and proper use of tow vehicles. All customers should consult with a motor vehicle manufacturer or their dealer concerning the purchase and use of suitable tow vehicles for Keystone products. Keystone disclaims any liability or damages suffered as a result of the selection, operation, use or misuse of a tow vehicle. **KEYSTONE'S LIMITED WARRANTY DOES NOT COVER DAMAGE TO THE RECREATIONAL VEHICLE OR THE TOW VEHICLE AS A RESULT OF THE SELECTION, OPERATION, USE OR MISUSE OF THE TOW VEHICLE.** \*Length is defined as the distance from the centerline of hitch pin/coupler to rear bumper of trailer. 11.13

# HIDEOUT TRAVEL TRAILERS

# HIDEOUT LHS SERIES

# HIDEOUT FIFTH WHEELS



HIDEOUT BRANDS ARE A PROUD RECIPIENT OF THE 2013  
DEALER SATISFACTION QUALITY CIRCLE AWARD

RIGHT FEATURES. RIGHT PRICE. RIGHT NOW. | [WWW.KEYSTONERV.COM/HIDEOUT](http://WWW.KEYSTONERV.COM/HIDEOUT)

YOUR LOCAL DEALER IS:



NOVEMBER 2013



**Keystone RV  
Company**

[WWW.KEYSTONERV.COM](http://WWW.KEYSTONERV.COM)  
574.535.2100 • 2642 HACKBERRY DRIVE  
P.O. BOX 2000 • GOSHEN, IN 46527



Go RVing.



CONNECT WITH KEYSTONE RV AND STAY UP TO  
DATE WITH PRODUCT NEWS AND INFORMATION

VISIT OUR WEBSITE TO VIEW INTERIOR PHOTOS,  
360 VIRTUAL TOURS AND MUCH MORE.

