

EXPECT MORE AND SACRIFICE NOTHING

Cougar *by Keystone* Xlite



EASTERN EDITION

XLite



November 2012



2642 Hackberry Drive
PO Box 2000
Goshen, IN 46527-2000
(574) 535-2100



Product information is as accurate as possible as of the date of publication of this brochure. Features, floor plans, and specifications are subject to change without notice. Please also consult Keystone's web site at www.keystonerv.com for more current product information and specifications. Tow Vehicle Disclaimer. CAUTION: Owners of Keystone recreational vehicles are solely responsible for the selection and proper use of tow vehicles. All customers should consult with a motor vehicle manufacturer or their dealer concerning the purchase and use of suitable tow vehicles for Keystone products. Keystone disclaims any liability or damages suffered as a result of the selection, operation, use or misuse of a tow vehicle. KEYSTONE'S LIMITED WARRANTY DOES NOT COVER DAMAGE TO THE RECREATIONAL VEHICLE OR THE TOW VEHICLE AS A RESULT OF THE SELECTION, OPERATION, USE OR MISUSE OF THE TOW VEHICLE. 11/2012

www.keystonerv.com/cougar-xmlite

YOUR LOCAL DEALER:



Get the free app at <http://gettag.mobi> and scan this tag.

Lite TRAVEL TRAILERS



28RBS X-LITE TT

COUGAR X-LITE TRAVEL TRAILERS HAVE SET A NEW STANDARD FOR LIGHTWEIGHT.

TOP RIGHT: The Cougar X-Lite 28RBS can accommodate any size family, with unmatched interior/external storage and sleeps up to 10.

BOTTOM RIGHT: Enjoy panoramic views in the ultimate rear living model; the Cougar X-Lite 32SAB boasts interior living space with optimum kitchen, linen and wardrobe storage.



32SAB X-LITE TT

Best in Class Appointments

FIFTH WHEELS



25RKS X-LITE FW



28RDB X-LITE FW



WHEN WE SAY YOU WON'T HAVE TO SACRIFICE ANYTHING, WE MEAN IT.

- ① Oversized windows throughout
- ② 32" LCD TV
- ③ Full-sized pantry
- ④ Raised panel hand rubbed glazed maple cabinet doors and drawers
- ⑤ Residential raised panel refrigerator front
- ⑥ Countertop extension
- ⑦ Residential finished interior doors
- ⑧ Snap jacks (FW only)
- ⑨ Hitch Vision (FW only)
- ⑩ Outside security light
- ⑪ Max Turn Technology Fiberglass Front Cap
- ⑫ Slam Baggage Doors



Expect More and Sacrifice Nothing

EXPECT MORE & SACRIFICE NOTHING!

Every X-Lite is standard with features that are usually reserved for units costing thousands more.

- Vaulted Ceiling
- Fiberglass Front Cap
- Quick Recovery Water Heaters
- Porcelain Foot Flush Toilet
- Enclosed and Heated Underbelly
- Air Mattress Sofa



Cougar has earned the DSI award an unprecedented 6 years in a row!

THE DSI (DEALER SATISFACTION INDEX) AWARD RATES THE LEVEL OF SATISFACTION THE DEALERS HAVE IN A MANUFACTURER. IT RATES MANUFACTURERS IN MANY AREAS SUCH AS: PRODUCT DESIGN, PRODUCT RELIABILITY & QUALITY, WARRANTY SUPPORT, AND PARTS SUPPORT.



POLAR PACKAGE:

The Cougar X-Lite Polar Package expands your camping season with an enclosed and heated underbelly. Not only will you have improved aerodynamics, but your valves, tanks and water lines are all protected.

We also add upgraded insulation to our slide-out floors to control the hot and cold exchange.

X-LITE
PATENTED
FRONT CAP



X-Lite's stylish aerodynamic patented front cap offers both style and convenience with E-Z access LP, battery control and LED docking lights.



Full depth drawer guides create smooth accessibility to your utensil tray.



Setting up and taking down your awning is easier than ever with the all new Cougar adjustable electric awning.

Cougar X-Lite has Set the Standard

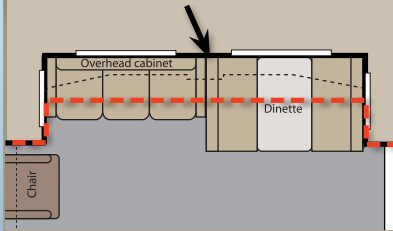
OUTDOOR COOK CENTER



Cougar X-Lite takes good ideas to the next level. The Cougar 29RBK features a full service outside kitchen which includes a refrigerator, stove top, sink and extendable countertop all without sacrificing valuable sleep space.

You'll appreciate the extra livability of X-Lite's larger slide rooms.

X-Lite's 38" deep slide room



Unlike most lightweight travel trailers, Cougar X-Lites have full depth 38" slide-outs.

X-LITE VAULTED CEILING



The upgraded look and feel of X-Lite travel trailers vaulted ceiling provides more head room with extended ceiling heights without effecting overall unit height as shown in the 32SAB.

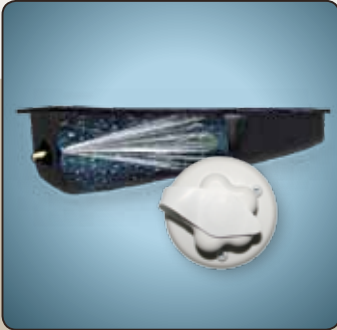


Exclusive to Cougar X-Lite, the Comfort Camp I mattress is crafted with a residential look and feel, is double quilted and has double the support of the industry standard mattresses.

X-Lite



Coupled with a conveniently located LP quick connect, X-Lite offers an optional BBQ grill to make campsite cooking quick and easy (most models).



Cougar X-Lite comes outfitted with a black tank flush hook-up. This feature keeps the black tank clean and trouble free.



MOR/ryde Suspension comes standard on all Cougar X-Lite fifth wheels and travel trailers.



Adding safety as you enter and exit the Cougar, the step light is located directly below the entry door



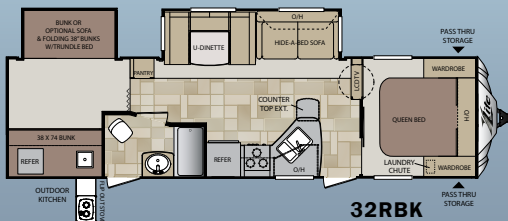
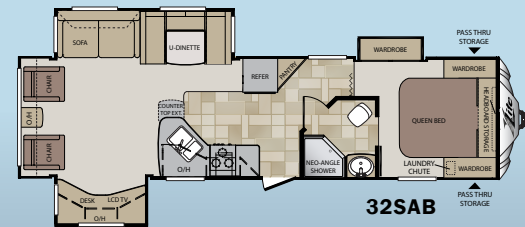
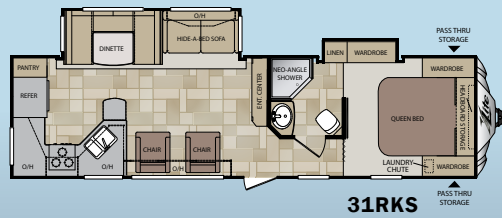
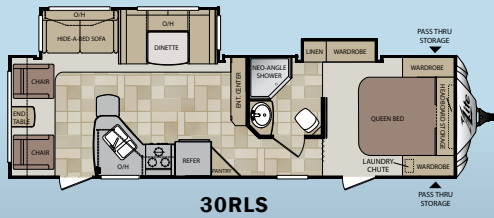
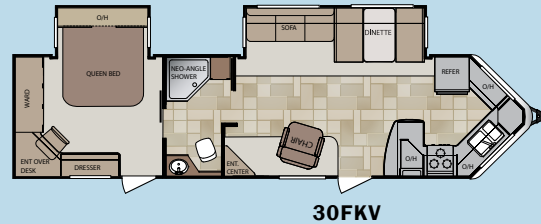
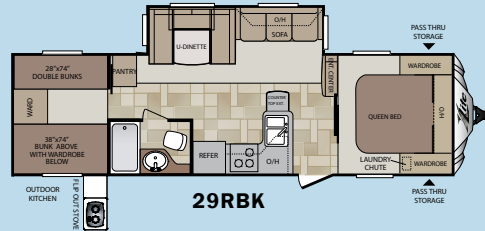
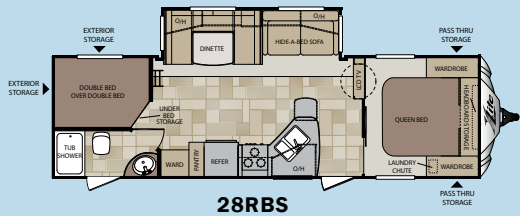
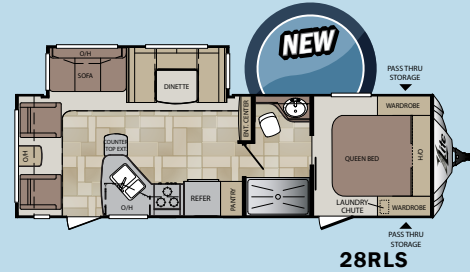
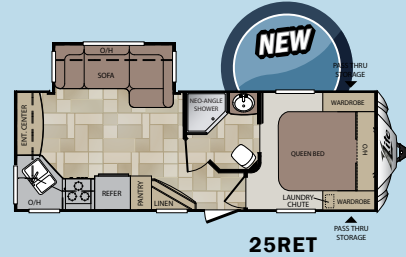
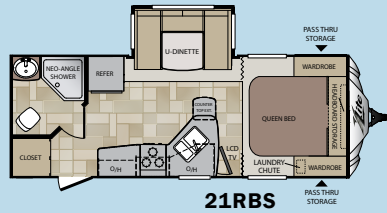
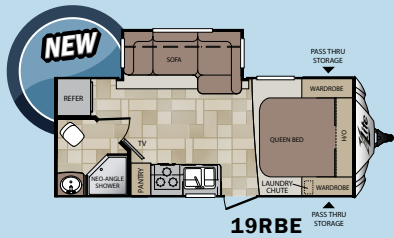
The multi-functional pop-up dinette table offers ease of use both inside and outside.



The battery disconnect is conveniently located in the lighted pass through storage.

When it Comes to Cougar X-Lite: BIGGER IS BETTER

Lite TRAVEL TRAILERS



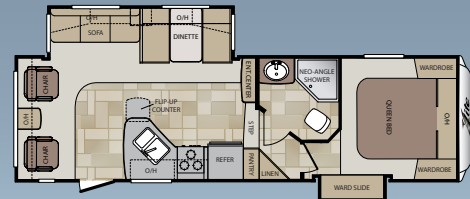
Cougar X-Lite Travel Trailers



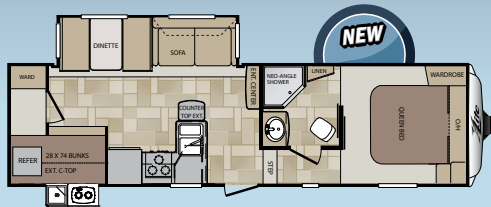
FIFTH WHEELS



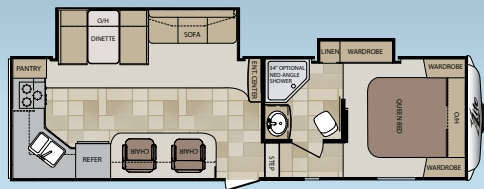
25RKS



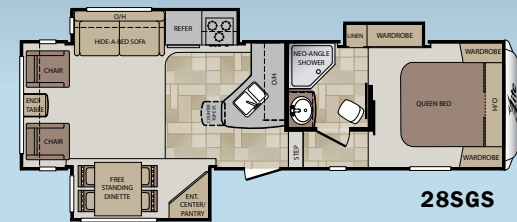
26SAB



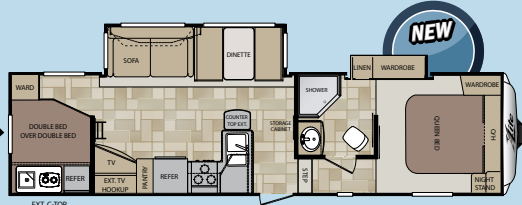
27BHS



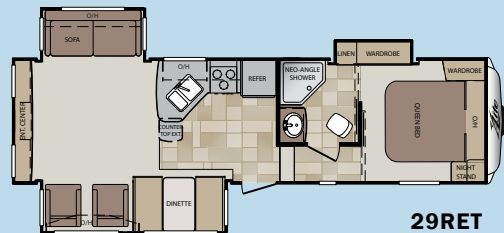
27RKS



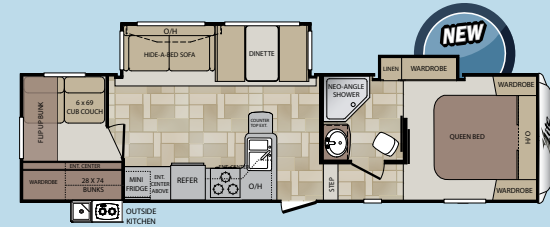
28SGS



28RDB



29RET



29RBS

TRAVEL TRAILERS

FIFTH WHEELS

MODEL	19RBE	21RBS	25RET	28RLS	28RBS	29RBK	30FKV	30RLS	31RKS	31SQB	32SAB	32RBK	32RET	25RKS	26SAB	27RKS	27BHS	28SGS	29RET	28RDB	29RBS
SHIPPING WEIGHT	TBD	5907	5770	6085	6392	6566	7130	6860	6990	7360	7180	7385	7245	6370	6964	7000	7000	7574	7505	7660	7590
CARRYING CAPACITY	TBD	1293	1430	1715	1808	1634	1070	1340	2010	1640	1820	1615	1755	3555	3026	3000	3000	2426	2495	2340	2410
HITCH WEIGHT	TBD	680	625	780	955	835	860	780	940	935	715	735	785	1125	1190	1230	1110	1410	1260	1415	1405
EXTERIOR LENGTH	TBD	29' 4"	28' 0"	31' 0"	32' 2"	33' 0"	33' 11"	33' 5"	34' 9"	35' 11"	35' 6"	35' 0"	35' 6"	27' 2"	29' 4"	30' 5"	30' 10"	30' 10"	31' 1"	32' 11"	32' 11"
EXTERIOR WIDTH	TBD	8'	8'	8'	8'	8'	8'	8'	8'	8'	8'	8'	8'	8'	8'	8'	8'	8'	8'	8'	8'
EXT. HEIGHT - A/ C TOP	TBD	11' 4"	11' 4"	11' 4"	11' 4"	11' 4"	11' 4"	11' 4"	11' 4"	11' 4"	11' 4"	11' 4"	11' 4"	11' 11"	11' 11"	11' 11"	11' 11"	11' 11"	11' 11"	11' 11"	11' 11"
FRESH WATER (GAL.)	TBD	43	43	43	43	43	43	43	43	43	43	43	43	43	43	43	43	43	43	43	43
WASTE WATER (GAL.)	TBD	28	28	28	28	28	28	28	28	28	28	28	28	28	28	28	28	28	28	28	28
GRAY WATER (GAL.)	TBD	56	56	56	56	28	56	56	56	56	56	56	56	56	56	56	56	56	56	56	56
LP CAPACITY (LBS.)	TBD	60	60	60	60	60	40	60	60	60	60	60	60	60	60	60	60	60	60	60	60
AWNING LENGTH	TBD	16'	17'	20'	19'	17'	19'	19'	19'	19'	15'	18'	12'	13'	12'	16'	16'	10'	10'	19'	16'

Cougar X-Lite Fifth Wheels



MAX TURN

Combining focused design and unique product specifications, Max Turn Technology is the leader in optimum turn radius:

Unlike the competition, Cougar uses continuous contoured tubular steel for optimum strength and support behind the engineered tapered fiberglass front cap.

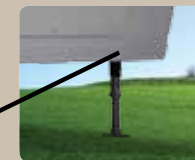
Also, Cougar is equipped with a heavy duty extended hitch. Combined - Max Turn Technology makes turning and maneuvering a breeze.



CONTROL EVERYTHING WITH THE COUGAR E-Z CAMP REMOTE



Docking Light



Landing Gear



Electric Slide Out



High Emittance
LED Flashlight



Electric Awning



COUGAR "HITCH VISION"

Hitch Vision moves the dial forward in what customers expect from an RV. There's no looking back!

Hitch Vision gives the fifth wheel user complete confidence to back up and align their truck to Cougar's extended hitch pin using only the built-in mirror for guidance. Automotive LED docking lights, which can be controlled by the E-Z Camp Cougar Remote, allow you to load or unload camping gear day or night. (Hitch Vision also comes in handy when using the E-Z Camp Cougar Remote to raise and lower landing gear.)

Once you've used Hitch Vision, "there's no looking back" to the inconvenience of turning or straining to see your fifth wheel.

X-Lite Fifth Wheel Convenience

X-LITE STANDARDS, OPTIONS AND DECORS

CAMPING-IN-STYLE PACKAGE*

- Pleated shades throughout
- Laundry chute (most models TT only)
- Black trim safety glass windows
- Microwave oven with turn style
- Aluminum framed sidewalls, floors, front, rear and slide rooms
- 5" Fabricated stamped steel roof trusses
- 13,500 BTU air conditioner
- Raised panel upper & lower cabinet doors throughout
- XL Folding grab handle

VALUE PACKAGE*

- True home CD/DVD system with speakers and separate zones (12 Volt compatible), MP3 player hookup on stereo
- All weather outside speakers
- Gas/electric water heater with quick recovery
- Residential shower/tub surround

- TV antenna
- Laminated fiberglass sidewalls
- 32" LCD TV

CONVENIENCE PACKAGE*

- Patented front cap with docking lights
- Bowed roof rafters (vaulted ceiling- TT only)
- Outside shower
- Residential raised panel refrigerator front
- Spare Tire
- MOR/ryde suspension
- Slam baggage doors (N/A on XV TT)
- Pop-up dinette table (TT only)
- Step light
- Battery disconnect

X-LITE PACKAGE*

- Black tank flush
- Electric awning
- Radial tires
- Carbon monoxide detector

MANDATORY OPTIONS*

- Polar package
- Cougar camp remote (FW only)

X-LITE OPTIONS

- Multi-function sleeper sofa with storage
- "Smart Slide" free-standing dinette
- 15,000 BTU ducted A/C
- Aluminum wheels
- Bumper mount RVQ grill (most models)
- Two swivel rockers in place of sofa (25RKS only)

DRY CAMPING FEATURES

- 12 Volt stereo
- Large fresh, gray and black tanks (all models)
- All slide-out lights are 12 Volt

- Space for dual batteries
- Entire underbelly enclosed to keep debris off tanks, water lines, etc.
- Fully enclosed and heated dump valves

SAFETY FEATURES

- Manual backup on all main slide-outs
- LP sensor
- Smoke detector
- Fire extinguisher
- Carbon monoxide detector

XLITE NOTABLE FEATURES

- Executive chef kitchen (most models)
- Hand glazed maple raised panel cabinet doors throughout
- Oversized pots and pans drawer (most models)
- 100% larger pantry than competitors

- Deep oversized kitchen basin with sink cover
- Residential full-extension - steel ball bearings drawer guides
- Residential porcelain toilet with foot pedal
- E-Z lube hubs on axles (all models)
- 30,000 BTU furnace
- One-piece seamless rubber roof
- All windows in main slide-out open
- Swivel rocker(s) (28RLS-2, 29RET-2, 30RLS-2, 30FKV-1, 31RKS-2, 32SAB-2, 26SAB-2, 27RKS-2, 28SGS-2)
- Cable/satellite prep
- 32" LCD TV (N/A on 21RBS)
- Cougar camp remote (FW only)

*Mandatory option



DARE TO COMPARE

- Highest trade-in and resale value in the industry on average
- Enclosed, underbelly with heated and enclosed dump valves

- 16.2 Gallons per hour - quick recovery water heater (great for bunkhouses)
- Slide-out seal is mounted in a "T" track (no sticky tape to hold slide seals on)
- Cougar executive chef kitchen (see Cougar Standards for details)

- Easy access laundry chute (most models)
- Porcelain foot flush toilets
- Pleated shades standard on all models
- Five side welded aluminum super structure
- 5" Fabricated stamped steel-truss roof rafters on 16" centers
- Bowed roof rafters (vaulted ceiling)
- Best in class electric awning

- Battery disconnect switch
- Exclusive MOR/ryde upgraded suspension
- Patented front cap with docking lights
- R-7 sidewall insulation, R-14 floor and ceiling insulation and R-15 astro-foil in the slide-out
- Fully ducted air conditioning featuring triple insulated, foil-wrapped, light-weight ducts
- 12 Volt compatible for dry camping

Discover Which Options are Right for You