

2011

# Jay Flight

TRAVEL AND PARK TRAILERS BY JAYCO



JAY FLIGHT

JAY FLIGHT G2

JAY FLIGHT  
BUNGALOW



AMERICA'S MOST LIVEABLE RVs.



## TRUE VALUE OF OWNERSHIP

With Jayco, you get more amenities, more liveable, home-like features and superior construction for better durability and greater resale value. **Simply put, you won't find another RV packed with more TRUE VALUE — from the time of purchase to the time you sell.**

- + 2-year warranty
- + more standard features
- + more brand-name components
- + less maintenance
- + better resale value

### True Value of Jayco Ownership

Learn more about Jayco's True Value by finding the blue arrows  throughout this brochure.



AMERICA'S MOST LIVEABLE RVs.



### CERTIFIED GREEN

All Jayco products are green certified by TRA Certification Inc., an independent, third-party certification agency. Jay Flight earned gold certification through the use of sustainable materials, environmentally-friendly production methods, energy-efficient components and reduction of waste.



WE BACK OUR PRODUCTS FOR 2 YEARS. ASK OUR COMPETITION WHY THEY DON'T.

You want your RV to last a long time. And nobody backs their RVs better than we do. Our exclusive two-year Co-Pilot Warranty is the best in the business and provides assurance that you'll enjoy your purchase for many years.



# America's #1 travel trailer.

At Jayco, we believe family should always come first, whether it's just the two of you or a house full of kids and all their friends. That's why we make our Jay Flight line of travel and park trailers as family friendly as possible, with more standard high-end features than any other RV in its class. And that's why Jay Flight continues to be the top-selling travel trailer in the country.



## ↑ COZY TOUCHES

Residential-style furniture, stunning cherry cabinets and nickel hardware add to Jay Flight's home-like atmosphere.



## ↑ DURABLE CONSTRUCTION

With its I-Class structural steel chassis frame, one-piece rubber roof and longitudinal floor joists on 16"-18" centers, Jay Flight is as durable as it is beautiful, while a new front profile for the 2011 Jay Flight and G2 improves its aerodynamics.

## ↑ COMFORT & CONVENIENCE

With an optional thermal package and Jayco's innovative 75-plus gallon fresh water system (n/a Bungalow), featuring a water heater bypass and durable Pex water lines, you'll find comfort in your Jay Flight.



Jay Flight®

TRAVEL AND PARK TRAILERS BY JAYCO®

# Jay Flight



## FAMILY FIRST

Spacious slideouts for extra room, comfortable furniture for relaxation, well-planned living spaces for comfort and a residential-style kitchen for convenience make the Jay Flight friendly and affordable for families of all sizes.



## COZY

Jay Flight's sleeping area features a queen innerspring mattress, privacy curtains and ample storage, making it a charming retreat.

## CONVENIENT

Enjoy home-cooked meals wherever you go in Jay Flight's contemporary, well-designed kitchen, complete with 3-burner range, microwave oven and residential-style sink.



JAY FLIGHT 22FB | DRIFTWOOD



JAY FLIGHT 29QBH | WHEAT

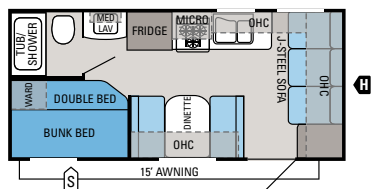


JAY FLIGHT 22FB | DRIFTWOOD



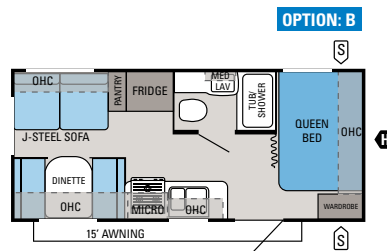
JAY FLIGHT 29QBH | WHEAT

# Jay Flight | FLOORPLANS



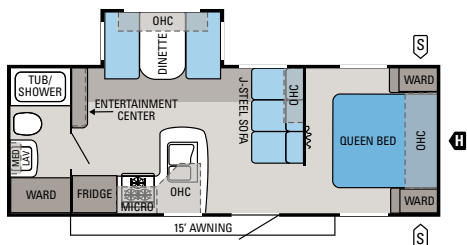
## JAY FLIGHT | 19BH

Ext. Length: 22' 5" Ext. Height: 128" Unloaded Weight (lbs.): 3,935



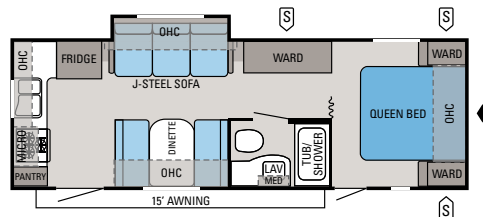
## NEW JAY FLIGHT | 19RD

Ext. Length: 23' 1" Ext. Height: 127" Unloaded Weight (lbs.): 4,140



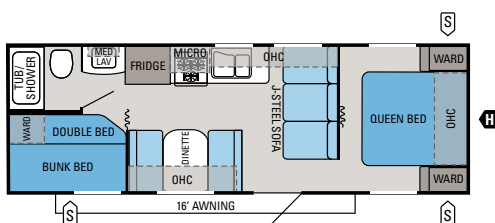
## JAY FLIGHT | 24FBS

Ext. Length: 26' 11" Ext. Height: 134" Unloaded Weight (lbs.): 5,200



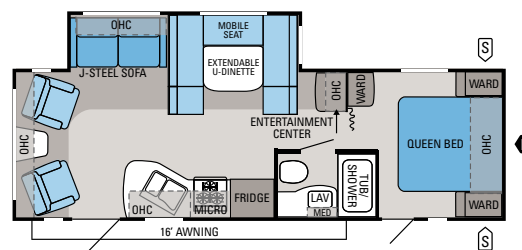
## JAY FLIGHT | 24RKS

Ext. Length: 28' 3" Ext. Height: 127" Unloaded Weight (lbs.): 5,035



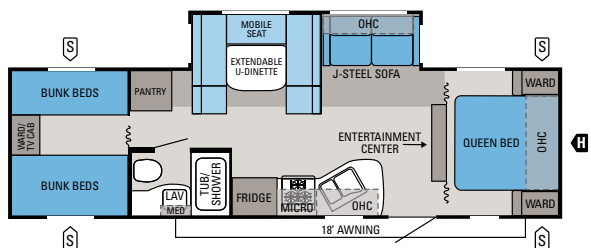
## JAY FLIGHT | 26BH

Ext. Length: 29' 1" Ext. Height: 127" Unloaded Weight (lbs.): 4,725



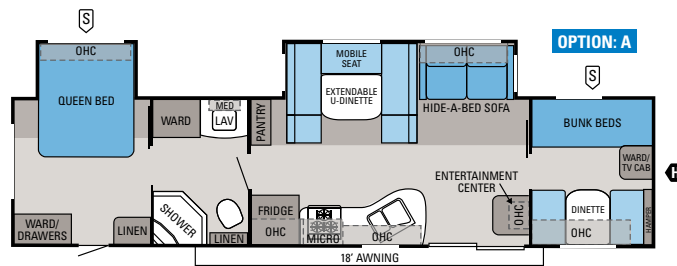
## JAY FLIGHT | 26RLS

Ext. Length: 29' 11" Ext. Height: 134" Unloaded Weight (lbs.): 6,210



## JAY FLIGHT | 29QBH

Ext. Length: 33' 3" Ext. Height: 134" Unloaded Weight (lbs.): 6,630



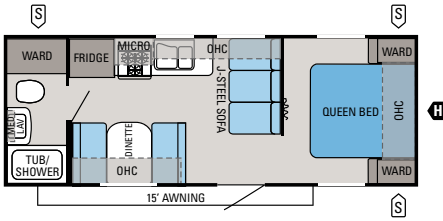
## NEW JAY FLIGHT | 36BHDS

Ext. Length: 37' 11" Ext. Height: 134" Unloaded Weight (lbs.): 8,075

# Jay Flight | SPECIFICATIONS

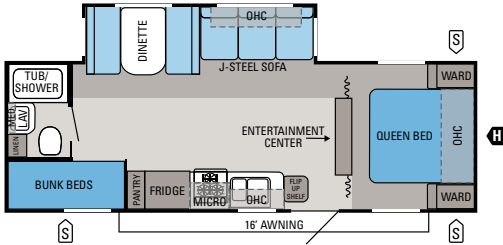
FLOORPLAN	EXTERIOR LENGTH	EXTERIOR HEIGHT (WITH A/C)	INTERIOR HEIGHT	UNLOADED VEHICLE WEIGHT (LBS.)	DRY HITCH WEIGHT (LBS.)	GROSS VEHICLE WEIGHT RATING (LBS.)	CARGO CARRYING CAPACITY (LBS.)	FRESH WATER CAPACITY (GAL.) (WITH WATER HEATER)	GRAY WASTEWATER CAPACITY (GAL.)	TOILET/BLACK WASTEWATER CAPACITY (GAL.)
19BH	22' 5"	128"	81"	3,935	520	6,000	2,065	90	32.5	32.5
19RD	23' 1"	127"	81"	4,140	525	6,200	2,060	90	32.5	32.5
22FB	26' 5"	127"	81"	4,360	565	6,500	2,140	90	32.5	32.5
24FBS	26' 11"	134"	81"	5,200	660	7,500	2,300	86	32.5	32.5
24RKS	28' 3"	127"	81"	5,035	625	7,000	1,965	92	32.5	32.5
25BHS	28' 11"	134"	81"	6,020	785	8,180	2,160	86	32.5	32.5
26BH	29' 1"	127"	81"	4,725	595	7,500	2,775	90	32.5	32.5
26RLS	29' 11"	134"	81"	6,210	805	8,300	2,090	86	32.5	32.5
28BHS	30' 6"	127"	81"	5,305	690	7,500	2,195	90	32.5	32.5
29QBH	33' 3"	134"	81"	6,630	920	9,250	2,620	86	32.5	32.5
36BHDS	37' 11"	134"	81"	8,075	935	10,200	2,125	90	32.5	32.5

# Jay Flight | STANDARDS AND OPTIONS



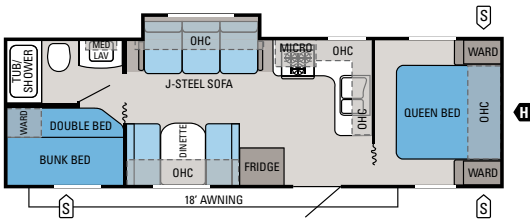
## JAY FLIGHT | 22FB

Ext. Length: 26' 5" Ext. Height: 127" Unloaded Weight (lbs.): 4,360



## JAY FLIGHT | 25BHS

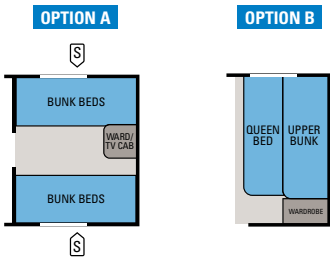
Ext. Length: 28' 11" Ext. Height: 134" Unloaded Weight (lbs.): 6,020



## JAY FLIGHT | 28BHS

Ext. Length: 30' 6" Ext. Height: 127" Unloaded Weight (lbs.): 5,305

## FLOORPLAN OPTIONS



- S** OUTSIDE STORAGE
- H** TRAILER HITCH
- LAV** BATHROOM SINK
- MICRO** MICROWAVE
- OHC** OVERHEAD CABINETS
- FRIDGE** REFRIGERATOR
- WARD** WARDROBE

### STANDARD BATHROOM EQUIPMENT

- Bar and towel ring
- +** Bathroom exhaust fan
- Large sink in bathroom
- Marine toilet with foot flush
- Medicine cabinet with mirror
- Shower curtain with curved shower track (select models)
- Toilet paper holder
- Vinyl flooring

### STANDARD BEDROOM EQUIPMENT

- +** 312-coil innerspring mattress with 1" padding
- Privacy curtain (select models)
- Quilted bedspread (select models)
- +** Shirt wardrobe in bedroom
- +** Under-bed storage, bed lifts easily on gas struts (select models)

### STANDARD KITCHEN EQUIPMENT

- 3-burner range with 9,000-BTU SuperBurner
- Access doors to the dinette booth
- Extra large picture window at dinette
- Large pedestal dinette table
- +** Mixing high-rise faucet with brass connectors
- +** Offset double-bowl kitchen sink
- +** Range hood with light and exhaust fan
- Spice rack, built-in under kitchen sink (select models)

### STANDARD CONSTRUCTION FEATURES

- .024" aluminum exterior skin
- +** 1/2" plywood dinette, bed and bunk platforms
- +** 5/8" tongue-and-groove plywood main floor decking
- 2" x 3" longitudinal floor joists on 16"-18" centers
- 81" living room ceiling height
- +** Electric-powered slideout (all slideout models)
- +** Fully decked roof with 3/8" plywood
- +** I-Class cambered structural steel I-beam frame
- One-piece seamless rubber roof material
- Poly Flex one-piece underbelly covering
- R-7 fiberglass insulation in sidewall, roof and floor
- Roof rafters, constructed of residential-style tapered 4-1/2" trusses
- Wall studs on 16" centers

### STANDARD EXTERIOR EQUIPMENT

- 15" radial tires
- 60" patio door (36BHDS)
- +** Aerodynamic front profile
- Amber patio light with inside switch
- Lockable baggage doors with radius corners
- +** Big Easy entrance step with 10" deep treads (select models)
- Bumper with drain hose carrier and end caps
- Combined cable and satellite hookup
- Durable fender skirts
- E-Z Lube axles
- +** Exterior speakers, high-output marine-grade (2)
- +** Galvanized-steel wheel wells (insulated on non-slide models)
- Molded rain gutters with extended drip spouts
- Painted bottom radius skirting
- +** Radius-cornered 30" fiberglass main entrance door with screen door
- Stabilizer jacks (2 pairs)
- +** Torq-N-Go wheel nuts
- White plastic grab handle

### STANDARD INTERIOR EQUIPMENT

- +** Ball bearing drawer guides 50-lb. capacity with full-drawer extension
- Cable and satellite TV prepped with RG6 coax cabling
- +** Concord Cherry doors and drawers
- +** Crank-up digital TV antenna with signal booster
- +** J-Steel convertible sofa
- Marine-grade table leg and pedestal base
- Overhead cabinetry in slideout room above sofa
- +** Pleated night shades
- +** Residential furniture, designed and made by Jayco
- Roof-mounted antenna for radio

### STANDARD HEAT, POWER & WATER EQUIPMENT

- +** 6-gal. gas/electric auto-ignition water heater
- 10-gal. gas/electric auto-ignition water heater (36BHDS)
- 12V demand water pump
- 12V electrical system with deluxe 120V, 45-amp power converter
- 30-amp power cord
- 120V G.F.C.I. protected exterior receptacle
- +** ABS holding tanks
- +** Auto-ignition furnace with wall thermostat
- Double 30-lb. propane gas bottles with regulator
- Hookup for city water
- In-floor ducted heat
- Systems monitor panel
- Water system winterization kit
- +** WaterWorks System

### STANDARD SAFETY EQUIPMENT

- Breakaway switch
- Deadbolt lock on entrance door
- Dual hitch safety chains
- Egress window
- Fire extinguisher
- Propane/carbon monoxide alarm
- Safety-glass windows
- Smoke alarm

### OPTIONS

- Customer Value Package
- Customer Value Package with 15,000-BTU A/C
- Electric stabilizer jacks
- Electric tongue jack
- Front diamond plate
- +** Quad bunk in lieu of bunk/dinette (36BHDS)
- Queen bed with bunk (19RD)
- Spare tire and tire carrier
- Thermal Package

### CUSTOMER VALUE PACKAGE

- +** 13,500 or 15,000-BTU A/C with wall thermostat with louvered-directional ceiling vents
- +** ABS tub surround
- +** Carefree patio awning
- +** Double 30-lb. propane gas bottles with regulator
- +** Microwave oven with carousel
- +** Multi-Media Sound System AM/FM/CD stereo with MP3 input jack
- +** Outside shower
- +** Oversized oven
- +** Raised-panel arched kitchen overhead cabinet doors
- +** Tub/shower skylight
- +** Water heater bypass system

# Jay Flight G2



## BUILT FOR LIVEABILITY

Featuring more standard amenities than any other RV in its class, the Jay Flight G2 is built to be your home away from home. With a contemporary, well-equipped kitchen, generous living areas and a cozy bedroom, it's perfect for weekend getaways or extended vacations.



JAY FLIGHT G2 32BHDS | SIENNA



## EFFICIENT

Mealtime is quick and easy when you're cooking in the G2's home-like kitchen, with modern appliances and ample cabinets. Plus, with an outdoor kitchen (select models), you can enjoy the great outdoors even more.

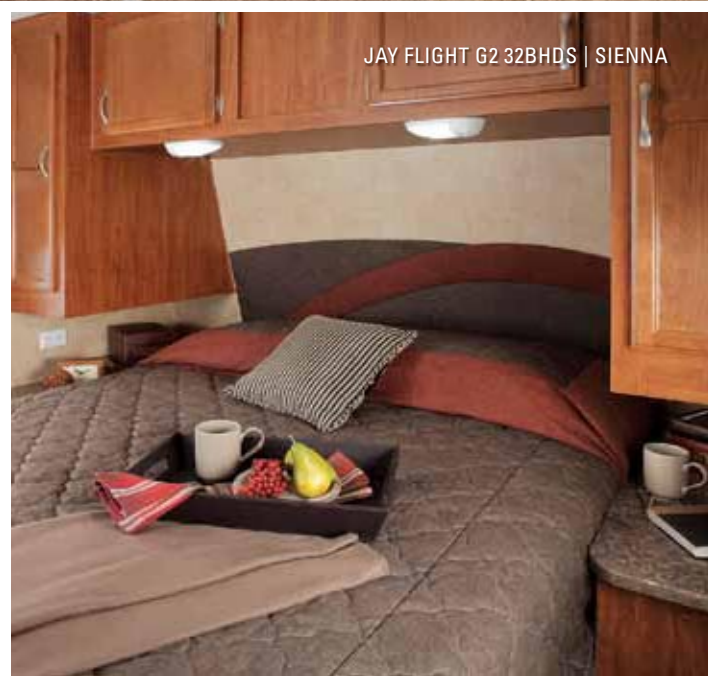
## RELAXING

From a queen-sized 312-coil innerspring mattress to a separate bunk room, complete with a TV and wardrobe cabinet (select models), there's plenty of room to spread out and relax.





JAY FLIGHT G2 32BHDS | SIENNA



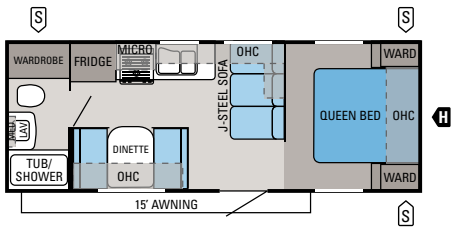
JAY FLIGHT G2 32BHDS | SIENNA



JAY FLIGHT G2 32BHDS | SIENNA

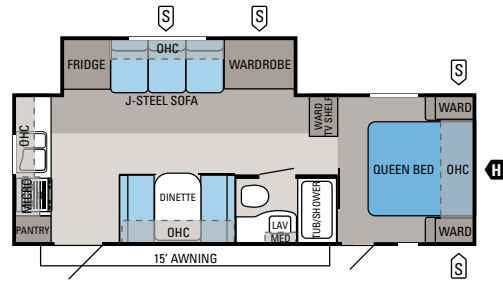
# Jay Flight G2 | FLOORPLANS

S OUTSIDE STORAGE    LAV BATHROOM SINK    OHC OVERHEAD CABINETS    WARD WARDROBE  
H TRAILER HITCH    MICRO MICROWAVE    FRIDGE REFRIGERATOR



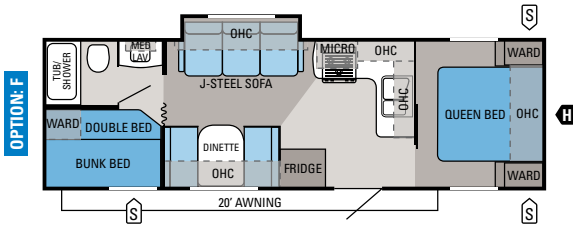
## JAY FLIGHT G2 | 23FB

Ext. Length: 26' 5" Ext. Height: 127" Unloaded Weight (lbs.): 4,685



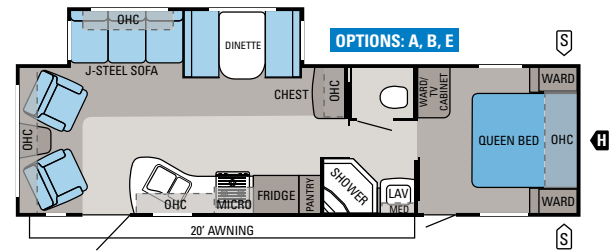
## JAY FLIGHT G2 | 25RKs

Ext. Length: 28' 4" Ext. Height: 134" Unloaded Weight (lbs.): 6,300



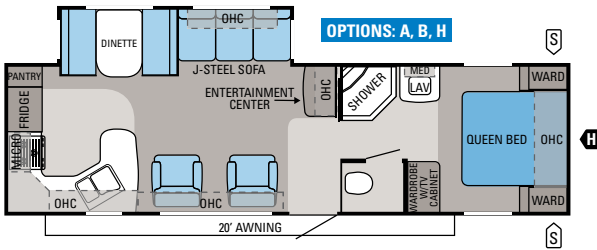
## JAY FLIGHT G2 | 29BHS

Ext. Length: 30' 6" Ext. Height: 127" Unloaded Weight (lbs.): 5,475



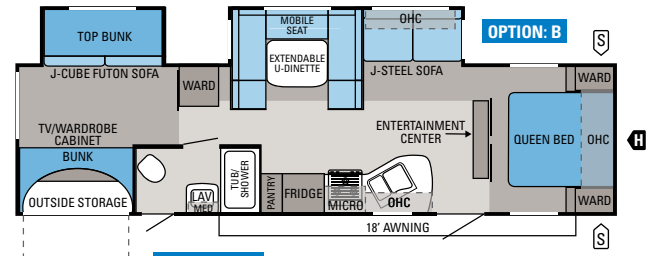
## JAY FLIGHT G2 | 29RLs

Ext. Length: 33' 7" Ext. Height: 134" Unloaded Weight (lbs.): 6,885



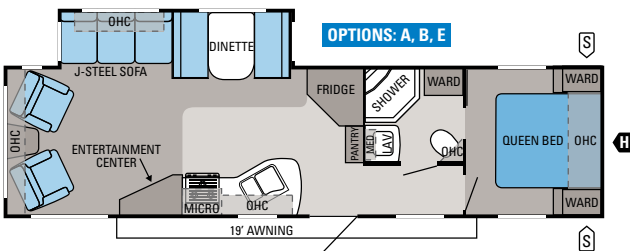
## JAY FLIGHT G2 | 31RKs

Ext. Length: 33' 8" Ext. Height: 134" Unloaded Weight (lbs.): 6,890



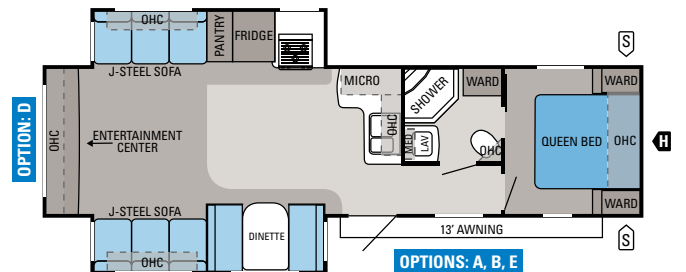
## JAY FLIGHT G2 | 32BHDS

Ext. Length: 35' 6" Ext. Height: 134" Unloaded Weight (lbs.): 7,880



## JAY FLIGHT G2 | 32RLs

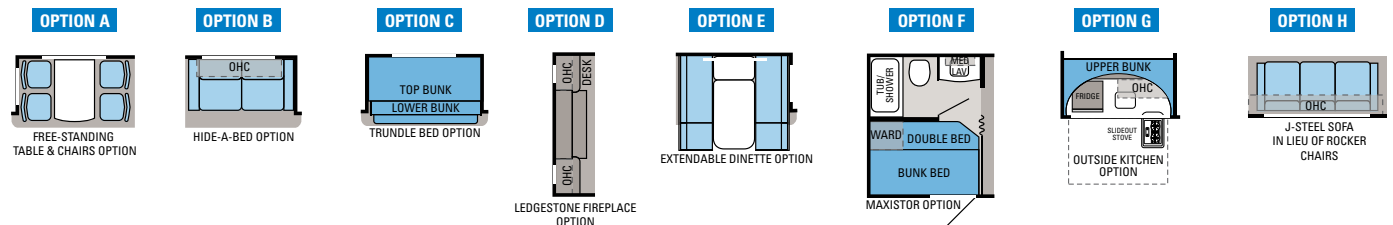
Ext. Length: 35' 6" Ext. Height: 134" Unloaded Weight (lbs.): 7,165



## JAY FLIGHT G2 | 33RLDS

Ext. Length: 35' 6" Ext. Height: 133" Unloaded Weight (lbs.): 7,925

## FLOORPLAN OPTIONS



# Jay Flight G2 | STANDARDS AND OPTIONS

## STANDARD BATHROOM EQUIPMENT

- 6-panel residential-style door
- Bar and towel ring
- Glass shower door (select models)
- Large sink in bathroom
- Marine toilet with foot flush
- Medicine cabinet with mirror
- Shower curtain with curved shower track (select models)
- Toilet paper holder
- Vinyl flooring

## STANDARD BEDROOM EQUIPMENT

- 312-coil innerspring mattress with 1" padding
- Bedroom roof vent
- Carpeting with padding (select models)
- Privacy curtain (select models)
- Sliding, pocket-style door (select models)
- Under-bed storage, bed lifts easily on gas struts (select models)

## STANDARD KITCHEN EQUIPMENT

- 3-burner range with 9,000-BTU SuperBurner and piezo igniter
- 12-inch decorative backsplash
- Access doors to the dinette booth
- Concord Cherry raised-panel doors and drawers on overhead cabinetry and refrigerator
- Dream Dinette mechanism, raises and lowers dinette table top (select models)
- Extra large picture window at dinette
- Mixing high-rise faucet with brass connectors
- Offset double-bowl kitchen sink
- Oversized oven
- Range hood with light and exhaust fan
- Sponge holder under sink

## STANDARD CONSTRUCTION FEATURES

- .024" aluminum exterior skin
- 1/2" plywood dinette, bed and bunk platforms
- 5/8" tongue-and-groove plywood main floor decking
- 2" x 3" longitudinal floor joists on 16"-18" centers
- 81" living room ceiling height
- Electric-powered slideout (all slideout models)
- Fully decked roof with 3/8" plywood
- I-Class cambered structural steel I-beam frame
- One-piece seamless rubber roof material
- Poly Flex one-piece underbelly covering
- R-7 fiberglass insulation in sidewalls, roof and floor
- Roof rafters, constructed of residential-style tapered 4-1/2" trusses
- Wall studs on 16" centers

## STANDARD EXTERIOR EQUIPMENT

- 15" radial tires
- Aerodynamic front profile

- Amber patio light with inside switch
- Lockable baggage doors with radius corners
- Big Easy entrance step with 10" deep treads (select models)
- Bumper with drain hose carrier and end caps
- Chrome hub caps
- Combined cable and satellite hookup
- Durable fender skirts
- E-Z Lube axles

- Exterior speakers, high-output marine-grade (2)
- Foldable, exterior grab handle
- Galvanized-steel wheel wells (insulated on non-slide models)
- Painted bottom radius skirting
- Propane gas bottle cover, made of molded ABS
- Radius-cornered 30" fiberglass main entrance door with screen door
- Stabilizer jacks (2 pairs)
- Tinted, black, radius-cornered awning-style windows
- Torq-N-Go wheel nuts

## STANDARD INTERIOR EQUIPMENT

- 26" LCD HDTV in living area
- Ball bearing drawer guides 50-lb. capacity with full-drawer extension
- Cable and satellite TV prepped with RG6 coax cabling
- Carpeting with padding
- Concord Cherry glazed doors and drawers
- Crank-up digital TV antenna with signal booster
- Decorative nickel lighting over sofa and dinette
- Fabric-covered box valances with lambrequin legs
- J-Steel convertible sofa
- Overhead cabinetry in slideout room above sofa
- Pleated night shades
- Residential furniture, designed and made by Jayco
- Roof-mounted antenna for radio
- Swivel rocker(s) (1 or 2 on select models)
- Wallpaper border

## STANDARD HEAT, POWER & WATER EQUIPMENT

- 6-gal. gas/electric auto-ignition water heater
- 12V electrical system with deluxe 120V
- 45-amp power converter
- 12V demand water pump
- 30-amp power cord
- 120V G.F.C.I. protected exterior receptacle
- A/C Chillgrille
- ABS holding tanks
- Auto-ignition furnace with wall thermostat
- Hookup for city water
- In-floor ducted heat
- Outside shower
- Systems monitor panel
- Water system winterization kit
- WaterWorks System

## STANDARD SAFETY EQUIPMENT

- Breakaway switch
- Deadbolt lock on entrance door
- Dual hitch safety chains
- Egress window
- Fire extinguisher
- Propane/carbon monoxide alarm
- Smoke alarm
- Tinted safety-glass windows

## OPTIONS

- 8 cu. ft. refrigerator
- Aluminum rims
- Bike rack/cargo tray system (select models)
- Customer Value Package
- Customer Value Package with 15,000-BTU central A/C
- Electric stabilizer jacks
- Electric tongue jack
- Extendable dinette (select models)
- Free-standing table with 4 chairs (select models)
- Front diamond plate
- Hide-a-bed (select models)
- Hide-a-bed on doorside (select models)
- J-Steel convertible sofa in lieu of rocker chairs (31RKS)
- Ledgestone fireplace (select models)
- Linoleum in living area
- Maxistor door (select models)
- Outside kitchen (select models)
- Portable, outside gas grill
- Roof ladder
- Satellite kit
- Sofa in lieu of swivel chairs (2) (select models)
- Thermal Package
- Trundle bed in lieu of futon (select models)
- Water purification system

## CUSTOMER VALUE PACKAGE

- 13,500 or 15,000-BTU A/C with wall thermostat with louvered-directional ceiling vents
- ABS tub surround
- Bathroom power vent
- Carefree Travel'r 12V adjustable pitch electric patio awning
- Double 30-lb. propane gas bottles with regulator
- Microwave oven with carousel
- Multi-Media Premium Sound System AM/FM/CD/DVD stereo with MP3 input jack
- Quilted bedspread
- Shirt wardrobe in bedroom
- Sink cover/cutting board (1)
- Spare tire and tire carrier
- Tub/shower skylight
- Water heater bypass system

# Jay Flight G2 | SPECIFICATIONS

FLOORPLAN	EXTERIOR LENGTH	EXTERIOR HEIGHT (WITH A/C)	INTERIOR HEIGHT	UNLOADED VEHICLE WEIGHT (LBS.)	DRY HITCH WEIGHT (LBS.)	GROSS VEHICLE WEIGHT RATING (LBS.)	CARGO CARRYING CAPACITY (LBS.)	FRESH WATER CAPACITY (GAL.) (WITH WATER HEATER)	GRAY WASTEWATER CAPACITY (GAL.)	TOILET/BLACK WASTEWATER CAPACITY (GAL.)
23FB	26' 5"	127"	81"	4,685	565	6,750	2,065	86	32.5	32.5
25RKS	28' 4"	134"	81"	6,300	945	8,180	1,880	86	65	32.5
29BHS	30' 6"	127"	81"	5,475	715	7,700	2,225	86	32.5	32.5
29RLS	33' 7"	134"	81"	6,885	900	9,000	2,115	86	32.5	32.5
31RKS	33' 8"	134"	81"	6,890	1,015	9,000	2,110	86	65	32.5
32BHDS	35' 6"	134"	81"	7,880	1,055	9,950	2,070	86	32.5	32.5
32RLS	35' 6"	134"	81"	7,165	975	9,200	2,035	86	65	32.5
33RLDS	35' 6"	133"	81"	7,925	955	9,950	2,025	86	32.5	32.5

# Jay Flight Bungalow



## MAKE YOURSELF AT HOME

More spacious than a traditional travel trailer and less expensive than building on-site, the Jay Flight Bungalow park trailer features comfortable living spaces, ample storage, residential amenities and high-end finishing touches. Home is wherever you park it.



JAY FLIGHT BUNGALOW 40FER | SIENNA

## ROOMY

Eight-foot ceilings, Burnished Cherry cabinetry and an open 40-foot floor-plan make the Bungalow park trailer the perfect home away from home.

## EXTENDED STAY

Designed to be semi-permanently sited, the Bungalow park trailer is ideal for long-term stays at your favorite seasonal vacation spot.





JAY FLIGHT BUNGALOW 40FER | SIENNA



JAY FLIGHT BUNGALOW 40FER | SIENNA



JAY FLIGHT BUNGALOW 40FER | SIENNA

# Jay Flight Bungalow | STANDARDS AND OPTIONS

## STANDARD BATHROOM EQUIPMENT

- ↑ 6-panel residential-style passage door
- ABS garden tub
- Bar and towel ring
- Glass shower door
- Large sink in bathroom
- Medicine cabinet with mirror
- ↑ Thetford porcelain stool with foot pedal
- Toilet paper holder
- Vinyl flooring
- ↑ Washer/dryer prep for stackable unit

## STANDARD BEDROOM EQUIPMENT

- ↑ 312-coil innerspring pillowtop mattress (60" x 80")
- Bedroom roof vent
- ↑ Carpeting with padding
- Shirt wardrobe in bedroom
- ↑ Sliding, pocket-style door (select models)
- ↑ Stereo speakers (2)
- Under-bed storage, bed lifts easily on gas struts (select models)

## STANDARD KITCHEN EQUIPMENT

- ↑ 18 cu. ft. residential-style 120V refrigerator with ice maker
- ↑ 20" free-standing 4-burner gas range with oven
- Extra large picture window at dinette
- ↑ Microwave with built-in hood over the range
- ↑ Mixing high-rise faucet with brass connectors
- ↑ Offset deep-dish acrylic residential-style sink
- Sponge holder under sink
- Wastebasket

## STANDARD CONSTRUCTION FEATURES

- ↑ .024" aluminum exterior skin
- ↑ 1/2" plywood dinette, bed and bunk platforms
- ↑ 5/8" tongue-and-groove plywood main floor decking
- 2" x 3" longitudinal floor joists on 16"-18" centers
- 96" living room ceiling height
- ↑ 102" wide
- ↑ Atrium front profile with fiberglass cap
- ↑ Detachable hitch
- Electric-powered slideout (all slideout models)
- Fully decked roof with 3/8" plywood
- ↑ I-Class cambered structural steel I-beam frame
- One-piece, seamless rubber roof material
- Poly Flex one-piece underbelly covering
- R-7 fiberglass insulation in sidewalls, roof and floor
- Roof rafters, constructed of residential-style tapered 4-1/2" trusses
- Wall studs on 16" centers

## STANDARD EXTERIOR EQUIPMENT

- ↑ 16" radial tires
- ↑ 60" patio door (primary)
- Amber patio light with inside switch

- ↑ Big Easy entrance step with 10" deep treads
- Bumper with drain hose carrier and end caps
- ↑ Carefree patio awning
- Combined cable and satellite hookup
- Durable fender skirts
- Lockable baggage doors with radius corners
- E-Z Lube axles
- ↑ Exterior speakers, high-output marine-grade (2)
- ↑ Nev-R-Adjust brakes
- Painted bottom radius skirting
- Rain guttering, molded with drip spouts
- Security light (door-side only)
- ↑ Tinted, black, radius-cornered awning-style windows
- ↑ Torq-N-Go wheel nuts
- White plastic grab handle

## STANDARD INTERIOR EQUIPMENT

- ↑ Ball bearing drawer guides 50-lb. capacity with full-drawer extension
- ↑ Bar stools (2)
- ↑ Bedroom and living room ceiling paddle fans (120V)
- Cable and satellite TV prepped with RG6 coax cabling
- ↑ Carpeting with padding
- ↑ Burnished Cherry cabinetry
- Crank-up digital TV antenna with signal booster
- Decorative nickel lighting over sofa and dinette
- Fabric-covered box valances with lambrequin legs
- Free-standing table with (4) chairs
- ↑ Hide-a-bed (air mattress)
- Overhead cabinetry in slideout room above sofa, with etched glass
- ↑ Pleated night shades
- ↑ Raised-panel cabinet doors throughout
- ↑ Residential furniture, designed and made by Jayco
- Residential-style trim and molding
- ↑ Rocker recliners (select models)
- Roof-mounted antenna for radio
- ↑ Rustic plank wood-grain vinyl flooring in kitchen and bath
- Vertical blinds at patio door
- Wall lights in slideout
- Wallpaper border

## STANDARD HEAT, POWER & WATER EQUIPMENT

- ↑ 2nd A/C prep
- ↑ 10-gal. gas/electric auto-ignition water heater
- 12V demand water pump
- 12V electrical system with deluxe 120V
- 90-amp power converter
- ↑ 50-amp detachable power cord with second A/C prep
- 120V G.F.C.I. protected exterior receptacle
- 40,000-BTU furnace
- A/C Chillgrille
- ABS holding tanks
- ↑ Fireplace with decorative trim
- Hookup for city water

- In-floor ducted heat
- Outside shower
- Systems monitor panel
- Water system winterization kit

## STANDARD SAFETY EQUIPMENT

- Breakaway switch
- Deadbolt lock on entrance door
- Dual hitch safety chains
- Egress window
- Fire extinguisher
- Propane/carbon monoxide alarm
- Smoke alarm
- Tinted safety-glass windows

## OPTIONS

- 2nd A/C in bedroom
- 2nd glider recliner (40FER, 40FKS)
- 20-gal. electric water heater
- Customer Value Package
- Extendable dinette
- Ledgestone fireplace
- Linoleum in living area (40FER, 40FKS)
- No patio awning
- Portable, outside gas grill
- Rear queen bed (40BHS)
- Roof ladder
- Satellite kit
- Shower in lieu of garden tub
- Slideout awnings
- Spare tire
- Thermal Package
- Thermal pane tinted safety-glass windows

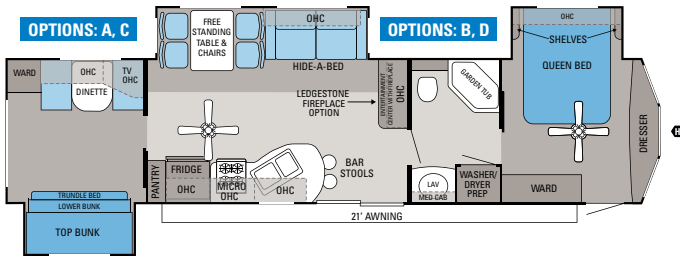
## CUSTOMER VALUE PACKAGE

- ↑ 30" microwave oven with carousel
- ↑ 15,000-BTU A/C with wall thermostat with louvered-directional ceiling vents
- ↑ ABS garden tub surround
- ↑ Bathroom power vent
- ↑ Double 30-lb. propane gas bottles with regulator
- ↑ Multi-Media Premium Sound System AM/FM/CD/DVD stereo with MP3 input jack
- ↑ Quilted bedspread
- ↑ Sink cover/cutting board (2)
- ↑ Stabilizer jacks (4)
- ↑ Tub/shower skylight
- ↑ Water heater bypass system

# Jay Flight Bungalow | SPECIFICATIONS

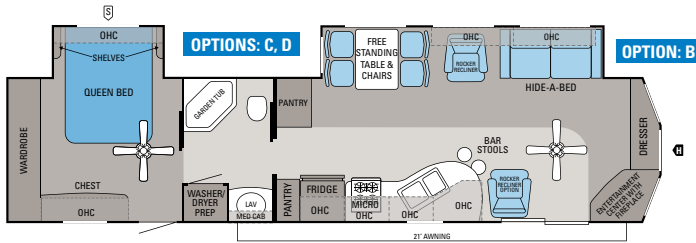
FLOORPLAN	EXTERIOR LENGTH	EXTERIOR HEIGHT (WITH A/C)	INTERIOR HEIGHT	UNLOADED VEHICLE WEIGHT (LBS.)	DRY HITCH WEIGHT (LBS.)	GROSS VEHICLE WEIGHT RATING (LBS.)	CARGO CARRYING CAPACITY (LBS.)	FRESH WATER CAPACITY (GAL.) (WITH WATER HEATER)	GRAY WASTEWATER CAPACITY (GAL.)	TOILET/BLACK WASTEWATER CAPACITY (GAL.)
40BHS	40' 11"	151"	96"	11,005	1,660	12,500	1,495	50	65	32.5
40FER	40' 11"	151"	96"	10,750	1,800	12,500	1,750	50	65	32.5
40FKS	40' 11"	151"	96"	10,790	1,585	12,500	1,710	50	65	32.5

# Jay Flight Bungalow | FLOORPLANS



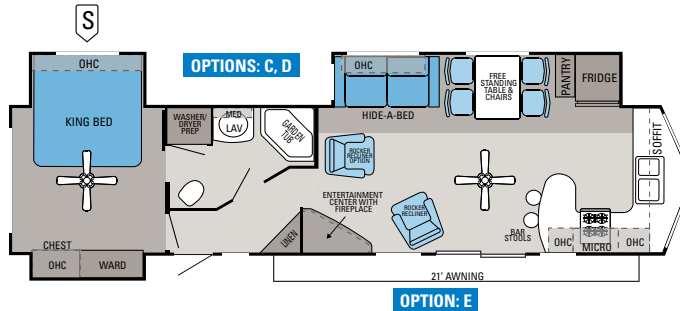
## JAY FLIGHT BUNGALOW | 40BHS

Ext. Length: 40' 11" Ext. Height: 151" Unloaded Weight (lbs.): 11,005



## JAY FLIGHT BUNGALOW | 40FER

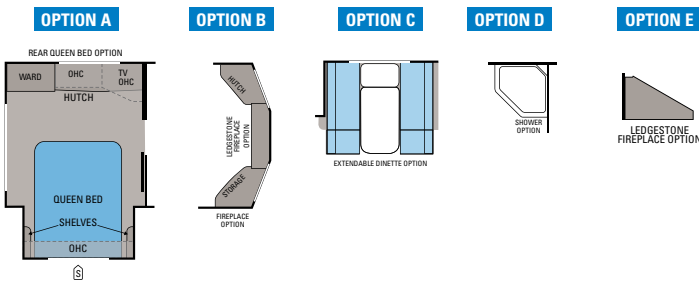
Ext. Length: 40' 11" Ext. Height: 151" Unloaded Weight (lbs.): 10,750



## NEW JAY FLIGHT BUNGALOW | 40FKS

Ext. Length: 40' 11" Ext. Height: 151" Unloaded Weight (lbs.): TBD

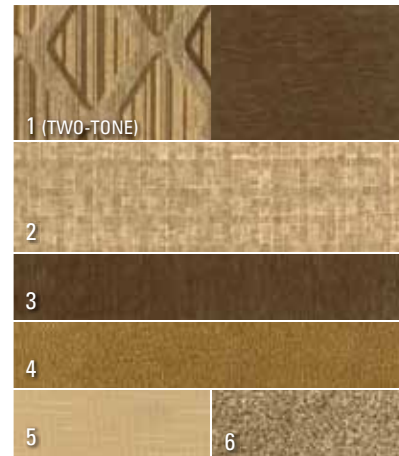
### FLOORPLAN OPTIONS



- OUTSIDE STORAGE
- TRAILER HITCH
- LAV BATHROOM SINK
- MICRO MICROWAVE
- OHC OVERHEAD CABINETS
- FRIDGE REFRIGERATOR
- WARD WARDROBE

# Jay Flight | INTERIOR DÉCOR CHOICES

## DRIFTWOOD



- 1 Sofa
- 2 Bedspread
- 3 Accent fabric
- 4 Chair
- 5 Drapery
- 6 Carpet

## WHEAT



## SIENNA



## WOOD



## ↑ LIVEABLE FEATURES AND AMENITIES

Every Jayco comes packed with features and amenities designed to make your life easier and family time more enjoyable.



### DUAL-VIEW HDTV

A 180-degree swivel lets you watch the 22" LCD HDTV in the living area or bedroom (select models).



### CAREFREE PATIO AWNING

With the new, adjustable-pitch electrical awning, you can spend more time outdoors while protecting yourself from the rain or sun (G2 models only).



### STORAGE SPACE

There's plenty of room for all your stuff thanks to Jay Flight's innovative use of space.



### CENTRAL A/C

The Customer Value Package offers a 13,500-BTU or 15,000-BTU air conditioning, wall thermostat and directional, closeable ceiling vents.



## A TRADITION OF LIVEABILITY

Starting with our first lifter system for fold-down campers in 1968, which made for an easier, more enjoyable camping experience, Jayco has always been about liveability. Today, we're the world's largest family-owned RV manufacturer, yet our priorities remain the same: making RVs more liveable and family time more memorable.





DREAM DINETTE

Without a pedestal leg, the Dream Dinette offers plenty of leg room, while it easily raises and lowers the tabletop when it's time for bed.



ATRIUM-STYLE PROFILE

An atrium-style front profile with fiberglass cap and a 60" patio door add residential style to the Bungalow's exterior.



TRUE VALUE OF OWNERSHIP

With Jayco, you get more amenities, more liveable, home-like features and superior construction for longer durability and a better resale value. Simply put, you won't find another RV packed with more *true value*—from the time of purchase to the time you sell. Don't believe us? Run through this list. The check marks don't lie.

US THEM

2011 JAY FLIGHT

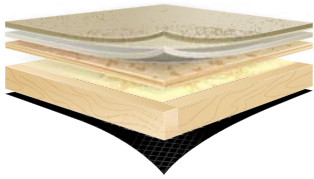
- 2-year industry-leading Co-Pilot warranty
- TRA Green Certified, gold level
- I-Class structural I-beam frame
- 5/8" tongue-and-groove floor and 3/8" roof decking
- Cherry cabinetry throughout
- Electric slideouts with enclosed tube for wiring/gears
- Aerodynamic front profile and skirting (Jay Flight and G2)
- 75+ gallons of fresh-water capacity (Jay Flight and G2)
- Ball bearing drawer guides throughout
- 30" entrance door (Jay Flight and G2)



AMERICA'S MOST LIVEABLE RVs.

# Jay Flight

TRAVEL AND PARK TRAILERS BY JAYCO



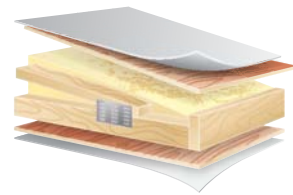
## FLOOR

Jay Flight's floor features  $\frac{5}{8}$ " tongue-and-groove plywood with 2"x 3" floor joists and R-7 fiberglass insulation.



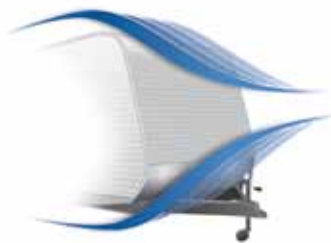
## WALLS

The walls consist of 2"x 2" wood studs, .024 aluminum exterior siding and R-7 fiberglass insulation.



## ROOF

Our roof combines wood rafters with 4- $\frac{1}{2}$ " arched trusses,  $\frac{3}{8}$ " plywood decking, a one-piece seamless rubber membrane and R-7 fiberglass insulation. (The Thermal Package option increases the R-value to 22.)



## AERODYNAMIC PROFILE

A new profile design for 2011 helps improve the aerodynamics of the Jay Flight and G2, making your towing experience a smooth one.

## ↑ JAYCO CONSTRUCTION

# See the difference.

At Jayco, we've built a reputation for superior construction and craftsmanship. We always use top-quality materials and production techniques, giving our products reliable resale value and our owners peace of mind.

### ◀ INSIDE ENGINEERING

Much of what gives a Jayco its reputation for durability and strength is inside the walls and under the chassis. The Jay Flight features ① an advanced WaterWorks system with 75-plus gallons of fresh water capacity (Jay Flight and G2), ② an aerodynamic front profile and skirting (Jay Flight and G2), ③ electric slides with enclosed tubing for wiring and gear (Jay Flight and G2) and ④ a Carefree adjustable-pitch electric awning (G2).



#### ELECTRIC SLIDEOUT SYSTEM

Wiring in our electric slideout system is enclosed to prevent tangling, while the cog-drive is more reliable and less prone to jamming.



#### BALL BEARING GUIDES

Our new residential-style ball bearing drawer guides provide smooth operation and full-drawer extension for a stronger, more substantial drawer and a true home-like feel.



#### PREMIUM STEEL FRAME

The Jayco I-Class structural steel chassis frame makes Jay Flight stronger and more durable than our competitors' standard welded I-beam frames, which can warp over time.

## ↑ JAYCO CRAFTSMANSHIP

Jayco's dedicated production team includes Amish craftsmen who build with well-honed woodworking techniques passed down for generations and skilled seamstresses who produce our upholstery, bedding and draperies with great attention to detail.





AMERICA'S MOST **LIVEABLE** RVs.



## INDUSTRY-LEADING WARRANTY

The Jayco Co-Pilot Warranty is a manufacturer's limited warranty. It comes from the people who build Jayco recreation vehicles to the people who buy them. Each Jayco is warranted to the original purchaser for twenty-four (24) months or twenty-four thousand (24,000) miles (mileage limitation applies to motorized products only), whichever occurs first, from the original date of purchase against defects in materials and workmanship. Jayco's limited warranty is not transferable. Go ahead and compare the Jayco warranty with other manufacturers' warranties. You'll find it's the best in the business!

For a copy of the limited warranty with full terms and conditions, ask your local Jayco dealer.



## OVER 300 LOCAL DEALERS

Establishing a solid relationship with your local Jayco dealer is a key component in the enjoyment of your new Jayco. By purchasing from a local dealer, you will have a convenient location for sales, parts and service support.

Jayco dealers are required to deliver all products at the site of the sale to provide a full product orientation and walkthrough at the time of delivery. It's a good way to become familiar with your Jayco and to meet the service, parts and warranty staff members who will be assisting you. If you live in Canada, there are regulations that must be met when buying a Jayco RV. Your local Canadian dealer is a professional at meeting these requirements and regulations. There simply is no substitute for a good relationship with your local Jayco dealer.



## 1-YEAR ROADSIDE ASSISTANCE

Travel worry-free with Jayco's Customer First Roadside Assistance program, yours at no cost during your first year of ownership. This program is offered through Coach-Net, the largest RV emergency road service in the country, and gives you immediate access to dependable roadside assistance and support services with a simple phone call.

- Free jump starts
- Free tire changes
- Free fuel delivery
- Free lockout service
- Free travelers checks
- Toll-free nationwide service appointment assistance
- 24-hour toll-free emergency message service
- Free custom trip routing and full-color map service
- Free dispatch of on-site mechanical service
- \$2,000 trip-interruption reimbursement
- RV technical assistance hotline
- Free towing to nearest qualified service

### Your Jayco Dealer



Jayco proudly sponsors Tread Lightly!, a nonprofit organization whose mission is to empower generations to enjoy the outdoors responsibly through education and restoration.



From RV insurance to extended warranties, JayPlus has it covered. Ask your Jayco dealer about our exclusive JayPlus program today.



As a Jayco owner, you can be part of the Jayco Jafari International Travel Club. Ask your dealer about the Jafari "flight" in your area, write Jayco or visit our website.

**Unloaded Vehicle Weight (UVW):** Sometimes referred to as "Dry Weight," UVW means the typical weight of this trailer as built at the factory. The UVW, as used in product literature and other promotional materials, does not include cargo, fresh water, propane, options or dealer-installed accessories.

**Gross Vehicle Weight Rating (GVWR):** GVWR means the maximum permissible weight of the trailer, including the UVW plus passengers, personal items, all cargo, fluids, options, and dealer-installed accessories. The GVWR is equal to or greater than the sum of the UVW and the CCC.

**Cargo Carrying Capacity (CCC):** CCC means the maximum weight of all passengers, personal items, food, fresh water, propane, tools, other cargo and dealer-installed accessories that can be carried by the trailer. CCC is equal to or less than GVWR minus UVW. The addition of options will decrease the CCC.

**Hitch Weight (HW):** The hitch weight, as used in product literature and other promotional materials, does not include cargo, fresh water, propane gas, options or dealer-installed accessories. The addition of these types of items will either add to or subtract from the stated hitch weight.

It is important for your safety and enjoyment that your tow vehicle be adequately sized and equipped to tow and handle the GVWR of the RV you select. Review weights and rating of your tow vehicle and consult a competent advisor for questions or advice. Whether you are new to RVing or a veteran, get a feel for the performance of your tow vehicle before heading out on the roadways. When you tow an RV, you must drive differently than when you drive a single vehicle. Practice hooking up, driving, backing up and braking in a safe environment or seek out professional instruction. Jayco affixes a weight label to each RV which lists weight information for that vehicle. See specifications chart inside.

Jayco, Inc., P.O. Box 460, Middlebury, IN 46540, [www.jayco.com](http://www.jayco.com) © **RVA**

See dealer for further information and prices. All information in this brochure is the latest available at the time of publication approval. Jayco reserves the right to make changes and to discontinue models without notice or obligation. Photos in this brochure may show optional equipment and props for photography purposes. RVs built for sale in Canada may differ to conform to Canadian codes. ©2011 Jayco, Inc. 11-JFL-PL 0111-20K Printed in U.S.A.