

Jayco | 2025 Jay Flight SLX Travel Trailer



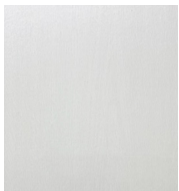
JAY FLIGHT SLX

#1 SELLING TRAVEL TRAILER FOR 15 YEARS

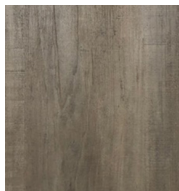
2+3
YEAR | YEAR
WARRANTY



CLASSIC FARMHOUSE



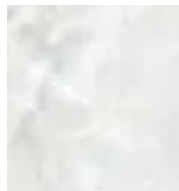
Main Wood



Accent Wood



Floor



Countertop



Main Fabric



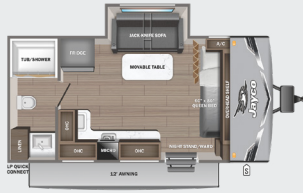
Accent Fabric

JAY FLIGHT SLX



SINGLE AXLE

160LK/W



170BH/W

SPORT



170FQ/W

SPORT



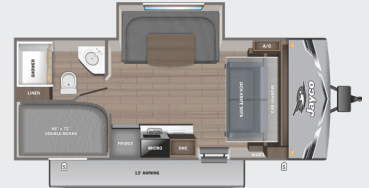
175BH/W



175FQ/W

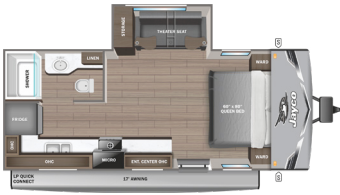


197MB/W



DOUBLE AXLE

200MKS/W



210QB/W



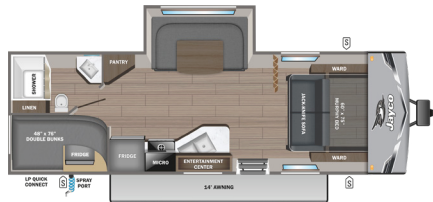
211MB/W



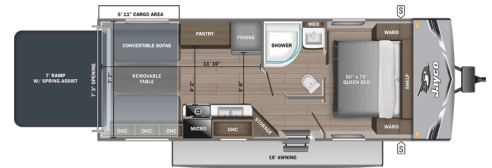
225MLS/W



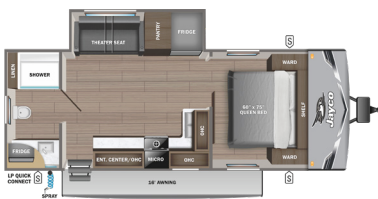
235MBH/W



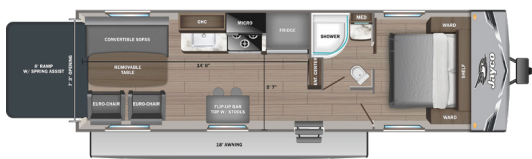
236TH/W



240RBS/W



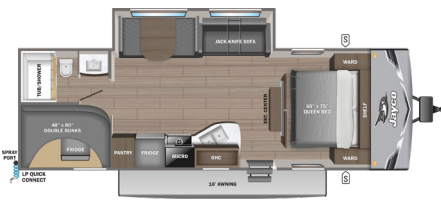
255THW



260BH/W



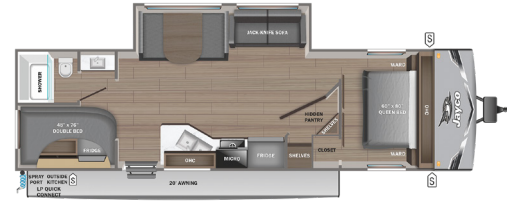
261BHS/W



262RLS/W



263BHS/W



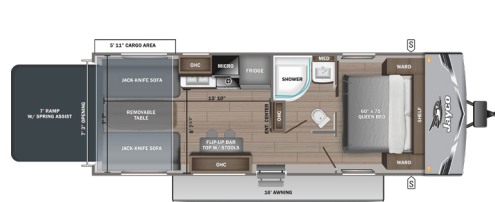
263RBS



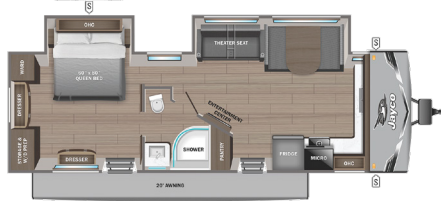
265BHS/W



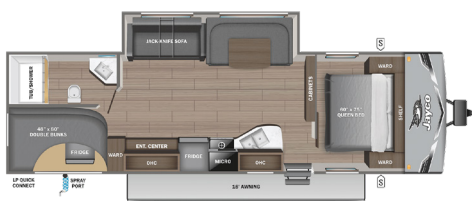
265TH/W



280FKS



284BHS



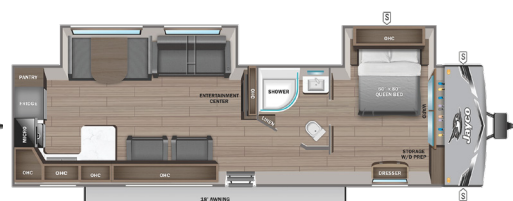
286BHSW



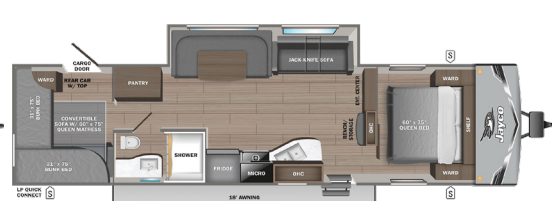
287BHS/W



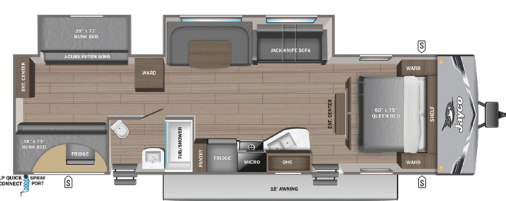
290RKS



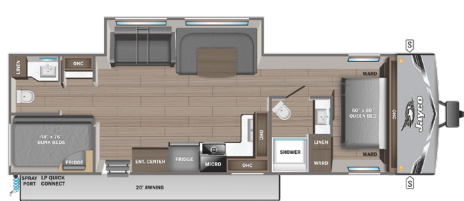
294QBS



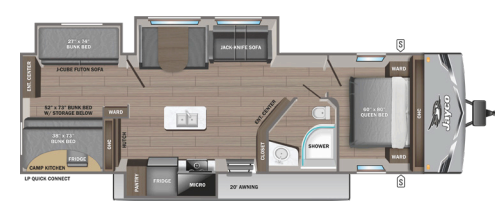
321BDS



330TBS



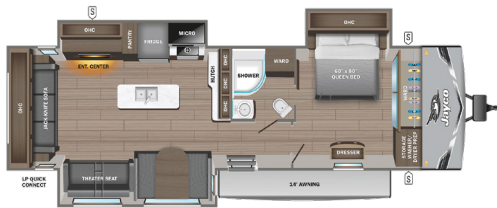
333BTS



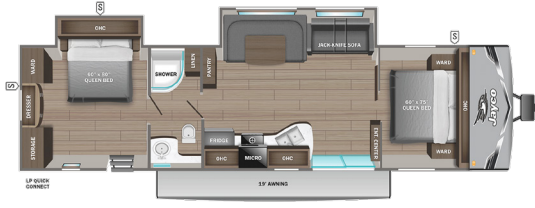
JAY FLIGHT SLX



334RTS



380DQS



/W WEST MODEL

	STORAGE
	MICROWAVE
	OVERHEAD CABINETS
	REFRIGERATOR
	WARDROBE

*Indicates split tanks

FLOORPLAN	TOTAL EXTERIOR LENGTH	EXTERIOR WIDTH	EXTERIOR HEIGHT (WITH A/C)	INTERIOR HEIGHT	UNLOADED VEHICLE WEIGHT	DRY HITCH WEIGHT	GVWR	CARGO CARRYING CAPACITY	FRESH WATER CAPACITY	GRAY WASTE WATER CAPACITY	BLACK WASTE WATER CAPACITY	SLEEPING CAPACITY
160LK	21' 5"	8' 0"	10' 3"	6' 6"	3,545	325	4,750	1,205	30	20	20	2-4
160LKW	21' 7"	8' 0"	10' 2"	6' 6"	3,540	355	4,750	1,210	30	20	20	2-4
170BH	21' 3"	8' 0"	10' 3"	6' 6"	3,000	315	3,750	750	30	20	20	3-5
170BHW	TBD	8' 0"	TBD	6' 6"	TBD	TBD	TBD	TBD	TBD	TBD	TBD	3-5
170FQ	TBD	8' 0"	TBD	6' 6"	TBD	TBD	TBD	TBD	TBD	TBD	TBD	2-3
170FQW	TBD	8' 0"	TBD	6' 6"	TBD	TBD	TBD	TBD	TBD	TBD	TBD	2-3
175BH	22' 1"	8' 0"	10' 3"	6' 6"	3,215	305	4,500	1,285	30	20	20	3-5
175BHW	22' 1"	8' 0"	10' 3"	6' 6"	3,150	305	4,600	1,450	30	20	20	3-5
175FQ	21' 11"	8' 0"	10' 6"	6' 6"	3,295	304	4,500	1,205	30	20	20	2-3
175FQW	21' 11"	8' 0"	10' 2"	6' 6"	3,160	320	4,500	1,340	30	20	20	2-3
197MB	23' 5"	8' 0"	10' 3"	6' 6"	3,990	585	5,150	1,160	30	39	39	6-8
197MBW	23' 7"	8' 0"	10' 3"	6' 6"	3,785	585	5,140	1,355	30	40	40	6-8
200MKS	34' 4"	8' 0"	11' 1"	6' 6"	4,790	525	7,900	1,705	52	39	39	1-2
200MKS	TBD	8' 0"	TBD	6' 6"	TBD	TBD	TBD	TBD	TBD	TBD	TBD	1-2
210QB	25' 10"	8' 0"	10' 7"	6' 6"	4,255	520	6,000	1,745	52	39	39	3-5
210QBW	25' 8"	8' 0"	10' 6"	6' 6"	4,190	470	6,000	1,810	84	40	40	3-5
211MB	24' 6"	8' 0"	10' 6"	6' 6"	6,170	750	3,500	1,430	84	40	40	5-7
211MBW	24' 6"	8' 0"	10' 6"	6' 6"	4,120	510	6,000	1,880	84	40	40	5-7
225MLS	TBD	8' 0"	TBD	6' 6"	TBD	TBD	TBD	TBD	TBD	TBD	TBD	2-3
225MLSW	TBD	8' 0"	TBD	6' 6"	TBD	TBD	TBD	TBD	TBD	TBD	TBD	2-3
235MBH	TBD	8' 0"	TBD	6' 6"	TBD	TBD	TBD	TBD	TBD	TBD	TBD	5-7
235MBHW	TBD	8' 0"	TBD	6' 6"	TBD	TBD	TBD	TBD	TBD	TBD	TBD	5-7
236TH	TBD	8' 0"	TBD	6' 6"	TBD	TBD	TBD	TBD	TBD	TBD	TBD	4-6
236THW	TBD	8' 0"	TBD	6' 6"	TBD	TBD	TBD	TBD	TBD	TBD	TBD	4-6
240RBS	TBD	8' 0"	TBD	6' 6"	TBD	TBD	TBD	TBD	TBD	TBD	TBD	1-2
240RBSW	TBD	8' 0"	TBD	6' 6"	TBD	TBD	TBD	TBD	TBD	TBD	TBD	1-2
255THW	TBD	8' 0"	TBD	6' 6"	TBD	TBD	TBD	TBD	TBD	TBD	TBD	2-4
260BH	29' 5"	8' 0"	10' 5"	6' 9"	4,600	505	6,500	1,900	84	40	40	7-9
260BHW	29' 5"	8' 0"	10' 5"	6' 9"	4,600	505	6,500	1,900	84	40	40	7-9
261BHS	30' 4"	8' 0"	12' 0"	6' 9"	5,750	710	7,500	1,750	52	39	39	7-9
261BHSW	TBD	8' 0"	TBD	6' 9"	TBD	TBD	TBD	TBD	TBD	TBD	TBD	7-9
262RLS	32' 0"	8' 0"	11' 1"	6' 9"	6,080	790	7,600	1,520	52	39	39	3-5
262RLSW	31' 1"	8' 0"	10' 7"	6' 9"	6,035	760	7,600	1,565	80	40	40	3-5
263BHS	32' 7"	8' 0"	11' 1"	6' 9"	6,170	750	7,600	1,430	30	71.25*	39	7-9
263BHSW	TBD	8' 0"	TBD	TBD	TBD	TBD	TBD	TBD	TBD	TBD	TBD	7-9
263RBS	TBD	8' 0"	TBD	TBD	TBD	TBD	TBD	TBD	TBD	TBD	TBD	2-3
265BHS	30' 10"	8' 0"	11' 1"	6' 9"	5,955	635	7,600	1,645	52	78*	39	7-9
265BHSW	30' 10"	8' 0"	11' 0"	6' 9"	5,875	600	7,600	1,725	76	80*	40	7-9
265TH	TBD	8' 0"	TBD	TBD	TBD	TBD	TBD	TBD	TBD	TBD	TBD	4-6
265THW	TBD	8' 0"	TBD	TBD	TBD	TBD	TBD	TBD	TBD	TBD	TBD	4-6
280FKS	TBD	8' 0"	TBD	TBD	TBD	TBD	TBD	TBD	TBD	TBD	TBD	2-3

Some specs at the time of print may include estimates. For the most updated information, please visit Jayco.com

STANDARDS & OPTIONS

FLOORPLAN	TOTAL EXTERIOR LENGTH	EXTERIOR WIDTH	EXTERIOR HEIGHT (WITH A/C)	INTERIOR HEIGHT	UNLOADED VEHICLE WEIGHT	DRY HITCH WEIGHT	GVWR	CARGO CARRYING CAPACITY	FRESH WATER CAPACITY	GRAY WASTE WATER CAPACITY	BLACK WASTE WATER CAPACITY	SLEEPING CAPACITY
284BHS	TBD	8' 0"	TBD	TBD	TBD	TBD	TBD	TBD	TBD	TBD	TBD	7-9
286BHSW	TBD	8' 0"	TBD	TBD	TBD	TBD	TBD	TBD	TBD	TBD	TBD	7-8
287BHS	34' 4"	8' 0"	11' 1"	6' 9"	6,195	755	7,900	1,705	52	39	39	7-9
287BHSW	TBD	8' 0"	TBD	TBD	TBD	TBD	TBD	TBD	TBD	TBD	TBD	7-9
290RKS	TBD	8' 0"	TBD	TBD	TBD	TBD	TBD	TBD	TBD	TBD	TBD	7-9
294QBS	TBD	8' 0"	TBD	TBD	TBD	TBD	TBD	TBD	TBD	TBD	TBD	7-9
321BDS	36' 4"	8' 0"	11' 4"	6' 9"	7,600	1,070	9,300	1,700	52	39	39	7-9
330TBS	TBD	8' 0"	TBD	TBD	TBD	TBD	TBD	TBD	TBD	TBD	TBD	5-7
333BTS	37' 10"	8' 0"	11' 4"	6' 9"	8,370	1,205	10,500	2,130	52	71.5*	39	8-10
334RTS	TBD	8' 0"	TBD	TBD	TBD	TBD	TBD	TBD	TBD	TBD	TBD	2-4
380DQS	TBD	8' 0"	TBD	TBD	TBD	TBD	TBD	TBD	TBD	TBD	TBD	5-7

EXTERIOR

30-amp service
 8,000 BTU wall mount A/C (single axle models)
 Axles with electric, self-adjusting brakes and easy-lube hubs
 Exterior cable TV hookup
 Fully-integrated A-frame
 Galvanized-steel, impact resistant wheel wells
 Large exterior downspouts
 *LP quick connect (outside grill prep)
 Magnum Truss™ Roof System
 Nitrogen filled radial tires
 PVC roofing membrane (limited lifetime warranty)

INTERIOR

300 lb. rated single bunk beds
 600 lb. rated double bunk beds
 Digital TV antenna
 Heavy-duty, 75 lb., full-extension, steel ball-bearing drawer guides
 High rise kitchen faucet
 Marine-grade toilet with foot flush
 Plywood bed platforms
 Queen mattress
 Residential-style hidden cabinet door hinges
 Residential-style kitchen countertops
 Shower curtain with curved shower track (select models)
 Solid hardwood cabinet doors with screwed stile construction and hidden hinges
 Vinyl flooring throughout
 *Wood-trimmed mirror in bathroom

CUSTOMER VALUE PACKAGE (MANDATORY)

8 cu. ft. 12V refrigerator
 AM/FM/Bluetooth® stereo
 Backup camera prep
 Bathroom skylight
 Bathroom vent
 Detachable power cord
 Entry door with window and shade prep

Fitted bed sheet
 G20 dark tinted privacy windows
 Keyed-Alike™ entry and baggage doors
 Large folding entry door grab handle
 LED interior and exterior lights
 Marine grade exterior stereo speakers
 Microwave oven
 On-demand tankless water heater
 Power awning with LED lights
 Range hood
 Solid Step® entry steps
 Spare tire with cover
 Stabilizer jacks
 Tub/shower surround
 Window shades

CUSTOMER VALUE PACKAGE - SPORT EDITION

3.3 Cu Ft 12V Refrigerator
 19k BTU Furnace
 2 Burner Stove Top
 Bathroom Vent
 Detachable Power Cord
 Entry Door w/Window and Shade Prep
 G20 Dark Tinted Privacy Windows
 LED Interior and Exterior Lights
 Microwave Oven
 Stabilizer Jacks
 Window Shades
 Power Awning
 Front Tongue Jack
 Rear Bumper, 20# LP bottle
 On-demand Tankless Water Heater

STX EDITION (INDIANA BUILT UNITS ONLY)

16 in. off-road tires
 30 lb. LP bottle
 Deluxe graphics package
 Triple entry step
 Enclosed underbelly
 Oversized wheel fenders

Power tongue jack
 Stabilizer jacks (4)

BAJA PACKAGE (IDAHO BUILT UNITS ONLY)

16 in. off-road tires
 30 lb. LP bottle
 Deluxe graphics package
 Triple entry step
 Enclosed underbelly
 Oversized wheel fenders
 Stabilizer jacks (4)

OPTIONS

King bed (select models)
 Table and chairs (select models)
 13,500 BTU roof mounted A/C (standard on double axle units)
 *15,000 BTU roof mounted A/C (select models)
 *Baja Package (Idaho single axle units only)
 *Fiberglass sidewalls
 *Outside griddle with LP quick connect hose
 *Overlander 1 Solar Package: (1) 200W solar panel and 30-amp digital controller
 *STX Edition (Indiana built, single axle units only)

ELITE PACKAGE

Fiberglass walls
 Aluminum rims (on Ranier tires)
 Fireplace (N/A on 235MBH, 225MLS, 265BHS)
 Medicine cabinet
 Window in slideroom
 Enclosed underbelly
 Enhanced graphics
 Pull out kitchen faucet
 N/A on non-slideout models
 N/A Single Axles

*N/A with Sport Edition

Meet your Jayco Dealer



Scan QR code for specification definitions

Some specs at the time of print may include estimates. For the most updated information, please visit [Jayco.com](https://www.jayco.com)

Jayco, Inc. | P.O. Box 460 | Middlebury, IN 46540

See dealer for further information and prices. All information in this brochure and on www.jayco.com is the latest available at the time of publication approval. Jayco reserves the right to make changes and to discontinue models without notice or obligation. Photography may show optional equipment or props used for decoration purposes only. RVs built for sale in Canada may differ to conform to Canadian codes. JAYCO and the JAYCO BIRD IN FLIGHT are registered trademarks of Jayco, Inc. Printed in USA 11/24 ©2024 Jayco, Inc. 2032969



Jayco - Part of Jayco Family of Companies