

# OUTBACK

PREMIUM TRAVEL TRAILERS • ULTRA-LITE TRAVEL TRAILERS



LIVE IT OUT.

# OUTBACK



PREMIUM TRAVEL TRAILERS | ULTRA-LITE TRAVEL TRAILERS

## IN GOOD TASTE

Keystone Outback luxury travel trailers are designed for travelers who like to camp, but like to camp comfortably. Stylish, sophisticated and well-appointed, this brand makes no sacrifices to offer the highest quality travel trailers—grand fireplaces, impressive entertainment centers, and chef's kitchens are complemented with thoughtful convenience features, including an exclusive seven-point RV auto-leveling system.

For more information, please visit [keystonerv.com/Outback](http://keystonerv.com/Outback)



# KEYSTONE EXCLUSIVE INNOVATIONS

Designed to deliver superior performance, quality and a best-in-class camping experience, every Outback model includes engineering innovation available EXCLUSIVELY to Keystone owners. For more information about these features and the Keystone Innovation Lab, visit us online at [www.keystonerv.com/innovations](http://www.keystonerv.com/innovations).



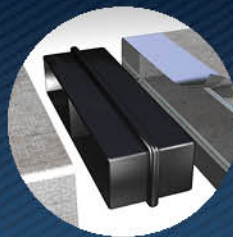
## 3-YEAR LIMITED STRUCTURAL WARRANTY, 1-YEAR LIMITED BASE WARRANTY

Every new Keystone RV comes with the industry's best three-year limited structural warranty AND a one-year limited base warranty. Ask your dealer, visit [keystonerv.com](http://keystonerv.com), or call Keystone Owner Relations for details.



### KeyTV™

No more connection guesswork or poor reception. KeyTV offers a game-changing, single point of control of over-the-air, cable, and satellite feeds.



### Tuf-Lok Thermoplastic Duct Joiners

Tuf-lok thermoplastic duct joiners form a permanent, crush-resistant seal in your air-conditioning duct.



### Color-Coded Unified Wiring Standard

Easy-to-trace circuits simplify electrical and entertainment system troubleshooting.



### HyperDeck™ High-Performance, Water-Resistant RV Floor

The HyperDeck RV floor is more resilient, stronger and lighter than traditional laminated wood construction – and it resists water and water damages.



### 4G LTE and Wi-Fi Prep

All units are equipped with a new antenna that integrates 4G LTE and Wi-Fi with standard VHF/UHF/AM/FM reception.



### Tru-fit™ Slide Construction

A more durable slide room design that minimizes functional motor and structural stress and resists leaking.



more product detail at  
[www.keystonerv.com/Outback](http://www.keystonerv.com/Outback)



## INTERIORS

The design process for Outback's current look involved constant owner input and re-imagining of the latest residential trends. Our interior décor reflects a "modern farmhouse" style that made for those in search of a bright, welcoming environment. We have refined every detail from our stunning sliding barn doors and crafted color palette, to vaulted ceilings and Real Touch 3D high-definition wall coverings that offer natural texture and movement. We want Outback's design to make you feel as though you could switch on the TV, cozy up to the large fireplace, and feel right at home.







## MODERN FARMHOUSE

Designer-inspired décor with contemporary wood grain finishes.



## ALL OF THE LUXURIES OF HOME

Inviting living space with upgraded furniture and large panoramic windows.



# blade

HIGH-PERFORMANCE AIR FLOW SYSTEM



## BLADE™ HIGH PERFORMANCE AIR HANDLING SYSTEMS

Engineered to maximize the output from today's high-performance RV air conditioners, Keystone's NEW patented air handling system delivers an average of 20% more cooling power and is built to withstand the rigors of the road. The Blade™ system is designed to accelerate air flow, eliminate leakage and failure points, deliver 360° circulation in the cabin, and withstand environmental and road stressors that lead to reduced performance.

## ELEMENTS™ CLIMATE CONTROL PACKAGE

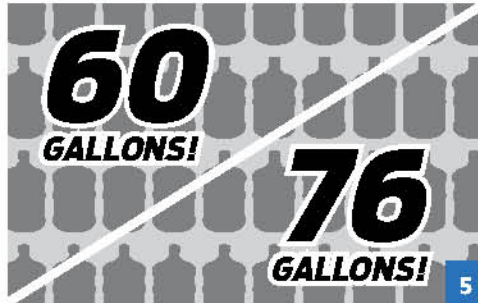
- Astro-foiled fully heated and enclosed underbelly
- Coleman-Mach® "the quiet series" air conditioner
- Race track dual-ducted A/C system.
- Vented attic space





# MODERN AMENITIES

From the beginning to the finishing touches, Outback brings a more luxurious approach to camping.



**1. BAL NXG FRAME**

Industry leading 9" / 10.5" Z-channel BAL Norco frame powder coated plus e-coated.

**2. UPDATED REAR WALL**

Laminated rear wall w/ladder plus walkable roof for easy maintenance.

**3. OPTIONAL NORCO 7.3 BAL LEVELING**

Easy setup on Premium Outbacks with push of a button. Automatic and unassisted.

**4. UPDATED APPLIANCES**

GE 12 volt 10 cu. ft. refrigerator w/Zamp solar prep (optional 8 cu. ft. gas/electric).

**5. INDUSTRY LEADING TANK CAPACITIES**

Includes 60 gal fresh plus 76 gal gray.

**6. AUTOMOTIVE GRADE FRONT CAPS**

KeyGuard chip and rock protection with upgraded gold graphics package..

**7. 48" FIREPLACE**

Sit back, relax indoors with the largest fireplace and windows in the industry.

**8. ELECTRIC STABILIZER JACKS (ULTRA-LITES)**

All units now come standard with electric stabilizer jacks.

**9. PET FRIENDLY KENNEL**

Easily accessible kennel doubles as a spacious under bed storage space.



more product detail at  
[www.keystonerv.com/Outback](http://www.keystonerv.com/Outback)

## OUTBACK PREMIUM

## TOP FEATURES

- Durable automotive-grade painted front caps
- Drop-frame design on 300ML, 335CG and 340BH models with 25% more pass-through storage
- All baggage storage doors with metal slam latches
- Pull-out storage racks on 328RL, 330RL, 332ML and 341RD models
- Ultra-stable and secure LCI SolidStep® steps on main entries
- Extended living space with adjustable awnings on all models and a second awning on 328RL and 300ML models
- Convenient, integrated command center for power tongue jack and stabilizer jacks with optional auto-leveling upgrade
- All-new refined décor featuring modern finishes, forged-iron pendant lights above islands, solid surface countertops, tile backsplash and feature walls
- KeyTV™ Keystone's revolutionary single-source, easy-to-use controller for over-the-air, cable and satellite television
- 50" TV (55" TV in 341RD)
- Stunning 48" fireplaces (36" in 335CG)
- Extra counter space with Furrion® flush-mounted glass cooktop and 21" oven
- Galley slide rooms redesigned with easy-to-clean flooring
- Dual ducted A/C system
- 30" x 40" bedroom picture window
- 60" x 80" mattresses (300ML, 335CG, and 340BH models)
- Pet kennels built into all bed bases
- Digital thermostat
- Arched rafters for extra head room



**KEYSHIELD™**  
Automotive grade front cap w/ rock protection.



**NEW SOFA STYLE**  
Updated modern design.

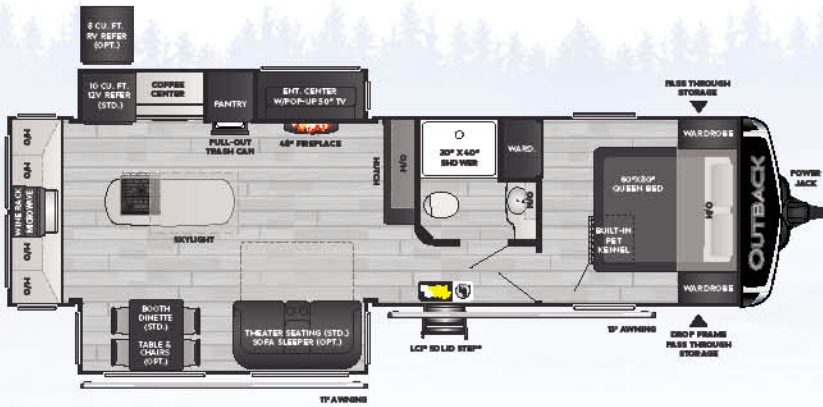


**KING BED SUITE WITH WASHER/ DRYER PREP**  
Large king size mattress with overhead storage (328RL, 330RL, 332ML and 341RD).

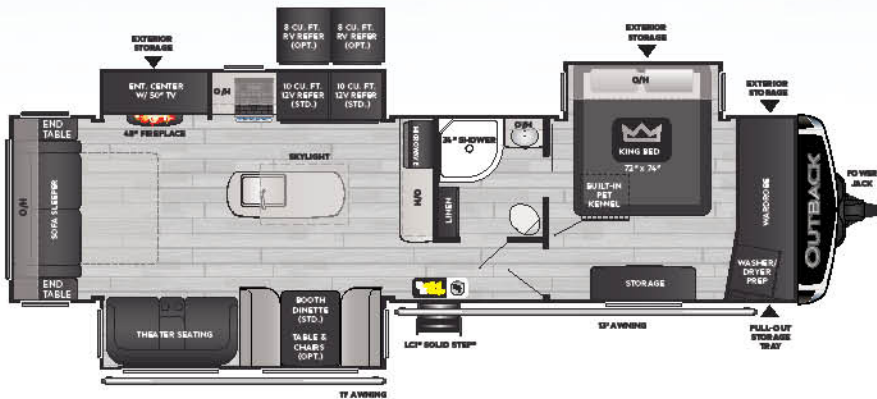


**PENDANT LIGHTING**  
Farmhouse pendant lighting adds a touch of designer inspired flare to your home-away from home.

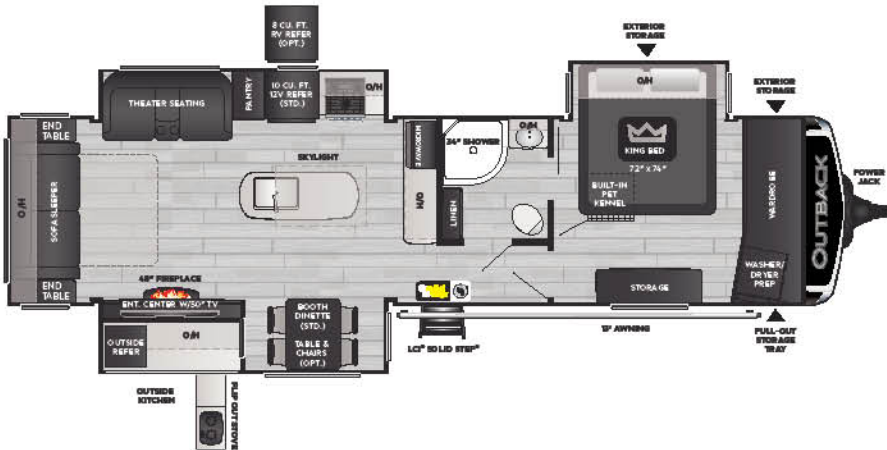




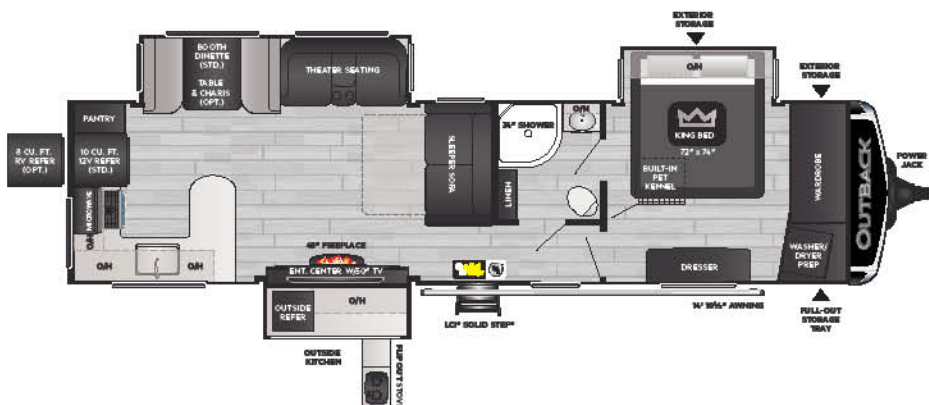
**300ML** | Mid-living room, two slides, kitchen island



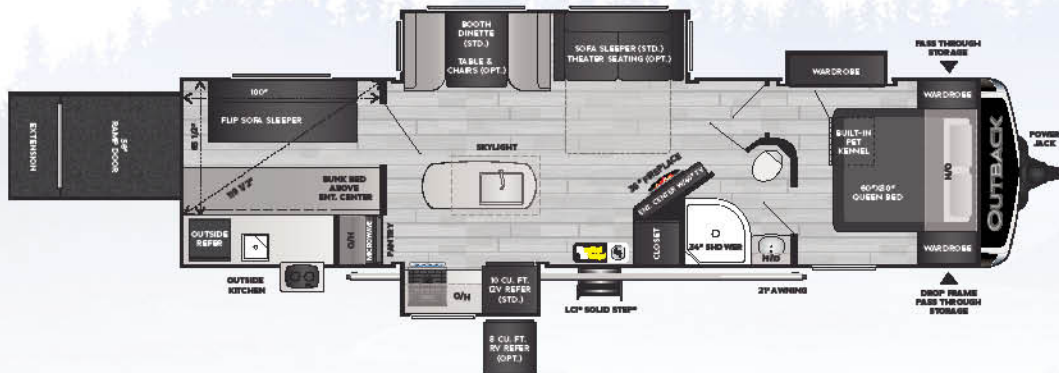
**328RL** | Rear living, three slides, double refrigerator



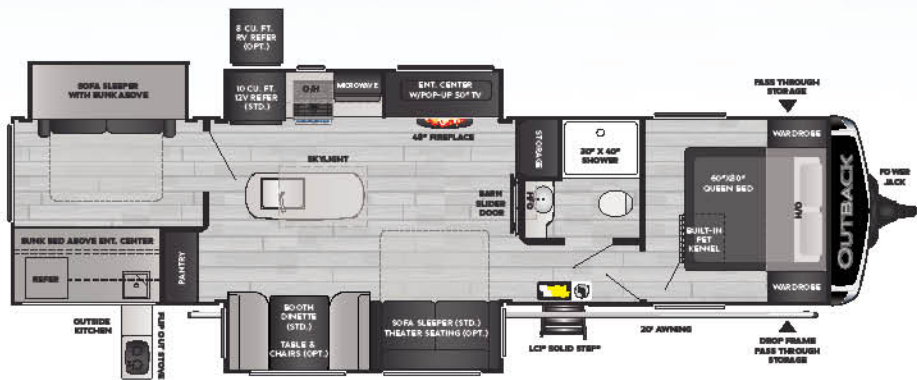
**330RL** | Rear living, three slides, outside kitchen



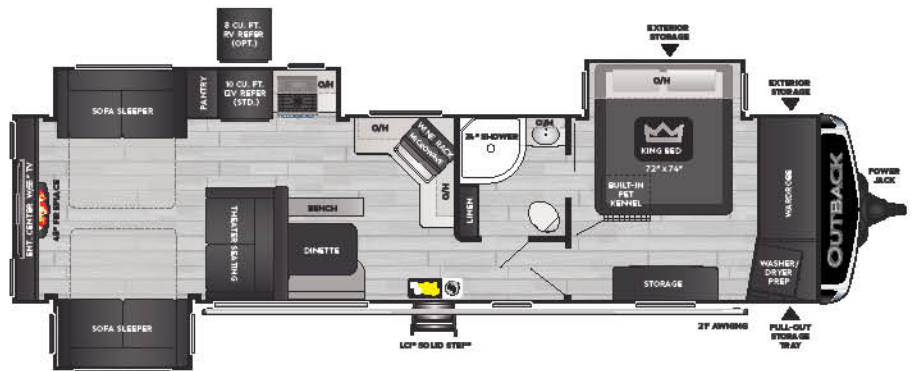
**NEW!**  
**332ML** | Mid-living, three slides, outside kitchen



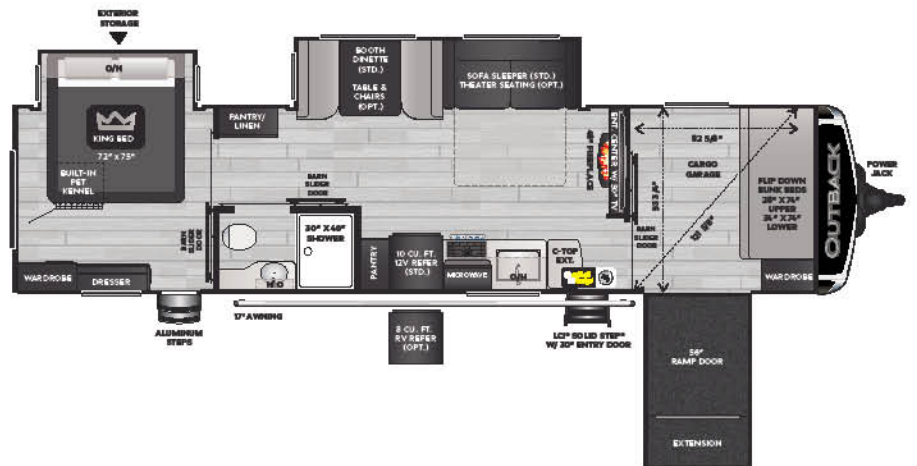
**335CG** | Cargo garage, two slides, outside kitchen



**340BH** | Bunkhouse, three slides, outside kitchen



**341RD** | Rear den entertainment, three slides, 55" TV



**NEW!**  
**342CG** | Cargo garage, two slides, wheelchair accessible



# OUTBACK ULTRA-LITE | TOP FEATURES

- Durable automotive grade painted front caps
- Ultra-stable and secure LCI SolidStep® steps on main entries (N/A 210URS, 240URS)
- Outdoor living space with adjustable awnings
- Backup camera prep
- Friction-hinge entry doors
- 33% larger, 30-pound propane tanks on all models
- 28% larger, 60-gallon fresh water tanks on all models
- All-new designer-inspired décor featuring contemporary finishes, modern backsplash
- KeyTV™ Keystone's revolutionary single-source, easy-to-use controller for over-the-air, cable and satellite television
- Extra counter space with Furrion's® flush-mounted glass cooktop and low-profile hood vent
- LED accent lighting in dinette
- Pull-out trash bins (221UMD, 244UBH, and 292URL models)
- Dual ducted A/C system
- Porcelain toilets
- Pet kennels built into bed bases (N/A 210URS, 240URS)
- Laundry chutes (N/A 210URS, 240URS)
- Digital thermostats
- Arched rafters for extra head room
- Electric stabilizer jacks

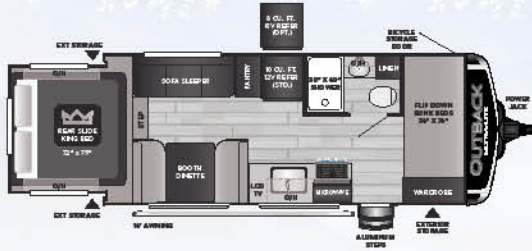


**KEYSHIELD™**  
Automotive grade front cap w/ rock protection.

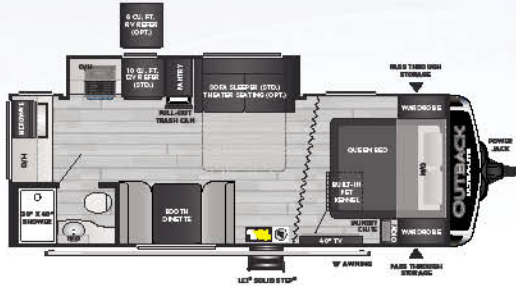
**HIDDEN PANTRY**  
All the storage and aesthetics in one innovation (291UBH, 252URS).

**30"X40" SHOWER**  
Enjoy the luxuries of home with a residential size shower.

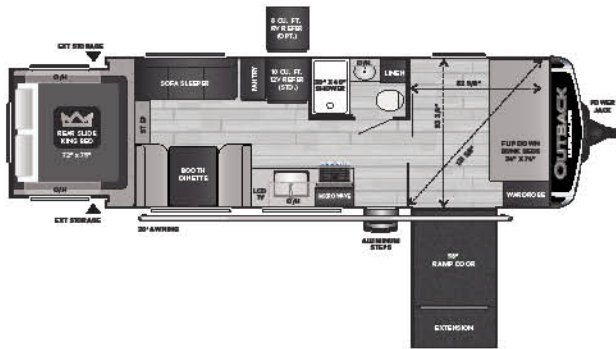
**COUNTERTOP WITH UNDERMOUNT SINK AND PULL-OUT FAUCETS**  
Residential undermount sink keeps water from getting underneath and pull-out faucet reaches all corners of the sink.



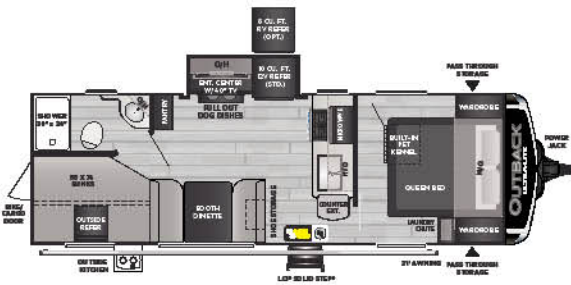
**210URS** | Rear bedroom slide, double bunks, king bed



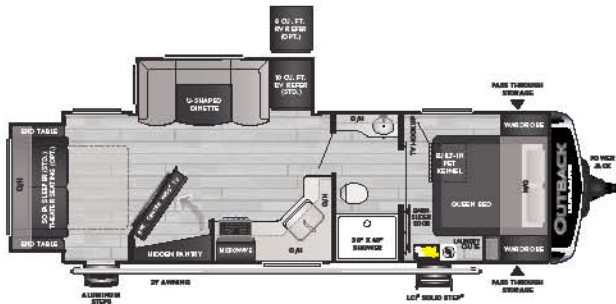
**221UMD** | Mid-dinette, rear bath, queen bed



**240URS** | Rear bedroom slide, cargo garage, king bed

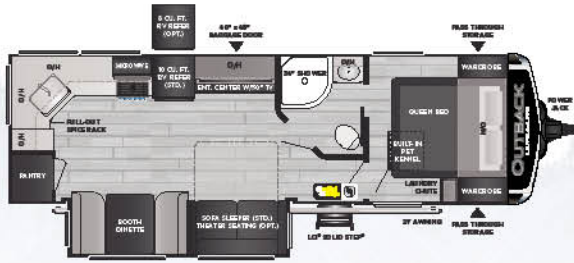


**NEW!**  
**244UBH** | Double over double bunks, rear cargo door, outside kitchen

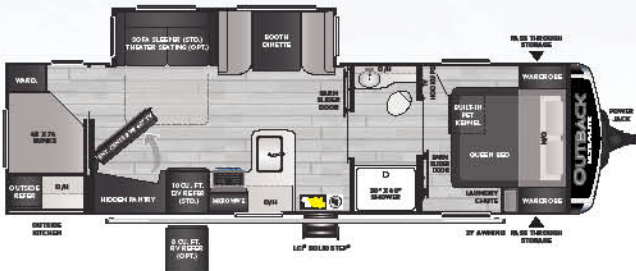


**252URS** | Rear slide, hidden pantry, extra large bathroom

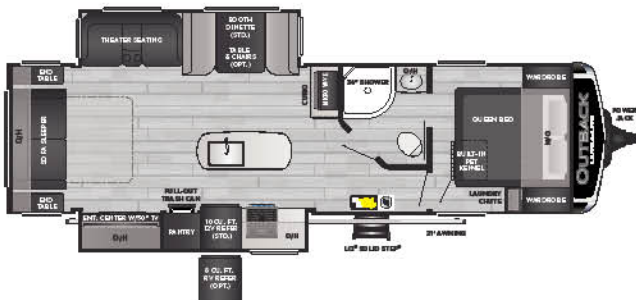




**260UML** | Mid-living room, rear kitchen, large pantry



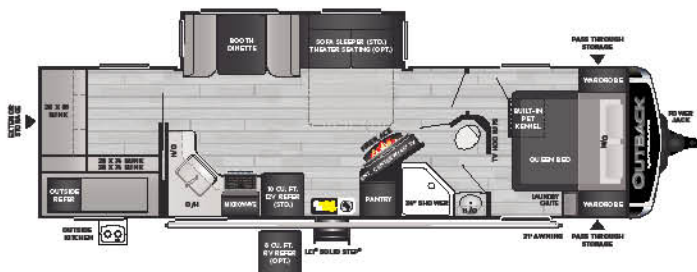
**291UBH** | Bunkhouse, hidden pantry, outside kitchen



**NEW!**  
**292URL** | Rear living, kitchen island, large pantry



**301UBH** | Rear-slide bunkhouse, 1 1/2 bath, outside kitchen



**NEW!**  
**302UBH** | Rear bunkhouse, fireplace, outside kitchen

## PREMIUM TRAVEL TRAILERS

MODEL	WEIGHT	CARRYING CAPACITY	HITCH WEIGHT	FRESH WATER	WASTE WATER	GRAY WATER	LPG	LENGTH*	WIDTH	HEIGHT	AWNING
300ML	8040	1460	1050	60	38	76	60	34' 9"	8'	11' 2"	11'/11'
328RL	8767	1733	1075	60	38	76	60	37' 7"	8'	11' 4"	11'/13'
330RL	8839	1661	1100	60	38	76	60	37' 7"	8'	11' 4"	13'
332ML	TBD	TBD	TBD	60	38	76	60	37' 10"	8'	11' 4"	21'
335CG	8228	2272	1155	60	38	76	60	37'	8'	11' 4"	21'
340BH	8787	1713	1040	60	38	76	60	38' 6"	8'	11' 4"	20'
341RD	8425	2075	1045	60	38	76	60	38' 1"	8'	11' 4"	21'
342CG	8030	2470	960	60	38	76	60	38' 0"	8'	11' 4"	21'

## ULTRA-LITE TRAVEL TRAILERS

MODEL	WEIGHT	CARRYING CAPACITY	HITCH WEIGHT	FRESH WATER	WASTE WATER	GRAY WATER	LPG	LENGTH*	WIDTH	HEIGHT	AWNING
210URS	4670	1830	485	60	30	30	60	23' 0"	8'	11' 1"	14'
221UMD	4971	2229	600	60	30	30	60	27' 0"	8'	11' 1"	19'
240URS	5189	2401	590	60	30	30	60	28' 3"	8'	11' 1"	20'
244UBH	5650	2020	670	60	30	60	60	28' 11"	8'	11' 1"	21'
252URS	6245	1495	745	60	30	60	60	29' 7"	8'	11' 1"	21'
260UML	5912	1688	600	60	30	60	60	30' 6"	8'	11' 1"	21'
291UBH	6601	1599	655	60	30	60	60	33' 8"	8'	11' 1"	21'
292URL	7115	2385	730	60	30	60	60	33' 11"	8'	11' 1"	21'
301UBH	7134	2366	900	60	60	60	60	34' 9"	8'	11' 2"	20'
302UBH	7010	2490	930	60	30	60	60	34' 10"	8'	11' 2"	21'

DISCLAIMER: Product information is as accurate as possible as of the date of publication of this brochure. All features, floor plans, and specifications in this brochure are subject to change without notice. Please also consult Keystone's web site at [www.keystonerv.com](http://www.keystonerv.com) for more current product information and specifications. Tow Vehicle Disclaimer: CAUTION: Owners of Keystone recreational vehicles are solely responsible for the selection and proper use of tow vehicles. All customers should consult with a motor vehicle manufacturer or their dealer concerning the purchase and use of suitable tow vehicles for Keystone products. Keystone disclaims any liability or damages suffered as a result of the selection, operation, use or misuse of a tow vehicle. KEYSTONE'S LIMITED WARRANTY DOES NOT COVER DAMAGE TO THE RECREATIONAL VEHICLE OR THE TOW VEHICLE AS A RESULT OF THE SELECTION, OPERATION, USE OR MISUSE OF THE TOW VEHICLE. \*Length is defined as the distance from the centerline of hitch pin/coupler to rear bumper of trailer. Please review owner's manual prior to purchase for more information on service warranties, extended use, towing and maintenance. Owner's manuals can be found at [keystonerv.com](http://keystonerv.com).

## PREMIUM OUTBACK TRAVEL TRAILERS

### COMFORT PACKAGE (MANDATORY)

50 AMP service/wire and framed for 2nd A/C, 15K BTU ducted air conditioner, 35K BTU high capacity furnace, detachable power cord, backup camera prep, solar prep, quick recovery water heater, hand glazed ash cabinetry, solid surface countertops, AM/FM/CD/DVD player (Bluetooth enabled), luxury appliances, 48" fireplace (36" on 335CG), 10 cu. ft. 12V refrigerator (two 10 cu. ft. refrigerators in 328RL only), 21" flush mount stove, high-rise faucet w/pull-out sprayer, trash can, utensil rack, coat hooks (most models), tri-fold sofa, MCD roller shades, LED puck lights, MaxStor dinette w/LED directional lighting (N/A 330RL), carbon monoxide detector, residential innerspring mattress with bedspread

### PREMIUM PACKAGE (MANDATORY)

Polar White high gloss exterior fiberglass, full fiberglass front cap w/rock guard, slam pass-thru baggage doors, LP cover, LCI SolidStep® steps, black tank flush, radial tires w/15" spare, aluminum wheels, LED lit power awning, XL entry handle, omni directional antenna, exterior convenience utility center, heated and enclosed underbelly w/designated heat duct to subfloor, moisture barrier floor enclosure, hi-density roof insulation w/attic vent, walk-on roof

### OPTIONS

7.3 BAL leveling system, free standing dinette, theater seating (300ML, 332ML, 342CG, 335CG, 340BH), 2nd A/C, 8 cu. ft. gas/electric refrigerator

## ULTRA-LITE OUTBACK TRAVEL TRAILERS

### ULTRA-LITE EXTERIOR GROUP (MANDATORY)

PolarWhite colored fiberglass, painted front cap, laminated aluminum framed sidewalls, omni directional TV antenna, satellite prep, battery disconnect, cable TV, radial tires w/ spare, stabilizer jacks, black tank flush, easy lube axles, quick connect LP line, friction hinge entry doors, electric awning w/LED lights, heated and enclosed underbelly w/designated heat duct to subfloor, moisture barrier floor enclosure, exterior speakers, magnetic door catches, aluminum rims, 15K A/C, 6 gallon gas/electric DSI water heater, 30 lb. LP tanks w/cover

### ULTRA-LITE INTERIOR GROUP (MANDATORY)

AM/FM/CD/DVD player (Bluetooth enabled), ceiling speakers, 21" oven w/glass top, LED HD TV, skylight in bath, ducted A/C, microwave, 8 cu. ft. refrigerator, USB charging ports, tri-fold sleeper sofa (jack-knife sofa - 210UMD, 240URS), MaxStor dinette, high-rise faucet w/pull-out sprayer, pleated shades, luxury appliances, hand glazed ash cabinet doors, porcelain toilet, LED lights, laundry chute (N/A 210UMD, 240URS), 35K BTU high capacity furnace, built-in pet kennel, sink cover, digital thermostat

### ULTRA-LITE OPTIONS

Free-standing dinette (292URL), Theater seating (N/A 210, 240, 244), 2nd A/C (N/A 210, 221, 240), 8 cu. ft. gas/electric refrigerator



	TT	ULTT
<b>LIVING AREA</b>		
Upgraded furniture package	●	●
Pre-drilled and screwed hand-glazed ash cabinetry	●	●
Large panoramic windows	●	●
Vinyl flooring	●	●
40"/50" HDTV (most models)	●	●
MCD roller shades*	●	
Vaulted ceiling	●	●
USB charging port	●	●
LED lighting and (2) LED floor lights	●	●
Fireplace (ULTT select models)	●	●
<b>KITCHEN</b>		
Deep, single basin sink with 3" drains	●	●
Trash can storage*	●	●
High-rise faucet w/pull-out sprayer*	●	●
Utensil tray	●	●
3-burner range with oven and microwave*	●	●
Solid surface countertops*	●	
Pressed countertops*		●
Skylights over islands	●	
<b>BEDROOM</b>		
Deluxe innerspring mattress	●	●
TV hook-up	●	●
Jalousie windows for maximum ventilation	●	●
USB charging port	●	●
Built-in pet kennel storage	●	●
<b>BATHROOM</b>		
Power roof vent and skylight over tub	●	●
Porcelain foot-flush toilet	●	●
Tub surround*	●	●
Radius shower (N/A 300ML, 340BH, 342CG)	●	●
<b>APPLIANCES</b>		
AM/FM/CD stereo w/DVD player, MP3 hookup and Bluetooth enabled	●	●
10 cu. ft. 12V refrigerator	●	●
Range with oven and microwave (3 burner)*	●	●
6-gallon gas/electric DSI water heater w/quick-recovery capacity of 16.2 gallons per hour	●	●
15,000 BTU AC wall thermostat and 35,000 BTU furnace	●	●
<b>EXTERIOR</b>		
Painted fiberglass front cap w/LED strip lights and rock guard	●	●
Polar White fiberglass with black framed, tinted safety glass windows	●	●
Black tank flush	●	●
Assist entry grab handle	●	●
Lippert Step Above® steps	●	●

	TT	ULTT
30 lb. LP bottles	●	●
Backup camera prep	●	●
Double welded dual battery brackets with battery disconnect	●	●
Exterior speakers	●	●
Dexter® E-Z Lube® axles	●	●
Exterior quick connect LP hook-up	●	●
Power stabilizer jacks with auto-leveling option	●	
Electric stabilizer jacks (4) with power tongue jack		●
Satellite prep	●	●
Slam-latch baggage doors with magnetic door holders	●	
Rear ladder	●	●
Water docking station	●	●
Friction-hinge entry door	●	●
Welded aluminum walls	●	●
<b>ELEMENTS™ CLIMATE CONTROL PACKAGE</b>		
Astro-foiled fully heated and enclosed underbelly	●	●
Coleman-Mach® "the quiet series" air conditioner	●	●
Race track dual-ducted A/C system.	●	●
Vented attic space	●	●
<b>ROOF</b>		
5' radius, vaulted wood, tapered trusses on 16" centers	●	●
3/8" roof decking	●	●
One-piece TPO roof	●	●
Blanket insulation	●	●
<b>FLOOR</b>		
2" welded aluminum laminated floor	●	●
Wrapped vapor barrier	●	●
Polypropylene heated underbelly (encloses tanks and valves)	●	●
<b>CHASSIS</b>		
Powder coated NXG frame from BAL w/leaf spring equalizing suspension system	●	●
Dexter E-Z Lube® axles with 10" electric brakes	●	●
15" radial tires on aluminum wheels with spare*	●	
14" radial tires on aluminum wheels with spare		●
<b>UTILITIES</b>		
55-AMP converter	●	●
30 lb. LP bottles with auto changeover	●	●
4G LTE and Wi-Fi ready	●	●
50-AMP shore power line (N/A 210URS/221UMD/240URS)	●	●
Fire extinguisher, carbon monoxide detector, LP lead detector, smoke detector	●	●
Breakaway switch and safety chains	●	●
Manual slide backup on all electric slide-outs	●	●
RVIA	●	●

# BUILT FOR THE LONG HAUL



## 1 EASIER SHOPPING.

At Keystone, we make choosing an RV as easy as finding the Big Dipper on a dark summer night. With comprehensive online product information, Key Connect™ product advisors, and an unparalleled dealer network, we will help you select the perfect RV for your family's adventure.

## 2 INNOVATIVE THINKING.

The road's a nicer place when you have the industry's smartest features behind you. Keystone leads the pack in patented innovations that make our RVs safer, more comfortable, and easier to operate.

## 3 LONG HAUL QUALITY.

To keep you on the road, there are certain things we just won't build a Keystone RV without. Game-changing features like our Unified Wiring Standard, Tru-Fit™ five-point slide construction, and no-fail Tuf-Lok™ A/C duct joiners combined with exhaustive testing and inspections are some of the reasons why Keystone is able to offer our owners the industry's best 3-year limited structural warranty.

## 4 WORRY-FREE CUSTOMER SERVICE.

Wherever the road takes you, you're never too far from an authorized Keystone service center. We also offer live service assistance, ultra-fast parts shipping, online maintenance tips and tricks, and a single-point warranty claims policy. *That's* peace of mind.

## 5 KEYSTONE NATION.

When you choose Keystone, you become a part of one of the largest camping families in the country. We're Keystone Nation. A friendly community where people share photos, travel tips and amazing stories — all in the spirit of camaraderie and adventure. Come join us.