



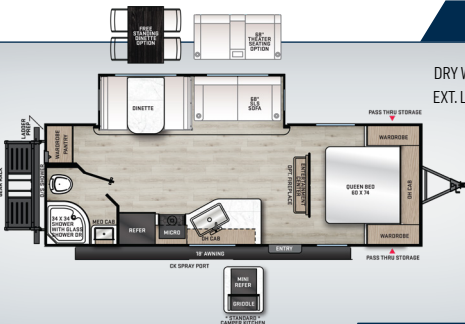
2024 PRODUCT OFFERING

# CATALINA



SUMMIT SERIES 7 · SUMMIT SERIES 8 · EXPEDITION · LEGACY EDITION · TRAIL BLAZER · DESTINATION SERIES

**LEGACY EDITION**



**243 RBS**

DRY WEIGHT: **5,528**  
EXT. LENGTH: **28' 9"**



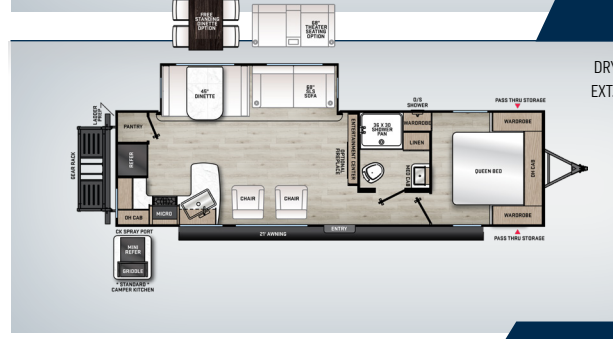
**263 BHSCK**

DRY WEIGHT: **6,472**  
EXT. LENGTH: **32' 9"**



**263 FKDS**

DRY WEIGHT: **6,810**  
EXT. LENGTH: **29' 11 7/8"**



**283 RKS**

DRY WEIGHT: **6,576**  
EXT. LENGTH: **33' 8"**

**NEW**

**283 FEDS**

DRY WEIGHT: **8,004**  
EXT. LENGTH: **35' 11 7/8"**



**293 QBCK**

DRY WEIGHT: **6,824**  
EXT. LENGTH: **34' 2"**



**NEW**

**293 TQBCK**

DRY WEIGHT: **7,462**  
EXT. LENGTH: **36' 0"**



**303 RKDS**

DRY WEIGHT: **7,982**  
EXT. LENGTH: **36' 11"**



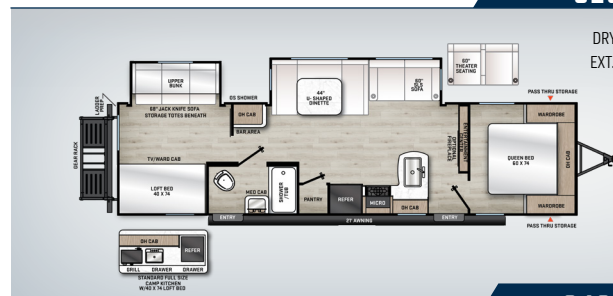
**313 RLTS**

DRY WEIGHT: **8,316**  
EXT. LENGTH: **36' 5"**



**323 BHDSCK**

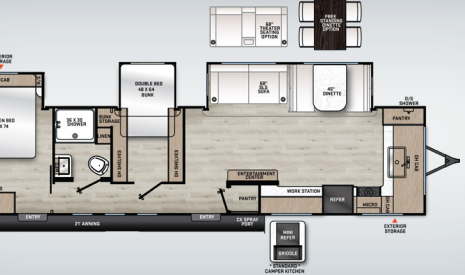
DRY WEIGHT: **7,804**  
EXT. LENGTH: **36' 8"**



**NEW**

**333 FKTS**

DRY WEIGHT: **TBD**  
EXT. LENGTH: **TBD**



**343 BHTS(2Q)**

DRY WEIGHT: **8,438**  
EXT. LENGTH: **38' 6"**



# LEGACY EDITION

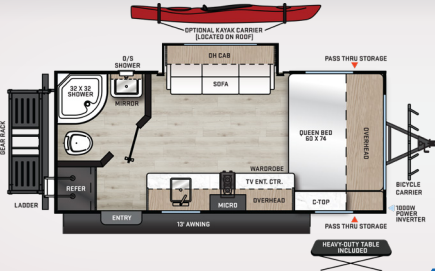
**343 BHTS**

DRY WEIGHT: **8,618**  
EXT. LENGTH: **38' 6"**



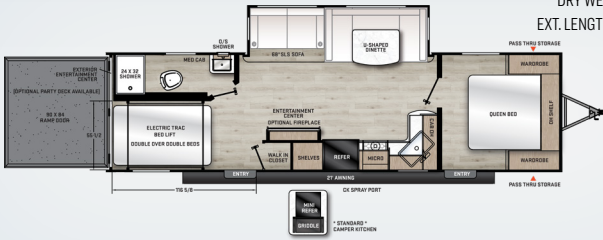
**192 FQS**

DRY WEIGHT: **4,092** EXT. LENGTH: **21' 8"**



**27 THS**

DRY WEIGHT: **7,412**  
EXT. LENGTH: **33' 10"**



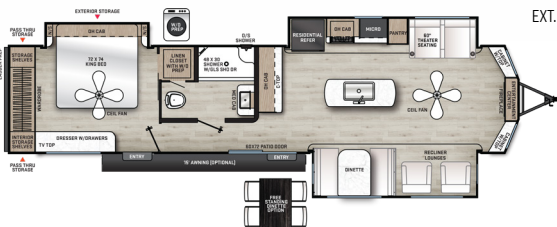
**29 THS**

DRY WEIGHT: **7,022**  
EXT. LENGTH: **35' 8"**



**39 MKTS**

DRY WEIGHT: **9,480**  
EXT. LENGTH: **40' 11"**



**40 BHTS**

DRY WEIGHT: **9,610**  
EXT. LENGTH: **40' 11"**

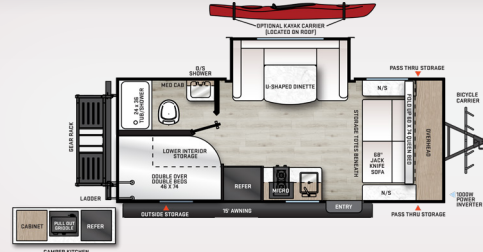


# EXPEDITION

**NEW**

**192 BHS**

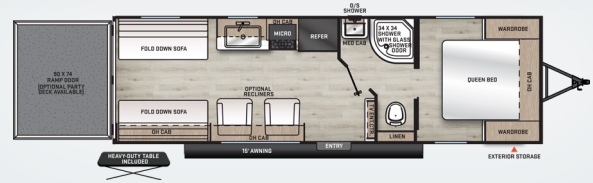
DRY WEIGHT: **4,536**  
EXT. LENGTH: **23' 6"**



# TRAILBLAZER

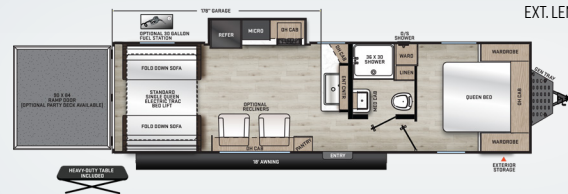
**26 TH**

DRY WEIGHT: **5,427**  
EXT. LENGTH: **30' 0"**



**28 THS**

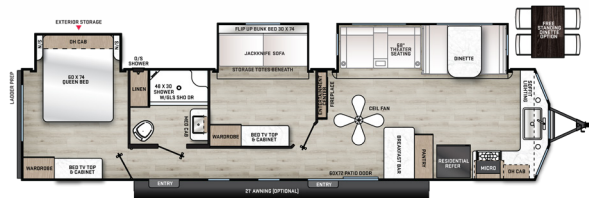
DRY WEIGHT: **7,166**  
EXT. LENGTH: **33' 10"**



# DESTINATION

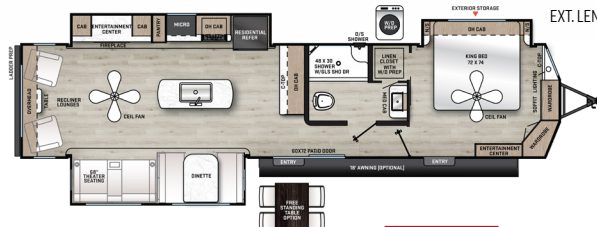
**39 FKTS**

DRY WEIGHT: **9,350**  
EXT. LENGTH: **40' 11"**



**39 RLTS**

DRY WEIGHT: **9,702**  
EXT. LENGTH: **40' 11"**



**NEW**

**40 BHTS(2Q)**

DRY WEIGHT: **TBD**  
EXT. LENGTH: **TBD**



**SUMMIT 7** **NEW** **154 RBX**

DRY WEIGHT: **3,009**  
EXT. LENGTH: **19' 6"**



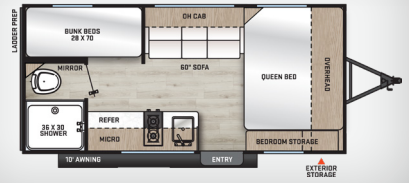
**NEW** **154 RDX**

DRY WEIGHT: **TBD**  
EXT. LENGTH: **19' 6"**



**164BHx**

DRY WEIGHT: **2,950**  
EXT. LENGTH: **19' 6"**



**184 BHS**

DRY WEIGHT: **4,162**  
EXT. LENGTH: **23' 1"**



**NEW** **184 RBS**

DRY WEIGHT: **TBD**  
EXT. LENGTH: **TBD**



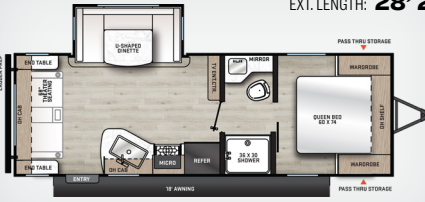
**SUMMIT 8** **NEW** **221 MKE**

DRY WEIGHT: **5341**  
EXT. LENGTH: **25' 11"**



**231 MKS**

DRY WEIGHT: **5,042**  
EXT. LENGTH: **28' 2"**



**261 BH**

DRY WEIGHT: **4,763**  
EXT. LENGTH: **29' 11"**



**261 BHS**

DRY WEIGHT: **5,482**  
EXT. LENGTH: **30' 5"**



**271 DBS**

DRY WEIGHT: **6,240**  
EXT. LENGTH: **33' 2"**



**NOTES:**

---



---



---



---



---



---



---



---



Coachmen Industries  
423 N. Main St.,  
Middlebury, IN 46540  
Phone: 574-825-5821

**YOUR CATALINA DEALER**

All information contained in this brochure is believed to be accurate at the time of publication. However, during the model year, it may be necessary to make revisions and Forest River, Inc., reserves the right to make all such changes without notice, including prices, colors, materials, equipment and specifications as well as the addition of new models and the discontinuance of models shown in this brochure. Therefore, please consult with your Forest River, Inc., dealer and confirm the existence of any materials, design or specifications that are material to your purchase decision. To learn more about Coachmen RV and our products and see how Coachmen is leading the great outdoors, visit [www.coachmenrv.com](http://www.coachmenrv.com)